



**JUNE 2018**

This report analyses the performance of single-unit rental properties in the second-hand prime central and prime outer London markets between £250 and £5,000+/ week. For an analysis of the build-to-rent market and the institutional private rented sector in London and the rest of the UK, please see our Private Rented Sector Update <http://www.knightfrank.co.uk/research>

**PRIME CENTRAL LONDON**

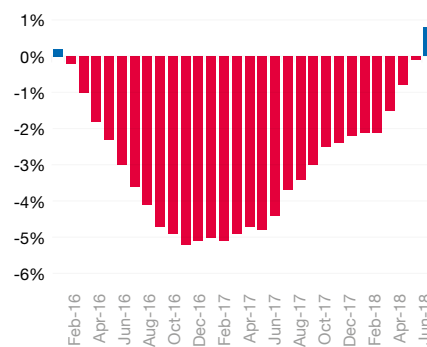
Prime central London index | **165.2**

Annual rental value change | **0.8%**

Quarterly rental value change | **1.7%**

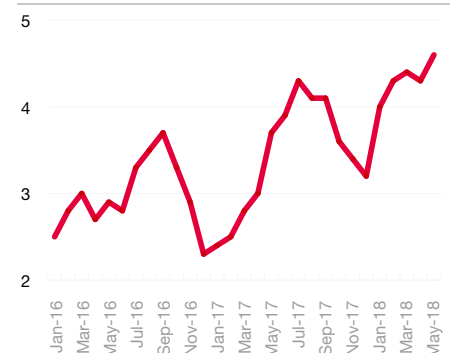
**Figure 1** Annual rental value growth has turned positive in prime central London for the first time since January 2016. Rental values have strengthened as supply levels have fallen, which has happened as more landlords have listed their properties for sale following recent tax changes in the lettings sector and as sales pricing appears to bottom out.

**FIGURE 1**  
**Annual rental value growth positive once again**  
 Annual rental value growth in prime central London



Source: Knight Frank Research

**FIGURE 2**  
**Tenant demand strengthens relative to supply**  
 Ratio of new prospective tenants to new listings, three-month rolling average



Source: Knight Frank Research

**PRIME OUTER LONDON**

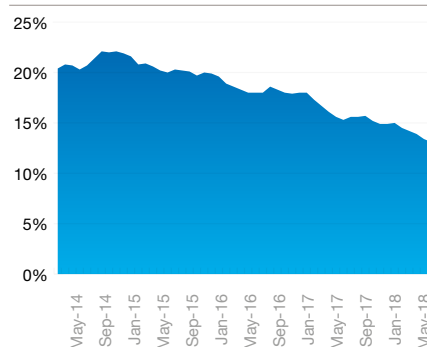
Prime outer London index | **172.0**

Annual rental value change | **-2.09%**

Quarterly rental value change | **1.27%**

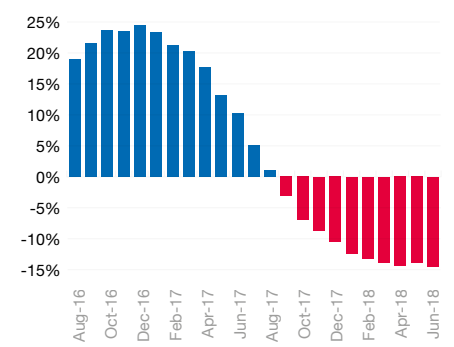
**Figure 3** The proportion of landlords who are registering as new prospective buyers has fallen over the last four years in prime central and outer London. Following a series of recent tax changes, they accounted for 13% of new prospective buyers in May 2018 compared to 20% in May 2014.

**FIGURE 3**  
**The number of landlord buyers declines**  
 Landlords as % of new prospective buyers in prime London



Source: Knight Frank Research

**FIGURE 4**  
**Rental listings fall in prime outer London**  
 Number of £500+/week listings, annualised % change



Source: Knight Frank Research / Rightmove

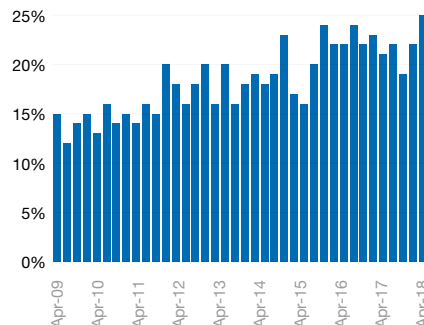
**Figure 4** The number of properties listed for rent in prime outer London in the year to May 2018 was 14% lower than the previous 12-month period. More property owners are trying to sell their property following tax changes that have affected landlords, which is putting upwards pressure on rental values.

ECONOMIC DATA

**Figure 5** A quarter of respondents to a Bank of England survey said they had “no idea” as to the likely direction of interest rates over the following 12 months, the highest figure since the survey began in 1999. Mixed economic data had increased uncertainty but most economists expect a rise this year.

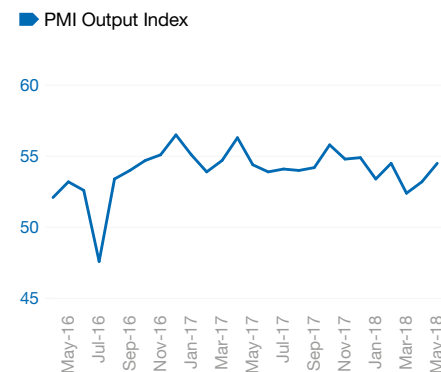
**Figure 6** Although the flow of economic data has been mixed since the start of the year, the composite Purchasing Managers Index showed economic activity picking up in May. The index rose to 54.5 from 53.2 in April, with a figure over 50 suggesting growth.

**FIGURE 5**  
**People puzzle over interest rates**  
Record number of people unsure over rate direction



Source: Knight Frank Research

**FIGURE 6**  
**Business sentiment picks up in May**



Source: Knight Frank Research

**FIGURE 7**  
**PRIME CENTRAL LONDON Price growth by price band, time period and property type**

	£250 - £500 pw	£500 - £750 pw	£750 - £1,000 pw	£1,000 - £1,500 pw	£1,500 - £2,000 pw	£2,000 + pw	Flat	House
<b>1 month</b>	1.2%	0.3%	0.6%	0.6%	0.4%	1.1%	0.8%	0.6%
<b>3 months</b>	2.4%	1.4%	1.4%	1.6%	1.2%	2.2%	1.8%	1.4%
<b>6 months</b>	2.8%	1.0%	1.0%	1.0%	2.1%	2.0%	1.8%	1.1%
<b>1 year</b>	1.9%	0.8%	1.2%	-1.2%	0.6%	1.4%	1.0%	0.4%
<b>YTD</b>	2.8%	1.0%	1.0%	1.0%	2.1%	2.0%	1.8%	1.1%

**FIGURE 8**  
**PRIME OUTER LONDON Price growth by price band, time period and property type**

	£250 - £500 pw	£500 - £750 pw	£750 - £1,000 pw	£1,000 - £1,500 pw	£1,500 - £2,000 pw	£2,000 + pw	Flat	House
<b>1 month</b>	0.1%	0.3%	0.3%	0.4%	0.5%	1.0%	0.2%	0.5%
<b>3 months</b>	0.4%	0.8%	0.9%	2.5%	1.6%	2.6%	0.9%	1.8%
<b>6 months</b>	0.6%	0.8%	0.1%	0.9%	0.8%	-0.5%	0.9%	0.1%
<b>1 year</b>	-0.5%	-1.1%	-2.8%	-5.3%	-2.0%	-2.8%	-0.8%	-3.7%
<b>YTD</b>	0.6%	0.8%	0.1%	0.9%	0.8%	-0.5%	0.9%	0.1%

DATA DIGEST

The Knight Frank Prime Central London Index, established in 1995, is the most comprehensive index covering the prime central London residential marketplace. The index is based on a repeat valuation methodology that tracks the rental values of prime central London residential property.

Prime central London is defined in the index as covering: Aldgate & the City, Belgravia, Chelsea, Hyde Park, Islington, Kensington, Knightsbridge, Marylebone, Mayfair, Notting Hill, Riverside, South Kensington, St John’s Wood, Tower Bridge and Victoria.

Prime Outer London comprises Barnes, Battersea, Belsize Park, Canary Wharf, Chiswick, Clapham, Dulwich, Fulham, Hampstead, Queen’s Park, Richmond, Wandsworth, Wapping and Wimbledon.

RESIDENTIAL RESEARCH



**Tom Bill**  
Head of London  
Residential Research  
+44 20 7861 1492  
tom.bill@knightfrank.com

RESIDENTIAL LETTINGS



**Tim Hyatt**  
Head of Lettings  
+44 20 7861 5044  
tim.hyatt@knightfrank.com

PRESS OFFICE

**Harry Turner**  
+44 20 3861 6974  
harry.turner@knightfrank.com



**Important Notice**  
© Knight Frank LLP 2018 - This report is published for general information only and not to be relied upon in any way. Although high standards have been used in the preparation of the information, analysis, views and projections presented in this report, no responsibility or liability whatsoever can be accepted by Knight Frank LLP for any loss or damage resultant from any use of, reliance on or reference to the contents of this document. As a general report, this material does not necessarily represent the view of Knight Frank LLP in relation to particular properties or projects. Reproduction of this report in whole or in part is not allowed without prior written approval of Knight Frank LLP to the form and content within which it appears. Knight Frank LLP is a limited liability partnership registered in England with registered number OC305934. Our registered office is 55 Baker Street, London, W1U 8AN, where you may look at a list of members’ names.