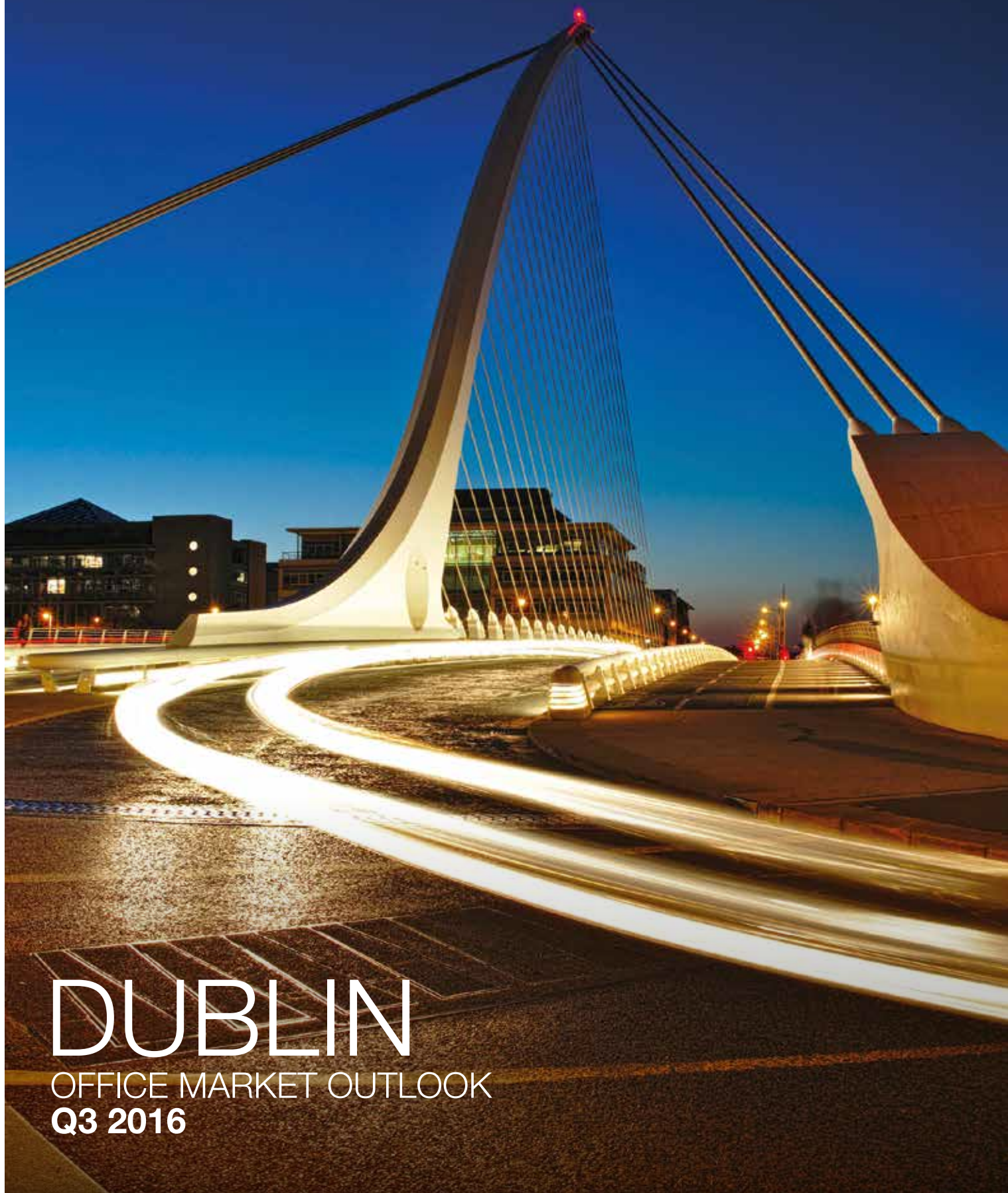


RESEARCH



DUBLIN

OFFICE MARKET OUTLOOK
Q3 2016

OCCUPIER TRENDS

INVESTMENT TRENDS

MARKET OUTLOOK

KEY FINDINGS

The digital economy in Ireland has expanded by approximately 40% since 2012. It represents 6% (€12.3 billion) of Ireland's GDP and is expected to expand to about €21.4 billion or 7.9% by 2020.

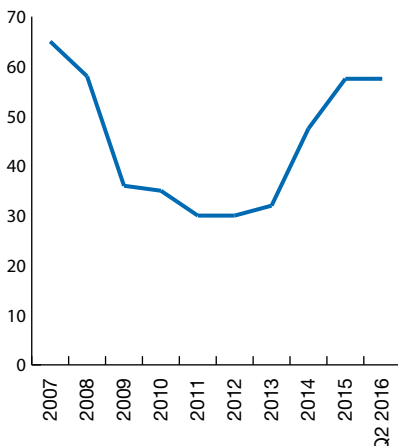
Dublin has been the driver of economic growth in Ireland – an additional 64,600 new jobs were created over the past three years; one-fifth in digital industries.

In view of strong economic and employment indicators, the occupier market has been dynamic, with TMT dominating, accounting for 43% of take-up.

Supply shortages have resulted in significant rental increases; however these have now moderated due to a sizeable development pipeline.

There is continued appetite for real estate with demand coming from a broad spectrum of investor types, with US institutions key investors.

FIGURE 1
Prime office rents
€ per sq ft per annum



Source: Knight Frank Research

OCCUPIER MARKET

Approximately 27,000 jobs were created in Dublin over the last year, with around half of these in office-based employment.

Dublin's digital sector has grown considerably in recent times. Digital employment has risen by 9.3% over the last 12 months (4,000 jobs), generating increased demand for office space. This trend has been reflected in office take-up volumes, which reached 2.7 million sq ft over the past year. The TMT sector has dominated occupier activity, accounting for around 43% of lettings.

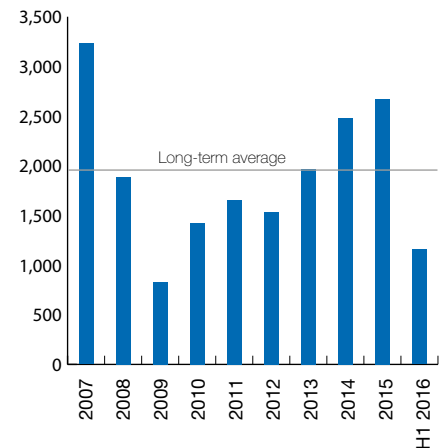
Some of the biggest global technology firms have moved to Dublin, reaffirming the city's reputation as the location for young innovative companies. At present, 300 multinational firms have their regional headquarters in the country. The technology industry directly employs an estimated 60,000 people; the majority based in Dublin. The digital sector is burgeoning, with Amazon, HubSpot, Search Optics and Datalex just a few of the companies that have recently announced plans to expand.

Following a period of muted activity, office construction is booming. There is over 3.0 million sq ft of new office development under construction, with one-third of space already pre-committed. Despite significant activity, supply shortages are likely to persist for some time due to the lag between construction and completion. While rents have maintained stability this quarter,

at €57.50 per square foot, rents are anticipated to rise to reach their 2007 peak of €65 per square foot by early 2018.

Occupiers will continue to be hampered in choice as availability of space is at a historical low (8.2%). Long leases are due to expire in many obsolete buildings and their withdrawal from the market for redevelopment will result in further market pressures.

FIGURE 2
Office take-up
sq ft (000s)



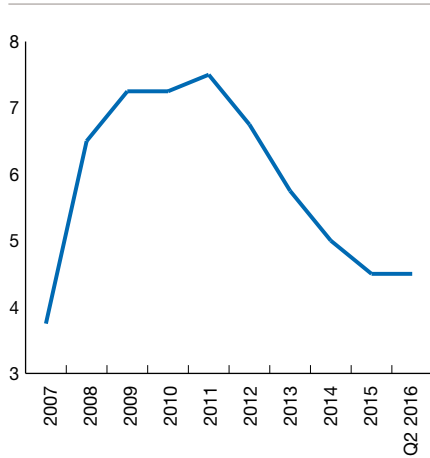
Source: Knight Frank Research

Key office leasing transactions in 2016

| Quarter | Property | Tenant | Sector | Size (sq ft) |
|---------|----------------------------------|------------------------|---------|--------------|
| Q1 | Two Gateway, Dublin 3 | ESB | State | 77,780 |
| Q1 | George's Quay, Dublin 2 | Fidelity International | Finance | 68,000 |
| Q1 | Block J& K, Eastpoint, Dublin 3 | Arvato | TMT | 63,000 |
| Q1 | Colvill House, Dublin 1 | Irish Water | State | 55,000 |
| Q1 | Three Gateway, Block C, Dublin 3 | ESB | State | 42,390 |
| Q2 | Block C, Spencer Dock, Dublin 1 | United Health Group | Medical | 43,625 |
| Q2 | One Gateway, Dublin 3 | Whirlpool | TMT | 24,381 |

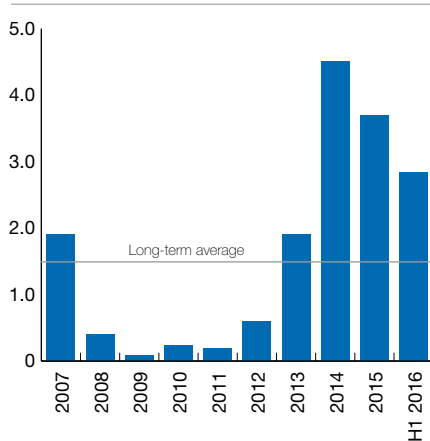
Source: Knight Frank Research

FIGURE 3
Prime office yields
%



Source: Knight Frank Research

FIGURE 4
Ireland commercial property
investment volumes
€ billion



Source: Knight Frank Research

INVESTMENT MARKET

The Irish investment market enjoyed another positive start to the year, with a total investment volume of €2.84 billion transacting in H1 2016. Several key themes played out – increases in the level of re-investing by international funds, capital shifting to cities outside of Dublin, and a continuation in demand for portfolios. Although Brexit has caused a significant undercurrent of caution, the signals point to sustained appetite for real estate, with sentiment remaining positive.

While offices continue to command the highest share of investment activity, one of the largest deals on record to complete in Q2 involved Blackstone’s purchase of the Blanchardstown Centre for a reported €950 million. The deal is expected to

close pending regulatory approval and is a sign of positive economic sentiment.

Dublin is appealing to a broader market and has attracted plenty of capital. Irish real estate is still attractive for investors. Current office yields of 4.5% outperform other asset classes such as Irish bonds and equities. While returns have moderated over the course of 2016, rental growth has primarily been driving performance.

Conditions look set for a continuation of cross-border investment into Ireland; however, the profile of international capital is expected to continue to evolve. While US investors are expected to dominate, Dublin is likely to see increased capital flow from European investors.

Key office investment transactions in 2016

| Quarter | Property | Seller | Buyer | Approximate price (€million) |
|---------|---|---------------|--------------------|------------------------------|
| Q2 | One Spencer Dock, Dublin 1 | EY | International Fund | 240 |
| Q1 | The Oval, Dublin 4 | Confidential | Patrizia | 145 |
| Q2 | Project Kells, Dublin 2 | Aviva | Meyer Bergman/ BCP | 93 |
| Q2 | LXV, AerCap House, St Stephen’s Green, Dublin 2 | Private Irish | CNP Assurance | 85 |
| Q2 | Block B, Allianz Building, Dublin 4 | Starwood | Irish Life | 57 |
| Q2 | Office Part of the Liffey Collection | NAMA | Avestus & Ares | 54 |

Source: Knight Frank Research



One Spencer Dock, purchased by International Fund

KNIGHT FRANK VIEW

Due to its strong economic and cultural ties to the UK, Ireland may be impacted by Brexit, but benefit from the fallout too.

Financial firms that are located in the UK can operate in the EU via a mechanism called “passporting”. The UK will have to renegotiate these terms and these may not be as favourable as those currently in place. Money-transfer and payments start-ups would be hardest hit by the end of EU passporting, but as the real impacts on

the fintech industry are still uncertain, there is a wait to see whether Dublin, the only other fully English-speaking capital city in the EU, can be the next European city in line. Overall however, the fundamentals underpinning the Irish investment market are set to remain strong, with the economic backdrop positive, occupier markets buoyant and financial conditions continuing to improve.



EUROPEAN RESEARCH

Matthew Colbourne, Associate
International Research
+44 20 7629 8171
matthew.colbourne@knightfrank.com

Vivienne Bolla, Senior Analyst
International Research
+44 20 7629 8171
vivienne.bolla@knightfrank.com

DUBLIN

Declan O'Reilly, Director
+353 1 634 2466
declan.oreilly@ie.knightfrank.com

Paul Hanly, Director
+353 1 634 2466
paul.hanly@ie.knightfrank.com

Jim O'Reilly, Director
+353 1 634 2466
jim.oreilly@ie.knightfrank.com

John Ring, Investment Analyst
+353 1 634 2466
john.ring@ie.knightfrank.com

Gavin Maguire,
Head of Tenant Representation
+353 1 634 2466
gavin.maguire@ie.knightfrank.com



Important Notice

© **Knight Frank LLP 2016** – This report is published for general information only and not to be relied upon in any way. Although high standards have been used in the preparation of the information, analysis, views and projections presented in this report, no responsibility or liability whatsoever can be accepted by Knight Frank LLP for any loss or damage resultant from any use of, reliance on or reference to the contents of this document. As a general report, this material does not necessarily represent the view of Knight Frank LLP in relation to particular properties or projects. Reproduction of this report in whole or in part is not allowed without prior written approval of Knight Frank LLP to the form and content within which it appears. Knight Frank LLP is a limited liability partnership registered in England with registered number OC305934. Our registered office is 55 Baker Street, London, W1U 8AN, where you may look at a list of members' names.

RECENT MARKET-LEADING RESEARCH PUBLICATIONS



[Vienna Office Market Outlook - Q2 2016](#)



[Bucharest Office Market Outlook - Q2 2016](#)



[European Quarterly - Q1 2016](#)



[Global Cities Report - 2016](#)