

# THE RURAL REPORT

Winter 2013/2014

RURAL RESEARCH

## **THE CRITICAL LIST**

Threats and opportunities for landowners

## **FARMLAND MARKET**

Agricultural land values hit record high

## **FRACKED OFF**

Shale gas – your questions answered

## **COUNTRYSIDE CONCERNS**

Our rural sentiment survey results



FROM COMMERCIAL FARMS



TO LARGE SCALE RURAL ACQUISITIONS



## KNIGHT FRANK KNOWS FARMS AND ESTATES

Tom Raynham, Head of Agricultural Investment Acquisitions, has bought, sold and managed farms in the UK for the last 10 years.

This provides a unique position in the market today where he is the only agent specialising in the acquisition of large scale agricultural investments.

To discover how Tom can assist you with your acquisition requirements, or introduce you privately to his clients to release capital from your own farms, please contact;

**020 7861 1578**  
**tom.raynham@knightfrank.com**  
**KnightFrank.co.uk**



WE OFFER ADVICE ON AGRICULTURAL INVESTMENTS

# WELCOME

## CONTENT

- 04 THE CRITICAL LIST**  
Threats and opportunities landowners shouldn't ignore.
- 06 FARMLAND MARKET**  
The latest trends and property highlights.
- 10 CLIENT CASE STUDY**  
Renovating an historic manor house.
- 12 FRACKED OFF**  
Shale gas guide for landowners.
- 14 WHAT'S BOTHERING YOU**  
The results of the Knight Frank Rural Sentiment Survey.
- 16 THE BIG INTERVIEW**  
NFU President Peter Kendall.
- 18 VALUATION MATTERS**  
Tom Barrow's valuation update.

### Welcome to the Winter 2013/2014 issue of The Rural Report

The opportunities and challenges facing rural property owners are constantly growing in number and evolving.

Keeping track of all the issues that affect their own estate, farm or business and assessing their potential impact can seem a full time operation. I hope that The Rural Report and our other publications go some way towards helping.

Our "Critical List" on page 4 rounds up the current key developments that we think rural estates should be aware of. Some are threats that may need to be addressed; others are opportunities that could offer significant benefits.

One of the big issues dividing the UK at the moment is fracking. Some see it as a panacea, potentially reducing the UK's reliance on imported energy; others view it as an environmental disaster waiting to happen.

Christopher Smith, our Head of Renewables and Energy, offers an impartial guide on page 12 for those land owners who think they may have shale gas deposits under their land.

While not quite so controversial, poor rural broadband is worrying far more of you than fracking, according to the results of our new Rural Sentiment Survey, which I discuss on page 14.

Elsewhere in the report we look at the benefits of professional project management when renovating historic buildings (page 10), round up the farmland market (page 6) and quiz the

NFU's President Peter Kendall about the impact of CAP reform (page 16).

I hope you enjoy this edition of The Rural Report. Please get in touch if we can help in any way. Our contacts are on the back page or you can use the postage-paid reply card if you prefer.




**James Del Mar**  
*Head of Rural Consultancy*

Front Cover: Stephen Dorey

### FIND US ONLINE

[KnightFrank.co.uk/Rural](http://KnightFrank.co.uk/Rural)  
[KnightFrank.co.uk/HS2](http://KnightFrank.co.uk/HS2)  
[KnightFrankblog.com/ruralbulletin](http://KnightFrankblog.com/ruralbulletin)

 @KFRuralProperty  
 @KnightFrankHS2

### THE RURAL REPORT

**Written and edited by**  
 Andrew Shirley  
[andrew.shirley@knightfrank.com](mailto:andrew.shirley@knightfrank.com)

**Marketing** Susie Cain  
[susie.cain@knightfrank.com](mailto:susie.cain@knightfrank.com)

**Design & art direction**  
 Quiddity Media Limited  
[quidditymedia.co.uk](http://quidditymedia.co.uk)

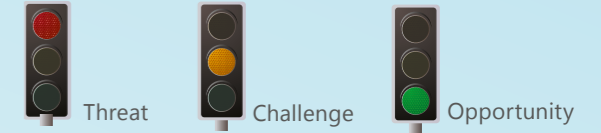
**Printing** Pureprint  
[pureprint.com](http://pureprint.com)

Published by Knight Frank LLP

©Knight Frank LLP. This report is published for general information only and not to be relied upon in any way. Although high standards have been used in the preparation of the information, analysis, views and projections presented in this report, no responsibility or liability whatsoever can be accepted by Knight Frank LLP for any loss or damage resultant from any use of, reliance on or reference to the contents of this document. As a general report, this material does not necessarily represent the view of Knight Frank LLP in relation to particular properties or projects. Reproduction of this report in whole or in part is not allowed without prior written approval of Knight Frank to the form and content within which it appears. Knight Frank LLP is a limited liability partnership registered in England with registered number OC305934. Our registered office is 55 Baker Street, London, W1U 8AN, where you may look at a list of members' names.

# THE CRITICAL LIST

Knight Frank's rural property experts highlight the key threats and opportunities that estate owners should be investigating now



## RENEWABLE ENERGY

### RENEWABLE HEAT PAYMENTS FOR HOMEOWNERS

The Renewable Heat Incentive will belatedly be extended to domestic properties in 2014. This means homeowners who generate heat from an eligible renewable source, such as a biomass boiler or ground-source heat pump, will be able to claim a payment for every unit of heat produced. Given the rising cost of oil, this could be a big benefit to some estates, particularly those that have their own source of wood fuel.

**ACTION POINT:** Assess whether renewable heat could reduce your fuel bills

**Edward Holloway**  
*Renewable Energy Consultant*

### RENEWABLE ELECTRICITY SUPPORT CUTS

The subsidies for generating renewable electricity are due to be cut again in 2014 and the government is talking about discontinuing the Feed-in Tariff (FIT) entirely for some technologies within the next five years. Anybody considering installing a solar PV

system should weigh up their options quickly while it is still possible to claim FITs. If energy prices do continue to rise, however, solar PV systems may soon be viable without any financial support.

**ACTION POINT:** Assess whether renewable electricity makes sense for you

**Edward Holloway**  
*Renewable Energy Consultant*

### BIOGAS FEASIBILITY GRANTS

Installing an Anaerobic Digester (AD) to create renewable energy is an expensive business, but the government has launched a new £10,000 grant scheme that will pay for a feasibility study to investigate the viability of AD for an individual farm or estate. The government is also consulting on FIT rates for small-scale AD plants.

**ACTION POINT:** Investigate whether AD could work for you

**Christopher Smith**  
*Head of Renewable Energy*

**For our guide to Fracking please see page 12**

## AGRICULTURE

### CAP REFORM

The main elements of the latest reform of the EU's Common Agricultural Policy (CAP) have now been agreed. Although anybody in England currently claiming farm support payments will automatically see their existing entitlements rolled over when the new system is introduced in 2015, there are a number of issues that require consideration now. Claimants will need to work out how they will satisfy a new basket of environmental requirements, which could disrupt existing crop rotations, as well as replace the loss of income caused by an overall reduction in the CAP budget, increased modulation and cuts to support claims over €150,000.

**ACTION POINT:** Make sure you are aware of the potential implications of CAP reform on your business

**Percy Lawson**  
*Estate & Farm Management*

### COMMODITY PRICES

Cereal prices are still extremely volatile and some way below the £200/t market peak seen last year. This will have implications not just for the bottom line of those estates that farm in-hand, but could also have a bearing on any on-going rent review discussions.

**ACTION POINT:** Consider grain marketing strategies to mitigate against price volatility

**Paddy Hoare**  
*Estate & Farm Management*

## PLANNING

### ENHANCED PROTECTION FROM VILLAGE GREEN DESIGNATIONS

New rules mean it is now easier for landowners to protect their land from being designated as a Village Green by members of the public using it for recreational purposes. Once designated, land loses any development potential it may have had and subsequently will see a fall in its capital value, so ensuring all your land is protected using the straightforward new procedures makes sense.

**ACTION POINT:** Take advice on protecting your land from being designated as a village green

**Alastair Paul**  
*Investment Land Management*

### NEW RESIDENTIAL DEVELOPMENT RIGHTS FOR AGRICULTURAL BUILDINGS

In addition to the new permitted development rights – commercial to residential use and agricultural to commercial use – discussed in the last edition of The Rural Report, the government is now proposing that landowners will be able to convert their redundant farm buildings directly to residential homes without the necessity to apply for full planning consent. Up to three residential units, subject to size restrictions, would be allowed.

**ACTION POINT:** Consider conducting an alternative uses review of your redundant farm buildings

**James Carter-Brown**  
*Building Consultancy*

## ADMINISTRATION

### STAFF SALARIES

The scrapping of the Agricultural Wages Board (AWB) means employers, on the one hand, are no longer bound by its various pay bands, annual salary increases and worker benefits. However, on the other, they will need to spend time researching alternative ways to determine appropriate pay and conditions for those employed under AWB terms and conditions and discuss them in more detail with staff to avoid any potential disputes or misunderstandings. Alternative employment legislation such as the National Minimum Wage will also have to be complied with.

**ACTION POINT:** Assess alternatives to the AWB for staff remuneration

**Angus Harley**  
*Country House Consultancy*

### WORKPLACE PENSIONS

Auto enrolment of all staff aged between 22 and statutory retirement age and paid over £9,440 into workplace pensions will start in 2015 for businesses with fewer than 30 staff. Although this will increase costs and administration, it could also be a way to engage and motivate staff.

**ACTION POINT:** Find out when auto enrolment applies to your business

**Edward Dixon**  
*Estate Management*

## ESTATE STRUCTURING

### INHERITANCE TAX (IHT) RELIEF CLAMPDOWN

For landed estates the inability to obtain IHT relief from new debt secured against non-relievable assets is a worry; this has been a commonly used way to legitimately mitigate IHT liabilities.

**ACTION POINT:** Review IHT mitigation strategies for your estate

**James Del Mar**  
*Head of Rural Consultancy*

### INTEREST RATES

Although the Bank of England base rate remain at record low levels, the bank's new chief Mark Carney has said they could rise when unemployment drops below a certain level, which could be hit more quickly than expected if the UK economy continues to grow. This means longer-term debt could become more expensive.

**ACTION POINT:** Look at borrowing options now if you are considering a large investment into your rural property

**Simon Gammon**  
*Knight Frank Finance*



To find out more about the topics highlighted on these pages or any other rural property ownership issues, please do get in touch. The contact details for Knight Frank's rural property teams are at the back of the report. For more regular updates you can now follow Knight Frank's new rural blog at [knightfrankblog.com/ruralbulletin](http://knightfrankblog.com/ruralbulletin)

# LAND VALUES HIT RECORD HIGH

Farmland values across the UK remain buoyant as demand continues to outpace supply

The average value of farmland in England rose by 11% during 2013 to £6,882/acre, according to the results of the Knight Frank Farmland Index.

This was the strongest annual performance since 2010 and takes growth over the past 10 years to 210%.

Over the course of the year, farmland outperformed residential property, even in prime central London, matched the rise in the value of the FTSE 100 and outshone gold, which lost a quarter of its value.

Demand from farmers, lifestyle buyers and investors, coupled with historically low availability, is helping to push up prices.

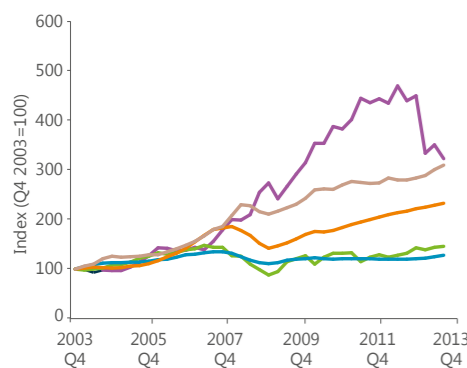
"We are seeing a steady increase in the number of enquiries from individuals and funds, both in the UK and overseas, looking to diversify their investment portfolios," says Tom Raynham, Head of Knight Frank's Agricultural Investment Acquisitions team, who has just helped an overseas investor to acquire an arable unit of over 2,000 acres.

Large blocks of good arable farmland, preferably over 1,000 acres, are most in demand and are making between £8,000/acre to upwards of £10,000/acre. Capital growth is a key driver for investors.

Prices have risen every year since 1999 and are predicted to rise by at least 5% annually over

## England Farmland 10-year capital growth vs other assets

Source: Knight Frank Residential Research



Legend: Gold\* (purple), FTSE 100\* (green), UK house prices (blue), English farmland (orange), Prime central London residential (yellow)

\*To 17th December

the next three years. Investors, however, are also looking more closely at annual yields.

"From what I am seeing now, people start to get very interested if there is also the potential for additional income from the likes of renewable energy or a diversified farm business," says Tom.

The resurgence in agricultural research is also adding to the sector's investment potential with some exciting developments on the horizon that could help to boost returns with improved technology and crop yields.

Farmers are also prepared to pay strong prices for land, but are becoming more careful about what they bid on in the light of recent price increases and a dip in the price of grain. Location and quality have to be right.

"More marginal land hasn't seen the same sort of growth," says James Prewett, Head of Knight Frank's Regional Farms team. "I don't think prices have weakened, but they remain more stable."

An interesting trend that is starting to emerge is the number of dairy farms that are being sold and kept as milk-producing units. "It's not something I have seen for quite a while," says James who has just acquired a dairy farm in Wales for a client.

Milk prices have risen recently, but input and feed costs are still an issue meaning those farms with plenty of good grass and lower overheads are most in demand.

Amenity or "lifestyle" buyers are also prepared to pay a premium above agricultural values for the right farms. Again, however, they need to be in the right location with a main house that is well proportioned, but not overly large, says James.

In Scotland, farmland values rose on average by 7% in the second half of the year, according to the latest results from the Knight Frank Scottish Farmland Index.

Arable land performed most strongly, moving up by almost 10%. Top quality cropping land in Scotland is now worth on average £8,468/acre. Hill land grew by 2% and is now worth on average £692/acre. Grassland rose by 4% to £2,783/acre for improved permanent pasture.

### Your Key Contacts

- **James Denne**, Scotland  
T +44 1578 722 814
- **James Denne**, N England  
T +44 1578 722 814
- **Tim Waring**, Yorks and Lancs  
T +44 1423 535 373
- **Will Kerton**, West  
T +44 1905 746 883
- **James Way**, Midlands  
T +44 1789 297 735
- **Tom Raynham**, East  
T +44 20 7861 1578
- **Anthony Clay**, Wales  
T +44 1432 273 087
- **James Prewett**, Welsh Borders  
T +44 1285 659 771
- **Will Morrison**, South West  
T +44 1392 848 823
- **Atty Beor-Roberts**, Cotswolds  
T +44 1285 659 771
- **Will Matthews**, South East  
T +44 20 7861 1440

### Type of Land

- Arable
- Pasture
- Hill

### Knight Frank Office

- 1 Ascot\*
- 2 Basingstoke
- 3 Bath
- 4 Beaconsfield\*
- 5 Berkhamsted
- 6 Bishop's Stortford
- 7 Bristol
- 8 Cheltenham
- 9 Cirencester
- 10 Cobham \*
- 11 Edinburgh
- 12 Esher\*
- 13 Exeter
- 14 Guildford\*
- 15 Harrogate
- 16 Haslemere
- 17 Henley\*
- 18 Hereford
- 19 Horsham
- 20 Hungerford
- 21 Kingham
- 22 Lauder
- 23 London †
- 24 Oxford
- 25 Sevenoaks
- 26 Sherborne
- 27 Stratford-upon-Avon
- 28 Stow-on-the-Wold
- 29 Tunbridge Wells
- 30 Virginia Water
- 31 Winchester
- 32 Worcester

\* Also provides a lettings service  
† 20 offices across Central London offering sales and lettings

## TYPICAL UK FARMLAND VALUES £/ACRE



These latest increases mean the value of Scottish farmland has risen by 11% over the past 12 months and by 220% over a 10-year period.

"We are seeing increased interest from investors, and farmers who are still keen to buy land when the chance arises," says James Denne, Head of Scottish Farm Sales, who has just agreed sales on a number of large, moderate quality blocks of arable land from around £6,500/acre to £8,000/acre.

"With direct subsidies to farmers set to continue under the recent agreement on reform of the Common Agricultural Policy (CAP), farmland remains an attractive proposition," he adds.

To some, farmland's continued popularity might seem surprising given the increasingly heated debate over Scottish independence,

but this is a "red herring", according to Michael Ireland, Head of Rural Valuations in Scotland.

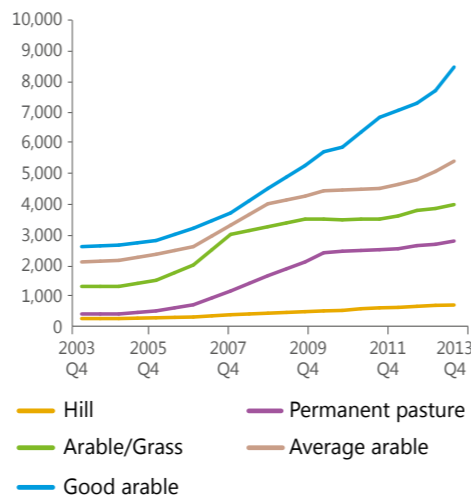
"Whether Scotland is part of the United Kingdom or not, farmers will still benefit from CAP so I don't really believe the independence issue will weigh too heavily on the farmland market."

At the top end of the market, however, there is some uncertainty, says Ran Morgan, Head of Estate Sales. "We are not seeing many big estates coming to the market at the moment, which I think is down to vendors being unduly cautious prior to the vote on independence.

"The fact that Scotland's estates boasts some of the world's premier sporting opportunities and best landscapes will not change whether the country is independent or not. People from across the globe will still want to buy here."

**Scottish land values by type (£/acre)**

Source: Knight Frank Residential Research



# PROPERTY HIGHLIGHTS

The Knight Frank Farms & Estates team sells a diverse range of rural property across Britain that appeals to all types of buyers, from investors to overseas lifestyle purchasers. The properties on these pages provide a snapshot of what is currently available



**HOLMINGHAM FARM**

**Farm with superb fishing**

For the avid angler, Holmingham, near Bampton, Devon, offers an amazing opportunity to enjoy over 1,300 yards of double-bank salmon fishing on the Exe.

"Opportunities to catch 50 salmon a year just two and a half hours from London on the train are pretty rare," says George Bramley, who is handling the sale. There are also two stocked fishing lakes and an

abundance of wildlife including a herd of Red deer.

The 175-acre grass farm spreads over a large loop in the river that surrounds a wooded escarpment and former quarry with many remarkable cliff faces and plateaus. "It makes the property incredibly scenic and feel much more extensive than 175 acres," adds George.

A five-bed house with lovely south-facing gardens has stunning views of the farm.

**Holmingham Farm** is for sale with a guide price in excess of £2.25m

For more details please contact: **George Bramley on 020 7861 1069**

**Historic estate**

Shakenhurst's history can be traced back to Domesday and this is only the second time the estate, which is on the Worcestershire/Shropshire border, has been sold since 1349.

Its current owners, who have extensively renovated the property, purchased it in 2010 from the descendants of John de Meysey, who was granted the estate by Edward III for services rendered overseas.

Will Matthews of our Estates team says the 1,324-acre estate, priced at £16m, is attracting a lot of interest.

"It is a very good-looking, manageable house surrounded by a large block of some very pretty, undulating countryside.

"Generally I would expect an estate in this location to be bought by somebody from the UK, but we have had more international interest in estates further from London recently, so it could go either way," adds Will.

As well as Shakenhurst Hall, a Grade II\* 12-bedroom house, the estate includes 15 farmhouses and cottages, almost three



**THE SHAKENHURST ESTATE**

miles of trout fishing on the River Rea and a high-quality shoot.

Apart from 17 acres of farmland let under an Agricultural Holdings Act tenancy, the land is all farmed in hand, while the cottages and farmhouses are let under Assured Shorthold Tenancies.

"The new owner would have total flexibility to manage the estate as they so wished" said

Will. "If they don't want to farm the land themselves there are plenty of local farmers who would rent or contract farm it."

**The Shakenhurst Estate** is for sale as a whole or in six lots with a guide price of excess £16m.

For more details please contact: **Will Matthews on 020 7861 1440**

**Picturesque Scottish livestock unit**

Lochmailing, near Auldgirth, Dumfries & Galloway, is situated in the picturesque Nithsdale, and is being sold following the purchase of a larger farm by its owner.

The 186-acre farm comes with a good range of modern buildings and currently supports 112 cows and followers and 330 ewes to the tup. All the fields have access to mains water and there is an 8.5-acre block of woodland.

"It's a really nice unit that has been very well run and maintained and would make an ideal starter unit for a new entrant or farmer's son or daughter looking to strike out on their own," says James Denne of our Scottish Farms team.

"The main three or four-bedroomed house is extremely comfortable, but not so large that a buyer who wants to get into farming



**LOCHMAILING**

is spending all their money on residential property," he adds.

The farm also includes a three-bed cottage that could be let for £450 a month and planning consent for a 15kW wind turbine.

**Lochmailing** is for sale with a guide price in excess of £1.15m including single farm payments

For more details please contact: **James Denne on 01578 722 814**

## THE BEST OF THE REST

A selection of other properties for sale or recently sold.

**The Hadspen House Estate, Somerset**

A fantastic west country estate

**Acreage:** 854

**Guide price:** £13m

**Status:** Sold

**Freelands Farm, Oxfordshire**

A unique Oxfordshire commercial farming estate

**Acreage:** 1,024

**Guide price:** £12m

**Status:** Sold

**The Pheasantry, Hampshire**

A secluded country house surrounded by woodland

**Acreage:** 334

**Guide price:** £7.95m

**Status:** For Sale

**Franchise Manor, East Sussex**

A substantial and historic country house

**Acreage:** 449

**Guide price:** £11m

**Status:** Sold

**Toddington Manor, Bedfordshire**

An historic country house

**Acreage:** 176

**Guide price:** £2.75m

**Status:** Sold

**The Blackwood Estate, Dumfries, Scotland**

Lovely sporting and farming estate

**Acreage:** 1,248

**Guide price:** £4.5m

**Status:** Sold

Kindred spirits: James Carter-Brown (right) and client Sean Swallow's shared attention to detail and planning has helped transform Scatterford.



# HOUSE & GARDEN

**Knight Frank's Building Consultancy team was the first choice when a leading garden designer needed help with the complete renovation of his listed country house. Andrew Shirley pays a visit.**

**Words:** Andrew Shirley **Image:** Andrew Pedley

As I discuss the renovation of Scatterford with James Carter-Brown, Head of Knight Frank's Building Consultancy team, and garden designer Sean Swallow, it soon becomes clear why the two get on so well.

Both share the same attention to detail and put a huge amount of emphasis on client satisfaction.

"I really try to make the garden design process a delight and as stress free and pleasurable for my clients as possible", says Sean, as he proudly shows me around the idyllic Gloucestershire manor house and grounds he fell in love with and bought three years ago.

This ethos also effectively sums up the approach of James and his team, who have designed and project managed the sensitive conversion of Scatterford from a house that was full of character, but in desperate need of some TLC, to a fully modernised residence, without losing any of its charm or sense of history.

"I had a plan and a clear idea of what I wanted to achieve with the house, but involving Knight Frank took away all the technical worries and complicated issues and ensured the project was completed on time and within budget," says Sean.

Using Knight Frank from the very beginning of the renovation process allowed him to concentrate on what he loves doing best – creating a stunning garden to blend harmoniously with the buildings around it.

People often don't realise the value of an experienced project manager until they try to manage without one, points out James. "Anybody who has watched Grand Designs on the television knows that building projects, whether restorations or new builds, can be very exciting, but rarely go strictly to plan."

"Professional project managers anticipate the issues that might arise and plan ahead to avoid them wherever possible. Even when the unexpected does happen, they are there to take the burden, rather than the client."

Working with historic buildings – parts of Scatterford date from the 16th century – can often be particularly challenging, he explains.

"There is so much to think about: listed buildings consents to obtain, ecology

reports to commission, specialist craftsmen to source, to name but a few, and a raft of small details, right down to the specification of the appropriate lime plaster, to consider.

"Because of damp issues, for example, we had to do a lot of remedial work at Scatterford and replacing the roof meant negotiating with the conservation authorities and working around extremely strict bat protection legislation."

All of this makes choosing the right contractor for each project vital. In the case of Scatterford, Knight Frank organised a competitive tender that was won by Monmouth firm Anthony A Davies Group, which has a strong track record of working with historic buildings and local materials.

As well as finding the right people to work on a project, contract administration is also a crucial service that James helps his clients with. "Putting in place a contract that is realistic and fair to all parties and clearly sets

out what should happen if there are delays or differences in opinion can really help to avoid uncomfortable situations further down the line."

While Knight Frank was overseeing the internal and external renovation of the house, which included new plumbing, central heating and electrical works, making all the fireplaces useable again, installing a new kitchen and bathrooms, and converting an old adjoining cow byre into an eye-catching glass-fronted design studio – sourcing the huge pieces of glazing required was a particular challenge – Sean was busy realising his dream for the garden.

This involved shifting 2,000 cubic metres of soil from the back of the house to create a sweeping terraced, almost amphitheatre-like, bowl with the house at its focus. "Although plants are obviously incredibly important in a garden, I think structure, space and form are also vital," says Sean.

He has deliberately created a garden that, like the house, looks as if it has evolved over time, rather than been planned in its entirety from scratch. Existing features like an old apple tree and dry stone walls have been retained as focal points to complement new additions, such as a pool, dark-lined to turn its surface into an inky mirror, which forms the centrepiece of a lower terrace.

Collaboration and communication is a big part of both garden design and project management, agree James and Sean.

"I like to think of myself as the interface, not just between the client and the main contractor, but also between all the parties working on the project. Establishing the correct terms of engagement for every stakeholder is critical," says James.

On projects without effective project management or communication, one sub-contractor, for example, may need to do something requiring work that has already been completed by another person to be altered or entirely undone," says James.

"It's also about listening to your clients and creating something for them that they really want," adds Sean. "There is no point trying to force something on them just because it is fashionable or you really like the idea of it yourself."

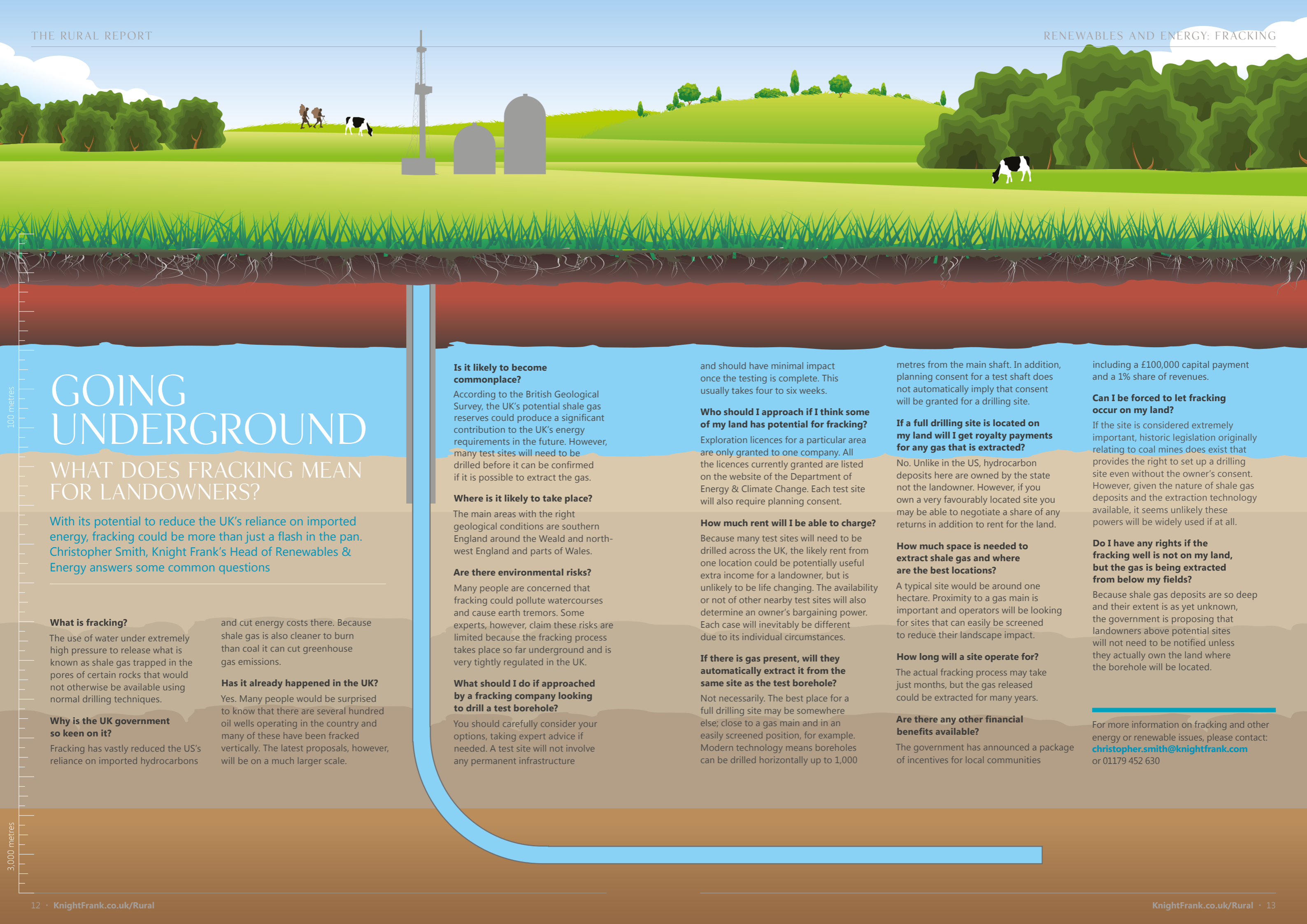
Having spent the afternoon at Scatterford, it's clear that the house and its gardens are the embodiment of this approach and clearly reflect James' and Sean's expertise and dedication to their work. Harmonious and updated, but still with a strong link to the past and all delivered with the minimum of fuss and stress.

For advice on all building projects, including project management, architecture, surveys and party wall issues, please contact James Carter-Brown: [james.carter-brown@knightfrank.com](mailto:james.carter-brown@knightfrank.com)

To contact Sean Swallow please email: [sean@seanswallow.com](mailto:sean@seanswallow.com) 07525 941 062

## WHY USE A PROJECT MANAGER

- 1. Project more likely to be delivered within budget and on time**
- 2. Provides access to trusted suppliers and contractors**
- 3. Removes stress of dealing directly with contractors and suppliers**
- 4. Co-ordinates everybody working on projects**
- 5. Ensures compliance with all legal, planning and environmental obligations**



# GOING UNDERGROUND

## WHAT DOES FRACKING MEAN FOR LANDOWNERS?

With its potential to reduce the UK's reliance on imported energy, fracking could be more than just a flash in the pan. Christopher Smith, Knight Frank's Head of Renewables & Energy answers some common questions

### What is fracking?

The use of water under extremely high pressure to release what is known as shale gas trapped in the pores of certain rocks that would not otherwise be available using normal drilling techniques.

### Why is the UK government so keen on it?

Fracking has vastly reduced the US's reliance on imported hydrocarbons

and cut energy costs there. Because shale gas is also cleaner to burn than coal it can cut greenhouse gas emissions.

### Has it already happened in the UK?

Yes. Many people would be surprised to know that there are several hundred oil wells operating in the country and many of these have been fracked vertically. The latest proposals, however, will be on a much larger scale.

### Is it likely to become commonplace?

According to the British Geological Survey, the UK's potential shale gas reserves could produce a significant contribution to the UK's energy requirements in the future. However, many test sites will need to be drilled before it can be confirmed if it is possible to extract the gas.

### Where is it likely to take place?

The main areas with the right geological conditions are southern England around the Weald and north-west England and parts of Wales.

### Are there environmental risks?

Many people are concerned that fracking could pollute watercourses and cause earth tremors. Some experts, however, claim these risks are limited because the fracking process takes place so far underground and is very tightly regulated in the UK.

### What should I do if approached by a fracking company looking to drill a test borehole?

You should carefully consider your options, taking expert advice if needed. A test site will not involve any permanent infrastructure

and should have minimal impact once the testing is complete. This usually takes four to six weeks.

### Who should I approach if I think some of my land has potential for fracking?

Exploration licences for a particular area are only granted to one company. All the licences currently granted are listed on the website of the Department of Energy & Climate Change. Each test site will also require planning consent.

### How much rent will I be able to charge?

Because many test sites will need to be drilled across the UK, the likely rent from one location could be potentially useful extra income for a landowner, but is unlikely to be life changing. The availability or not of other nearby test sites will also determine an owner's bargaining power. Each case will inevitably be different due to its individual circumstances.

### If there is gas present, will they automatically extract it from the same site as the test borehole?

Not necessarily. The best place for a full drilling site may be somewhere else; close to a gas main and in an easily screened position, for example. Modern technology means boreholes can be drilled horizontally up to 1,000

metres from the main shaft. In addition, planning consent for a test shaft does not automatically imply that consent will be granted for a drilling site.

### If a full drilling site is located on my land will I get royalty payments for any gas that is extracted?

No. Unlike in the US, hydrocarbon deposits here are owned by the state not the landowner. However, if you own a very favourably located site you may be able to negotiate a share of any returns in addition to rent for the land.

### How much space is needed to extract shale gas and where are the best locations?

A typical site would be around one hectare. Proximity to a gas main is important and operators will be looking for sites that can easily be screened to reduce their landscape impact.

### How long will a site operate for?

The actual fracking process may take just months, but the gas released could be extracted for many years.

### Are there any other financial benefits available?

The government has announced a package of incentives for local communities

including a £100,000 capital payment and a 1% share of revenues.

### Can I be forced to let fracking occur on my land?

If the site is considered extremely important, historic legislation originally relating to coal mines does exist that provides the right to set up a drilling site even without the owner's consent. However, given the nature of shale gas deposits and the extraction technology available, it seems unlikely these powers will be widely used if at all.

### Do I have any rights if the fracking well is not on my land, but the gas is being extracted from below my fields?

Because shale gas deposits are so deep and their extent is as yet unknown, the government is proposing that landowners above potential sites will not need to be notified unless they actually own the land where the borehole will be located.

For more information on fracking and other energy or renewable issues, please contact: [christopher.smith@knightfrank.com](mailto:christopher.smith@knightfrank.com) or 01179 452 630

# WHAT'S BOTHERING YOU?

James Del Mar, Head of Rural Consultancy, reveals and analyses the results of Knight Frank's new Rural Sentiment Survey

HS2, wind farms, fracking; they've all been grabbing the headlines recently. But when we asked those living and working in the countryside to tell us what was really concerning them, it was the more prosaic day-to-day issues that led the way.

Almost 50% of the respondents to our survey said that poor broadband was either affecting the profitability of their business or quality of life now. Only 11% said it was not an issue that was of concern to them (Figure 1).

Around 16% of all respondents said fly tipping was actually affecting the profitability of their businesses – increasing to 20% for estates – while 24% said it had an impact on their quality of life. Just 12% did not consider it an issue they were worried about.

By contrast, over 45% of people said fracking was not of concern to them, with almost 19% saying it could even improve their quality of life or business profitability.

Despite the acres of negative press it has garnered, even the proposed controversial high-speed rail link between London, Birmingham, Manchester and Leeds (HS2) did not bother too many people. Just over 60% of all respondents said it was an issue that did not concern them, second only to Scottish independence (62%).

Unsurprisingly, however, those living in Scotland who took the survey were less sanguine about the prospect of independence. Almost 90% said it was already affecting the profitability of their business or quality of life, or would do so in the future.

## THE RENEWABLE PARADOX

Renewable energy is one of those topics that people often have mixed opinions about and our survey results echo that.

In general, people largely believe it is good to cut down on fossil use – almost 50% of those surveyed said they thought renewable energy would be beneficial for their quality of life or business profitability in the future – but when it comes to wind farms or large-scale solar farms they become less enthusiastic.

Almost 40% of respondents said even though wind farms would not affect them personally, they were worried about their impact on the countryside. For rural homeowners that figure rose to 50%. The respective figures for solar farms were 35% and 45%.

What we are finding now with many of our clients is that renewable energy can be a win-win situation. Technologies such as biomass boilers or ground-source heat can be discrete and unobtrusive, while delivering significant economic benefits.

Even sensibly located larger-scale schemes do not have to be controversial, especially if site owners engage with local communities.

## GOVERNMENT ACTION

As well as asking our survey respondents how they felt about various rural issues, we also asked what they considered were the three most important problems that the government should be tackling to improve

the countryside as a place to live or do business (Figure 2).

In both cases broadband was listed as a top priority by just over 70% of all those who took the survey.

Even when we break the results down by respondent type and region, improving broadband is without fail considered the number one priority to improve the countryside as a place to work.

In terms of making the countryside a better place to live, only respondents in Wales and the North of England didn't put providing better access to the internet on the top of their government wish list.

These results clearly show how the internet has become entrenched in every aspect of our lives and how vital a fast, reliable broadband connection is for anybody living in the country now.

They also send a strong message to the government that if it really wants to support rural business generation it must provide the same quality broadband that those in the city take for granted.

From my own experience of dealing with rural businesses, there is a huge amount of innovation and entrepreneurship happening at the moment. It would be a shame if that was stifled due to poor broadband.

Hopefully the government's effort in this area will be spurred on by the recent release of a report commissioned by the Department for Culture Media and Sport, which shows faster broadband speeds could boost the rural economy by £4.6bn a year.

Clamping down on fly tipping was considered the second-most important issue that would improve the countryside as a place to live by most categories of respondent.

Again, the survey results show that it is the things that affect their everyday lives which

people would like the government to sort out most urgently.

Unsurprisingly perhaps, CAP reform was the biggest issue that farmers and estate owners thought the government should focus on to make the countryside a better place to do business.

Now that we pretty much know what the outcome of the reform process will be for farming businesses in the UK, I expect most of our respondents will feel as if the government could have done more for agriculture. NFU President Peter Kendall, who we interview on the next page, certainly feels that way.

Taking into account all survey responses, improving rural transport and tackling the scourge of Bovine TB were other key areas those taking the survey wanted the government to sort out.

Although the big media issues like HS2, fracking and wind farms were overall considered low priorities for the government, there were regional variations that didn't come as too much of a surprise. More respondents in the south-east, for example, felt HS2 was something the government should be focusing on to make the countryside a better place to live.

## BUSINESS BOOST

One of the most encouraging results from the survey was that rural businesses are becoming more optimistic about their prospects. Almost 48% expect their profitability to increase in 2014, compared with 30% this year (Figure 3).

As the results of the survey show, rural businesses face many challenges. But with the right government and professional support most will continue to prosper.

For strategic rural business advice please contact: [james.del.mar@knightfrank.com](mailto:james.del.mar@knightfrank.com)

For the full survey results go to [knightfrankblog.com/ruralbulletin](http://knightfrankblog.com/ruralbulletin) or email [andrew.shirley@knightfrank.com](mailto:andrew.shirley@knightfrank.com)

Figure 2 What respondents said should be the government's priorities to improve the countryside as a place to live and work\*



\*Respondents could select up to three issues

Figure 3 How rural businesses expect their profitability to change

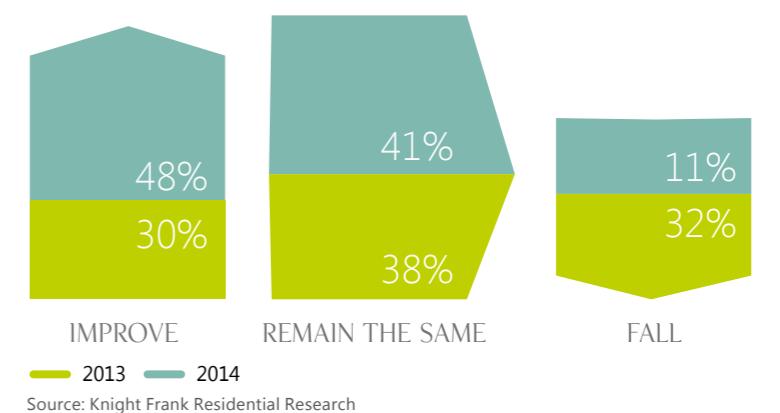
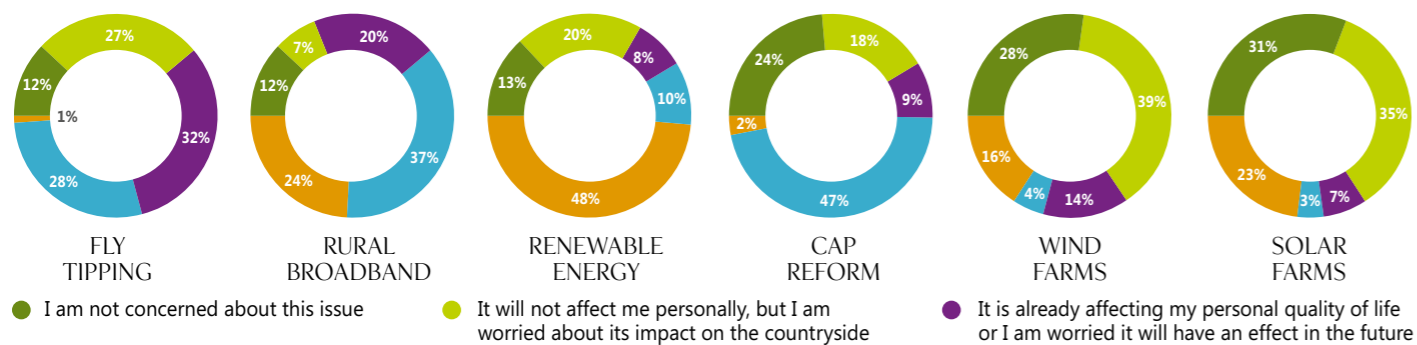
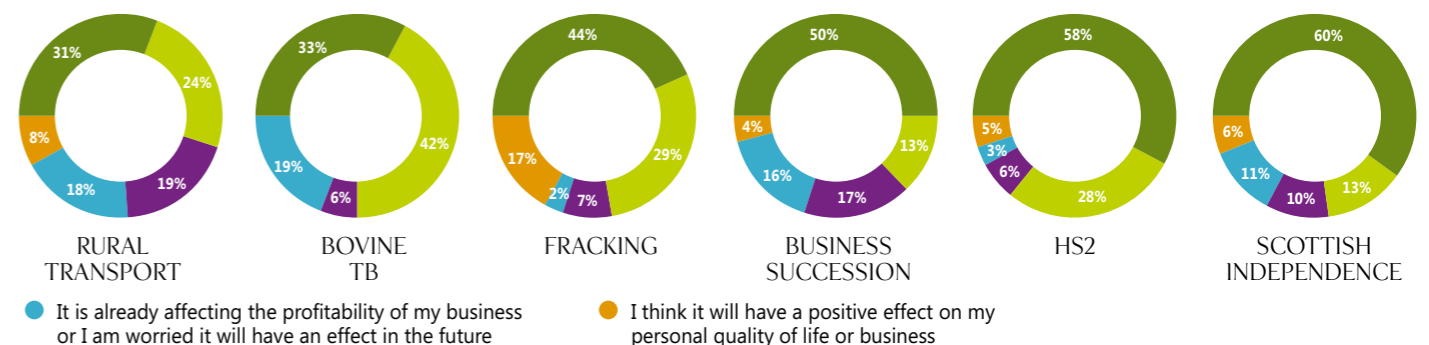


Figure 1 What survey respondents think about key rural issues\*



\*Respondents were asked to select the option for each issue that most reflected their views  
Source: Knight Frank Residential Research





# STANDING UP FOR FARMING

NFU President Peter Kendall talks to Rural Report editor Andrew Shirley about CAP reform and other important issues for farmers and landowners

**RURAL REPORT** It has taken long enough, but how radical has this round of CAP reform really been?

**PETER KENDALL** The NFU remains disappointed with this round of CAP reform. It lacks the strategic vision that this vital policy could have provided farmers in facing the significant global challenges and opportunities that lie ahead for the sector. It's certainly not the progressive reforms that we've consistently advocated.

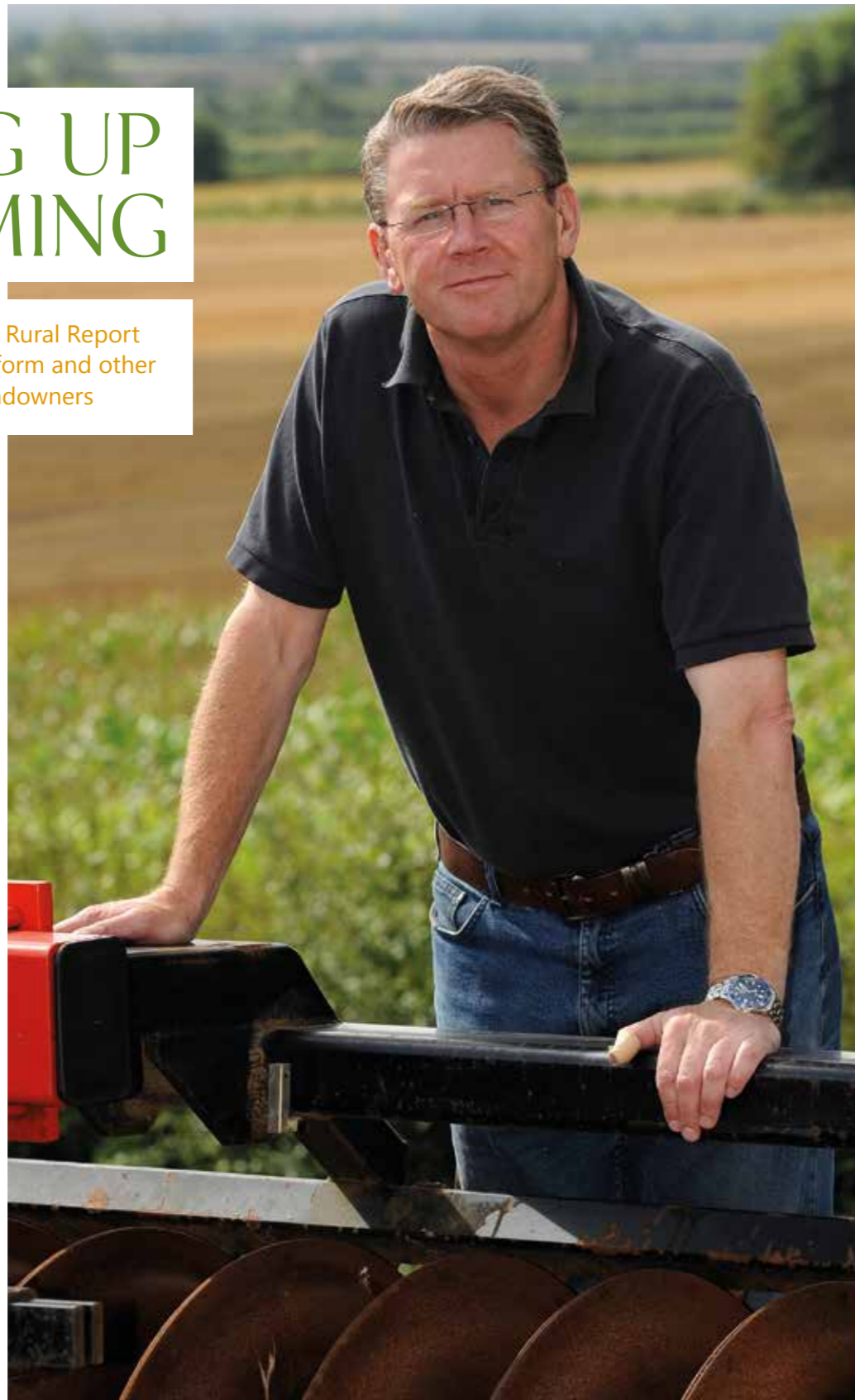
We shouldn't forget that the last set of reforms saw farmers in England experience more radical reform of the CAP than farmers in other parts of the UK and EU. Full decoupling and the move towards area based payments saw English farmers face the largest deductions in direct payments of all EU farmers. This latest reform was the chance to give more balance to the CAP in its implementation across Europe.

**RR** What will be the biggest differences farmers will notice compared with the old CAP regime?

**PK** The major changes to CAP will revolve around the so-called "greening" measures. We know that the new CAP will include mandatory environmental conditions which farmers claiming direct support payments in the future will have to undertake based on crop diversification, ecological focus areas and permanent grassland. What is still to be decided is how Defra will implement those greening measures and what it will mean for the future of agri-environment schemes. It is critical that we don't see "gold-plating" of these new rules.

**RR** How influential have farming groups like the NFU been during the reform process?

**PK** The farm lobby at a European level remains important. Through our office in



Brussels and our active role within Copa-Cogeca, I think the NFU remains at the heart of that lobbying effort. The changes from the original Commission proposals are proof of that. Greening is certainly more workable than it was. We need to remember the work's not finished yet, and there is still lots to influence on how CAP is implemented in England.

**RR** From your perspective what are the most worrying elements of the reform?

**PK** Although the Commission has tried to make some efforts to level the playing field in terms of how it allocates direct payment budgets, the budget flexibility between pillars actually allows member states to transfer funds and impacts relative

competitiveness. Similarly, some member states will still use relatively high levels of coupled support for specific sectors. When we in England have gone further and faster than other member states in implementing the previous CAP deal, the prospect of that gap widening through the implementation of this latest deal is what worries me most. That's why 'fairness' is at the heart of our policy on CAP.

**RR** How damaging do you think DEFRA's desire to switch 15% of direct subsidy payments into rural development will really be for farmers?

**PK** Proponents of transfers from pillar 1 to pillar 2 often downplay the extent of the current and future differences these transfers create. They are not trivial. Already a Dutch dairy farmer who continues to receive payments based on historical activity receives a payment per hectare in the order of €500/ha, a Danish dairy farmer €447/ha and even in Germany, where the government has also implemented the area-based approach, an arable farmer in an area such as Schleswig Holstein receives €359/ha. An English farmer currently receives €265/ha and will receive significantly less if Defra transfers up to 15% of the pillar 1 envelope to pillar 2 in the future. Cutting English payments by more than our competitors will not leave us in a better position to compete. It will leave English farmers more vulnerable to the volatility we have seen in markets and weather in recent years and make businesses less resilient compared to European competitors.

**RR** Shouldn't they just become more savvy about accessing rural development funding in addition to direct payments?

**PK** The reality is that the EU budget agreement earlier this year confirms that the UK is facing a significant budget reduction in its pillar 2 rural development allocation. We will retain the unenviable position of having the lowest share of European rural development funds of all member states on a per hectare basis. The debate should not be about making funding or schemes more accessible, but should be focused on re-prioritising rural development spending. Defra should be looking at running measures more focused on making a real difference to the productivity and profitability of agriculture.

**RR** Do farmers do enough to justify the subsidies they receive and do they make their case well enough?

**PK** Part of the reason we have greening is to help justify the CAP budget on environmental grounds. My concern is that this implies that farming is all about what we do for the environment. The reality is that we deliver much more than this. What we do creates jobs and contributes

to economic activity. Farmers have been at the forefront of renewable energy. But above all, we produce food. I've never shied away from where we want to be as an industry – capable of competing without support. But the reality is that we are far from that situation at present. That all makes communicating with consumers ever more critical.

**RR** Will there ever be a time when the majority of the UK's farmers are profitable without subsidies?

**PK** Ministers and the Treasury often speak as though support is a bad thing and we'd be better off without it. There may be a case to be made, but I'm adamant that we shouldn't go it alone. Ending our support while others competing in the same market retain theirs would put us at a huge disadvantage. Second, if we're to get all our income from the market, the market must be made to function better. We saw the problem last year with milk. That's why we've put so much effort into the Grocery Supply Code of Practice and the independent adjudicator, and to getting fairer dairy contracts.

**RR** Apart from CAP reform, and obviously the weather, what are the biggest challenges facing your members at the moment?

**PK** I think the long term opportunities for agriculture are very positive, but there are still some short-term hurdles to clear first. Linked to this is the lack of investment. As farms struggle to manage their finances, we know that machinery spending has fallen. But the bit I'm particularly concerned about is investment in farm infrastructure. If we're going to compete in the long run, we need to be investing in our future productive capacity.

**RR** And the biggest opportunities?

**PK** I think that some of the fall out from the horse meat scandal earlier this year has huge potential to be an opportunity for the industry. Whether it is shoppers questioning where their food comes from or how it's produced, that's undoubtedly a good thing. Perhaps more significantly, more retail businesses are exploring longer term contracts, innovative purchasing agreements, and costs of production models that support an adequate return.

**RR** Does the government do enough to support agriculture? What more could it be doing?

**PK** I'm pleased that there is recognition from government that farmers are food producers and that supply of raw materials has a multiplier effect throughout the agri-food sector. That wasn't always the case within Defra. I would like to see more joined

up thinking across government departments when it comes to releasing the potential of our agri-food industry. I would also like to see the Treasury exploring how fiscal policies impact our industry. I've already highlighted my concerns over investment in farming and I'd like to see Treasury working with Defra and BIS to explore how the tax infrastructure, for instance, could be better used to incentivise on-farm investment.

**RR** How would farmers be affected if the UK ever left the EU?

**PK** This is a simple question, but the answers are always more complex. Outside the EU, there remain many questions. What would UK farm support look like? How would we draw up regulation to replace the issues that Brussels already tackles? What would our access be to EU markets? Outside of the world's largest trading block, would we be able to participate in free trade deals to open up access to third country markets? These are all important questions and this is certainly an area the NFU will be looking at in more detail in the coming months.

**RR** You will be stepping down as NFU President next year. What has been your biggest achievement?

**PK** I think the team at the NFU has during my time helped to turn around the whole perception of farming. No longer is it seen as an old fashioned industry considered bad for the environment and a drag on the rest of the economy. Increasingly there is a recognition that producing food is vitally important and farming is seen as a vital part of the biggest manufacturing sector in the economy.

To read this interview in full and keep track of the latest CAP reform developments, go to: [knighfrankblog.com/ruralbulletin](https://knighfrankblog.com/ruralbulletin)

## PETER KENDALL BIOGRAPHY

After taking a degree in Agricultural Economics at Nottingham University, Peter returned in 1984 to the family's 620ha east Bedfordshire farm, which has evolved over the last 15 years from a very traditional mixed unit to a totally arable business.

He was previously Chairman of NFU Cereals and NFU Deputy President, before being elected President in 2006. He was re-elected for a fourth term of office in February 2012 and also sits on a range of bodies in the UK and Europe, including IGD's Policy Issues Council, the Technology Strategy Board Sustainable Agri-Food IP Steering Group and the Copa-Cogeca Food Chain working party, which he chairs.

# IF IT SMELLS SUSPICIOUS...



## Tom Barrow looks at the government's latest weapon in its war on tax avoidance

GAAR, or the General Anti-Abuse Rule as it is more formally known, came into force on 17 July 2013 and was part of the Coalition's strategy to manage the risk of tax avoidance.

It reinforces parliament's view that taxation is not to be treated as a game whereby taxpayers can indulge in a range of ingenious schemes in order to eliminate or lessen their tax burden and liability.

The target of GAAR is to deter tax payers – and there have been some notably high-profile victims from the world of entertainment – from entering into abusive tax arrangements. It is certainly a shot across the bows of professional advisors considering "creative" tax planning strategies.

GAAR governs any arrangements entered into on or after the date the Finance Bill 2013 was passed. There is a specific provision that enables reference to be made to transactions which were entered into before that date if, but only if, referring to those earlier arrangements would help show that the later arrangements were not abusive.

The legislation introduced with GAAR defines what are, for its purposes, tax arrangements that are considered to be abusive. It will apply to the following taxes:

- Income Tax
- Corporation Tax
- Capital Gains Tax
- Inheritance Tax
- Stamp Duty Land Tax
- Annual Tax on Envelope Dwellings
- Petroleum Revenue Tax

It is important to note that GAAR does not apply to VAT, but there are other provisions that cover VAT avoidance.

The ultimate question is whether the strategy and proposals put forward might be considered to be abusive and

whether it is a question of avoidance versus evasion.

An abusive measure is considered to be where the course of action taken by a tax payer aims to achieve a favourable tax result that parliament did not anticipate when it introduced the tax rules in question.

It has therefore become a question of second guessing parliament – not an easy measure for professional advisors to interpret and decipher. One trustee was quoted as saying 'does the measure satisfy the smell test?'

An independent advisory panel has been set up to give opinions on specific cases and provide guidance on GAAR.

To provide tax payers with some safeguards, a double 'reasonableness' test has also been included. A bit of a tongue twister, this requires that HMRC must show that the arrangements 'cannot be reasonably be regarded as a reasonable course of action'. This sets a high threshold by enquiring whether it would be reasonable to hold the view that the arrangement was a reasonable course of action.

Notwithstanding the introduction of the GAAR, it is likely that the Coalition will continue its crackdown on tax evasion and avoidance with a likely announcement of further targeted anti-avoidance measures.

Ultimately, the question for taxpayers is how these on-going measures will be addressed. GAAR is intended to trap artificial and abusive arrangements, rather than those which are considered to be an integral part of tax planning.

The notional 'smell test' should apply in all cases. If it smells suspicious it probably is – and HMRC's nose is sure to be a lot more sensitive than most of ours.

**Tom Barrow** heads up Knight Frank's Rural Valuations team. For more information on GAAR or other valuation issues please contact: [tom.barrow@knightfrank.com](mailto:tom.barrow@knightfrank.com) or 020 7861 1438

# OUR TEAM

Knight Frank can advise on all aspects of rural property ownership. Its principal service lines and the relevant contacts are listed below. Further details are available on our website at [KnightFrank.co.uk/Rural](http://KnightFrank.co.uk/Rural)

## RURAL CONSULTANCY AND PROPERTY MANAGEMENT



Head of Rural Consultancy

**James Del Mar**  
01488 688 507  
[james.del.mar@knightfrank.com](mailto:james.del.mar@knightfrank.com)



Country House Consultancy

**Angus Harley**  
01488 688 511  
[angus.harley@knightfrank.com](mailto:angus.harley@knightfrank.com)



Estate Management

**Percy Lawson**  
01488 688 513  
[percy.lawson@knightfrank.com](mailto:percy.lawson@knightfrank.com)



Estate Management, Cotswolds

**Paddy Hoare**  
01608 737 057  
[paddy.hoare@knightfrank.com](mailto:paddy.hoare@knightfrank.com)



Rural Property Research

**Andrew Shirley**  
020 7861 5040  
[andrew.shirley@knightfrank.com](mailto:andrew.shirley@knightfrank.com)



Renewables

**Edward Holloway**  
01179 452 638  
[edward.holloway@knightfrank.com](mailto:edward.holloway@knightfrank.com)



Investment Property (East & Home Counties)

**Alastair Paul**  
01279 213170  
[alastair.paul@knightfrank.com](mailto:alastair.paul@knightfrank.com)



Investment Property (West & Wales)

**Edward Dixon**  
01179 452 633  
[edward.dixon@knightfrank.com](mailto:edward.dixon@knightfrank.com)



Marine Property

**Michael Bapty**  
01179 452 635  
[michael.bapty@knightfrank.com](mailto:michael.bapty@knightfrank.com)



Mapping and GIS

**Michael McCullough**  
01488 688 508  
[michael.mccullough@knightfrank.com](mailto:michael.mccullough@knightfrank.com)



Compulsory Purchase & Compensation

**Nicholas Rushton**  
01488 688 522  
[nicholas.rushton@knightfrank.com](mailto:nicholas.rushton@knightfrank.com)



Institutional Management

**Christopher Smith**  
01179 452 630  
[christopher.smith@knightfrank.com](mailto:christopher.smith@knightfrank.com)

## BUILDING CONSULTANCY



Building Consultancy

**James Carter-Brown**  
01488 688 523  
[james.carter-brown@knightfrank.com](mailto:james.carter-brown@knightfrank.com)



Architecture

**Steve Egford**  
01488 688 509  
[steve.egford@knightfrank.com](mailto:steve.egford@knightfrank.com)



England, Wales

**Tom Barrow**  
020 7861 1438  
[tom.barrow@knightfrank.com](mailto:tom.barrow@knightfrank.com)



Scotland

**Michael Ireland**  
0131 222 9625  
[michael.ireland@knightfrank.com](mailto:michael.ireland@knightfrank.com)



South West and Midlands

**Hannah Pike**  
01285 886 690  
[hannah.pike@knightfrank.com](mailto:hannah.pike@knightfrank.com)



The Buying Solution

**Mark Lawson**  
01344 206 070  
[mark.lawson@thebuyingsolution.co.uk](mailto:mark.lawson@thebuyingsolution.co.uk)

## VALUATIONS

## FARMS, ESTATE AND EQUESTRIAN PROPERTY SALES



Estates – England

**Clive Hopkins**  
020 7861 1064  
[clive.hopkins@knightfrank.com](mailto:clive.hopkins@knightfrank.com)



Estates – Scotland

**Ran Morgan**  
0131 222 9600  
[ran.morgan@knightfrank.com](mailto:ran.morgan@knightfrank.com)



Farms – England

**Tom Raynham**  
020 7861 1578  
[tom.raynham@knightfrank.com](mailto:tom.raynham@knightfrank.com)



Farms – Wales, West England

**James Prewett**  
01285 659 771  
[james.prewett@knightfrank.com](mailto:james.prewett@knightfrank.com)



Farms – Scotland, North England

**James Denne**  
01578 722 814  
[james.denne@knightfrank.com](mailto:james.denne@knightfrank.com)



Equestrian Properties

**Rupert Sweeting**  
020 7861 1078  
[rupert.sweeting@knightfrank.com](mailto:rupert.sweeting@knightfrank.com)

## RENEWABLE ENERGY

## FARMS & ESTATE BUYING



WHETHER YOU NEED A DETAILED LAND USE MAP



OR WOULD LIKE TO CHECK  
THE POSITION OF YOUR BOUNDARIES



KNIGHT FRANK'S MAPPING TEAM  
IS PERFECTLY PLACED TO HELP

## KNIGHT FRANK KNOWS MAPPING

Michael McCullough, Head of Knight Frank's Mapping team, has created bespoke plans for many of the UK's leading farms and estates.

To discover how Michael and his team can help you make the most of your property and protect your assets, please contact

**+44 20 8166 7514 or visit  
KnightFrank.co.uk**

