

WIMBLEDON SALES MARKET INSIGHT 2017

FIGURE 1
Property prices in Wimbledon and surrounding area

Achieved prices, 12 months to February 2017

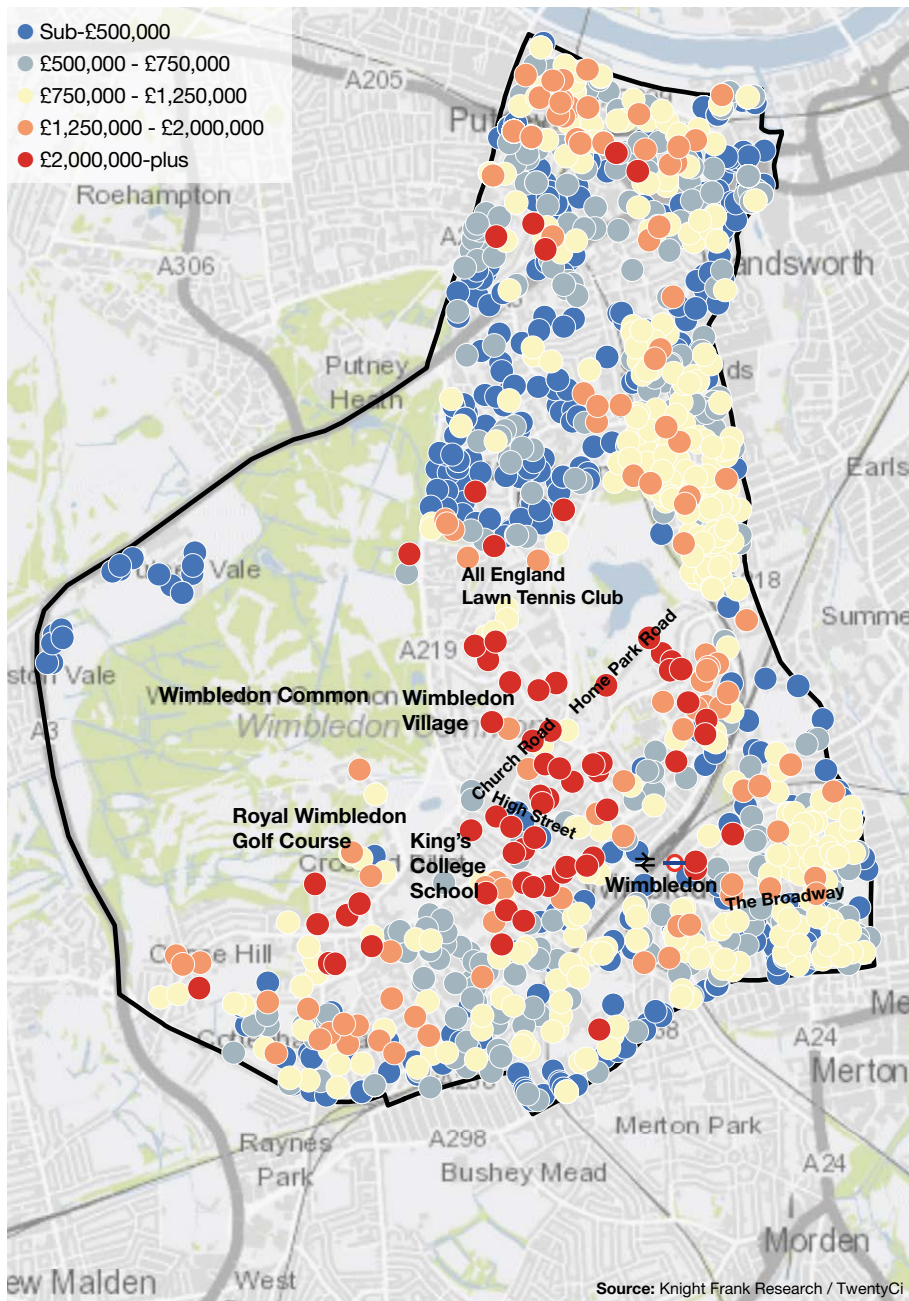


FIGURE 2
Wimbledon fact sheet

Population: 98,721

-2% Price change in the year to May 2017
 12.8% Price change in the five years to May 2017

Average price in the year to February 2017

SW19	£623,179
SW20	£604,419

Maximum price in the year to February 2017

SW19	£6.5 million
SW20	£3.35 million

Source: Knight Frank Research / Land Registry

BLUE PLAQUES

Robert Graves Writer
 Josephine Butler Social Reformer

STOCK BY PROPERTY TYPE

£500,000-plus sales, two years to February 2017

Flat	47%
Terraced	35%
Semi-detached	11%
Detached	7%

Source: Knight Frank Research / Land Registry

AGE OF HOUSING STOCK

Pre-1900	23%
1900-1939	34%
1945-1972	19%
1973-1999	13%
2000-present	11%

Source: Knight Frank Research

WIMBLEDON SALES MARKET INSIGHT 2017

FIGURE 3 Price growth versus area average January 2012 to February 2017

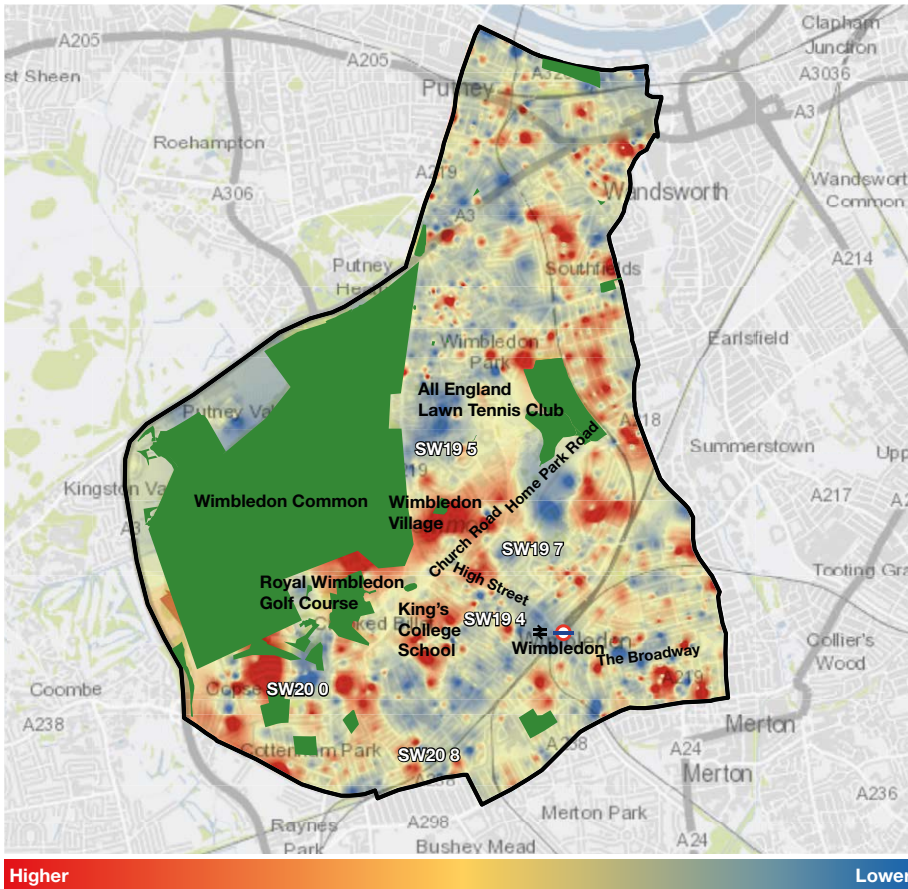


FIGURE 4 Average sold price and sales volumes by neighbourhood

Note: Variations in average sold prices between different time periods do not necessarily indicate price growth

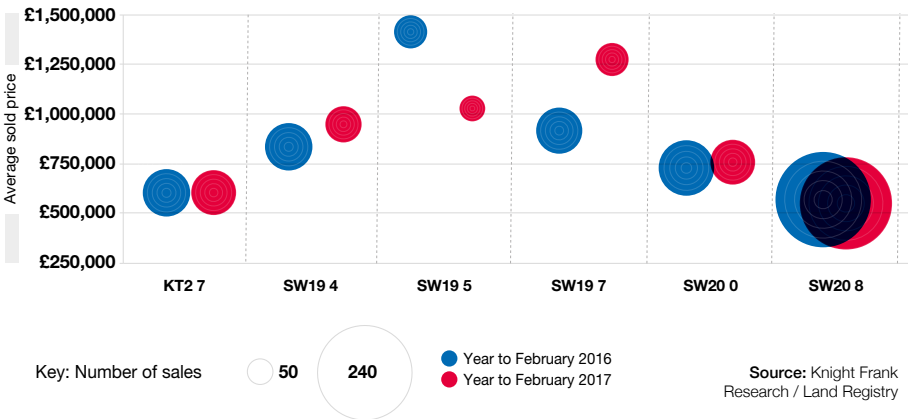
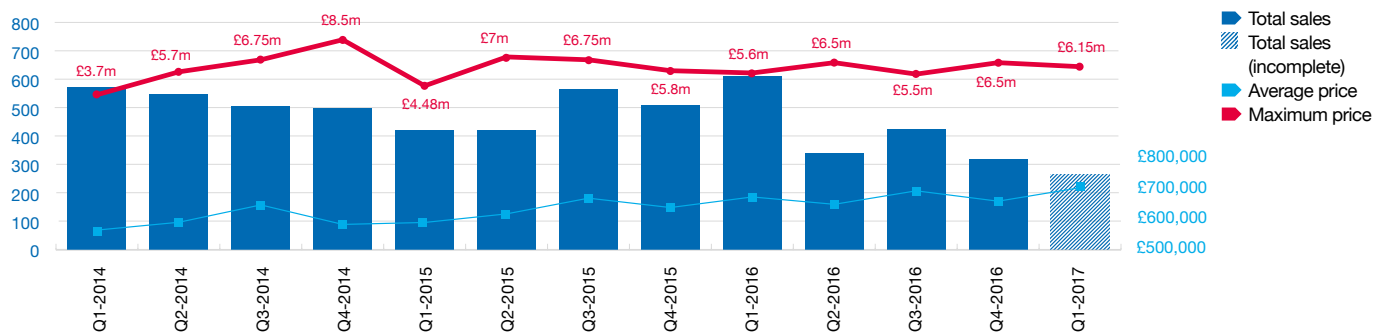


FIGURE 5 Transaction volumes and pricing data



Source: Knight Frank Research / Land Registry

LONDON RESIDENTIAL



Dominic Pasqua
Wimbledon Office Head
+44 20 8022 0362

dominic.pasqua@knightfrank.com



Ruth Barr
Wimbledon Head of Lettings
+44 20 8022 0277

ruth.barr@knightfrank.com

RESIDENTIAL RESEARCH



Tom Bill
Head of London
Residential Research
+44 20 7861 1492

tom.bill@knightfrank.com

PRESS OFFICE



Harry Turner
+44 20 3861 6974

harry.turner@knightfrank.com



Important Notice

© Knight Frank LLP 2017 - This report is published for general information only and not to be relied upon in any way. Although high standards have been used in the preparation of the information, analysis, views and projections presented in this report, no responsibility or liability whatsoever can be accepted by Knight Frank LLP for any loss or damage resultant from any use of, reliance on or reference to the contents of this document. As a general report, this material does not necessarily represent the view of Knight Frank LLP in relation to particular properties or projects. Reproduction of this report in whole or in part is not allowed without prior written approval of Knight Frank LLP to the form and content within which it appears. Knight Frank LLP is a limited liability partnership registered in England with registered number OC305934. Our registered office is 55 Baker Street, London, W1U 8AN, where you may look at a list of members' names.