

Abell & Cleland

Westminster SW1

The Location Guide

Berkeley
Designed for life

Abell&Cleland

The area between Millbank and the Houses of Parliament in Westminster is an important cultural and political destination, book-ended by Tate Britain and Westminster Abbey. It is also a thriving local neighbourhood, with all the shopping, leisure and entertainment amenities essential for exclusive central London living.



Trafalgar Square looking towards Houses of Parliament

Content

Superior Service	04 - 09
Art & Museums	10 - 13
Theatres	14 - 17
Fashion & Tailoring	18 - 23
Bars & Restaurants	24 - 27
Hotels	28 - 31
Places of Interest	32 - 35
Art & Antiques	36 - 39
Home Furnishing	40 - 43
Education	44 - 47
Local Amenities	48 - 53
Location Map	54 - 55

Superior Service

As a service at this exclusive new address, a 24-hour concierge will maintain security and oversee residents' and visitors' every need including secure car parking* facilities, business suite and on-site gymnasium, pool and sauna facilities.



Excellence

Concierge

The opulently furnished, light filled lobby of Abell House creates a luxurious and glamorous yet welcoming space in which to greet waiting guests. The stylish design of the lobby continues through to the apartments. A dedicated 24-hour concierge service will attend to residents and their visitors.



Leisure & Business Facilities

A luxury leisure facility is available to all residents of Abell and Cleland. Approaching via a grand staircase from the Abell House entrance lobby and welcomed at the reception, residents can take advantage of the leisure suite comprising a full featured gymnasium, pool, sauna and changing facilities. Residents will also be able to conveniently undertake international business by using a fully equipped business suite at their disposal day and night, situated in Cleland House.



Art & Museums

There are many London museums to choose from, including the British Museum, the Science Museum and the Natural History Museum. Whether you love Old Masters or modern art, contemporary sculpture or Impressionist paintings, London has an art gallery to suit.

Eclectic Culture



British Museum, Tate Britain, National Gallery and Royal Academy of Arts.

Art & Museums

1 Tate Britain

Millbank
SW1P 4RG
+44 (0) 20 7887 8888
www.tate.org.uk

From romantic Pre-Raphaelite paintings to landscapes by Turner and Francis Bacon's distorted nudes, Tate Britain is home to one of the largest collections of British art in the world.

2 British Museum

British Museum
Great Russell Street
WC1B 3DG
+44 (0) 20 7323 8000
www.britishmuseum.org

Founded in 1753, the British Museum's remarkable collection spans over two million years of human history. Visitors enjoy a unique comparison of the treasures of world cultures under one roof, centred around the magnificent Great Court.

3 Churchill War Rooms

Clive Steps
King Charles Street
SW1A 2AQ
+44 (0) 20 7930 6961
cwr.iwm.org.uk

Deep beneath the bustle of London lie the original Cabinet War Rooms - today part of the Churchill War Rooms - which sheltered the people at the heart of Britain's wartime government during the Blitz.

4 Florence Nightingale Museum

2 Lambeth Palace Road
SE1 7EW
+44 (0) 20 7620 0374
www.florence-nightingale.co.uk

Florence Nightingale is recognised as the founder of modern nursing. Telling the story of the "lady with the lamp" from her Victorian childhood to her experiences in the Crimean, through to her years as an ardent campaigner for health reform.

5 The Hayward Gallery

Southbank Centre
Belvedere Road
SE1 8XX
+44 (0) 20 7960 4200
www.southbankcentre.co.uk/venues/hayward-gallery

The Hayward Gallery opened on 9 July 1968. Its massing and extensive use of exposed concrete construction are typical of Brutalist architecture. The Hayward hosts major temporary modern or contemporary exhibitions.

6 London Film Museum

Riverside Building
County Hall
SE1 7PB
+44 (0) 20 7202 7040
www.londonfilmmuseum.com

The London Film Museum is the only film museum of its kind in Great Britain, supporting the film industry and the talent within it.

7 London Transport Museum

39 Wellington Street
Covent Garden
WC2E 7BB
+44 (0) 20 7565 7292
www.ltmuseum.co.uk

Lively exhibitions explore the powerful link between transport and the growth of modern London, its culture and society since 1800; full of light, colour and movement, the Museum explores how transport has given the City its unique cultural identity.

8 National Gallery

Trafalgar Square
WC2N 5DN
+44 (0) 20 7747 2885
www.nationalgallery.org.uk

The National Gallery is a vast space, filled with Western European paintings from the 13th to 19th centuries. In this famous art gallery you can find works by masters such as Van Gogh, da Vinci, Botticelli, Constable, Renoir, Titian and Stubbs.

9 National Portrait Gallery

St Martin's Place
WC2H 0HE
+44 (0) 20 7306 0055
www.npg.org.uk

The National Portrait Gallery is home to the world's largest collection of portraits, spanning from the Tudor period to the present day. The collection includes Shakespeare, Kings and Queens and contemporary personalities, also a photographic collection.

10 Royal Academy of Arts

Burlington House
W1J 0BD
+44 (0) 20 7300 8000
www.royalacademy.org.uk

Founded in 1768, the Royal Academy of Arts is one of London's major art galleries and home to an regularly changing programme of exhibitions. Highlights include Queen Victoria's paintbox and the only Michelangelo sculpture in the country.

11 Saatchi Gallery

Duke of York's HQ
King's Road
SW3 4RY
+44 (0) 20 7730 8135
www.saatchi-gallery.co.uk

An innovative forum for contemporary art, presenting work by largely unseen young artists or by established international artists.

12 Sir John Soane's Museum

13 Lincoln's Inn Fields
WC2A 3BP
+44 (0) 20 7405 2107
www.soane.org

Former residence of Sir John Soane, architect of the Bank of England. Over 20,000 architectural drawings, antiquities and works by Turner, Canaletto and Piranesi. Two sets of paintings by William Hogarth and the Egyptian Sarcophagus of Seti I.

Theatres

London offers some of the world's best theatre, musicals and opera, many within walking distance from Abell & Cleland. Whether independent fringe theatre or high profile productions, there is always something new to see.

Theatreland



Her Majesty's Theatre

Theatres

1 Adelphi Theatre

409 – 412 Strand
WC2R 0NS
+44 (0) 20 7492 9930
www.adelphi-theatre.com

The Adelphi Theatre was originally founded in 1806 as the Sans Pareil by merchant John Scott and his daughter Jane. Many of Charles Dickens' stories were adapted for the stage here including Nicholas Nickleby.

2 Aldwych Theatre

Aldwych
WC2B 4DF
+44 (0) 20 7836 5537
www.aldwychtheatre.com

The Aldwych Theatre is a West End theatre, located on Aldwych in the City of Westminster. The theatre was listed Grade II on 20 July 1971 and has a seating capacity of 1,200 on three levels.

3 Cambridge Theatre

32 – 34 Earlham Street
WC2H 9HU
+44 (0) 844 412 4652
www.cambridgetheatre.com

The Cambridge Theatre is a West End theatre, on the corner of Earlham Street facing Seven Dials built in 1929-30.

4 Criterion Theatre

2 Jermyn Street
SW1Y 4XA
+44 (0) 844 847 1778
www.criterion-theatre.co.uk

The Criterion Theatre is a West End theatre situated on Piccadilly Circus in the City of Westminster, and is a Grade II listed building.

5 Duke of York's Theatre

St Martin's Lane
WC2N 4BG
+44 (0) 844 871 7627
www.royalcourttheatre.com

Built for Frank Wyatt and his wife, Violet Melnotte, who retained ownership of the theatre, until her death in 1935. It opened on 10 September 1892 as the Trafalgar Square Theatre, with Wedding Eve.

6 Garrick Theatre

Charing Cross Road
WC2H 0HH
+44 (0) 844 482 9673
www.nimaxtheatres.com

The Garrick Theatre is a West End theatre, located on Charing Cross Road, in the City of Westminster. The theatre is named after David Garrick, considered the most influential Shakespearean actor.

7 Gielgud Theatre

35 Shaftesbury Avenue
W1D 6AR
+44 (0) 844 482 5130
www.delfontmackintosh.co.uk

The Gielgud Theatre is a West End theatre, located on Shaftesbury Avenue in the City of Westminster, London, at the corner of Rupert Street. The house currently has 889 seats on three levels.

8 London Coliseum / English National Opera

33 – 35 St Martin's Lane
WC2N 4ES
+44 (0) 20 7845 9300
www.eno.org

The ENO stages more new productions and contemporary opera than any other UK opera company. They have a world class reputation for distinctive and highly theatrical English language performances.

9 Noel Coward Theatre

St Martins Lane
WC2N 4AU
+44 (0) 844 482 5140
www.delfontmackintosh.co.uk

The Noël Coward Theatre, formerly known as the Albery Theatre, is a West End theatre on St. Martin's Lane in the City of Westminster. The theatre seats 872 patrons on four levels.

10 The Playhouse Theatre

Northumberland Ave
WC2N 5DE
+44 (0) 20 7492 9930
www.playhouse-theatre.com

The Playhouse Theatre is located in the heart of London, near the famous Trafalgar Square with its towering bronze lions guarding Nelson's Column and an array of London hotels.

11 Royal Opera House

Covent Garden
WC2E 9DD
+44 (0) 20 7641 6000
www.roh.org.uk

The Royal Opera, under the direction of Antonio Pappano, is one of the world's leading opera companies. Based in the iconic Covent Garden theatre, it is renowned for its outstanding performances of traditional opera.

12 Theatre Royal Haymarket

Haymarket
SW1Y 4HT
+44 (0) 0845 481 1870
www.trh.co.uk

Historically and architecturally one of the most significant theatres in Britain, the last four years have seen considerable change for the Theatre Royal Haymarket, with the continued expansion of the Masterclass Programme.

13 Wyndham's Theatre

Charing Cross Road
WC2H 0DA
+44 (0) 844 482 5120
www.delfontmackintosh.co.uk

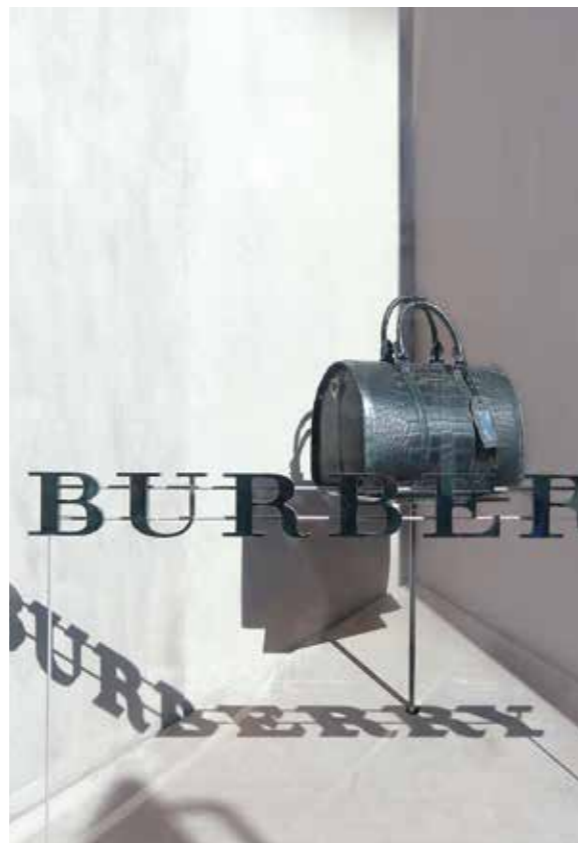
Located on Charing Cross Road, in the City of Westminster, it was designed by W.G.R. Sprague about 1898, the architect of six other London theatres between then and 1916.

Fashion & Tailoring

In a leisurely half-hour radius of Abell & Cleland the style-conscious man and woman can benefit from the best in sartorial services, whether their taste runs to ready-to-wear or bespoke tailoring.



London Style



Fashion & Tailoring

1 Alfred Dunhill

Bourdon House
2 Davies Street
W1K 3DJ
+44 (0) 845 458 0779
www.dunhill.com

Alfred Dunhill is a gentlemen's outfitter retailing suits, aftershave and watches. They also provide a spa, cellar bar and a 12 seater screening room.

2 Basia Zarzycka

52 Sloane Square
Belgravia
SW1W 8AX
+44 (0) 20 7351 7276
www.basia-zarzycka.com

Designs for clients ranging from foreign royalty to international pop stars and some of the biggest names in Hollywood - bespoke, innovative designs from conception through to completion to the highest standard of workmanship.

3 Bates Hats

73 Jermyn Street
SW1Y 6NP
+44 (0) 20 7734 2722
www.bates-hats.com

Edward Bates Ltd have supplied stylish hats and caps to discerning gentlemen from their enchanting Jermyn Street shop in London since the turn of the century.

4 Benson & Clegg

9 Piccadilly Arcade
SW1Y 6NH
+44 (0) 20 7491 1454
www.bensonandclegg.com

Benson & Clegg has been part of London's bespoke tailoring heritage for over seventy five years, as well as leading in it's ever expanding range of ties, cufflinks, buttons and badges.

5 Burberry

2 Brompton Road
SW1X 7QN
+44 (0) 20 3402 1600
www.uk.burberry.com

Burberry is a British luxury fashion house, manufacturing clothing, fragrance and fashion accessories. It's known for its distinctive tartan pattern and most famous for its iconic trench coat, which was invented by founder Thomas Burberry.

6 Church's

108 - 110 Jermyn Street
SW1Y 6EE
+44 (0) 20 7930 8210
www.church-footwear.com

Church's was founded in 1873 by Thomas Church and his three sons Alfred, William and Thomas Jr. All of Church's men's welted shoes are manufactured in Northampton: all the production is hand-made and performed inside the factory by specialised craftsmen.

7 Duchamp

67 - 68 Jermyn Street
SW1Y 6NY
+44 (0) 20 7839 8430
www.duchamplondon.com

Duchamp traces its origins to France and the chance discovery by the founder of a cache of 10,000 vintage cufflinks in a Paris flea market back in 1989.

8 Edward Green

75 Jermyn Street
SW1Y 6NP
+44 (0) 20 7839 0202
www.edwardgreen.com

Established in 1890, Edward Green has become famous by producing some of the finest Goodyear welted shoes. They make hand-crafted shoes for gentlemen from their small factory based in Northampton.

9 Harrods

87 - 135 Brompton Road
Knightsbridge
SW1X 7XL
+44 (0) 20 7730 1234
www.harrods.com

Harrods is an upmarket department store. The store occupies a 5-acre (20,000 m²) site and has over one million square feet (90,000 m²) of selling space in over 330 departments.

10 Harvey Nichols

109 - 125 Knightsbridge
SW1X 7RJ
+44 (0) 20 7235 5000
www.harveynichols.com

Harvey Nichols, founded in 1831, is an upmarket department store chain. Founded in 1831 as a linen shop, it sells many international brands of clothing for women and men, fashion accessories, beauty products, wine and food.

11 Harvie & Hudson

77 Jermyn Street
St James's
SW1Y 6NP
+44 (0) 20 7930 3949
www.harvieandhudson.com

As Jermyn Street's sole remaining family-owned shirtmaker, Harvie and Hudson produce the highest quality in shirt and tie-making on offer.

12 Hilditch & Key

37 Jermyn Street
SW1 6DT
+44 (0) 20 7734 4707
www.hilditchandkey.co.uk

The Hilditch & Key shirt was recently described by the Sunday Telegraph as "The best shirt in Jermyn Street (and hence the world)...".



Fashion & Tailoring

13 Jasper Littman

9 Savile Row
Mayfair
W1S 3PF
+44 (0) 8456 121 220
www.jasperlittman.co.uk

Litman specialises in Savile Row-style bespoke and semi bespoke suits, made in England from the finest English fabrics. Each suit is measured, fitted and delivered by a team of visiting tailors.

14 John Lobb's & Co.

9 St James's Street
SW1A 1EF
+44 (0) 20 7930 3664
www.johnlobbltd.co.uk

Bootmaker keeping well-heeled customers well-heeled since 1849: tailor-made boots and shoes of the very highest quality.

15 Lock & Co.

6 St James's Street
SW1A 1EF
+44 (0) 20 7930 8874
www.lockhatters.co.uk

The gentleman's hatter of choice since 1676 – and still family owned, providing quality headwear of a standard still expected in the members' enclosure at Ascot.

16 Philip Treacy

69 Elizabeth Street
SW1W 9PJ
+44 (0) 20 7730 3992
www.philiptreacy.co.uk

High class millinery from Irish designer Philip Treacy: he opened this elegant shop in 1994 to showcase his famously iconic pieces that include hats fashioned into boats and lobsters and worn by the likes of Erin O'Connor and Grace Jones.

17 Rachel Trevor Morgan Millinery

18 Crown Passage
King Street, St James's
SW1Y 6PP
+44 (0) 20 7839 8927
www.racheltrevormorgan.com

Rachel Trevor-Morgan millinery provides the perfect hat or headpiece – whatever the occasion. Rachel was given the accolade of being appointed to design hats for H.M. The Queen, who has worn Rachel's hats on many high profile occasions.

18 Redwood & Feller

89 Rochester Row
Westminster
SW1P 1UJ
+44 (0) 20 7828 9519
www.redwoodandfeller.co.uk

Redwood & Feller Ltd are one of London's finest bespoke tailors and established institutions, in a city renowned for sartorial splendour. They are well known for creating the finest tailor made suits.

19 Selfridges

400 Oxford Street
W1A 1AB
0800 123 400
www.selfridges.com

Selfridges is a high end department store. It was founded by Harry Gordon Selfridge. The flagship store in London's Oxford Street is the second largest shop in the UK (after Harrods) and opened 15 March 1909.

20 Stewart Parvin

14 Motcomb Street
SW1X 8LB
+44 (0) 20 7838 0890
www.stewartparvin.com

Wedding dresses and custom-made couture outfits: Parvin's creations have been a favourite of the Queen – and his dresses were included in an exhibition, 'Dress for The Occasion', at Buckingham Palace.

21 Thomas Pink

85 Jermyn Street
SW1Y 6JD
+44 (0) 20 7930 6364
www.thomaspink.com

Mr Pink was an 18th century London tailor who designed the iconic hunting coat worn by Masters of Foxhounds, whippers-in, huntsmen and other hunt staff. Today Thomas Pink makes shirts that keep this British heritage.

22 William Hunt

41 Savile Row
W1S 3QQ
020 7439 1921
www.williamhunt.co.uk

Fiercely masculine with splashes of colour, William Hunt's designs are noted for their ability to make the wearer feel seven pounds lighter and two inches taller.

Bars & Restaurants

Westminster is the legislative heart of the UK, with a long-standing gourmet tradition evolved to meet the demands of the nation's movers and shakers.

Few London areas match the culinary standards set in Westminster.

Culinary Delight

Bars & Restaurants

1 Altitude 360

29th Floor Millbank Tower
21 – 24 Millbank
SW1P 4
+44 (0)845 500 2929
www.altitudelondon.com

An uninterrupted 360° view of London from the tallest riverside building on the Thames - Grade II listed building includes restaurants, bars, a cinema and a private members club.

2 Bistro 51

Crowne Plaza
54 Buckingham Gate
SW1E 6AS
+44 (0) 20 7963 8325
www.london.crowneplaza.com

Housed in the Crowne Plaza along with Michelin-starred Quilon and the Bank Westminster brasserie, Bistro 51 offers a European menu with British Asian extras: on sunny days the hotel's pretty courtyard is a great asset in busy Westminster.

3 The Cinnamon Club

The Old Westminster Library
30 Great Smith Street
SW1P 3BU
+44 (0) 20 7222 2555
www.cinnamonclub.com

Grand cuisine in the magnificent setting of Old Westminster Library. One of the most stunning dining rooms in the capital and an imaginative, constantly evolving take on Indian cuisine.

4 Gordons Wine Bar

47 Villiers Street
WC2N 6NE
+44 (0) 20 7930 1408
www.gordonswinebar.com

Gordons wine bar is thought to be the oldest wine bar in London and has been established in its present form since 1890. The bar is loved by old and young alike due to the totally unique atmosphere in which time seems to have stood still.

5 Hélène Darroze at The Connaught

The Connaught
Carlos Place, Mayfair
W1K 2AL
+44 (0) 20 7499 7070
www.the-connaught.co.uk/
london_restaurant

Hélène Darroze, one of France's most distinguished chefs, is taking the gastronomic experience at the Connaught into a new and exciting phase. Inspired by authentic regional and seasonal flavours, Hélène's cuisine has its roots in her native Landes region of south west France.

6 Hibiscus

29 Maddox Street
W1S 2PA
+44 (0) 20 7629 2999
www.hibiscusrestaurant.co.uk

Claude opened Hibiscus restaurant in May 2000 and won his first Michelin star in 2001 and subsequently his second three years later.

7 Inn The Park

St James's Park
SW1A 2BJ
+44 (0) 20 7451 9999
www.peytonandbyrne.co.uk/
/inn-the-park

Nestled among the plants and ponds of St James's Park, Inn The Park is a wonderfully innovative café restaurant that blends seamlessly into its surroundings to offer a natural oasis right in the heart of London.

8 Le Gavroche

43 Upper Brook Street
W1K 7QR
+44 (0) 20 7408 0881
www.le-gavroche.co.uk

Le Gavroche was opened in 1967 by Michel and Albert Roux. The restaurant offers classical French food, although some dishes come with something of a modern twist. In 1982 it became the first restaurant in the UK to be awarded three Michelin stars.

9 Marcus Wareing at the Berkeley

Wilton Place
Knightsbridge
SW1X 7RL
+44 (0) 20 7235 1200
www.the-berkeley.co.uk/
marcus_wareing

Perfectly suited to Knightsbridge, Marcus Wareing at The Berkeley is the place for sophisticated fine dining in London. Combining style and perfect service, it provides a perfect showcase for the talents of one of Britain's most talented chefs.

10 Osteria dell'Angolo

47 Marsham Street
SW1P 3DR
+44 (0) 20 3268 1077
www.osteriadellangolo.co.uk

Contemporary Italian cuisine, regional dishes and classics with a Mediterranean touch.

11 Quilon

41 Buckingham Gate
SW1E 6AF
+44 (0) 20 7821 1899
www.quilon.co.uk

Michelin-starred restaurant specialising in south-west coastal Indian cuisine.

12 Quirinale

1 Great Peter Street
SW1P 3LL
+44 (0) 20 7222 7080

Outstanding Italian food in a light and airy modern space.

13 Roux at Parliament Square

11 Great George Street
SW1P 3AD
+44 (0) 20 7334 3737
rouxatparliamentssquare.co.uk

Michelin-starred chef Michel Roux Jr has developed a relaxed and personal gastronomic setting, using modern European cooking techniques and sourcing seasonal produce of the highest quality to create a unique menu in a striking setting.



Hotels

The finest levels of service, home-from-home welcome and above all, location – the range of hotels near Abell & Cleland offers a true capital experience for visitors and business people.

Luxury Hotels



Rubens at the Palace

Hotels

1 Corinthia Hotel ★★★★★

Whitehall Place
SW1A 2BD
+44 (0) 20 7930 8181
www.corinthia.com

Perfectly positioned just moments from Trafalgar Square, Westminster and Covent Garden, yet close to Mayfair and The City's Square Mile, Corinthia provides state-of-the-art facilities in an eminent building dating back to 1885.

2 Corona ★★★★★

85 – 89 Belgrave Road
SW1V 2BQ
+44 (0) 20 7828 9279
www.coronahotel.co.uk

Modern rooms in a range of sizes in a good location for Victoria and Pimlico.

3 Crowne Plaza

St James Hotel ★★★★★

45 – 51 Buckingham Gate
SW1E 6AF
+44 (0) 20 7834 6655
www.london.crowneplaza.com

In the best possible location for Buckingham Palace and the Horseguard's Parade, with a lovely courtyard garden and the longest bar in London.

4 Doubletree

by Hilton London ★★★★★

30 John Islip Street
SW1P 4QP
+44 (0) 20 7630 1000
www.doubletree1.hilton.com

Comfortable, modern and well-equipped with an excellent location and first class restaurant close to London Eye, Westminster, Downing Street and Tate Britain.

5 Dukes Hotel ★★★★★

35 St. James's Place
SW1A 1NY
+44 (0) 20 7491 4840
www.dukeshotel.com

With a discreet location off Piccadilly, in the heart of Mayfair, Dukes has been fabulously renovated and is excellently located for Regent Street, Green Park, theatres, and exquisite shops.

6 Park Plaza

Westminster Bridge ★★★★★

200 Westminster Bridge Road
SE1 7UT
+44 (0) 844 415 6780
www.parkplaza.com

New, ultra-modern hotel on London's South Bank, within walking distance of the city's key attractions. 15-metre swimming pool and six separate dining and entertainment options.

7 Rochester Grange ★★★★★

69 Vincent Square
SW1P 2PA
+44 (0) 20 7828 6611
www.grangehotels.com/
RochesterLondon

Stylish, comfortable base in quiet surroundings yet close to Victoria Station.

8 Rubens at The Palace ★★★★★

Buckingham Palace Road
SW1 OPS
+44 (0) 20 7834 6600
www.rubenshotel.com

At the heart of London's biggest tourist attractions, opposite Buckingham Palace and a short walk from Westminster Abbey. Wins strong and consistent praise from customers for service, décor, comfort and amenities.

9 The Stafford London by Kempinski ★★★★★

16 – 18 Saint James's Place
SW1A 1NJ
+44 (0) 20 7493 0111
www.kempinski.com/london

Just off Piccadilly and close to Green Park, The Stafford London by Kempinski is elegant, central, peaceful and charming. Alive with English character, it holds 5 AA Red Stars for its excellence.

10 Thistle Westminster ★★★★★

49 Buckingham Palace Road
SW1W 0QT
+44 (0) 871 376 9039
www.thistle.com/Westminster

Comfortable standard, executive, deluxe and family rooms, all ensuite.

11 Victoria Park Plaza ★★★★★

239 – 251 Vauxhall Bridge Road
SW1V 1EQ
+44 (0) 20 7769 9999
www.parkplaza.com/Victoria

4 star hotel with good access to Victoria Station, links to the rest of the city and an award winning restaurant.

12 51 Buckingham Gate Taj Suites & Residences ★★★★★

Buckingham Gate
City of Westminster
SW1E 6AF
+44 (0) 20 7769 7766
www.51-buckinghamgate.com

In the heart of Westminster, close to Buckingham Palace, these 5 AA Red Star luxurious suites are served by 3 acclaimed restaurants and the award-winning Spa at 51.

*Hotel star rating

Places of Interest

London benefits from a wide range of fascinating and exciting places of interest to visit. From historical buildings such as Westminster Abbey to Covent Garden market, there's always something to see.

Local Attractions





St James's Park looking towards Houses of Parliament

Places of Interest

1 Bessborough Gardens

Vauxhall Bridge Road
SW1V

Bessborough Gardens was originally the site of Holy Trinity Church designed by J. Pearson in 1849-52. Bessborough Gardens is named after Lord Bessborough (John William Ponsonby, The 4th Earl of Bessborough, 1781–1847), a British politician who was Home Secretary in 1834.

2 Buckingham Palace

SW1A 1AA
+44 (0) 20 7766 7300
www.royal.gov.uk

Built in 1837, Buckingham Palace has been the official London residence of Britain's sovereigns since that time, and today is the administrative headquarters of the Monarch.

3 Green Park

The St James's Park Office
The Storeyard
Horse Guards Road
St James's Park
+44 (0)300 061 2350
SW1A 2BJ
www.royalparcs.org.uk

Although situated so close to St James's Park, The Green Park is quite different in character. It is more peaceful with mature trees and grassland and is surrounded by Constitution Hill, Piccadilly and the Broad Walk.

4 Horse Guards

Whitehall
SW1A 2AX
+44 (0) 20 7414 2479
www.householdcavalrymuseum.co.uk

Horse Guards is a large grade I listed building in the Palladian style. Recognised as the centre of Government, Whitehall is lined with government departments and ministries. The first Horse Guards building was built on the site of the former tiltyard of Westminster Palace in 1664.

5 Houses of Parliament and Big Ben

House of Commons
Westminster
SW1A 0AA
+44 (0) 20 7219 3000
www.parliament.uk

The Houses of Parliament and the clock tower, commonly called Big Ben, are among London's most iconic landmarks. Technically, Big Ben is the massive bell inside the clock tower, which weighs more than 13 tons (13,760 kg).

6 Hyde Park

The Park Office
Rangers Lodge
Hyde Park
W2 2UH
+44 (0)300 061 2000
www.royalparcs.org.uk

When King Henry VIII and his court were thundering across Hyde Park in 1536 in pursuit of deer and wild boar, it would have been difficult to visualise that years later the noble art of tai chi would be peacefully performed among the trees. Home of the Serpentine Lake.

7 St James's Park

The St James's Park Office
The Storeyard
Horse Guards Road
SW1A 2BJ
+44 (0)300 061 2350
www.royalparcs.org.uk

St James's Park is London's oldest Royal Park and is surrounded by three palaces. The Park covers 23 hectares and has a lake with ducks, geese and pelicans.

8 St Johns Garden

Horseferry Road, SW1

The site is the former graveyard of St. Johns Church, Smith Square. The garden as it appears today was re-landscaped in 2001 as part of the development of the old Westminster Hospital site. As part of the works a new fountain was installed to replace the then derelict one that was there previously.

9 Victoria Embankment Gardens

Victoria Embankment
The gardens are located along the Victoria Embankment next to the Embankment Underground station. Victoria Embankment Gardens won its first Green Flag in 2002 and has retained it consistently winning each year.

10 Vincent Square

City of Westminster
SW1
Vincent Square is a large grass-covered square in Westminster covering 13 acres. It provides playing fields for Westminster School, that privately owns it.

11 Westminster Abbey Precincts and the College Garden

Westminster Abbey
SW1P 3PA
Beside Westminster Abbey, within the Abbey precincts, it's possible to visit the College Garden on several days of the week - an oasis of calm at the heart of the City.

12 Westminster Abbey

The Chapter Office
20 Dean's Yard
Westminster Abbey
SW1P 3PA
+44 (0) 20 7222 5152
www.westminster-abbey.org

Westminster Abbey is steeped in more than a thousand years of history. Benedictine monks first came to the site in the middle of the tenth century, establishing a tradition of daily worship which continues to this day.

Art & Antiques

Shops specialising in fine art, antiques and objets de vertu are never far away from the eager searcher in the prosperous byways of Westminster.

Collectibles



Art & Antiques

1 Appley Hoare Antiques

22 Pimlico Road
SW1W 8LJ
+44 (0) 20 7730 7070
www.appleyhoare.com

A fine line in chic French antiques, specialising in zinc and arras garden furniture.

2 Arthur Brett

103 Pimlico Road
SW1W 8PH
+44 (0) 20 7730 7304
www.arthurbrett.com

Specialist in high-quality nineteenth century furniture.

3 Alon Zakaim Fine Art

30 Cork Street
Mayfair
W1S 3NG
+44 (0) 20 7287 7750
www.alonzakaim.com

This is where Peggy Guggenheim opened her first gallery in London, continuing the art dealing tradition she started. The Cork Street gallery deals in nineteenth century, Impressionist, Post-Impressionist, Modern and Contemporary art, focusing largely on oil paintings and sculpture.

4 Elizabeth Street Antiques

35 Elizabeth Street
SW1W 9RP
+44 (0) 20 7730 6777
www.elizabethstreetgallery.com

Specialist in the restoration and repair of a wide range of antiques.

5 Other Criteria

36 New Bond Street
Mayfair
W1S 2RP
+44 (0) 20 7629 5800
www.othercriteria.com

Arts-based publishing company co-founded by Damien Hirst – look out for Damien Hirst wallpaper, David Bailey books and Banksy collaborating with Sarah Lucas.

6 Pendulum of Mayfair

51 Maddox Street
Mayfair
W1S 2PH
+44 (0) 20 7629 6606
www.pendulumofmayfair.co.uk

Family shop specialising in hand-made pendulum clocks of distinction. It does all the Royal Family's clock work and carries out restorations for Asprey and Gerrard.

7 Sotheby's

34 – 35 New Bond Street
W1A 2AA
+44 (0) 20 7293 5000
www.sothebys.com

The world's oldest art auction house, founded 1774. A Degas pastel of a ballet dancer set the world record here for an artist at auction with a price of £17,601,500 (\$27,930,020) – though over 80 per cent of the lots sell for under £3000.

Home Furnishings

Within a short distance of Abell & Cleland there are some of London's most well-regarded home furnishing shops that will give plenty of inspiration for your apartment.

Interior Style

1 Alessi

22 Brook Street
Mayfair
W1K 5DF
+44 (0) 20 7518 9091
www.alessi.co.uk

Over the years Alessi designers have included Norman Foster, Aldo Rossi and Marc Newson, and items from the Alessi range can be found in shops all over the UK. The Brook Street flagship store harbours the most comprehensive selection.

2 Alma Home

8 Vigo Street
Mayfair
W1S 3HJ
+44 (0) 20 7439 0925
www.almahome.co.uk

Leather, suede and wood for the home.

3 Armani/Casa

113 New Bond Street
Mayfair
W1S 1DP
+44 (0) 20 7079 1930
www.armanicasa.com

Homeware and interior design from Armani – this is the first Armani/Casa shop to open in the UK. Subtle, pared down furnishing, lighting and fabrics.

4 Bathrooms International

4 Pont Street
SW1X 9EL
+44 (0) 20 7838 7788
www.bathroomsint.com

Top London designers such as Nina Campbell and Joanna Wood have crafted luxuriant bathrooms in various styles ranging from art deco to Russian Palace: this is the place for design inspiration.

5 Christopher Howe

93 Pimlico Road
Belgravia
SW1W 8PH
+44 (0) 20 7730 7987
howelondon.com

Comprehensive range of furnishing and home accessories.

6 David Linley

60 Pimlico Road
Belgravia
SW1W 8LP
+44 (0) 20 7730 7300
www.davidlinley.com

Bespoke, hand made furniture by Princess Margaret's son – his signature style is features neoclassical lines and intricately inlaid woods.

7 David Mellor

4 Sloane Square
Belgravia
SW1W 8EE
+44 (0) 20 7730 4259
www.davidmellordesign.com

Top flight kitchen accessories.

8 Joanna Wood

48a Pimlico Road
Belgravia
SW1W 8LP
+44 (0) 20 7730 5064
www.joannawood.co.uk

Homeware sourced from small independent suppliers in England and abroad.

9 Paul Smith

Albemarle Street
Mayfair
W1S 4BL
+44 (0) 20 7493 4565
www.paulsmith.co.uk

Paul Smith is now a global brand, quirky but classic. This branch in Mayfair, 'Furniture and Things', specialises in designs for the home including ceramics, pillows, cushions and oils.

10 V V Rouleaux

54 Sloane Square
Belgravia
SW1W 8AX
+44 (0) 20 7730 3125
www.vvrouleaux.com

Ribbons galore to add a flourish to your own adventures in interior style a treasure trove of imaginative ideas and elegant touches.



Schools & Colleges

London is a leading global educational centre, having one of the largest populations of overseas students of any city in the world. There are a number of top schools, colleges and universities in the immediate vicinity ensuring the best quality of education.



Education

1 University of the Arts London

Chelsea College of Art and Design
16 John Islip Street
SW1P 4JU
+44 (0) 20 7514 7751
www.chelsea.arts.ac.uk

Chelsea College of Art and Design will allow you to discover an extraordinary network of human, technical and scholarly resources. Situated in an inspiring location alongside Tate Britain.

2 University of Westminster

309 Regent Street
W1B 2UW
+44 (0) 20 7911 5000
www.westminster.ac.uk

With over 300 courses on offer and strong industry links, the University of Westminster is one of the largest universities in central London.

3 Westminster Under School

27 Vincent Square
SW1P 2NN
+44 (0) 20 7821 5788
www.westminsterunder.org.uk

Westminster Under School is an independent preparatory school for boys, aged 7-13, in the centre of London. The school has a rich history, dating back to 1943 when it was founded in Little Dean's Yard, just behind Westminster Abbey. Since 1981 the school has been situated on Vincent Square, overlooking the Westminster School playing fields.

4 Westminster Cathedral RC Primary School

Bessborough Place
SW1V 3SE
+44 (0) 20 7641 5915
www.westminstercathedralprimary.org.uk

Westminster Cathedral is a voluntary aided Roman Catholic Primary School which caters for children from the ages of 5 to 11 years. The Roman Catholic faith lies at the heart of the curriculum and school life.

5 Eaton Square School

79 Eccleston Square
SW1V 1PP
+44 (0) 20 79319469
www.eatonsquareschool.com

Eaton Square School is an independent, coeducational Nursery, Pre-Preparatory and Preparatory school in the heart of central London, educating children from the age of 2 ½ to 13 years of age.

6 Westminster Cathedral Choir School

Ambrosden Avenue
SW1P 1QH
+44 (0) 20 7798 9081
www.choirschool.com

Westminster Cathedral Choir School is a leading Roman Catholic preparatory school for 150 boys aged 7 to 13 (Years 3 to 8) set in the heart of central London.

7 Westminster Kingsway College

76 Vincent Square
SW1P 2PD
+44 (0) 870 060 9800
www.westking.ac.uk

Westminster Kingsway College is one of the largest Further Education colleges in Central London. Westminster Kingsway College is a further education college in London with Centres in Camden and Westminster offering academic and vocational courses at all levels for 14 - 19 year olds and adult learners, such as BTECs, A-Levels, Apprenticeships, Foundation Degrees, Access to HE and short courses.

8 Westminster School

Little Dean's Yard
SW1P 3PF
+44 (0) 20 7963 1000
www.westminster.org.uk

Westminster is an independent boarding and day school in Central London for boys with girls admitted into the sixth form.



Local Amenities

Westminster benefits from a range of amenities within close proximity to Abell & Cleland. From high-end tailors and dry cleaners to delicatessens, your every need is catered for.



Essentials

Local Amenities

Dry Cleaners

1 Prime Dry Cleaners

35 Buckingham Gate
SW1E 6PA
+44 (0) 20 7630 6111
www.primedrycleaners.co.uk

2 Celebrity Dry Cleaners

Neville House
27 Page Street
Westminster
SW1P 4JS
+44 (0) 20 7821 1777
www.celebritydrycleaners.co.uk

3 Regent Dry Cleaners

54 Horseferry Road
SW1P 2AF
+44 (0) 20 7222 0700

Florists

4 Flowers by Van Twisk

36 Ponsonby Terrace
London SW1P 4QA
+44 (0) 20 7834 4071
www.fbvt.com

Flowers by Van Twisk is a high quality florist that delivers all over Central London with a free delivery within the SW1 postcode.

5 Vive la Rose

26 Royal Opera Arcade
SW1Y 4UY
+44 (0) 800 043 6996
www.vivelarose.com

Selected by Time Out magazine as one of the best London florists.

Wellbeing

6 The Runway Salon

Unit 2
11 – 13 Horseferry Road
SW1P 2AH
+44 (0) 20 7828 0235
www.the-runway.co.uk

The Runway is one of the top London salons in London and provides hair and beauty services. They offer a wide range of complimentary services, from delightful refreshments to free wi-fi internet access.

Doctors & Dentists

7 Ambition Health and Performance

223 Vauxhall Bridge Road
SW1V 1EL
+44 (0) 20 7630 5930
www.ambitionfitness.com

Ambition Health and Performance offer integrated health solutions which can involve the medical intervention of osteopathy and physiotherapy alongside the expertise of highly qualified exercise, injury rehabilitation and nutrition and lifestyle professionals.

8 Millbank Medical Centre

20 Page Street
London SW1P 4EN
+44 (0) 20 7834 5502
www.millbankmedicalcentre.co.uk

This newly refurbished medical centre is located on the corner of Page Street, Dean Ryle Street and John Islip Street and offers GP and nurse appointments as well as health education seminars and training.

9 SW1 Dental Studio

41 – 43 Great Peter Street
SW1 P3LT
+44 (0) 20 7222 3002
www.sw1dentalstudio.co.uk

New, modern and friendly dental practice aiming to offer high quality dental care in a friendly and comfortable environment.

Gifts

10 Classic Bindings

61 Cambridge Street
SW1V 4PS
+44 (0) 20 7834 5554
www.classicarebooks.co.uk

Rare, antique and collectible books, including first editions.

11 Davidoff of London

35 St. James's St
SW1A 1HD
+44 (0) 20 7930 1361
www.davidoff.com

This cigar shop has a large walk-in humidor. Selling aged cigars, Cuaba smoking hats, ashtrays and a large selection of top quality humidors.

12 Grosvenor Stationery Company

47 Elizabeth Street
SW1W 9PP
+44 (0) 20 7730 4515
www.grosvenorstationerycompany.com

Beautifully engraved stationery to your specifications.

13 HR Stokes

58 Elizabeth Street
SW1W 9PB
+44 (0) 20 7730 7073
www.henrystokes.co.uk

Bespoke letterheads and invitations, stationery and gifts.

14 Tom Tom Cigars and Coffee

63 Elizabeth Street
SW1W 9PP
+44 (0) 20 7730 1790
www.tomtom.co.uk

Founded in 1997 Tomtom Cigars has become one of London's leading cigar merchants.



Local Amenities

Vets

**15 Elizabeth Street
Veterinary Clinic**
55 Elizabeth Street
Belgravia
London SW1W 9PP
+44 (0) 20 7730 9102
www.esvc.co.uk

A long established, first opinion small animal veterinary practice, offering a 24 hour a day, 365 days a year, by appointment service.

Private Banking

16 Adam & Company
22 King Street
SW1Y 6QY
+44 (0) 20 7839 4615
www.adambank.com

Adam & Company offer a complete private banking service, combining traditional values with a broad range of services. They provide banking and investment management services to private high net worth clients, including individuals, families, trusts, charities and private businesses.

17 Coutts & Co
1 Cadogan Place
SW1X 9PX
+44 (0) 845 309 0047
www.coutts.com

For more than 300 years, Coutts & Co has provided exceptional service valued by driven, astute clients from all walks of life. They provide private investments to wealth management, commercial banking to tax advice.

**18 Duncan Lawrie
Private Banking**
1 Hobart Place
SW1W 0HU
+44 (0) 20 7245 1234
www.duncanlawrie.com

Duncan Lawrie offer a highly personalised private banking service, based on a strongly empathetic, lasting relationship with a Relationship Manager.

Fortnum & Mason

Food & Wine

19 Berry Bros & Rudd
3 St James's Street
SW1A 1EG
+44 (0) 870 900 4300
www.bbr.com

300-year-old wine emporium, with something to suit every palate - £5 bottles of Berry's Good Ordinary Claret, £7000 bottles of Romanée Conti.

20 Charbonnel et Walker
1 Royal Arcade
Old Bond Street
Mayfair
W1S4BT
+44 (0) 20 7491 0939
www.charbonnel.co.uk

In 1875, at the behest of Edward VII, Mme Charbonnel quit her post at Parisian chocolatier Maison Boissier to set up a fine confectionary house in London with Mrs Walker. The result has been 130 years of the finest chocolate in traditional French style.

21 Fortnum & Mason
181 Piccadilly St James's
W1A 1ER
+44 (0) 20 7734 8040
www.fortnumandmason.com

The Royal Family's favourite food hall, and a grocers' shop like a Ferrari 250 GT is a car. Stocks a solid range of accessories, perfumes, furniture and homeware - but is, understandably, famed for its fantastic, upmarket food hall piled high with gastronomic delights.

22 Gastronomía Italia
8 Upper Tachbrook Street
SW1V 1SH
+44 (0) 20 7834 2767

Gastronomia Italia sells a range of Italian cooked meats and savoury items as well as a selection of breads, pasta and cheeses.

23 Godiva
28 Haymarket
Soho
SW1Y 4SP
+44 (0) 20 7321 0716
www.godiva.com

The first Godiva was opened in Brussels approximately 75 years ago by master chocolatier Joseph Draps with a unique formula of rich yet remarkably smooth chocolate. There are now eight branches of this shop in London alone - a chocaholic's heaven.

24 Laduree
71 - 72 Burlington Arcade
Mayfair
W1J 0QX
+44 (0) 20 7491 9155
www.laduree.fr

This famous French patisserie dates back to 1862 - delicate and delightful macarons, fresh petits fours, millefeuille au vieux rhum brun.

25 Paxton & Whitfield
93 Jermyn Street
St James's
SW1Y 6JE
+44 (0) 20 7930 0259
www.paxtonandwhitfield.co.uk

Specialising in French and English artisan cheeses, this historic venue served as cheesemonger to HM Queen Victoria.

26 Rippon Cheese Stores
26 Upper Tachbrook Street
SW1V 1SW
+44 (0) 20 7931 0628
www.ripponcheese.com

Specialist cheese store supplying top quality cheeses from all over Europe to many restaurants, businesses and retail customers both in London and further afield.



giant City Squares,
nd



Map is not to scale and is indicative only

Location Map

Art & Museums

- 1 Tate Britain
- 2 British Museum
- 3 Churchill War Rooms
- 4 Florence Nightingale Museum
- 5 The Hayward Gallery
- 6 London Film Museum
- 7 London Transport Museum
- 8 National Gallery
- 9 National Portrait Gallery
- 10 Royal Academy of Arts
- 11 Saatchi Gallery
- 12 Sir John Soane's Museum

Theatres

- 1 Adelphi Theatre
- 2 Aldwych Theatre
- 3 Cambridge Theatre
- 4 Criterion Theatre
- 5 Duke of York's Theatre
- 6 Garrick Theatre
- 7 Gielgud Theatre
- 8 London Coliseum / English National Opera
- 9 Noel Coward Theatre
- 10 The Playhouse Theatre
- 11 Royal Opera House
- 12 Theatre Royal Haymarket
- 13 Wyndham's Theatre

Fashion & Tailoring

- 1 Alfred Dunhill
- 2 Basia Zarzycka
- 3 Bates Hats
- 4 Benson & Clegg
- 5 Burberry
- 6 Church's
- 7 Duchamp
- 8 Edward Green
- 9 Harrods
- 10 Harvey Nichols
- 11 Harvie & Hudson
- 12 Hilditch & Key
- 13 Jasper Littman
- 14 John Lobb's & Co.
- 15 Lock & Co.
- 16 Philip Treacy
- 17 Rachel Trevor Morgan Millinery
- 18 Redwood & Feller
- 19 Selfridges
- 20 Stewart Parvin
- 21 Thomas Pink
- 22 William Hunt

Bars & Restaurants

- 1 Altitude 360
- 2 Bistro 51
- 3 The Cinnamon Club
- 4 Gordons Wine Bar
- 5 Hélène Darroze at The Connaught
- 6 Hibiscus
- 7 Inn The Park
- 8 Le Gavroche
- 9 Marcus Wareing at the Berkeley
- 10 Osteria dell'Angolo
- 11 Quilon
- 12 Quirinale
- 13 Roux at Parliament Square

Hotels

- 1 Corinthia Hotel
- 2 Corona
- 3 Crowne Plaza St James Hotel
- 4 Doubletree by Hilton London
- 5 Dukes Hotel
- 6 Park Plaza Westminster Bridge
- 7 Rochester Grange
- 8 Rubens At The Palace
- 9 The Stafford London by Kempinski
- 10 Thistle Westminster
- 11 Victoria Park Plaza
- 12 51 Buckingham Gate, Taj Suites And Residences

Places of Interest

- 1 Bessborough Gardens
- 2 Buckingham Palace
- 3 Green Park
- 4 Horse Guards - Whitehall
- 5 Houses of Parliament
- 6 Hyde Park
- 7 St James's Park
- 8 St Johns Garden
- 9 Victoria Embankment Gardens
- 10 Vincent Square
- 11 Westminster Abbey Precincts and the College Garden
- 12 Westminster Abbey

Art & Antiques

- 1 Appley Hoare Antiques
- 2 Arthur Brett
- 3 Alon Zakaim Fine Art
- 4 Elizabeth Street Antiques
- 5 Other Criteria
- 6 Pendulum of Mayfair
- 7 Sotheby's

Home Furnishing

- 1 Alessi
- 2 Alma Home
- 3 Armani/Casa
- 4 Bathrooms International
- 5 Christopher Howe
- 6 David Linley
- 7 David Mellor
- 8 Joanna Wood
- 9 Paul Smith
- 10 V V Rouleaux

Schools, Colleges & Universities

- 1 University of the Arts London
- 2 University of Westminster
- 3 Westminster Under School
- 4 Westminster Cathedral RC
- 5 Eaton Square School
- 6 Westminster Cathedral
- 7 Westminster Kingsway College
- 8 Westminster School

Local Amenities

- 1 Prime Dry Cleaners
- 2 Celebrity Dry Cleaners
- 3 Regent Dry Cleaners
- 4 Flowers by Van Twisk
- 5 Vive la Rose
- 6 The Runway Salon
- 7 Ambition Health and Performance
- 8 Millbank Medical Centre
- 9 SW1 Dental Studio
- 10 Classic Bindings
- 11 Davidoff of London
- 12 Grosvenor Stationery Company
- 13 HR Stokes
- 14 Tom Tom Cigars and Coffee
- 15 Elizabeth Street
- 16 Adam & Company
- 17 Coult's & Co
- 18 Duncan Lawrie
- 19 Berry Bros & Rudd
- 20 Charbonnel et Walker
- 21 Fortnum & Mason
- 22 Gastronomía Italia
- 23 Godiva
- 24 Laduree
- 25 Paxton & Whitfield
- 26 Rippon Cheese Stores

Contact

+44 (0)20 7720 4000

abellandcleland@berkeleyhomes.co.uk

www.abellandcleland.co.uk



Berkeley
Designed for life

www.abellandcleland.co.uk

Berkeley
Designed for life
Designed for life