



Riverwalk, Millbank **SWIP**



Riverwalk, Pimlico **SW1P**

A stylish and well thought out two bedroom apartment for sale in the highly sought after Riverwalk Apartments, Millbank, SW1P.

This apartment is settled on the third floor of the impressive building and is south facing allowing an abundance of natural light in to the property and providing exceptional views over the River Thames and the London skyline. The open plan kitchen/ living room is immaculate in its design and offers top of the range appliances, marble kitchen island and a generous seating area which flows well onto the south facing terrace.



Guide price: £2,500,000

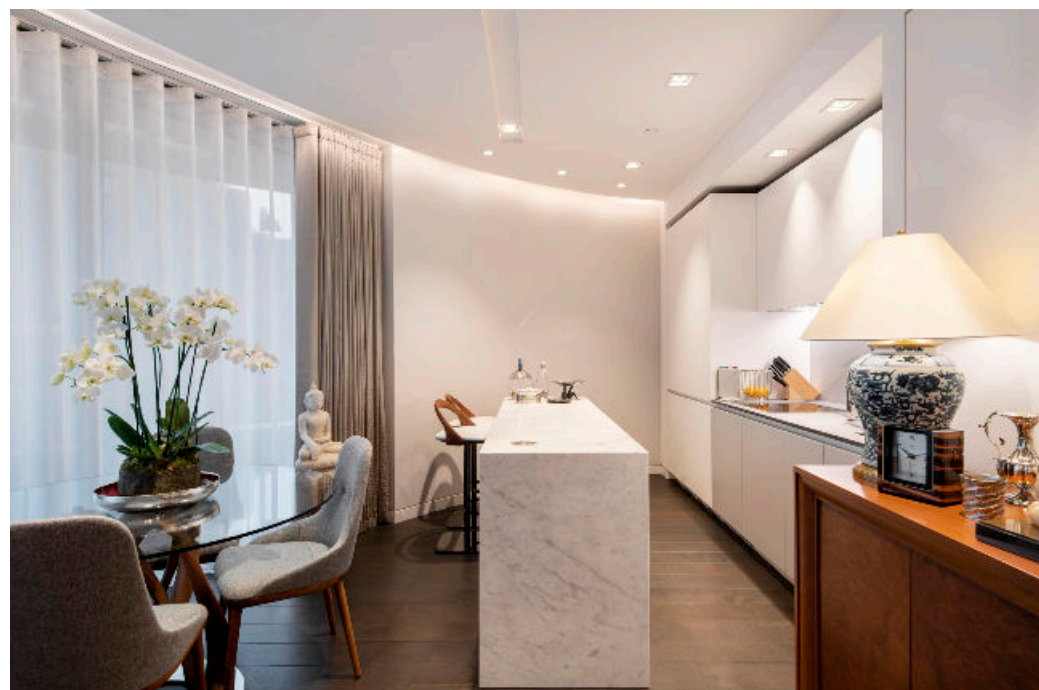
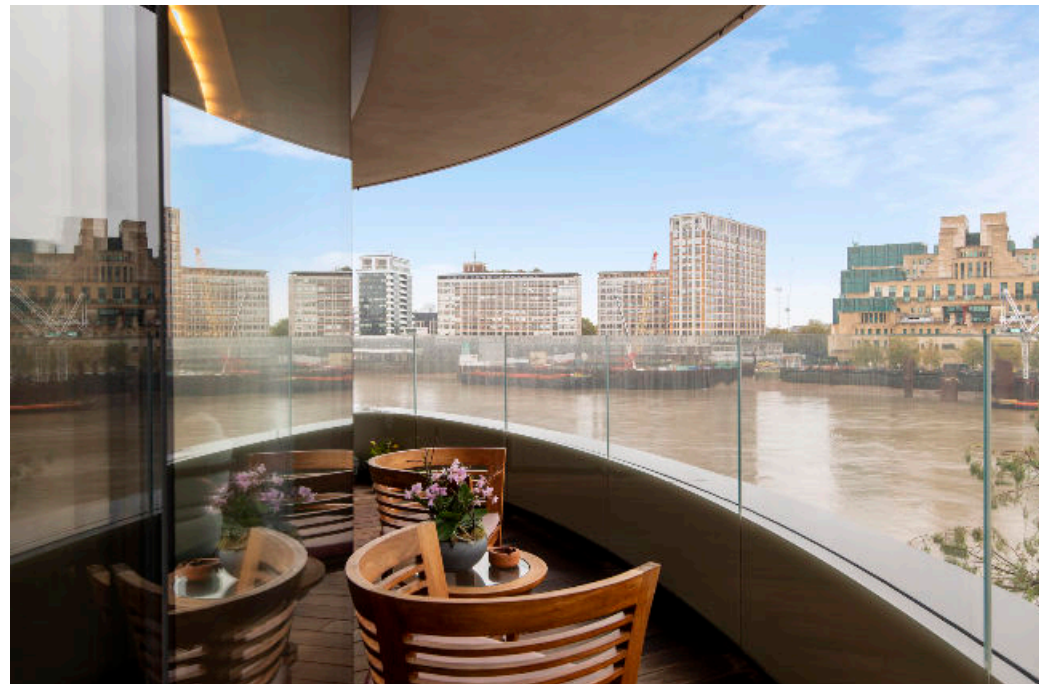
Tenure: Leasehold: approximately 987 years remaining

Service charge: £20,000 per annum, reviewed yearly, next review due 2024

Ground rent: £1,200 per annum, reviewed yearly, next review due 2024

Local authority: City of Westminster

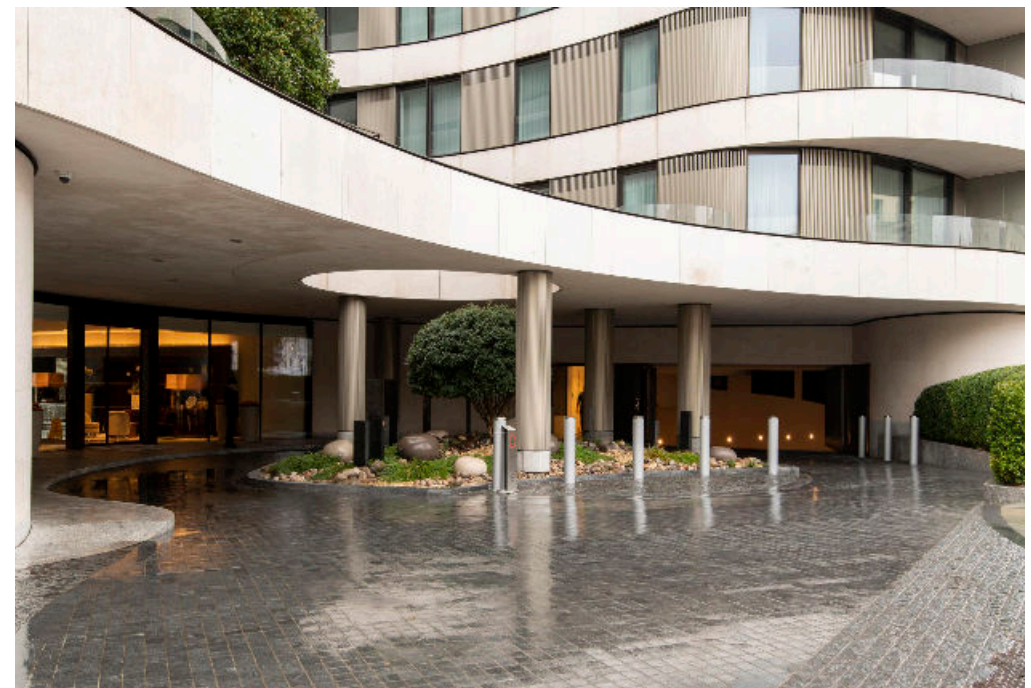
Council tax band: H

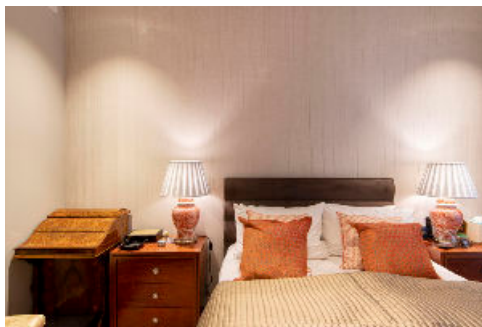


The principal bedroom benefits from its own dressing room and large en suite bathroom with dual sinks, stand in shower and separate bath. The second bedroom also offers en suite facilities in the form of a generously sized shower room along with built in storage and westerly views over Vauxhall Bridge and the River. A further guest bathroom and built in utility/ storage space make up this stylish apartment. Included in the apartment is also an underground parking space, a private storage room, 24 hour concierge cover and a fully equipped resident's gym.

Location

Located in the heart of Westminster, SW1, within proximity of Tate Britain, the University of Arts, the Houses of Parliament, and a host of London's most famous attractions. Pimlico underground station offers easy access into Central London. Vauxhall station is only 0.3 miles away. All times and distances are approximate.

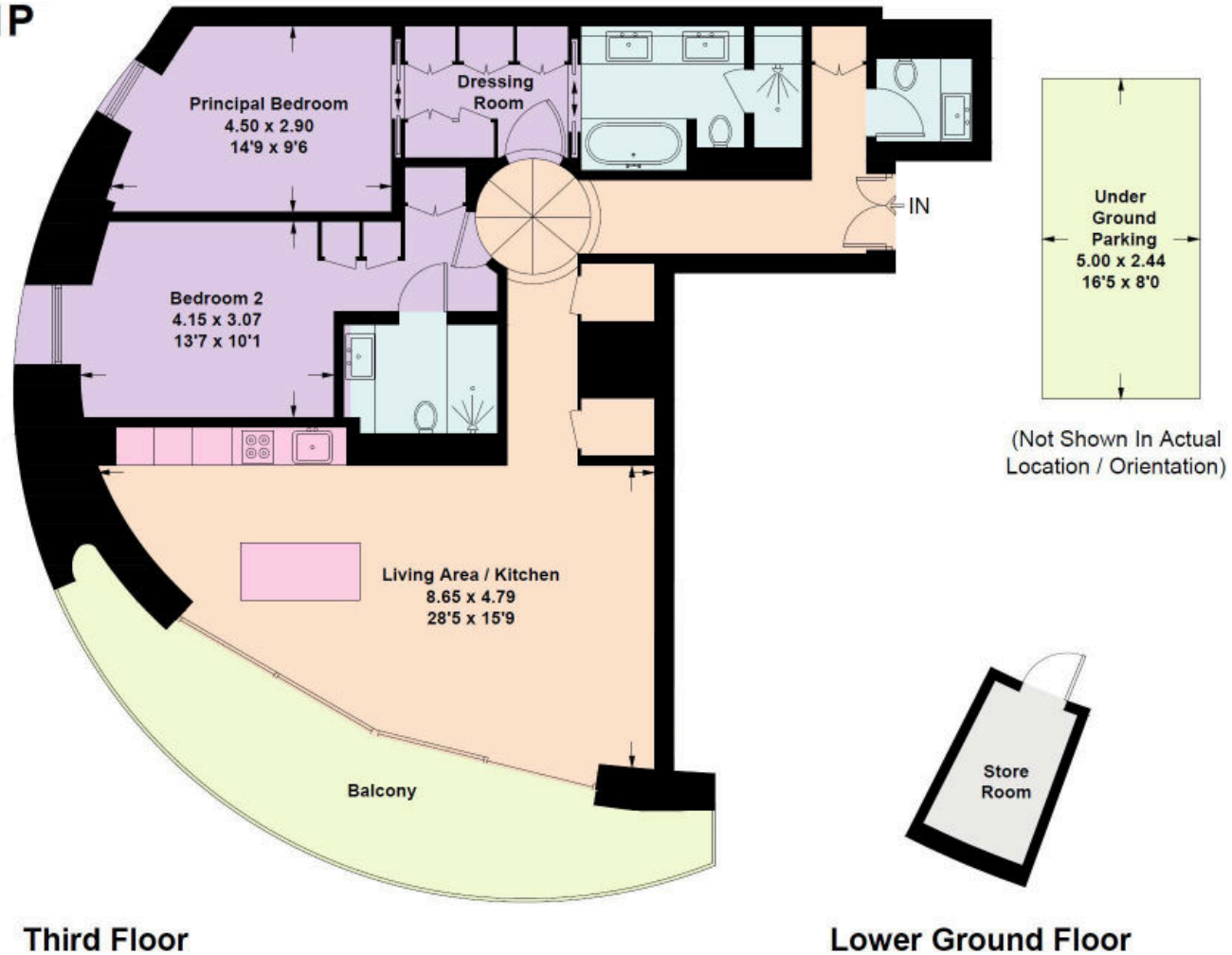




A stylish and well thought out apartment for sale in the highly sought after Riverwalk Apartments

Riverwalk, Millbank, SW1P

Approximate Area = 110.3 sq m / 1187 sq ft
Outbuilding = 3.6 sq m / 39 sq ft
Total = 113.9 sq m / 1226 sq ft



Knight Frank
Battersea & Riverside
346 Queenstown Road
London
SW11 8BY
knightfrank.co.uk

We would be delighted to tell you more
Jack Gravestock
020 3667 6751
jack.gravestock@knightfrank.com

Fixtures and fittings: A list of the fitted carpets, curtains, light fittings and other items fixed to the property which are included in the sale (or may be available by separate negotiation) will be provided by the Seller's Solicitors.
Important Notice: 1. Particulars: These particulars are not an offer or contract, nor part of one. You should not rely on statements by Knight Frank LLP in the particulars or by word of mouth or in writing ("information") as being factually accurate about the property, its condition or its value. Neither Knight Frank LLP nor any joint agent has any authority to make any representations about the property, and accordingly any information given is entirely without responsibility on the part of the agents, seller(s) or lessor(s). 2. Photos, Videos etc: The photographs, property videos and virtual viewings etc. show only certain parts of the property as they appeared at the time they were taken. Areas, measurements and distances given are approximate only. 3. Regulations etc: Any reference to alterations to, or use of, any part of the property does not mean that any necessary planning, building regulations or other consent has been obtained. A buyer or lessee must find out by inspection or in other ways that these matters have been properly dealt with and that all information is correct. 4. VAT: The VAT position relating to the property may change without notice. 5. To find out how we process Personal Data, please refer to our Group Privacy Statement and other notices at <https://www.knightfrank.com/legals/privacy-statement>.
Particulars dated October 2023. Photographs and videos dated October 2023.
All information is correct at the time of going to print. Knight Frank is the trading name of Knight Frank LLP. Knight Frank LLP is a limited liability partnership registered in England and Wales with registered number OC305934. Our registered office is at 55 Baker Street, London W1U 8AN. We use the term 'partner' to refer to a member of Knight Frank LLP, or an employee or consultant. A list of members names of Knight Frank LLP may be inspected at our registered office. If you do not want us to contact you further about our services then please contact us by either calling 020 3544 0692, email to marketing.help@knightfrank.com or post to our UK Residential Marketing Manager at our registered office (above) providing your name and address.

