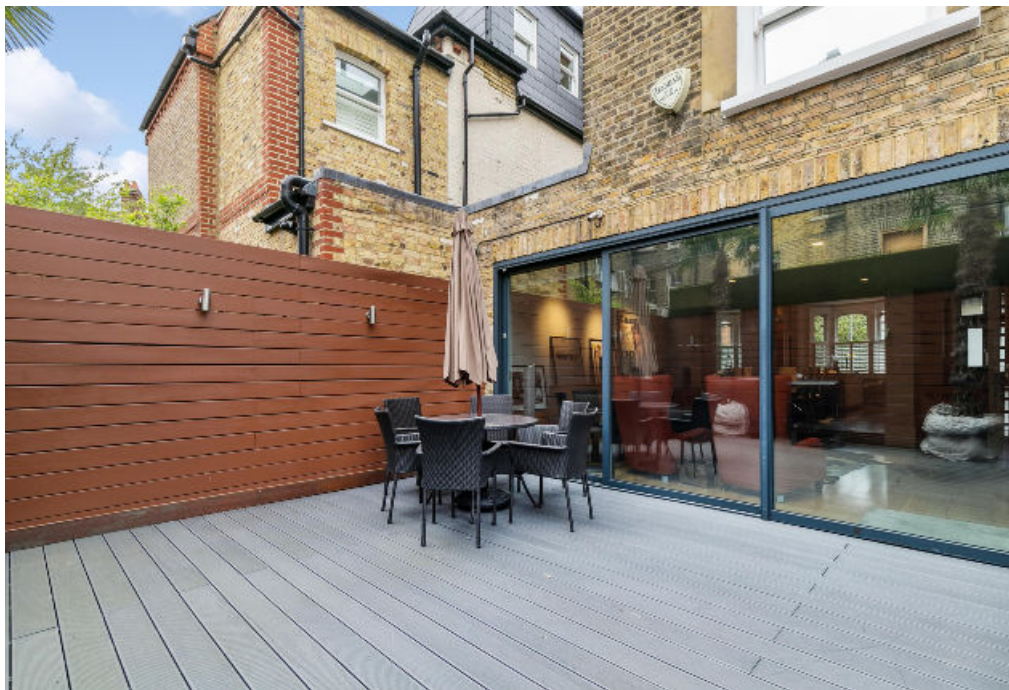




Brynmaer Road, Battersea SW11



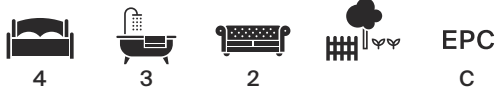


Brynmaer Road

Battersea SW11

A charming Victorian home offering close to 2,500 sq ft of space, this house would be popular to those looking to up-size or a family moving to the area to make the most of Battersea's excellent schooling options and easy access to Battersea Park.

Upon entry the hallway opens out into a bright, open-plan kitchen with granite counter tops, integrated appliances and a large kitchen island, with the space then opening out to offer further dining space. To the rear of the ground floor is an expansive dining room, a bright space which benefits from floor-to-ceiling windows looking out onto the south-facing garden, as well as a large skylight drawing in light from above.



Guide price: £2,700,000

Tenure: Freehold

Local authority: London Borough of Wandsworth

Council tax band: G



The lower ground floor holds a flexible space which can be fulfil a number of functions, such as a further bedroom, office, gym or cinema room, off which there is a separate WC and a helpful utility/boiler room.

The first floor holds three large double bedrooms, holding a wealth of storage and two generous, modern and fully fitted bathrooms. The top floor of the house encompasses a stunning principal suite, with built in storage and a large dressing area, with stairs leading down to a huge en suite bathroom.



Location

Located on the doorstep of Battersea Park and its 200 acres of green space and leisure facilities, the house has many amenities on its doorstep. The ever increasing number of shops, bars and restaurants at Battersea Power Station are just a short walk through Battersea Park, with the Kings Road being walking distance over Albert Bridge. The local amenities of Parkgate Road are just around the corner, such as Bayley and Sage and the Prince Albert pub. This area also proves popular due to its' proximity to Sloane Square and Victoria, either on foot or by the regular bus services serving the area, with the Thames Clipper departing from Battersea Power Station providing a more relaxed way to travel into the city.

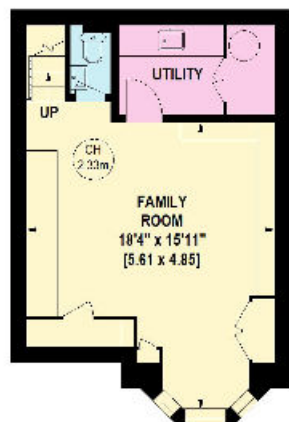


Transport links are available from the new Northern Line extension at Battersea Power Station, with Queenstown Road and Battersea Park rail stations also within walking distance.

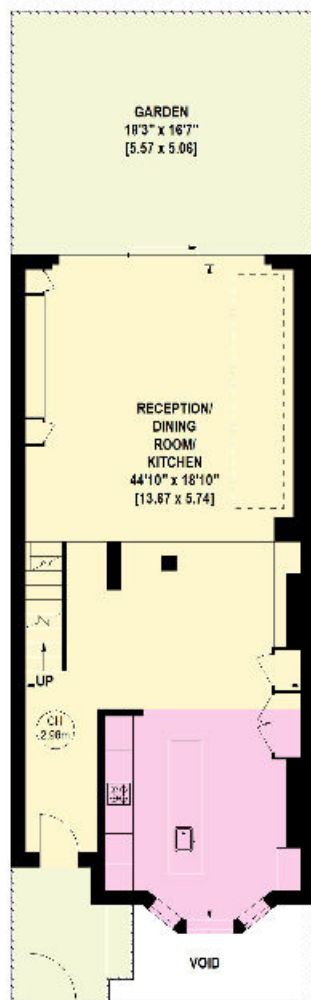
Brynmaer Road, SW11

Approximate Gross Internal Floor Area
232 sq m / 2,498 sq ft

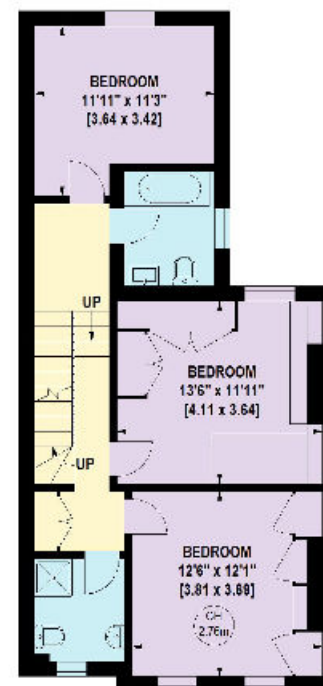
This plan is for guidance only and must not be relied upon as a statement of fact. Attention is drawn to the important notice on the last page of the text of the Particulars.



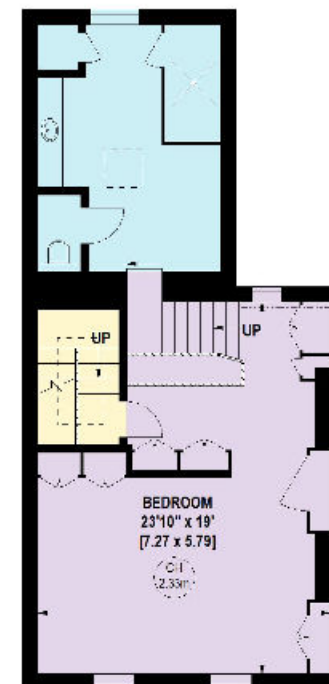
Lower Ground Floor



Ground Floor



First Floor



Second Floor



Knight Frank
Battersea & Riverside
346 Queenstown Road
London
SW11 8BY
knightfrank.co.uk

We would be delighted to tell you more
Jack Gravestock
020 3667 6751
jack.gravestock@knightfrank.com



Fixtures and fittings: A list of the fitted carpets, curtains, light fittings and other items fixed to the property which are included in the sale (or may be available by separate negotiation) will be provided by the Seller's Solicitors.
Important Notice: 1. Particulars: These particulars are not an offer or contract, nor part of one. You should not rely on statements by Knight Frank LLP in the particulars or by word of mouth or in writing ("information") as being factually accurate about the property, its condition or its value. Neither Knight Frank LLP nor any joint agent has any authority to make any representations about the property, and accordingly any information given is entirely without responsibility on the part of the agents, seller(s) or lessor(s). 2. Photos, Videos etc: The photographs, property videos and virtual viewings etc. show only certain parts of the property as they appeared at the time they were taken. Areas, measurements and distances given are approximate only. 3. Regulations etc: Any reference to alterations to, or use of, any part of the property does not mean that any necessary planning, building regulations or other consent has been obtained. A buyer or lessee must find out by inspection or in other ways that these matters have been properly dealt with and that all information is correct. 4. VAT: The VAT position relating to the property may change without notice. 5. To find out how we process Personal Data, please refer to our Group Privacy Statement and other notices at <https://www.knightfrank.com/legals/privacy-statement>.
Particulars dated October 2022. Photographs and videos dated October 2022.
All information is correct at the time of going to print. Knight Frank is the trading name of Knight Frank LLP. Knight Frank LLP is a limited liability partnership registered in England and Wales with registered number OC305934. Our registered office is at 55 Baker Street, London W1U 8AN. We use the term 'partner' to refer to a member of Knight Frank LLP, or an employee or consultant. A list of members names of Knight Frank LLP may be inspected at our registered office. If you do not want us to contact you further about our services then please contact us by either calling 020 3544 0692, email to marketing.help@knightfrank.com or post to our UK Residential Marketing Manager at our registered office (above) providing your name and address.