



Chelsea Crescent, Chelsea Harbour **SW10**

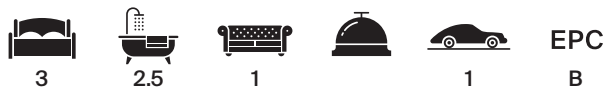
---

# Chelsea Crescent, London SW10

---

Welcome to Chelsea Crescent, a prestigious riverside development. This three bedroom, two bathroom offers unparalleled views of the River Thames from the private balcony, urban living at its finest.

As you step into the property, there is a large entranceway with plenty of storage for shoes and coats. As you move through the property, you are greeted by a spacious living room bathed in natural light. The large sliding doors step on to a private balcony, the perfect spot to soak in the riverside life. The kitchen has been fitted with modern units and appliances.



**Guide price:** £1,795,000

**Tenure:** Leasehold: approximately 178 years remaining

**Service charge:** £18,801.13 per annum, reviewed yearly, next review due 2024

**Local authority:** London Borough of Hammersmith and Fulham

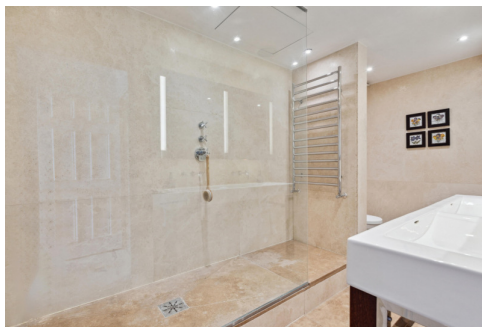
**Council tax band:** H

The apartment features three well proportioned bedrooms with spacious built-in wardrobes. The principal bedroom boasts access to the balcony and an en suite bathroom, providing privacy and convenience. The remaining bedrooms share access to the stylish family bathroom. The property also benefits from a secure underground parking space and 24-hour concierge service.

Chelsea Harbour is situated on the north bank of the River Thames and was built on the site of an ex-British Rail Coal Yard and Victorian-era railway coaling dock.

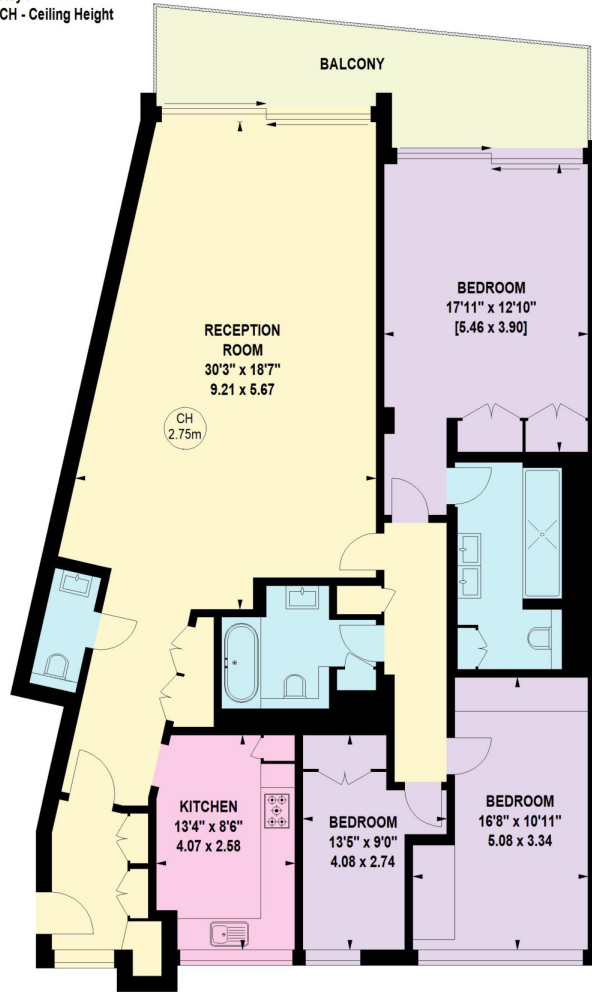
Chelsea Crescent is well located for the shops and restaurants on Kings Road, with Imperial Wharf station located on its doorstep. Central London is easily accessible with direct rail links to Clapham Junction, Shepherds Bush (Central line and Westfield shopping centre) and West Brompton (District line). Nearest tube stations to Chelsea Harbour are Fulham Broadway and Sloane Square (District/Circle line) The River bus service is also available at Chelsea Harbour Pier.





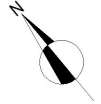
A prestigious  
riverside  
apartment  
overlooking the  
River Thames.

Key :  
CH - Ceiling Height



**FOURTH FLOOR**

**Chelsea Crescent,  
Chelsea Harbour, SW10**  
Approximate Gross Internal Area : 149.75 Sq. metres  
1612 Sq. feet



This plan is for guidance only and must not be relied upon as a statement of fact. Attention is drawn to the important notice on the last page of the text of the Particulars.

**Knight Frank**  
Battersea & Riverside  
346 Queenstown Road  
London  
SW11 8BY  
[knightfrank.co.uk](http://knightfrank.co.uk)

We would be delighted to tell you more  
**Sarah Bennett**  
020 3866 2924  
[sarah.bennett@knightfrank.com](mailto:sarah.bennett@knightfrank.com)



Fixtures and fittings: A list of the fitted carpets, curtains, light fittings and other items fixed to the property which are included in the sale (or may be available by separate negotiation) will be provided by the Seller's Solicitors.  
Important Notice: 1. Particulars: These particulars are not an offer or contract, nor part of one. You should not rely on statements by Knight Frank LLP in the particulars or by word of mouth or in writing ("information") as being factually accurate about the property, its condition or its value. Neither Knight Frank LLP nor any joint agent has any authority to make any representations about the property, and accordingly any information given is entirely without responsibility on the part of the agents, seller(s) or lessor(s). 2. Photos, Videos etc: The photographs, property videos and virtual viewings etc. show only certain parts of the property as they appeared at the time they were taken. Areas, measurements and distances given are approximate only. 3. Regulations etc: Any reference to alterations to, or use of, any part of the property does not mean that any necessary planning, building regulations or other consent has been obtained. A buyer or lessee must find out by inspection or in other ways that these matters have been properly dealt with and that all information is correct. 4. VAT: The VAT position relating to the property may change without notice. 5. To find out how we process Personal Data, please refer to our Group Privacy Statement and other notices at <https://www.knightfrank.com/legals/privacy-statement>.  
Particulars dated January 2024, Photographs and videos dated January 2024.  
All information is correct at the time of going to print. Knight Frank is the trading name of Knight Frank LLP. Knight Frank LLP is a limited liability partnership registered in England and Wales with registered number OC305934. Our registered office is at 55 Baker Street, London W1U 8AN. We use the term 'partner' to refer to a member of Knight Frank LLP, or an employee or consultant. A list of members names of Knight Frank LLP may be inspected at our registered office. If you do not want us to contact you further about our services then please contact us by either calling 020 3544 0692, email to [marketing.help@knightfrank.com](mailto:marketing.help@knightfrank.com) or post to our UK Residential Marketing Manager at our registered office (above) providing your name and address.