



Cyril Mansions, Prince of Wales Drive, London SW11





# Prince of Wales Drive, London SW11

---

This extraordinary apartment is arranged over the first floor of a handsome red brick mansion building, located opposite Battersea Park. The property has been renovated to a high standard throughout, with a great deal of attention to detail put in. The accommodation comprises a bright and spacious west-facing living room with a feature fireplace and large sash windows, a stunning kitchen diner with bespoke cabinetry and space for a six seater dining table, a large double bedroom with an abundance of in-built storage, and a gorgeous shower room. Residents of this building enjoy access to a beautifully maintained communal garden, which provides an idyllic setting to relax in, and secure bike storage. There is also a live-in porter.



**Guide price:** £800,000

**Tenure:** Share of freehold: approximately 948 years remaining

**Service charge:** £451.77 per annum, reviewed every year, next review due 2025

**Local authority:** London Borough of Wandsworth

**Council tax band:** D











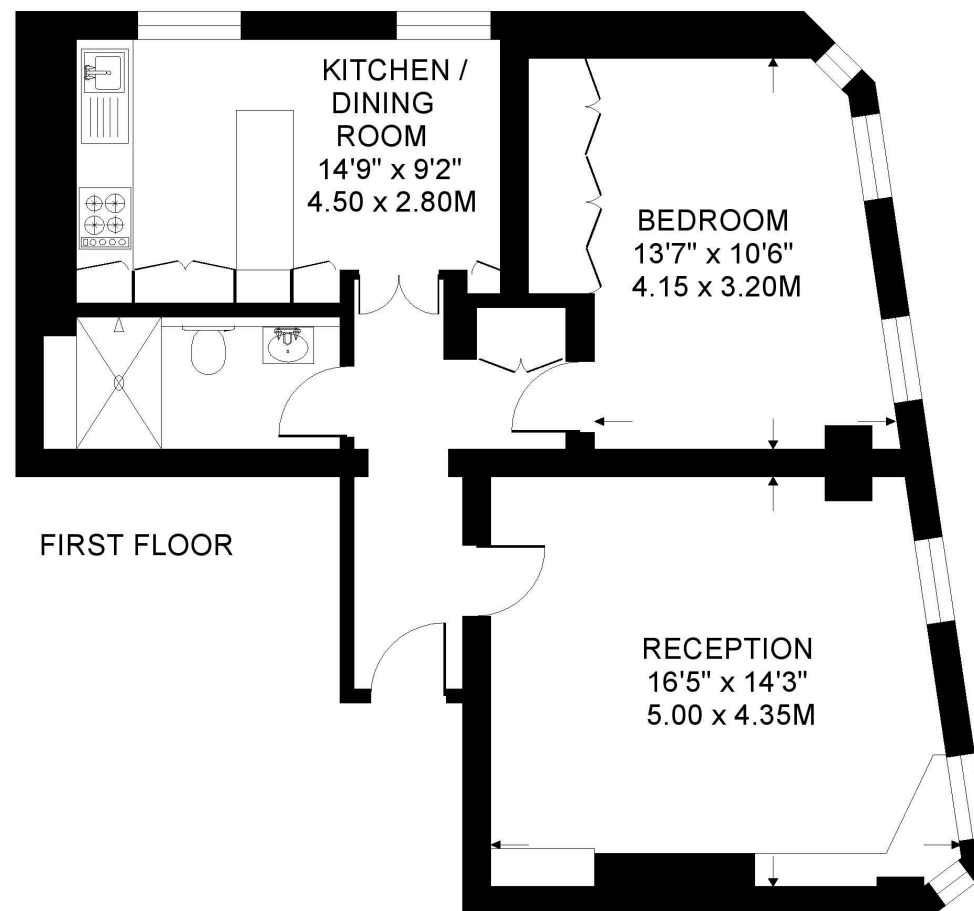




## Cyril Mansions, SW11

**Approximate Gross Internal Floor Area**  
**61.9 sq m / 667 sq ft**

This plan is for guidance only and must not be relied upon as a statement of fact. Attention is drawn to the important notice on the last page of the text of the Particulars.



**Knight Frank**

**Battersea & Riverside**

346 Queenstown Road

London

SW11 8BY

[knightfrank.co.uk](https://www.knightfrank.co.uk)

We would be delighted to tell you more

**Sarah Bennett**

020 3866 2924

[sarah.bennett@knightfrank.com](mailto:sarah.bennett@knightfrank.com)



Fixtures and fittings: A list of the fitted carpets, curtains, light fittings and other items fixed to the property which are included in the sale (or may be available by separate negotiation) will be provided by the Seller's Solicitors.

Important Notice: 1. Particulars: These particulars are not an offer or contract, nor part of one. You should not rely on statements by Knight Frank LLP in the particulars or by word of mouth or in writing ("Information") as being factually accurate about the property, its condition or its value. Neither Knight Frank LLP nor any joint agent has any authority to make any representations about the property, and accordingly any information given is entirely without responsibility on the part of the agents, seller(s) or lessor(s). 2. Photos, Videos etc: The photographs, property videos and virtual viewings etc. show only certain parts of the property as they appeared at the time they were taken. Areas, measurements and distances given are approximate only. 3. Regulations etc: Any reference to alterations to, or use of, any part of the property does not mean that any necessary planning, building regulations or other consent has been obtained. A buyer or lessee must find out by inspection or in other ways that these matters have been properly dealt with and that all information is correct. 4. VAT: The VAT position relating to the property may change without notice. 5. To find out how we process Personal Data, please refer to our Group Privacy Statement and other notices at <https://www.knightfrank.com/legals/privacy-statement>.

Particulars dated September 2024. Photographs and videos dated September 2024.

Knight Frank is the trading name of Knight Frank LLP. Knight Frank LLP is a limited liability partnership registered in England and Wales with registered number OC305934. Our registered office is at 55 Baker Street, London W1U 8AN where you may look at a list of members' names. If we use the term 'partner' when referring to one of our representatives, that person will either be a member, employee, worker or consultant of Knight Frank LLP and not a partner in a partnership. If you do not want us to contact you further about our services then please contact us by either calling 020 3544 0692, email to [marketing.help@knightfrank.com](mailto:marketing.help@knightfrank.com) or post to our UK Residential Marketing Manager at our registered office (above) providing your name and address.