



Switch House West, Battersea Power Station SW11



Battersea Power Station

SW11

A one of a kind, luxurious four bedroom duplex apartment located on the seventh floor of Switch House West, within Battersea Power Station.

Featuring floor to ceiling windows, offering far reaching views over the River Thames and city of London, this historic Battersea Power Station apartment is flooded with an abundance of natural light.



4



4



1



EPC

B

Guide price: £6,999,995

Tenure: Leasehold: approximately 990 years remaining

Service charge: £17,700 per annum, reviewed annually, next review due 2024

Ground rent: £1,600 per annum, reviewed annually, next review due 2024

Local authority: London Borough of Wandsworth

Council tax band: G



On the upper floor is an exceptional private roof terrace, residents benefit from a private garden, swimming pool, health spa and gym and a residents' club/bar.

There is 24 hour concierge and the apartment comes with two secure underground parking spaces.

The principal bedroom benefits from a bespoke walk-in dressing room, views of the river and a luxurious ensuite bathroom with a cooper bathtub and a walk-in shower.

The state of the art integrated kitchen is in keeping with the heritage design for the power station, benefiting from built in Miele appliances and breakfast bar. This duplex apartment is spacious and ideal for entertaining friends and family.

Switch House West, situated in Battersea Power Station development, offers convenient access to Battersea Park and nearby rail stations such as Queenstown Road and Battersea Park, with direct routes to Waterloo. The area is well-connected via its own underground station on the Northern line, simplifying city commutes. Residents benefit from proximity to popular spots such as The King's Road, Sloane Square and Victoria, along with reputable schools such as Newton Prep and Thomas's. The immediate area offers a variety of leisure facilities and amenities including the newly opened retail space inside the iconic Battersea Power Station.

We have been informed that the building has been constructed using some combustibile materials. However, we have received documents confirming that the building has been assessed by a competent person, who has concluded that the fire risk is sufficiently low, and that no remedial works are required to the external wall of the building. If necessary, further information can be provided upon request.



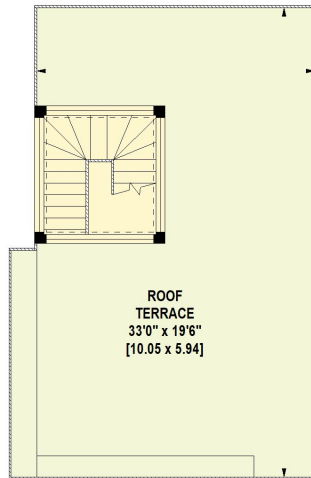




Switch House West, SW11

Approximate Gross Internal Floor Area
217.94 sq m / 2,346 sq ft

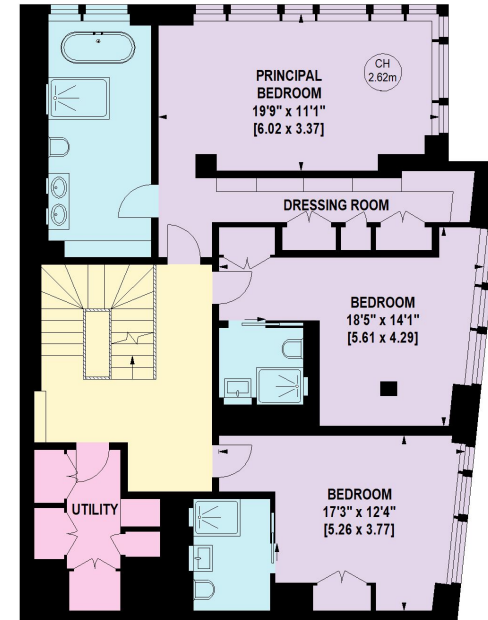
This plan is for guidance only and must not be relied upon as a statement of fact. Attention is drawn to the important notice on the last page of the text of the Particulars.



NINTH FLOOR



SEVENTH FLOOR



EIGHTH FLOOR

Knight Frank
Battersea & Riverside
346 Queenstown Road
London
SW11 8BY
knightfrank.co.uk

We would be delighted to tell you more
Sian-Louise Tangney
020 3866 2938
sianlouise.tangney@knightfrank.com



Fixtures and fittings: A list of the fitted carpets, curtains, light fittings and other items fixed to the property which are included in the sale (or may be available by separate negotiation) will be provided by the Seller's Solicitors.

Important Notice: 1. Particulars: These particulars are not an offer or contract, nor part of one. You should not rely on statements by Knight Frank LLP in the particulars or by word of mouth or in writing ("information") as being factually accurate about the property, its condition or its value. Neither Knight Frank LLP nor any joint agent has any authority to make any representations about the property, and accordingly any information given is entirely without responsibility on the part of the agents, seller(s) or lessor(s). 2. Photos, Videos etc: The photographs, property videos and virtual viewings etc. show only certain parts of the property as they appeared at the time they were taken. Areas, measurements and distances given are approximate only. 3. Regulations etc: Any reference to alterations to, or use of, any part of the property does not mean that any necessary planning, building regulations or other consent has been obtained. A buyer or lessee must find out by inspection or in other ways that these matters have been properly dealt with and that all information is correct. 4. VAT: The VAT position relating to the property may change without notice. 5. To find out how we process Personal Data, please refer to our Group Privacy Statement and other notices at <https://www.knightfrank.com/legals/privacy-statement>.

Particulars dated 13/03/2024. Photographs and videos dated 27/02/2024.

All information is correct at the time of going to print. Knight Frank is the trading name of Knight Frank LLP. Knight Frank LLP is a limited liability partnership registered in England and Wales with registered number OC305934. Our registered office is at 55 Baker Street, London W1U 8AN. We use the term 'partner' to refer to a member of Knight Frank LLP, or an employee or consultant. A list of members names of Knight Frank LLP may be inspected at our registered office. If you do not want us to contact you further about our services then please contact us by either calling 020 3544 0692, email to marketing.help@knightfrank.com or post to our UK Residential Marketing Manager at our registered office (above) providing your name and address.