






DUDSWELL RISE

Dudswell, Berkhamsted, HP4



A FIVE-BEDROOM PERIOD HOME IN THE PICTURESQUE HAMLET OF DUDSWELL

A wonderful home in a private position with Edwardian origins, a wealth of period features and high ceilings throughout

			EPC
5	2	2	D (56)

Local authority: Dacorum Borough Council
Council Tax Band: G
Services: Mains water, electricity, gas and drainage.
Tenure: Freehold
What3Words: ///swooned.glimmers.wedding

LOCATION

Dudswell is a pretty hamlet situated north-west of the historic market town of Berkhamsted. A stretch of the Grand Union Canal runs next to the hamlet, which offers delightful towpath walks nearby. The wider area offers a good range of leisure facilities, with walking and riding in the surrounding countryside. There is a wide variety of both state and private schools in the area. Nearby Northchurch is home to a small supermarket, a bakery and a public house amongst other commercial establishments. Within close proximity you will find Berkhamsted, which has an abundance of shopping, eating and leisure establishments – as well as a train station with services to London Euston.

High Street South, Northchurch – 0.5 miles

Berkhamsted High Street – 1.4 miles

Berkhamsted Train Station – 2.2 miles

M25 J20 – 10 miles

M1 J8 – 10.3 miles

(All distances and times are approximate)





DUDSWELL RISE

As you enter the property, you are welcomed by a spacious entrance hallway complete with a wood burning stove and a striking staircase which rises to the first floor; this sets a notable first impression of the home. On the ground floor you will find two generous reception rooms and a wonderful kitchen and dining area. All of these rooms have a pleasant outlook over the grounds and gardens. To complete the ground floor accommodation is a downstairs cloakroom.

Upstairs are five bedrooms including a delightful principal bedroom with en-suite. The impressive ceiling height continues on the first floor and the rooms have a great sense of volume. The bedrooms to the front of the property enjoy a picturesque view over the neighbouring countryside. One of the bedrooms to the rear of the property benefits from a balcony, a lovely feature space which looks onto the rear gardens. There is a family shower room to complete the upstairs accommodation.

Furthermore, there is a basement, accessed externally, which makes for highly convenient additional storage space.

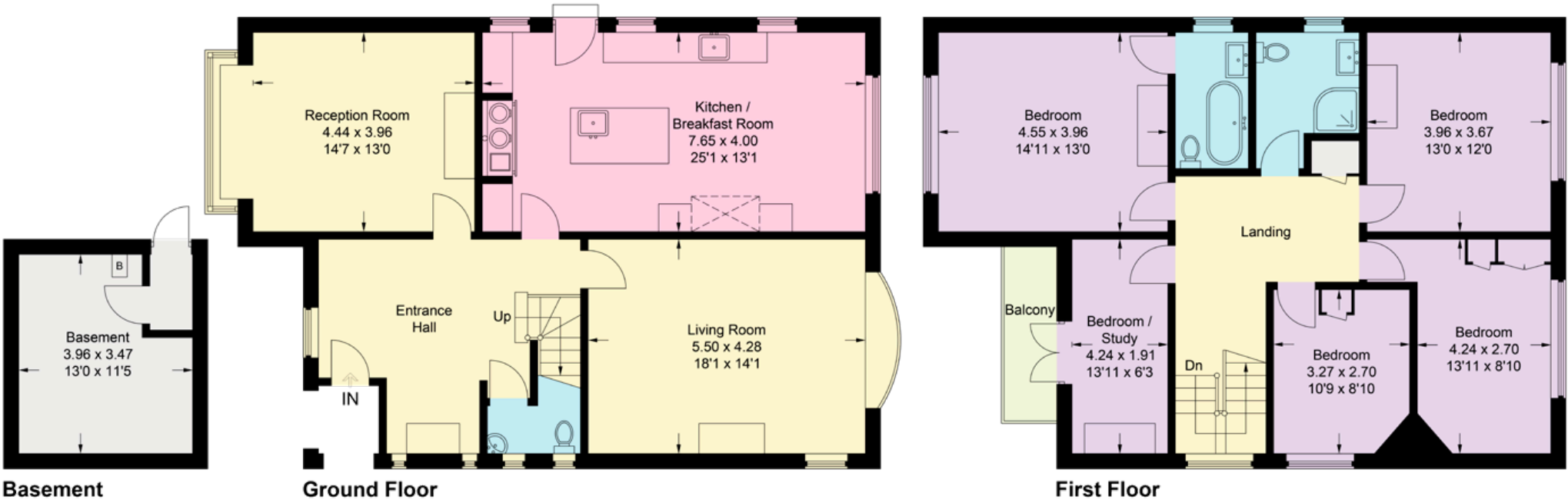
Dudswell Rise is a charming period home with wonderful proportions throughout, sitting in a private and generous plot.





GARDENS & GROUNDS

Dudswell Rise is accessed via Dudswell Lane. A private driveway leads up to the house, where you are then met by a gravelled driveway with ample parking. The house has an exceptionally private feel, sitting in a generous plot of approximately 0.33 acres. The gardens are well-presented with hedging and an expansive lawned area. There is also a patio area ideal for outside dining in the warmer months. The rear garden has a south-west orientation.



Approximate Gross Internal Area
Basement = 13.7 sq m / 147.8 sq ft
Ground Floor = 95.6 sq m / 1,028.8 sq ft
First Floor = 88.7 sq m / 954.9 sq ft
Total = 198.0 sq m / 2,131.5 sq ft

This plan is for layout guidance only. Not drawn to scale unless stated. Windows and door openings are approximate. Whilst every care is taken in the preparation of this plan, please check all dimensions, shapes and compass bearings before making any decisions reliant upon them.

We would be delighted
to tell you more.

Max Warby
01494 689263
max.warby@knightfrank.com

Knight Frank Bucks & Herts
St Mary's Court
Amersham, HP7 0UT

William Furniss
01494 675368
william.furniss@knightfrank.com

Knight Frank Bucks & Herts
St Mary's Court
Amersham, HP7 0UT

knightfrank.co.uk

Your partners in property

1. Particulars: These particulars are not an offer or contract, nor part of one. You should not rely on statements given by Knight Frank in the particulars, by word of mouth or in writing ("information") as being factually accurate about the property, its condition or its value. Neither Knight Frank nor any joint agent has any authority to make any representations about the property, and accordingly any information given is entirely without responsibility on the part of Knight Frank. 2. Material Information: Please note that the material information is provided to Knight Frank by third parties and is provided here as a guide only. While Knight Frank has taken steps to verify this information, we advise you to confirm the details of any such material information prior to any offer being submitted. If we are informed of changes to this information by the seller or another third party, we will use reasonable endeavours to update this as soon as practical. 3. Photos, Videos etc: The photographs, property videos and virtual viewings etc. show only certain parts of the property as they appeared at the time they were taken. Areas, measurements and distances given are approximate only. 4. Regulations etc: Any reference to alterations to, or use of, any part of the property does not mean that any necessary planning, building regulations or other consent has been obtained. A buyer must find out by inspection or in other ways that these matters have been properly dealt with and that all information is correct. 5. Fixtures and fittings: A list of the fitted carpets, curtains, light fittings and other items fixed to the property which are included in the sale (or may be available by separate negotiation) will be provided by the Seller's Solicitors. 6. VAT: The VAT position relating to the property may change without notice. 7. To find out how we process Personal Data, please refer to our Group Privacy Statement and other notices at <https://www.knightfrank.com/legals/privacy-statement>.

Particulars dated May 2025. Photographs and videos dated May 2025. All information is correct at the time of going to print. Knight Frank is the trading name of Knight Frank LLP. Knight Frank LLP is a limited liability partnership registered in England and Wales with registered number OC305934. Our registered office is at 55 Baker Street, London W1U 8AN. We use the term 'partner' to refer to a member of Knight Frank LLP, or an employee or consultant. A list of members names of Knight Frank LLP may be inspected at our registered office. If you do not want us to contact you further about our services then please contact us by either calling 020 3544 0692, email to marketing.help@knightfrank.com or post to our UK Residential Marketing Manager at our registered office (above) providing your name and address.