
LOWNDES

STREET

BELGRAVIA SW1X 9HX



An impressive Grade II listed period house located between Belgrave Square and Cadogan Place

Located on the western side of the street, midway between the junctions of Pont Street and West Halkin Street, this white stucco-fronted Grade II listed house is arranged over lower ground, ground and four upper floors. The house has impressive proportions, being 20'9" / 6.3m wide and almost 37' / 11.2m in depth, with ceiling heights of almost 4m on the ground and first floors. The house is well presented, having been interior designed to a high standard of specification.

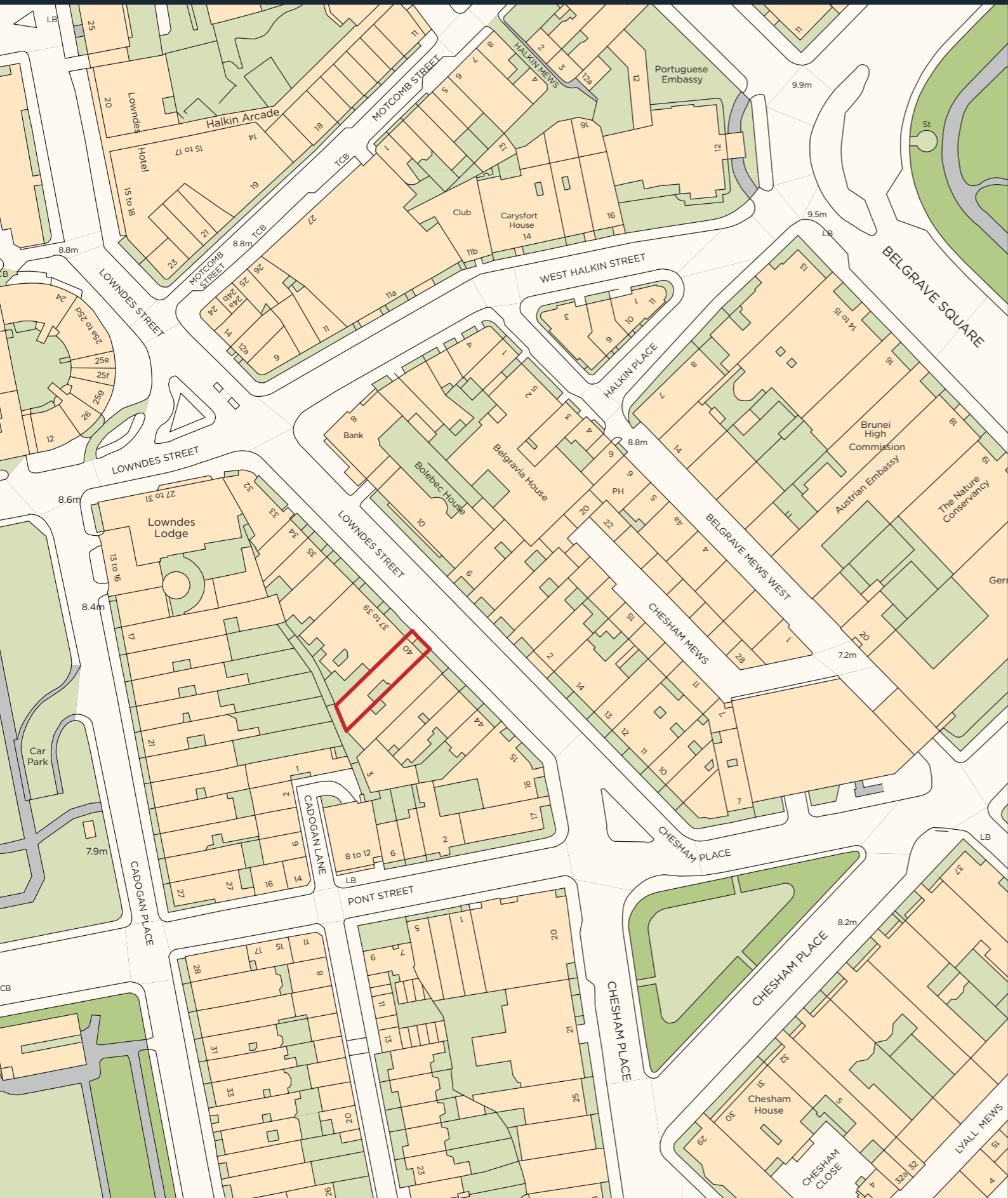








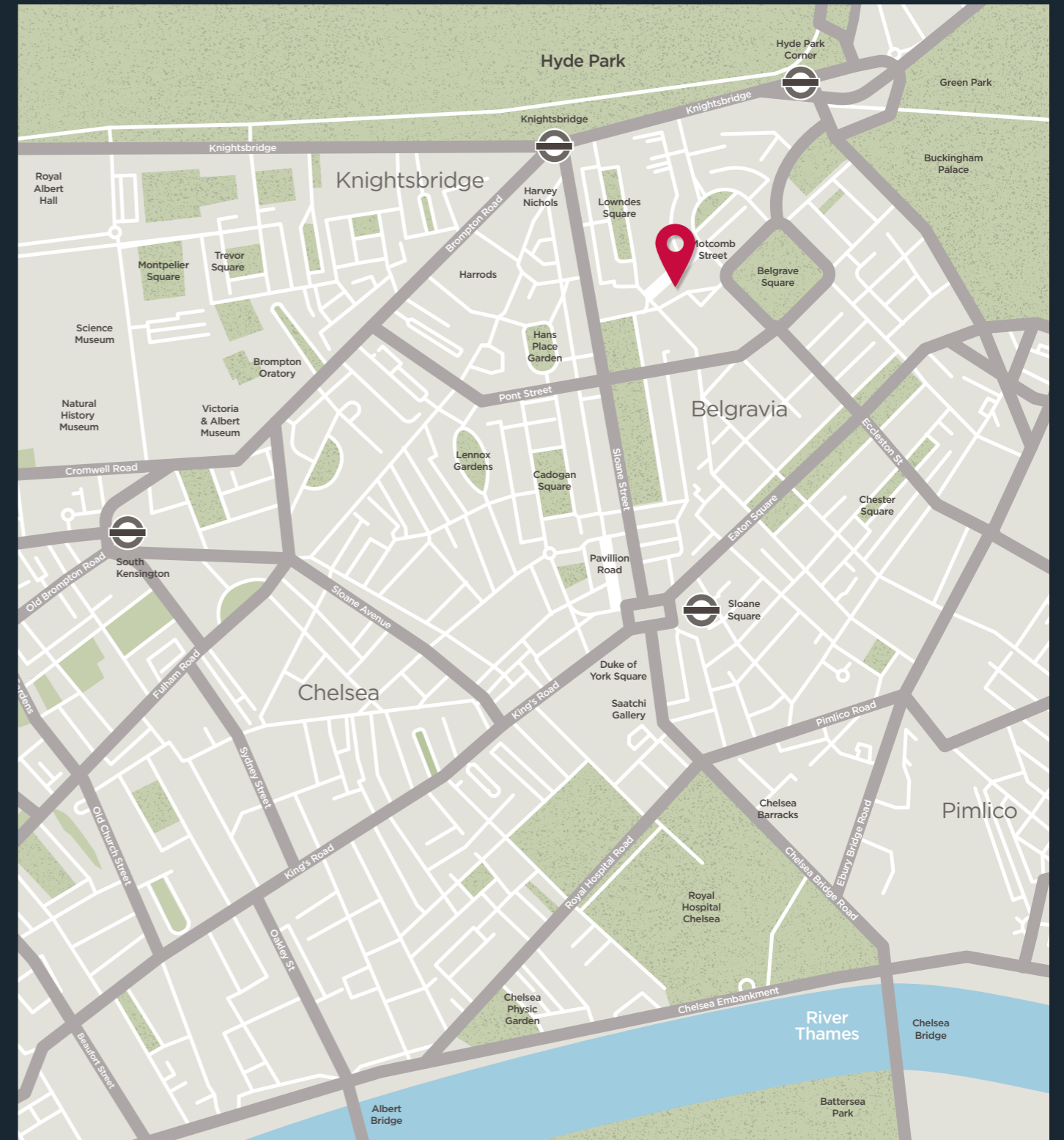




Location

Lowndes Street runs between Lowndes Square and Pont Street, just west of Belgrave Square and east of Cadogan Place, on the borders of Belgravia and Knightsbridge.

The property is convenient for a wide range of shopping, transport and restaurant amenities nearby in Sloane Street and Knightsbridge. The iconic department stores of Harvey Nichols and Harrods are also in close proximity.



Terms

Tenure
Freehold

Price
£16,500,000

Local Authority
The Royal Borough of Kensington & Chelsea

Council Tax
Band H

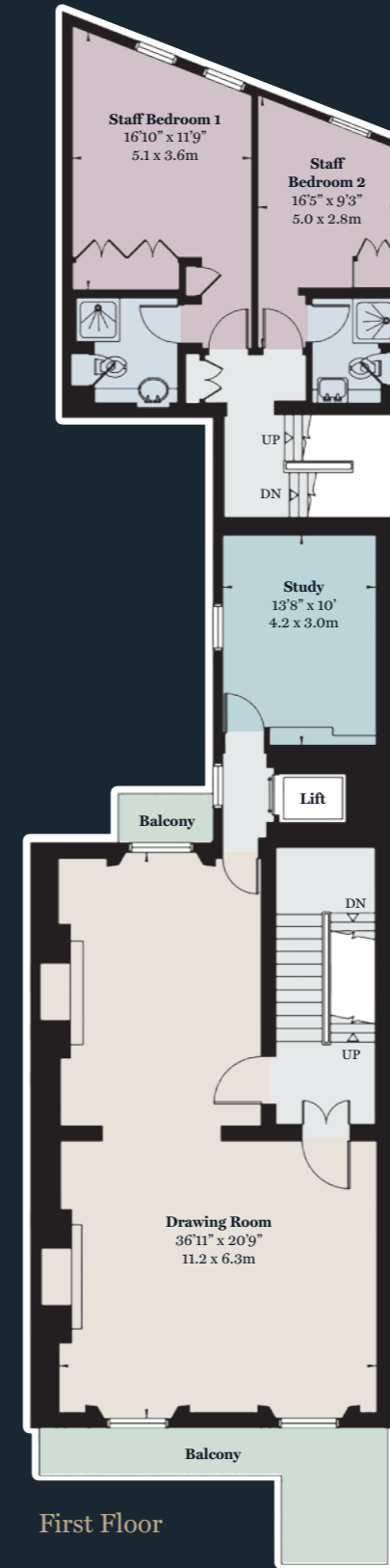
EPC
Rating E

Approximate Gross Internal Area
7,753 sq ft / 720 sq m including vault
7,656 sq ft / 711 sq m excluding vault



Lower Ground Floor

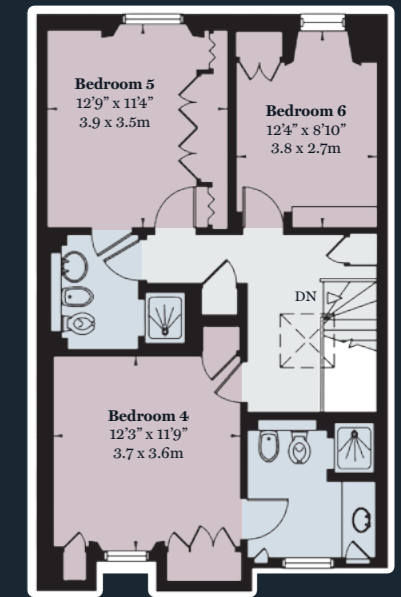
Ground Floor



First Floor

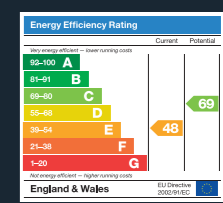


Second Floor



Third Floor

Fourth Floor



Joint Sole Agents



Noel De Keyzer

ndekeyzer@savills.com
020 7824 9044

Savills Knightsbridge

188 Brompton Road
London SW3 1HQ
knightsbridge@savills.com
020 7581 5234

Savills Sloane Street

139 Sloane Street
London SW1X 9AY
sloanestreet@savills.com
020 7730 0822

savills.co.uk



**Knight Frank Belgravia
& Westminster**

47 Lower Belgrave Street
London SW1W 0LSw
belgravia@knightfrank.com
020 7881 7722

knightfrank.co.uk

Viewing: Strictly by appointment with Savills or Knight Frank. Important notice: Savills, their clients and any joint agents give notice that: 1. They are not authorised to make or give any representations or warranties in relation to the property either here or elsewhere, either on their own behalf or on behalf of their client or otherwise. They assume no responsibility for any statement that may be made in these particulars. These particulars do not form part of any offer or contract and must not be relied upon as statements or representations of fact. 2. Any areas, measurements or distances are approximate. The text, photographs and plans are for guidance only and are not necessarily comprehensive. It should not be assumed that the property has all necessary planning, building regulation or other consents and Savills have not tested any services, equipment or facilities. Purchasers must satisfy themselves by inspection or otherwise. 24/05/23 SAVILLS-230519-02MS
