



Rembrandt Close, London **SW1W**

Rembrandt Close, London **SW1W**

Rembrandt Close is a quiet Grosvenor managed mews located moments away from Sloane Square. This house offers spacious and flexible accommodation over four floors along with the added bonus of a separate garage and South West facing roof terrace. The ground floor comprises an open reception room with the kitchen. The first and second floors provide four bedrooms and two bathrooms. The third floor is occupied by a studio-style reception room.



Guide price: £2,250,000

Tenure: Available freehold

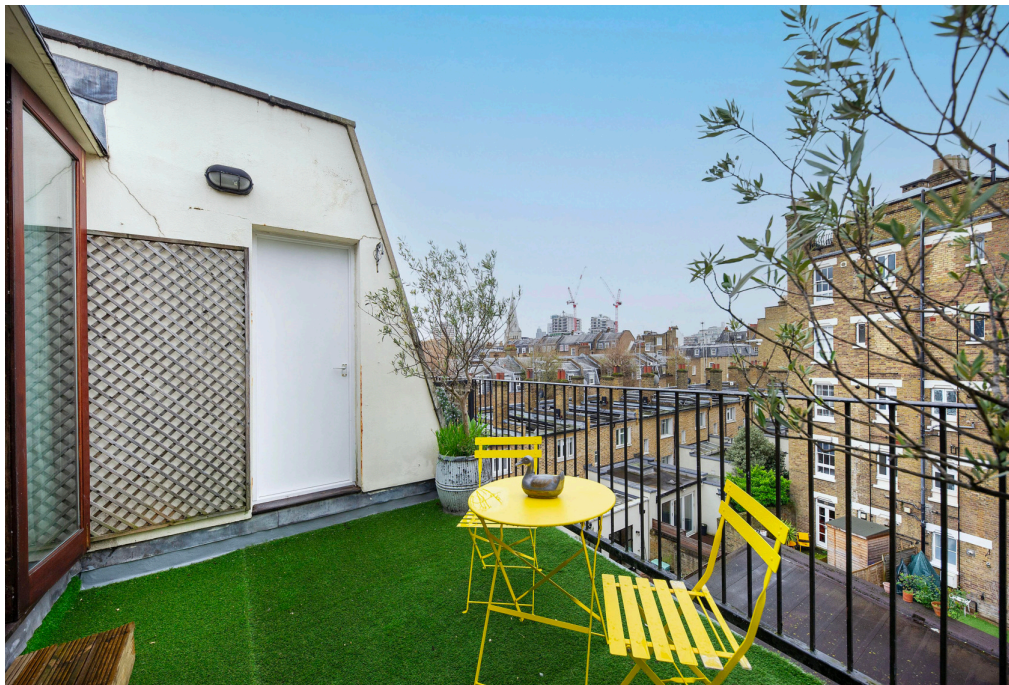
Service charge: £700 per annum for the upkeep of the Mews. Not reviewed.

Local authority: City of Westminster

Council tax band: G



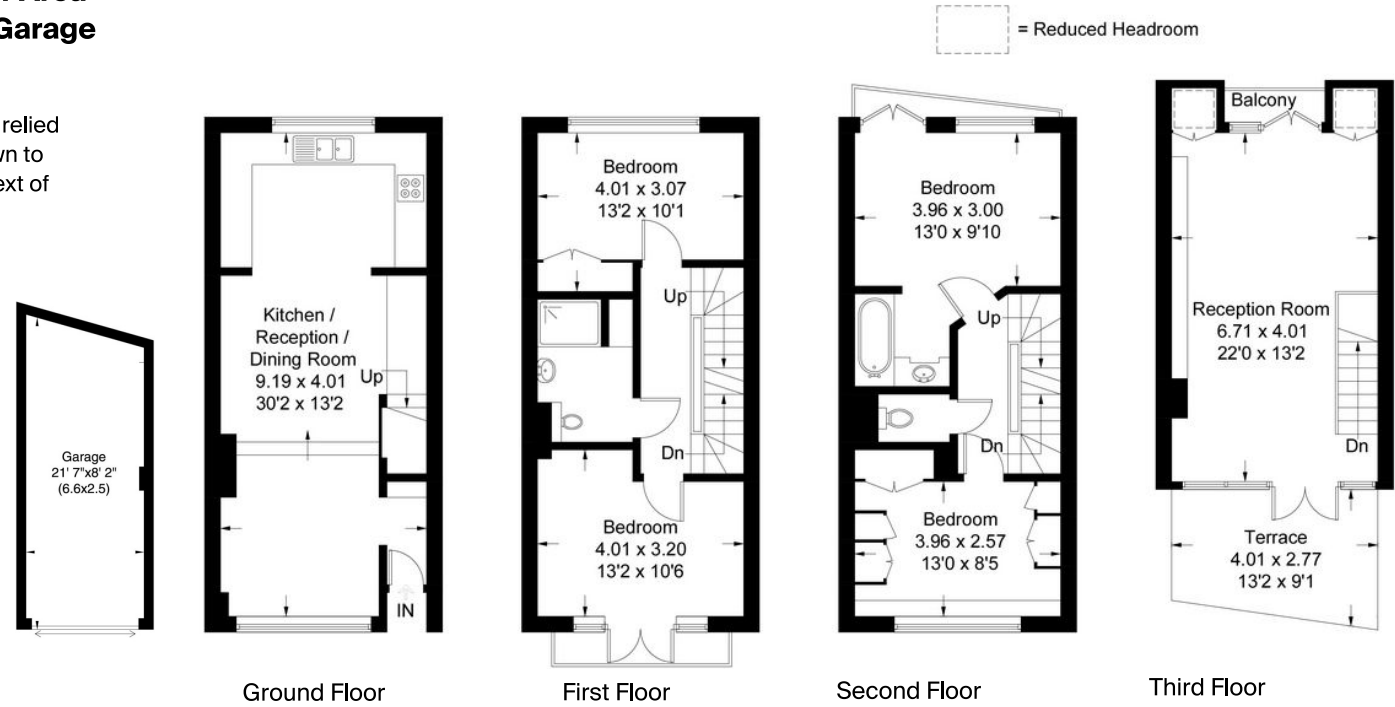
Rembrandt Close is a fantastic location as it offers east access to the exclusive collection of shops, restaurants and is within close walking distance to Sloane Square and Orange Square at the lower end of Bourne Street.



Rembrandt Close, SW1W

**Approximate Gross Internal Floor Area
150.8 sq m / 1624 sq ft Including Garage**

This plan is for guidance only and must not be relied upon as a statement of fact. Attention is drawn to the important notice on the last page of the text of the Particulars.



Knight Frank
Belgravia Sales
47 Lower Belgrave Street
SW1W 0LS

We would be delighted to tell you more
Chris Mulry
+44 20 7881 7727
chris.mulry@knightfrank.com

[knightfrank.co.uk](https://www.knightfrank.co.uk)



Fixtures and fittings: A list of the fitted carpets, curtains, light fittings and other items fixed to the property which are included in the sale (or may be available by separate negotiation) will be provided by the Seller's Solicitors.
Important Notice: 1. Particulars: These particulars are not an offer or contract, nor part of one. You should not rely on statements by Knight Frank LLP in the particulars or by word of mouth or in writing ("information") as being factually accurate about the property, its condition or its value. Neither Knight Frank LLP nor any joint agent has any authority to make any representations about the property, and accordingly any information given is entirely without responsibility on the part of the agents, seller(s) or lessor(s). 2. Photos, Videos etc: The photographs, property videos and virtual viewings etc. show only certain parts of the property as they appeared at the time they were taken. Areas, measurements and distances given are approximate only. 3. Regulations etc: Any reference to alterations to, or use of, any part of the property does not mean that any necessary planning, building regulations or other consent has been obtained. A buyer or lessee must find out by inspection or in other ways that these matters have been properly dealt with and that all information is correct. 4. VAT: The VAT position relating to the property may change without notice. 5. To find out how we process Personal Data, please refer to our Group Privacy Statement and other notices at <https://www.knightfrank.com/legals/privacy-statement>. Particulars dated March 2024. Photographs and videos dated March 2024.
All information is correct at the time of going to print. Knight Frank is the trading name of Knight Frank LLP. Knight Frank LLP is a limited liability partnership registered in England and Wales with registered number OC305934. Our registered office is at 55 Baker Street, London W1U 8AN. We use the term 'partner' to refer to a member of Knight Frank LLP, or an employee or consultant. A list of members names of Knight Frank LLP may be inspected at our registered office. If you do not want us to contact you further about our services then please contact us by either calling 020 3544 0692, email to marketing.help@knightfrank.com or post to our UK Residential Marketing Manager at our registered office (above) providing your name and address.