



Shafto Mews, London **SW1X**



Shafto Mews, London **SW1X**

Recently rebuilt and refurbished to an exceptional standard, this attractive house is located in a prime position in Knightsbridge, just off Cadogan Square, close to Sloane Square and Knightsbridge.



Guide price: £9,250,000

Tenure: Freehold

Local authority: Royal Borough of Kensington and Chelsea

Council tax band: H



Property Description

Having been recently refurbished, this Mews House benefits from all the modern touches you would expect including underfloor heating, air conditioning, automated lighting and integrated audio-visual systems.

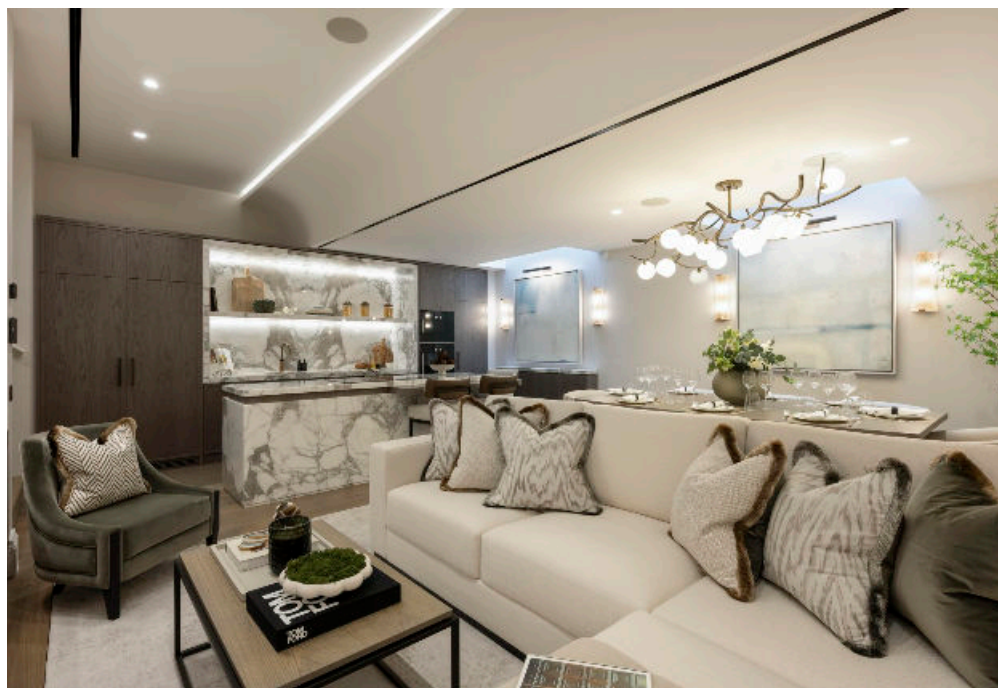
Covering approximately 2,917 square feet (excluding storage areas) accommodation comprises a reception room on the ground floor with a large kitchen/dining room and a cinema room in the basement.

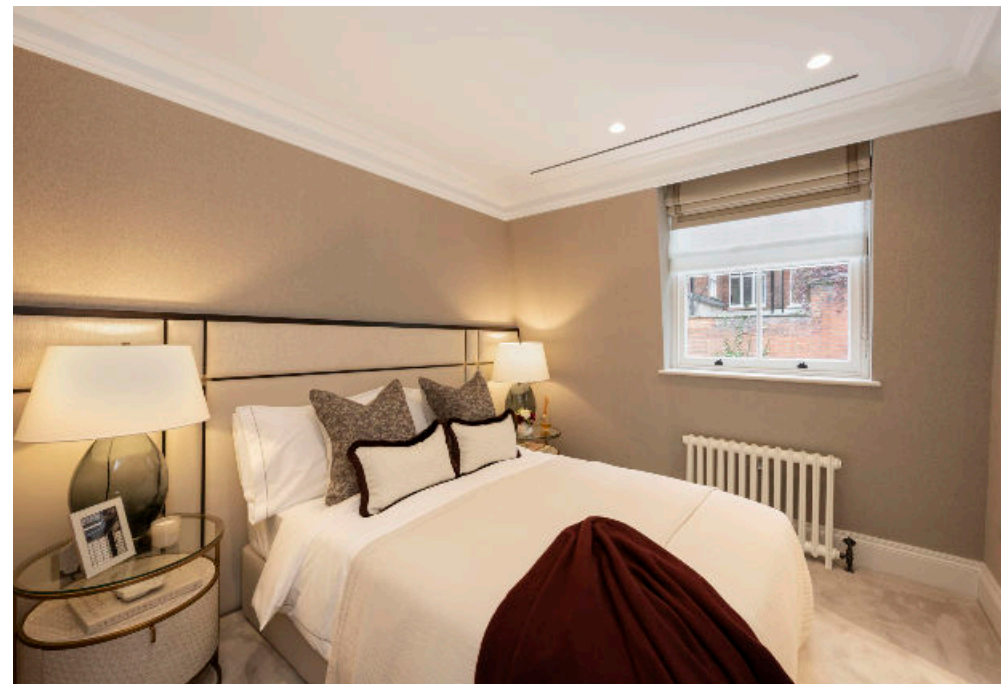
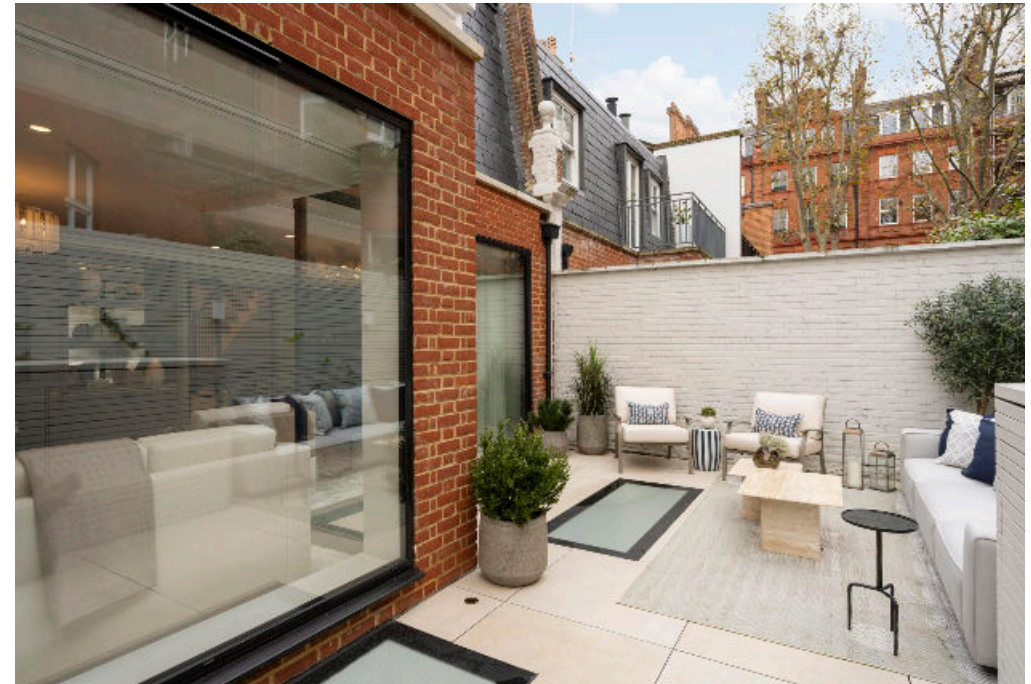
The principle bedroom suite is on the first floor with 2 further bedroom suites. There is a separate utility room, guest cloakroom and secure garage.

The mews is particularly quiet with no passing traffic, and consequently it is very quiet particularly in the private South facing garden which is accessed from the ground floor reception room.

Location description

Shafto Mews is a very quiet 'Cul-de-Sac' Mews in Knightsbridge, running between Pont Street and Cadogan Square. Both Knightsbridge and Sloane Square are within easy reach as is Hyde Park; this is a very quiet address but only moments away from some of the most famous locations found in Prime Central London.





Attractive property
in a desirable
location

Shafto Mews, London, SW1

Approximate Gross Internal Floor Area
270.99 sq m / 2917 sq ft (excluding Eaves)

Eaves Storage Area
21.37 sq m / 230 sq ft

Total Approximate Gross Internal Area
292.36 sq m 3147 sq ft

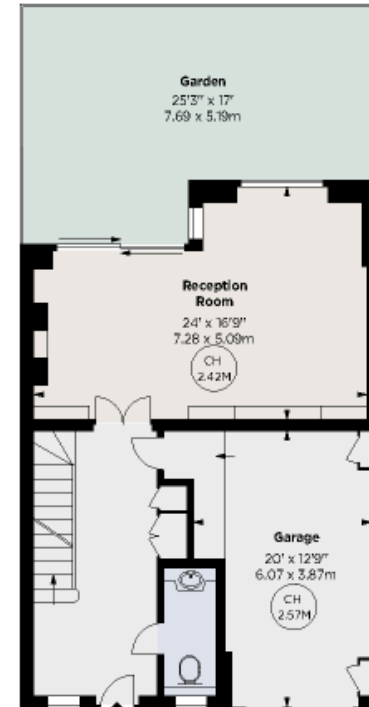
This plan is for guidance only and must not be relied upon as a statement of fact. Attention is drawn to the important notice on the last page of the text of the Particulars.

This floorplan is for GUIDANCE ONLY and NOT FOR VALUATION purposes.

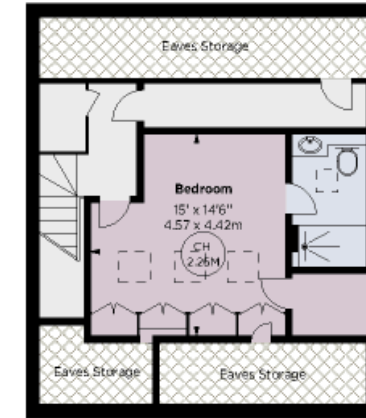
Key :
 CH - Ceiling Height
 - Eaves Storage



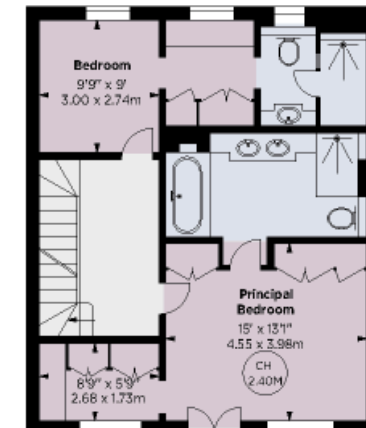
LOWER GROUND FLOOR



GROUND FLOOR



SECOND FLOOR



FIRST FLOOR



Knight Frank

Belgravia Sales

47 Lower Belgrave Street

London

SW1W 0LS

knightfrank.co.uk

We would be delighted to tell you more

Matthew Armstrong

020 7881 7728

matthew.armstrong@knightfrank.com



Fixtures and fittings: A list of the fitted carpets, curtains, light fittings and other items fixed to the property which are included in the sale (or may be available by separate negotiation) will be provided by the Seller's Solicitors.

Important Notice: 1. Particulars: These particulars are not an offer or contract, nor part of one. You should not rely on statements by Knight Frank LLP in the particulars or by word of mouth or in writing ("information") as being factually accurate about the property, its condition or its value. Neither Knight Frank LLP nor any joint agent has any authority to make any representations about the property, and accordingly any information given is entirely without responsibility on the part of the agents, seller(s) or lessor(s). 2. Photos, Videos etc: The photographs, property videos and virtual viewings etc. show only certain parts of the property as they appeared at the time they were taken. Areas, measurements and distances given are approximate only. 3. Regulations etc: Any reference to alterations to, or use of, any part of the property does not mean that any necessary planning, building regulations or other consent has been obtained. A buyer or lessee must find out by inspection or in other ways that these matters have been properly dealt with and that all information is correct. 4. VAT: The VAT position relating to the property may change without notice. 5. To find out how we process Personal Data, please refer to our Group Privacy Statement and other notices at <https://www.knightfrank.com/legals/privacy-statement>.

Particulars dated November 2024. Photographs and videos dated October 2024.

Knight Frank is the trading name of Knight Frank LLP. Knight Frank LLP is a limited liability partnership registered in England and Wales with registered number OC305934. Our registered office is at 55 Baker Street, London W1U 8AN where you may look at a list of members' names. If we use the term 'partner' when referring to one of our representatives, that person will either be a member, employee, worker or consultant of Knight Frank LLP and not a partner in a partnership. If you do not want us to contact you further about our services then please contact us by either calling 020 3544 0692, email to marketing.help@knightfrank.com or post to our UK Residential Marketing Manager at our registered office (above) providing your name and address.