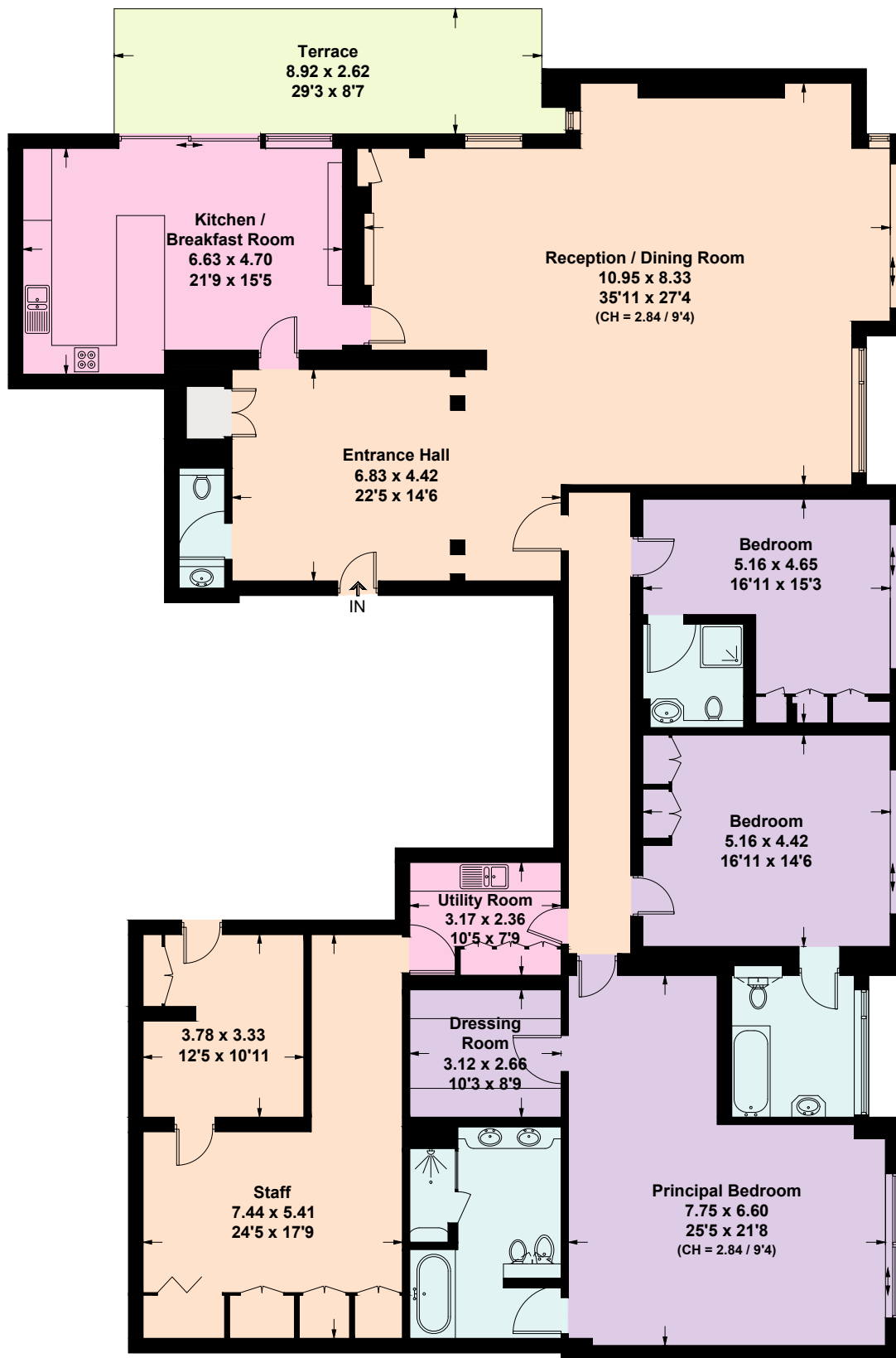


# Montrose Place, SW1X

Approximate Area = 3655 sq ft / 339.6 sq m  
(Including Limited Use Area = 35 sq ft / 3.3 sq m)



**Ground Floor**

This plan is for layout guidance only. Not drawn to scale unless stated. Windows and door openings are approximate. Whilst every care is taken in the preparation of this plan, please check all dimensions, shapes and compass bearings before making any decisions reliant upon them. (ID1054215)