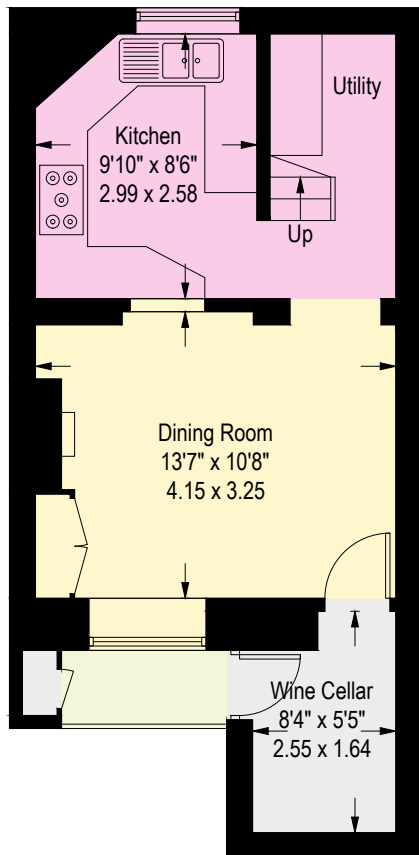
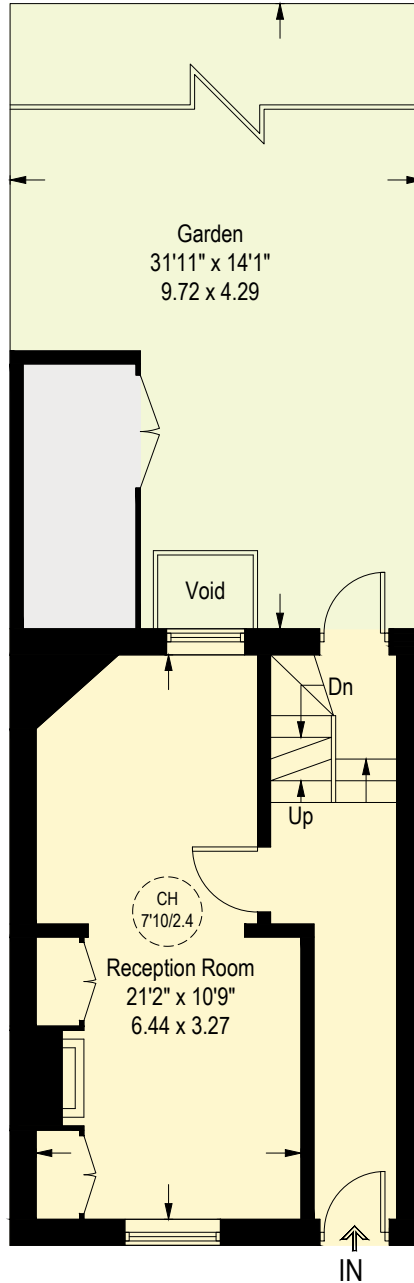


Maunsel Street, London, SW1P

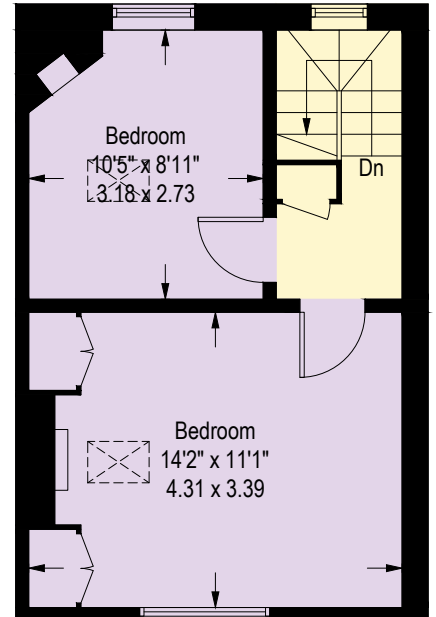
Approximate Gross Internal Area
 Lower Ground Floor = 335 sq ft / 31.1 sq m
 Ground Floor = 288 sq ft / 26.8 sq m
 First Floor = 294 sq ft / 27.3 sq m
 Second Floor = 302 sq ft / 28.1 sq m
 Total = 1219 sq ft / 113.3 sq m
 (Excluding External Cupboard)



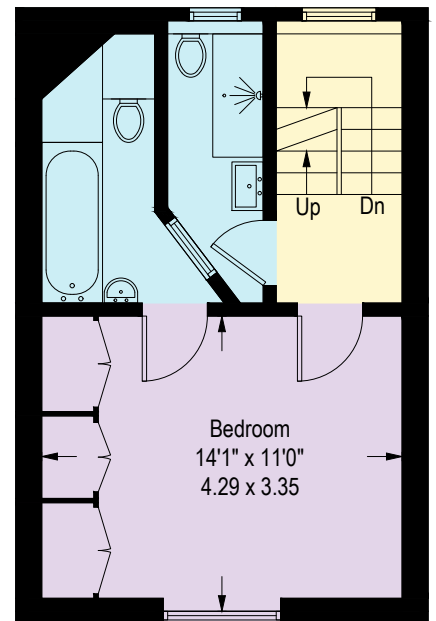
Lower Ground Floor



Ground Floor



Second Floor



First Floor

Illustration for identification purposes only,
 measurements are approximate, not to scale. (ID1196301)