

WE ARE
200,000 SQ FT OF
EXCEPTIONAL
GRADE A OFFICE SPACE
ARRANGED OVER
10 FLOORS

ONE

COLMORE SQUARE



WE ARE...



IN THE HEART OF BIRMINGHAM'S BUSINESS DISTRICT

SPACE TO FEEL INSPIRED

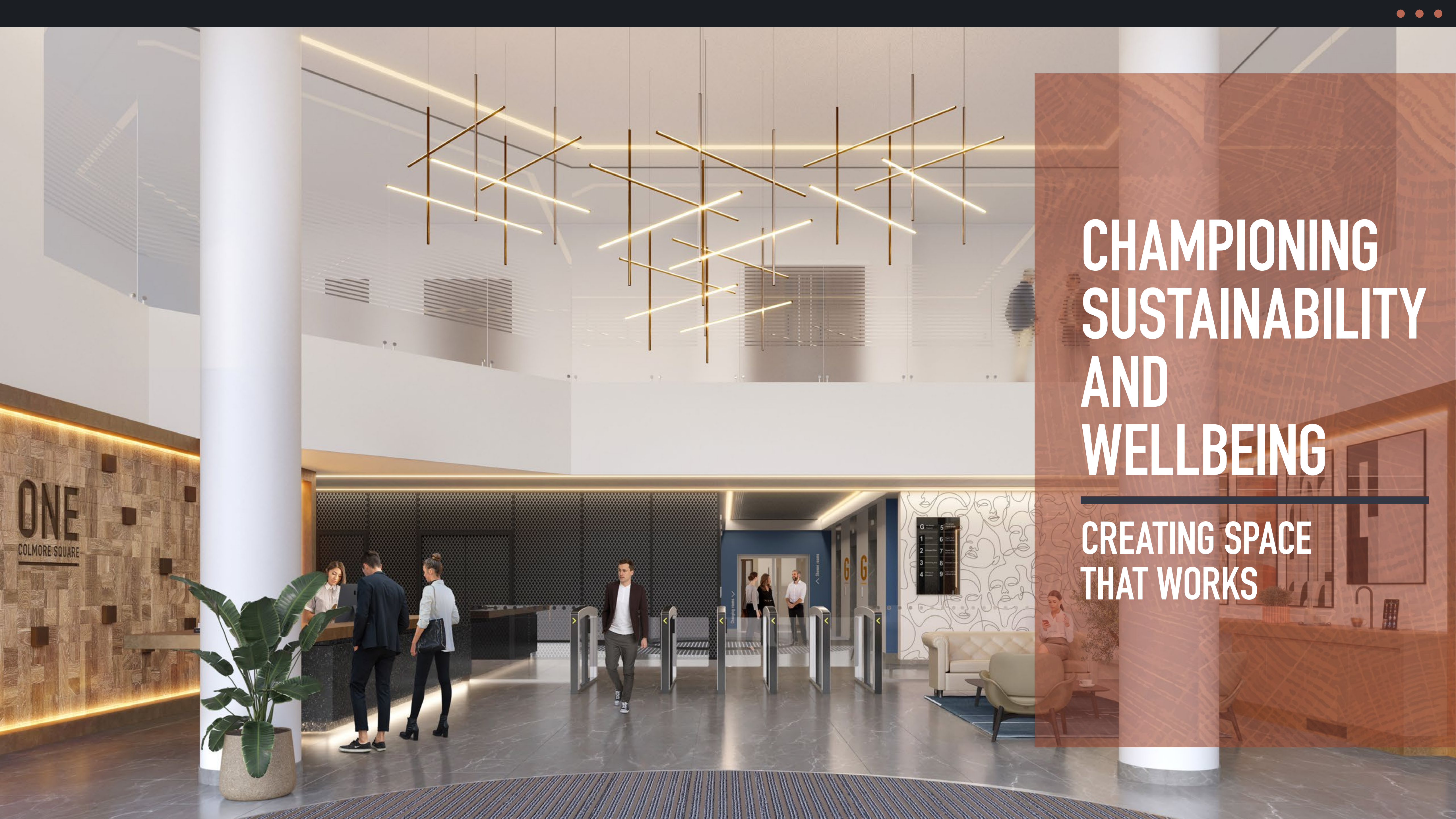
200,000 SQ FT OF
GRADE A OFFICE SPACE
ARRANGED OVER
10 FLOORS





BIRMINGHAM

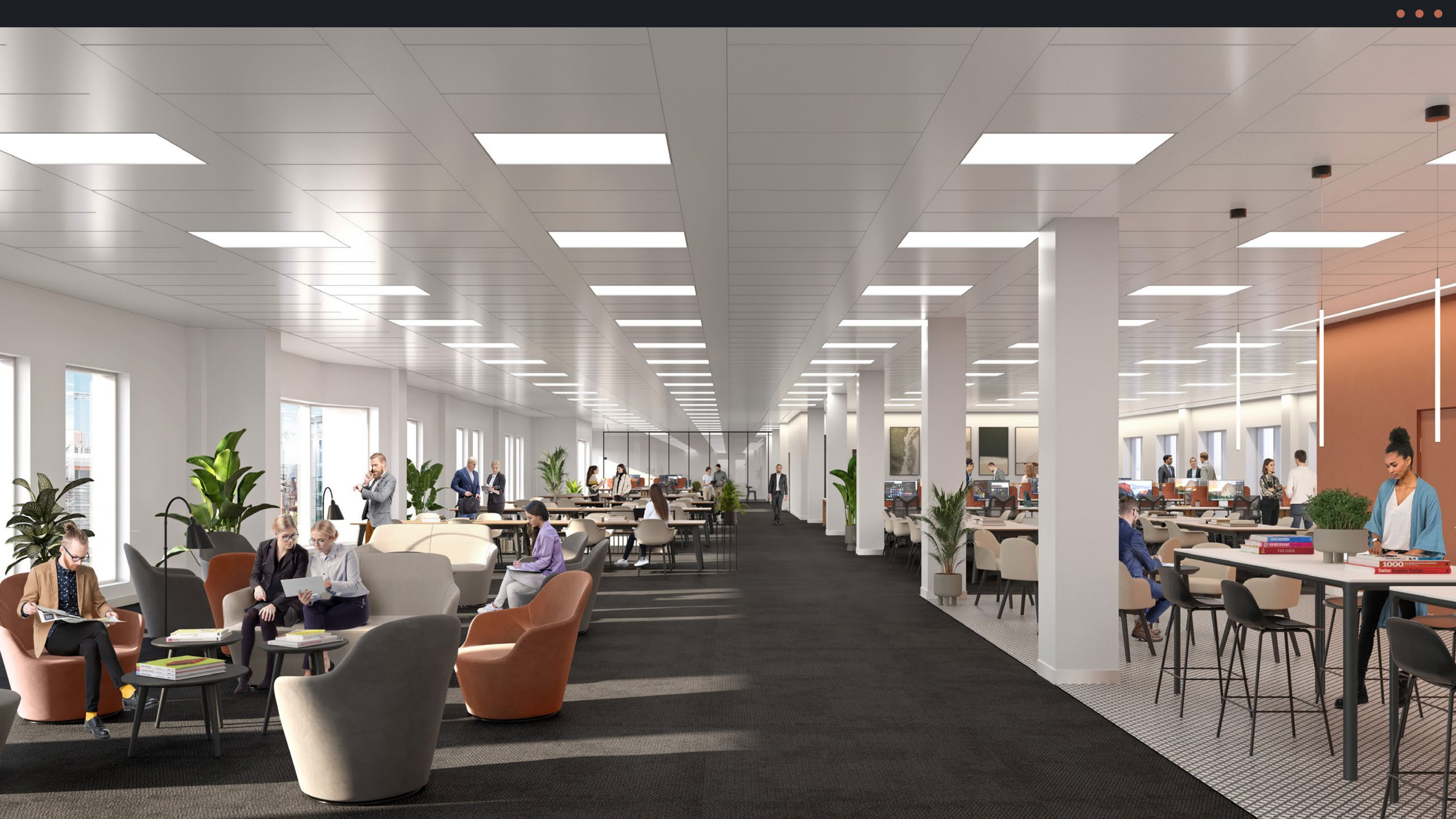
AND PROUD



ONE
COLMORE SQUARE

CHAMPIONING SUSTAINABILITY AND WELLBEING

CREATING SPACE
THAT WORKS

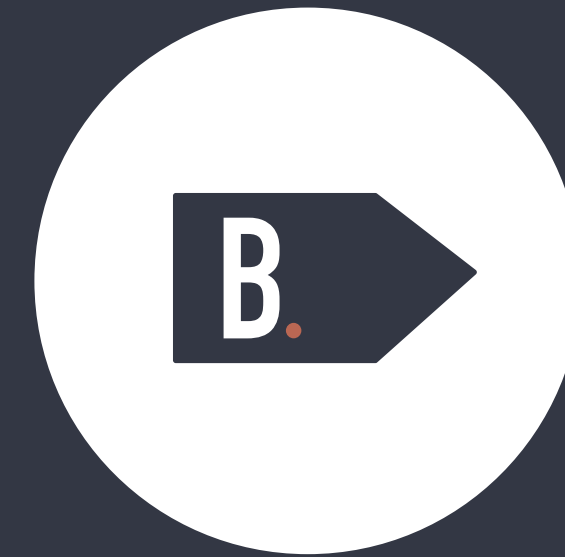


THINKING ABOUT THE FUTURE

YOURS AND OURS



WIRED SCORE
PLATINUM



EPC RATING



CONCIERGE



SPECIFICATION
GRADE A



BREEAM
VERY GOOD



BUILDING APP

BICYCLE FRIENDLY

FOR EVERY KIND OF CYCLIST

100 LOCKERS
11 SHOWERS WITH CHANGING AREAS
1 COMMUNAL CHANGING ROOM
80 BIKE SPACES





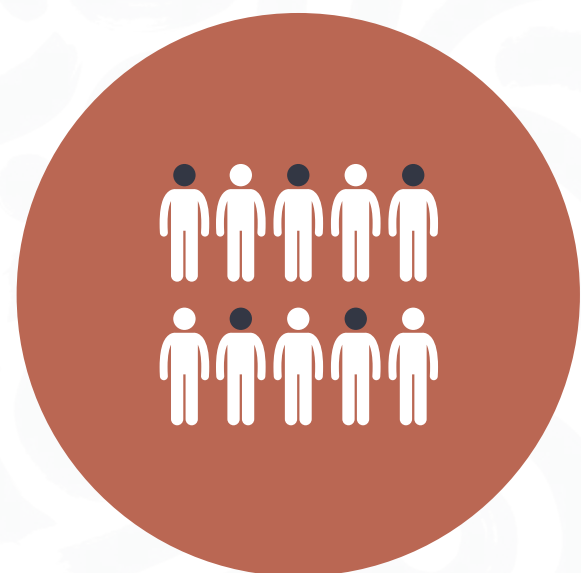
**SHOWER &
CHANGING
FACILITIES**



**AIR
CONDITIONING**



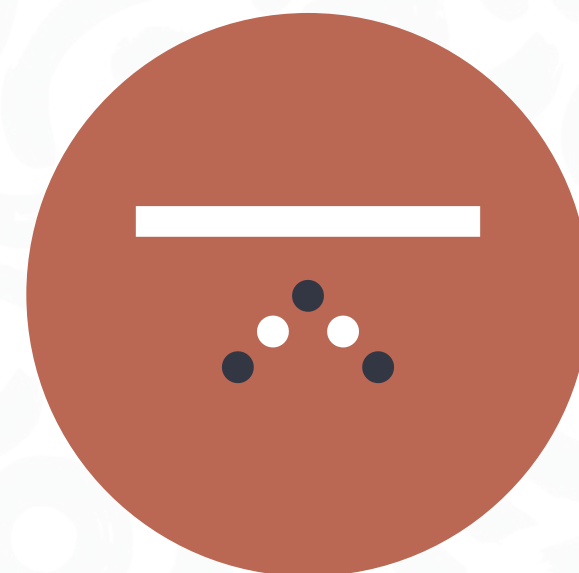
**LED
LIGHTING**



**DESIGN
DENSITY
1:10**



**24/7
SECURITY
& ACCESS**



**RAISED
ACCESS
FLOORS**



**SECURE
ENTRANCE**



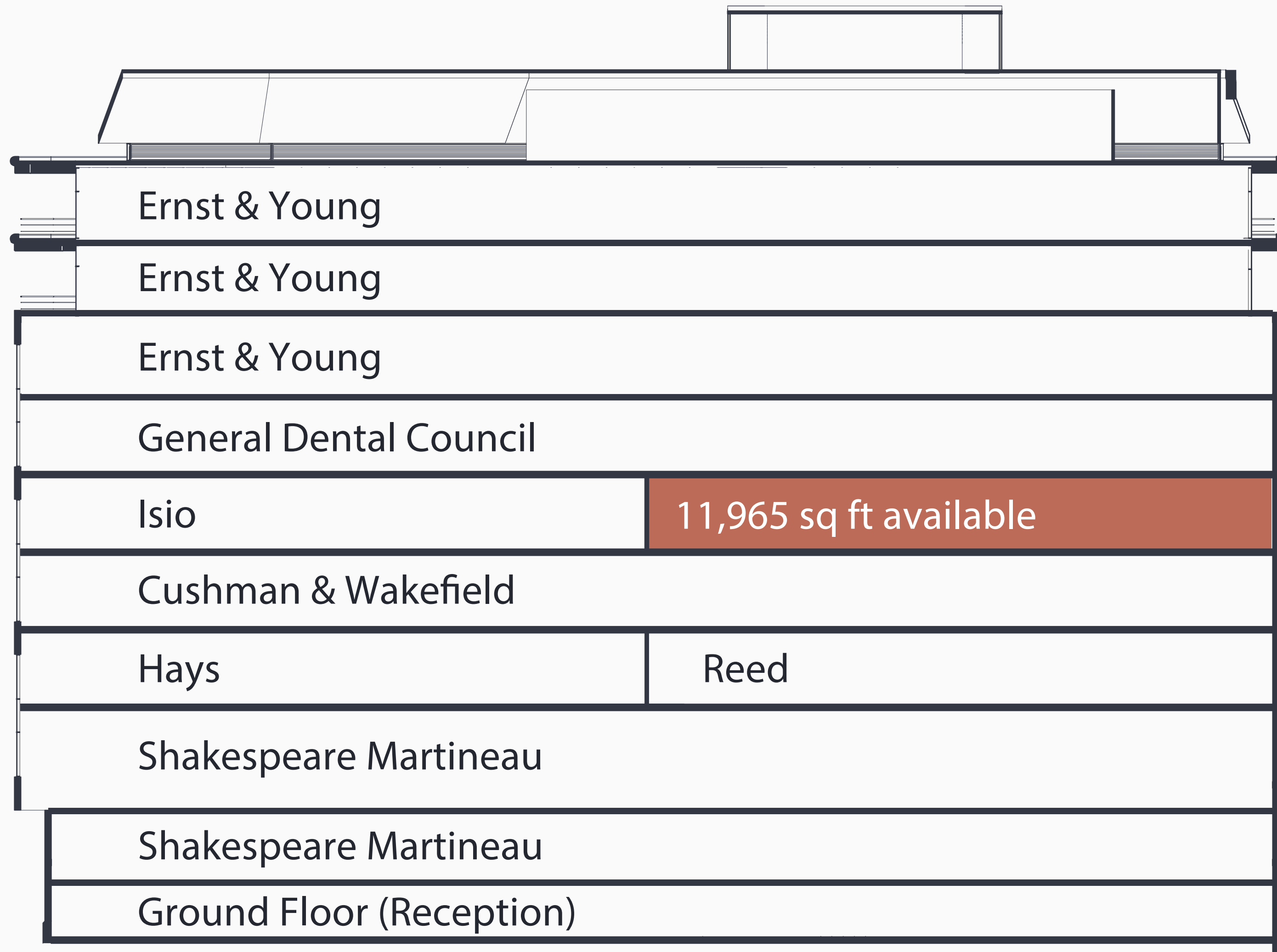
**PARKING
RATIO
1:1,500**



**CAFÉ /
RESTAURANT**

**CARING
ABOUT THE
DETAILS**

**MEANS A BETTER END
OF JOURNEY EXPERIENCE**



**WE HAVE
11,965 SQ FT
AVAILABLE**

**ON THE FIFTH FLOOR
WITH GREAT VIEWS
AND SPACE TO
COLLABORATE**



11,965 SQ FT

- 4 pipe fan coil air conditioning
- Suspended metal tile ceiling
- Recessed LED lighting
- Fully access raised floors
- 2.75m floor-to-ceiling
- Floor-to-ceiling glazing
- 6 x passenger lifts
- 1 x goods lift
- Male/Female WCs
- 1 x DDA compliant WC



5TH FLOOR



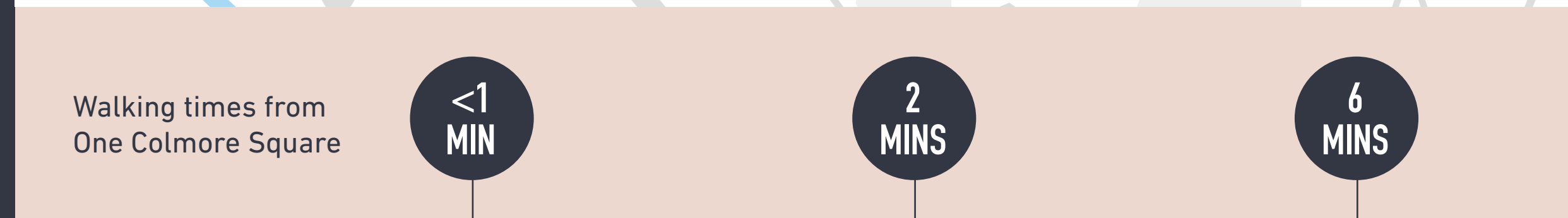
INDICATIVE FIT OUT



- 1 feature reception area
- 1 x 10 person meeting room
- 1 x 12 person board room (with flex to 20+ person)
- 3 x 8 person meeting rooms
- 4 x Zoom booths
- 4 x phone booths
- Feature kitchen and breakout space
- 2 x agile working zones
- 4 x informal/collaboration zones
- 76 x open plan working

ONLY A SHORT WALK AWAY

FROM ALL OF YOUR FAVOURITE SHOPS, RESTAURANTS & BARS



Walking times from One Colmore Square

<1 MIN

2 MINS

6 MINS

BULL STREET METRO

SNOW HILL STATION

NEW STREET STATION

Train Stations
Metro Stations

Tram Line
Reach in 5 mins

ONE
COLMORE SQUARE

CAFÉS & BARS

- 1 Waylands Yard
- 7 Albert Schloss
- 2 Pineapple Club
- 8 Pure Bar
- 3 Loki
- 9 The Roebuck
- 4 Morridge Oats + Coffee
- 10 Boston Tea Party
- 5 Henman & Cooper
- 11 Tonight Josephine
- 6 The Colmore
- 12 Yorks Café
- 13 Bonehead

RESTAURANTS

- 1 Tattu
- 10 Otto
- 2 Isaacs
- 11 Indian Brewery
- 3 Gaucho
- 12 Lasan
- 4 Asha's
- 13 Hen & Chickens
- 5 Land Restaurant
- 14 Pasta Di Piazza
- 6 Sushi Passion
- 15 Gusto
- 7 Folium
- 16 Fazenda
- 8 Opheem
- 17 Original Patty Men
- 9 Tierra Tacos

HOTELS

- 1 The Grand
- 4 The Hyatt
- 2 Hotel Du Vin
- 5 St Pauls House
- 3 Burlington Hotel

OCCUPIERS

- 1 Amey
- 5 HS2, Gowling WLG
- 2 Barclays, KPMG
- 6 PwC
- 3 BT
- 7 Grant Thornton
- 4 EY, Shakespeare Martineau
- 8 Investec
- 9 Rathbone IM

VIBRANT AND CULTURED

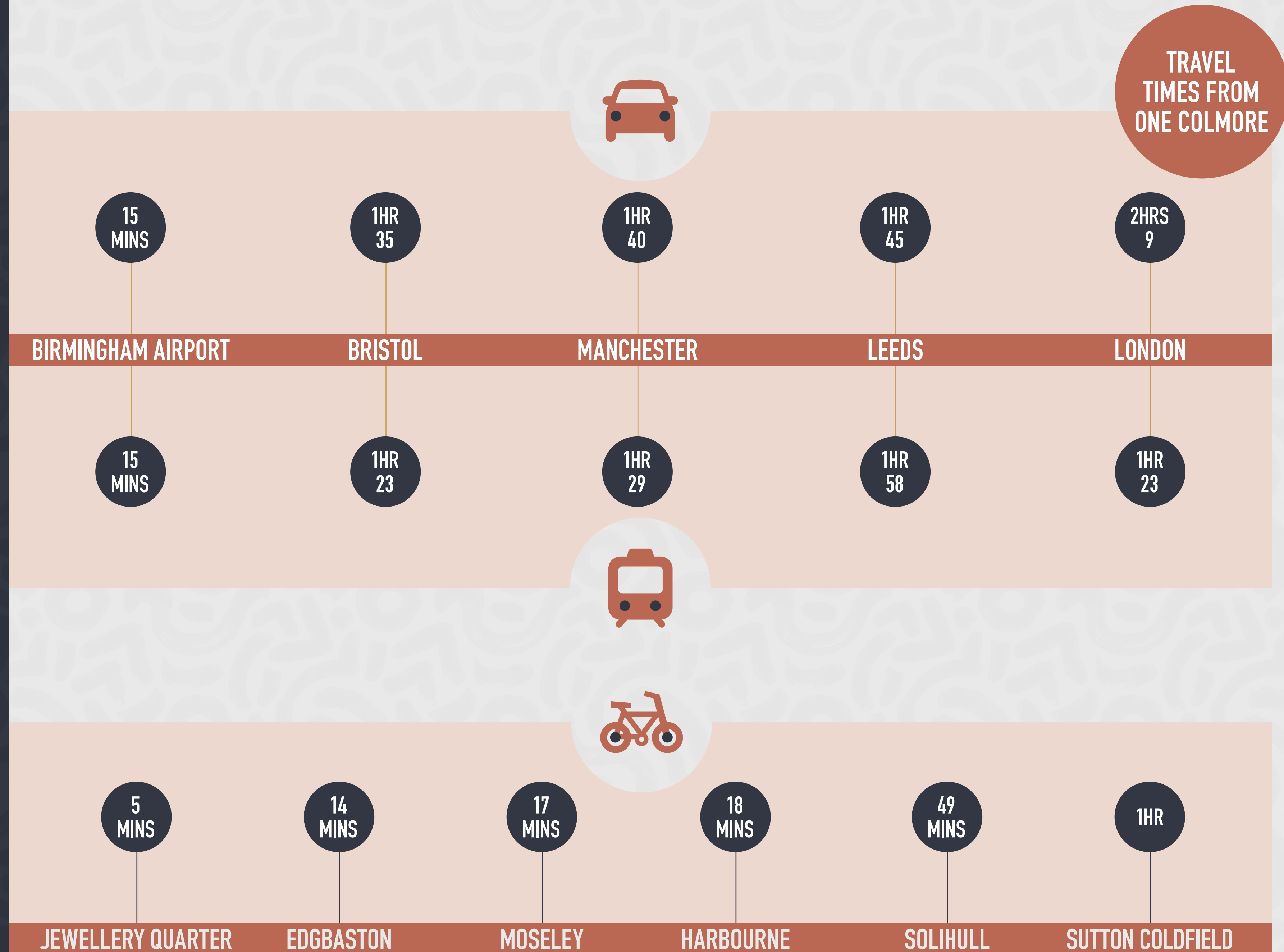


Birmingham has a rich cultural offering from independent boutiques to performing arts at Birmingham's Hippodrome, the magnificence of the Library of Birmingham or retail therapy in the form of Selfridges and Harvey Nichols.

Whether you want a quick bite to eat and an artisan coffee or a sit down meal at a Michelin starred restaurant and a few cocktails after work, One Colmore Square is well situated for occupiers to benefit from this vast array of high quality amenities.

NATIONALLY AND LOCALLY CONNECTED

MORE OPTIONS TO GET
HERE (AND HOME AGAIN)





1.3M
UNDER 25S
LIVING
IN THE REGION



150+
GLOBAL FLIGHTS
FROM BIRMINGHAM
AIRPORT



25.5%
WEST MIDLANDS
GROWTH RATE OVER
THE LAST FIVE YEARS



90%
UK POPULATION
LESS THAN FOUR
HOURS AWAY



8
UNIVERSITIES
WITH 55,000
GRADUATES



13,500
LIFE SCIENCES
COMPANIES



6,700
MEDICAL
GRADUATES
A YEAR



13,900
TECH COMPANIES
IN BIRMINGHAM



#1
THE LARGEST TECH
CENTRE OUTSIDE
OF LONDON

SURROUNDED BY TALENT

LOOKING TO THE FUTURE WITH A THRIVING & VIBRANT DEMOGRAPHIC

Birmingham is currently experiencing an unprecedented period of change as billions of pounds in investment transforms the city's economy. Business is booming, with the fastest growth in business numbers in the country, the highest number of employees of any city outside London and more jobs created from foreign direct investment than any other region. Birmingham is a truly international city, at the centre of a successful region and a driving force of the UK.

WE ARE ONE

COLMORE SQUARE



WANT TO FIND
OUT MORE?
GET IN TOUCH WITH
ONE OF OUR AGENTS.

CBRE

William Ventham
+44 (0)121 616 5509
+44 (0)7786 236090
william.ventham@cbre.com

Theo Holmes
+44 (0)121 616 5510
+44 (0)7967 802656
theo.holmes@cbre.com

 **Knight
Frank**

Jamie Phillips
+44 (0)121 233 6403
+44 (0)7900 324900
jamie.phillips@knightfrank.com

Will Higgins
+44 (0)121 233 6448
+44 (0)7811 849288
william.higgins@knightfrank.com


Oval

ONECOLMORE.CO.UK

Misrepresentation Act: CBRE and Knight Frank for themselves and for the vendors or lessors of this property, whose agents give notice that: a) all particulars are set out as general outline only for the guidance of intending purchasers or lessees, and do not comprise part of an offer or contract: b) all descriptions, dimensions, references to condition and necessary permissions for use and occupation, and other details are given in good faith and are believed to be correct but any intending purchasers or tenants should not rely on them as statements or representations of fact but must satisfy themselves by inspection or otherwise as to the correctness of each of them. c) no person in the employment of CBRE or Knight Frank has any authority to make any representation of warranty whatsoever in relation to this property.

November 2022. S013532. **siren** | +44 (0)20 7478 8300 | sirendesign.co.uk