

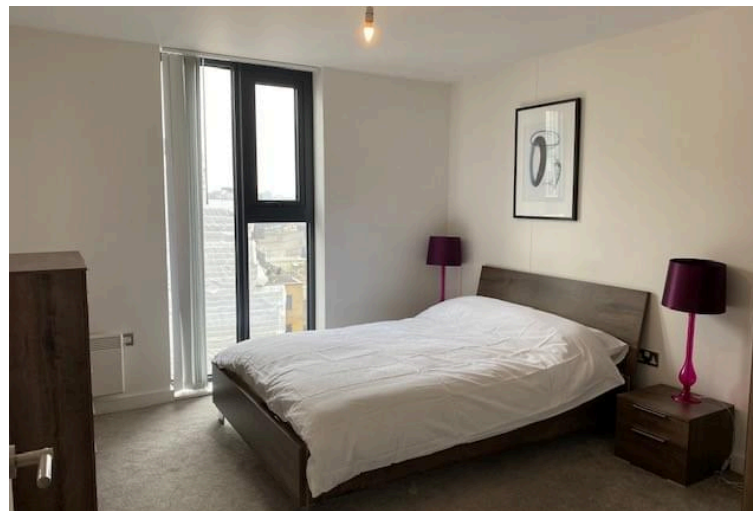
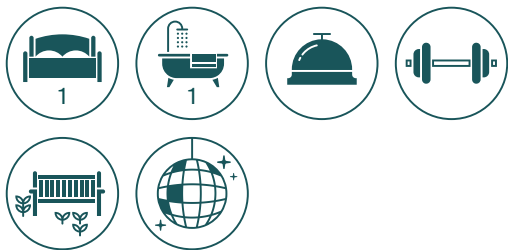
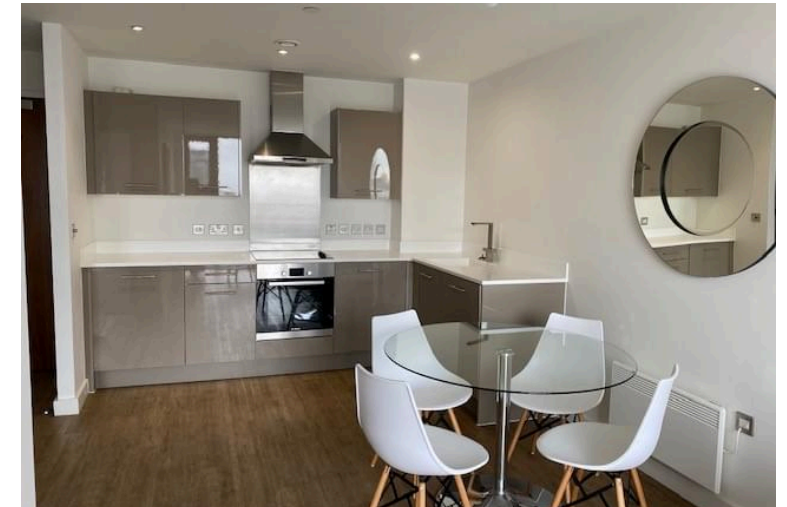
**Apartment 121,  
The Bank,  
Birmingham.  
Price £202,500**



Located on the 14th floor, this superb, high specification apartment benefits from open plan kitchen/lounge, spacious double bedroom and bathroom, boasting fantastic views cross the city.

This luxury apartment is set within the very popular Bank development, standing tall at 21 storey's, offering stunning, picturesque views of the city and extensive canal network.

Each apartment benefits from its prime position in the city centre, with large, floor to ceiling windows which enable a wide view of the city, whilst drawing light into the property. Added to this, each apartment has a vibrant style with chrome and gloss finishes, with designer kitchens and bathrooms offering a contemporary design.



*The Bank is located on Broad Street, Birmingham close to the National Indoor Arena, the new Birmingham library, the ICC, Symphony Hall and Victoria Square.*

*Arena Central including HSBC's national head quarters will be approximately 300 metres walking distance.*

*The location provides easy access to all areas of the city and to the motorway network.*

# Apartment

- Open plan kitchen, living room and dining room
- Spacious double bedroom
- Contemporary bathroom with designer features
- Built-in storage
- Large living room window allowing light to flood in
- Approximately 250 year lease
- Service charge £2.79 sq ft
- Ground rent £350.00 per annum

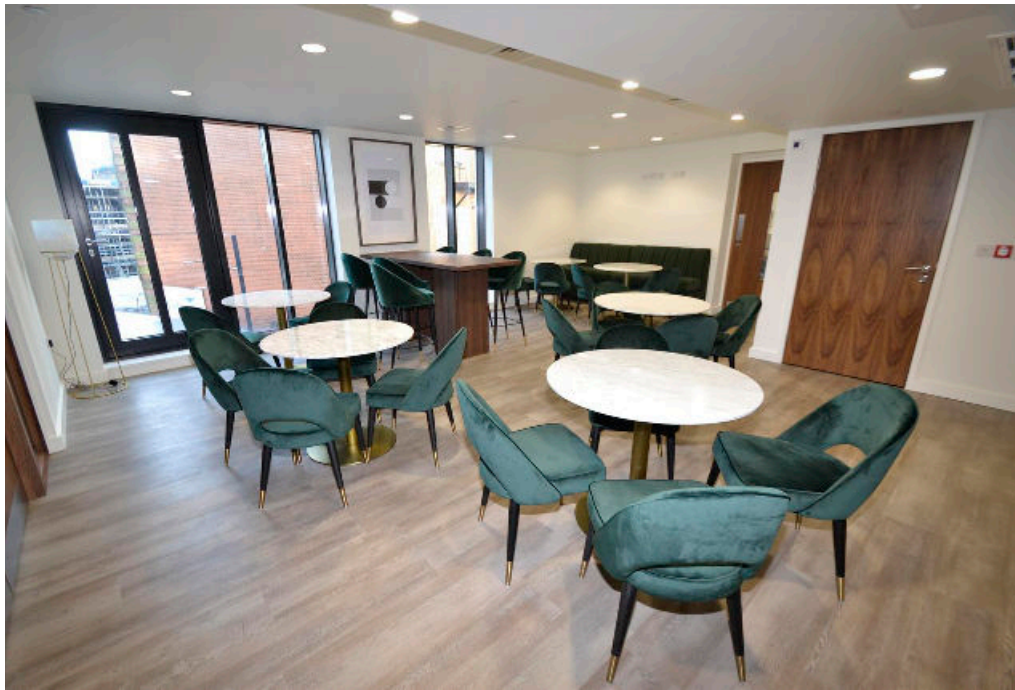
## Facilities

Residents can also take advantage of concierge parking at Q Car Park adjacent to The Bank in Brindleyplace as well as relaxing at the canal side, bars and restaurants.

A bespoke residents' app has also been created - which offers those living at the development access to a number of services and discounts from local businesses, information about their homes and several other features.

- Concierge service
- Private gym, residents lounge and coffee bar
- Restaurants and shops on the ground floor
- Secure and private outdoor green open space
- Secure entrance with CCTV, designed in accordance with Secure by Design Principles
- Secure on-site bicycle storage facilities
- Bespoke residents' app
- Concierge parking
- Easy access to the new Metro tramline







## Location

Birmingham itself is the epitome of city life. It's now ranked the no.1 city for people relocating from London and is the only city outside the capital with Harvey Nicholls, Selfridges and House of Fraser stores.

It's also ranked as the sixth best place to invest in Europe and with five Michelin starred restaurants, an enviable number of independent and high street shops, vibrant bars and artisan coffee houses, it's not hard to see why.

The Bank is located on Broad Street, Birmingham close to the National Indoor Arena, the new Birmingham library, the ICC, Symphony Hall and Victoria Square.

Colmore Business District, with its many bars and restaurants, The Mailbox, Bullring and Selfridges with their many shops and restaurants are also within short walking distance.





**I would be delighted to tell you more.**

**Knight Frank**  
1 Colmore Row Birmingham B3 2BJ

**Kate Horton**  
+44 121 233 6495  
katep.horton@knightfrank.com

**[knightfrank.co.uk](https://www.knightfrank.co.uk)**



**Connecting people & property, perfectly.**

Fixtures and fittings: A list of the fitted carpets, curtains, light fittings and other items fixed to the property which are included in the sale (or may be available by separate negotiation) will be provided by the Seller's Solicitors.

Important Notice: 1. Particulars: These particulars are not an offer or contract, nor part of one. You should not rely on statements by Knight Frank LLP in the particulars or by word of mouth or in writing ("information") as being factually accurate about the property, its condition or its value. Neither Knight Frank LLP nor any joint agent has any authority to make any representations about the property, and accordingly any information given is entirely without responsibility on the part of the agents, seller(s) or lessor(s). 2. Photos, Videos etc: The photographs, property videos and virtual viewings etc. show only certain parts of the property as they appeared at the time they were taken. Areas, measurements and distances given are approximate only. 3. Regulations etc: Any reference to alterations to, or use of, any part of the property does not mean that any necessary planning, building regulations or other consent has been obtained. A buyer or lessee must find out by inspection or in other ways that these matters have been properly dealt with and that all information is correct. 4. VAT: The VAT position relating to the property may change without notice. 5. To find out how we process Personal Data, please refer to our Group Privacy Statement and other notices at <https://www.knightfrank.com/legals/privacy-statement>.

Particulars dated [23/4/2021]. Photographs and videos dated [March 2021].

Knight Frank is the trading name of Knight Frank LLP. Knight Frank LLP is a limited liability partnership registered in England and Wales with registered number OC305934. Our registered office is at 55 Baker Street, London W1U 8AN where you may look at a list of members' names. If we use the term 'partner' when referring to one of our representatives, that person will either be a member, employee, worker or consultant of Knight Frank LLP and not a partner in a partnership. If you do not want us to contact you further about our services then please contact us by either calling 020 3544 0692, email to [marketing.help@knightfrank.com](mailto:marketing.help@knightfrank.com) or post to our UK Residential Marketing Manager at our registered office (above) providing your name and address.