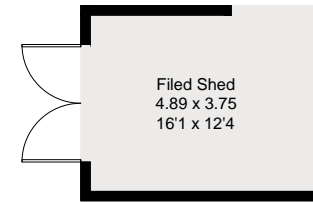
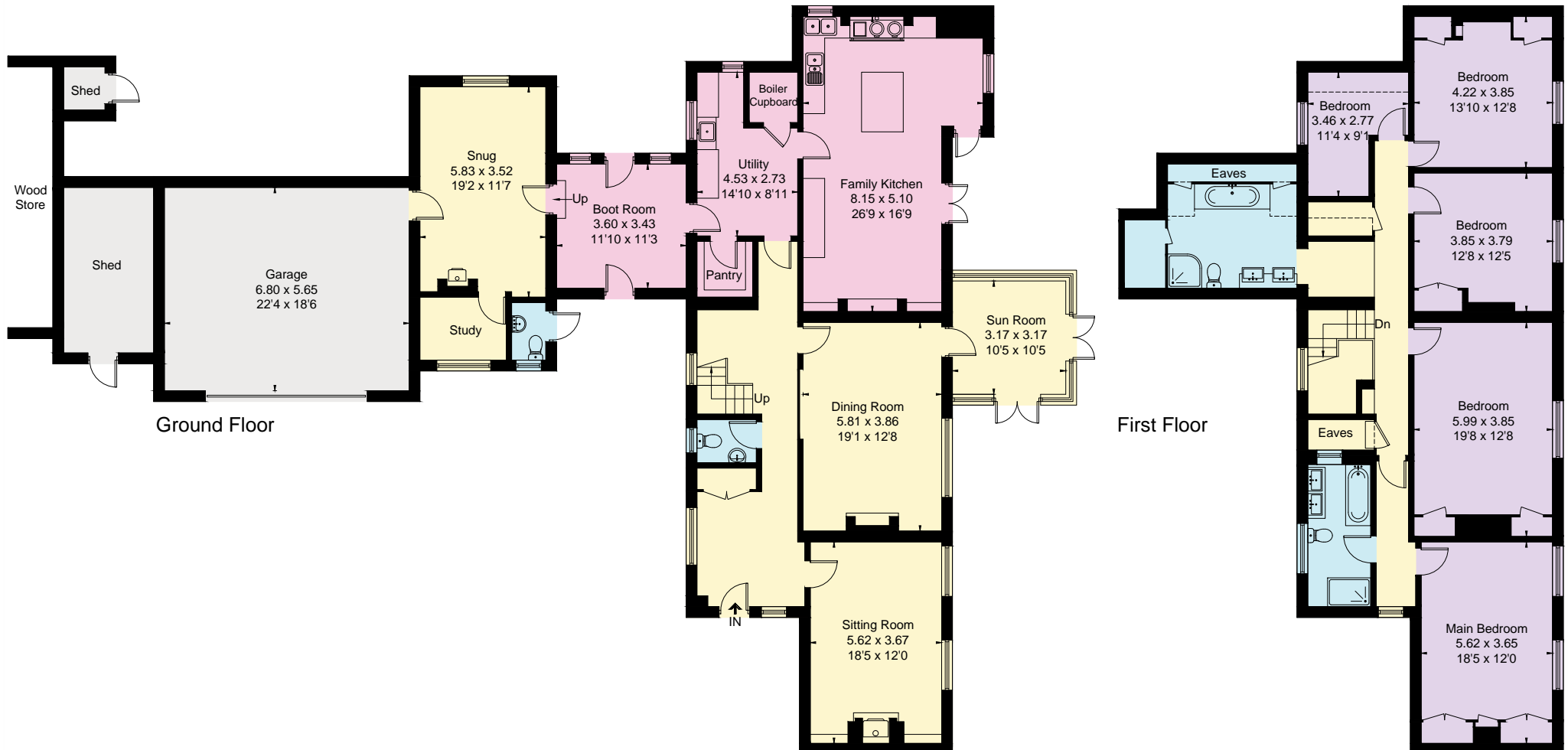


Approximate Floor Area
 Ground Floor = 216.9 sq m / 2,335 sq ft
 First Floor = 136.5 sq m / 1,469 sq ft
 Total = 353.4 sq m / 3,804 sq ft



(Not Shown In Actual Location / Orientation)



This floor plan has been drawn in accordance with RICS Property Measurement 2nd edition.
 All measurements, including the floor area, are approximate and for illustrative purposes only. @fourwalls-group.com #89949