

# Down Cottage, Monk Sherborne









# Down Cottage, Monk Sherborne, Hampshire

---

A stylish, detached village house with wonderful garden views over adjoining countryside. Down Cottage is an attractive and well-presented house, located in a fine setting within the popular village of Monk Sherborne.

The ground floor features a beautiful kitchen/breakfast room with adjoining garden room. The kitchen being fitted with handmade units with granite work surfaces, incorporates a central island and gas fired Aga with integrated module. The garden room, which adjoins the kitchen, is bright and spacious with views over the gardens. A lovely feature is the small wood burner, providing a cosy environment during winter months. The formal sitting room is triple aspect with an open fireplace. Completing the ground floor is a family room and utility/laundry room.

On the first floor, the principal bedroom has a vaulted ceiling and an attractive en suite bathroom. There is a guest bedroom with en suite shower room, two further bedrooms and a family bathroom.

Outside there is a barn style double garage with guest bedroom suite above. The gardens have been beautifully landscaped and are full of summer colour extending to about 0.4 acre.











## Location

Basingstoke 4 miles, Reading 13 miles, Newbury 15 miles M3 (Junction 6) 6 miles, M4 (Junction 12) 10 miles London Waterloo via Basingstoke Station from 44 minutes (All distances and times are approximate). Schools in the area include Priory Academy School, Cheam, Wellesley, Sherfield, St Gabriel's and Lord Wandsworth College.

Post Code: RG26 5HL

What3Words: ///quilting.replayed.mindset

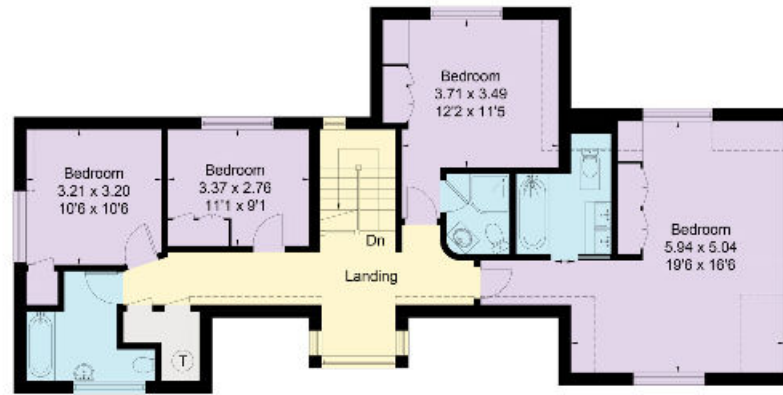




Approximate Floor Area = 296.44 sq m / 3191 sq ft (Including Garage / Annexe)



Local Authority: Basingstoke and Deane  
Borough Council  
Council Tax band: F  
Tenure: available freehold



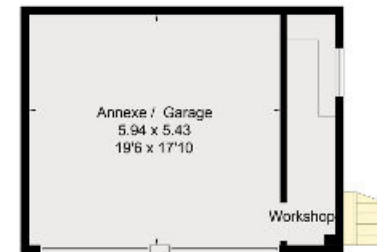
First Floor



Garage / Annexe - First Floor



Ground Floor



Garage / Annexe - Ground Floor

Knight Frank  
North Hampshire  
Matrix House  
Basing View  
Basingstoke RG21 4FF  
[knightfrank.co.uk](http://knightfrank.co.uk)

I would be delighted to tell you more  
Clive Moon  
01256 630976  
[clive.moon@knightfrank.com](mailto:clive.moon@knightfrank.com)



Fixtures and fittings: A list of the fitted carpets, curtains, light fittings and other items fixed to the property which are included in the sale (or may be available by separate negotiation) will be provided by the Seller's Solicitors.  
Important Notice: 1. Particulars: These particulars are not an offer or contract, nor part of one. You should not rely on statements by Knight Frank LLP in the particulars or by word of mouth or in writing ("information") as being factually accurate about the property, its condition or its value. Neither Knight Frank LLP nor any joint agent has any authority to make any representations about the property, and accordingly any information given is entirely without responsibility on the part of the agents, seller(s) or lessor(s). 2. Photos, Videos etc: The photographs, property videos and virtual viewings etc. show only certain parts of the property as they appeared at the time they were taken. Areas, measurements and distances given are approximate only. 3. Regulations etc: Any reference to alterations to, or use of, any part of the property does not mean that any necessary planning, building regulations or other consent has been obtained. A buyer or lessee must find out by inspection or in other ways that these matters have been properly dealt with and that all information is correct. 4. VAT: The VAT position relating to the property may change without notice. 5. To find out how we process Personal Data, please refer to our Group Privacy Statement and other notices at <https://www.knightfrank.com/legals/privacy-statement>.  
Particulars dated April 2024. Photographs and videos dated June 2021.  
All information is correct at the time of going to print. Knight Frank is the trading name of Knight Frank LLP. Knight Frank LLP is a limited liability partnership registered in England and Wales with registered number OC305934. Our registered office is at 55 Baker Street, London W1U 8AN. We use the term 'partner' to refer to a member of Knight Frank LLP, or an employee or consultant. A list of members names of Knight Frank LLP may be inspected at our registered office. If you do not want us to contact you further about our services then please contact us by either calling 020 3544 0692, email to [marketing.help@knightfrank.com](mailto:marketing.help@knightfrank.com) or post to our UK Residential Marketing Manager at our registered office (above) providing your name and address.