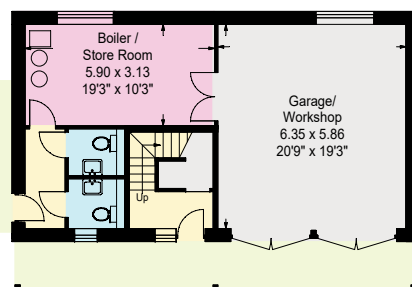
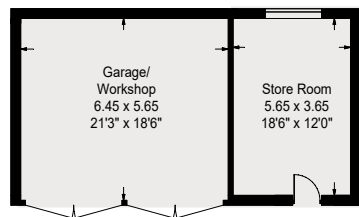


- Reception Rooms/General Circulation Areas
- Kitchen/Workshop/Utility/Plant
- Bedroom/Dressing Rooms
- Bathrooms
- Storage
- Outside Space
- Green House

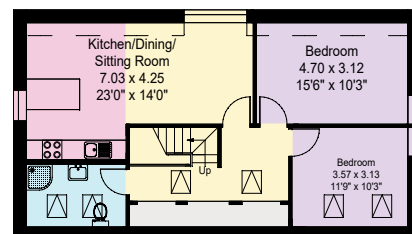
Approximate
Gross Internal Floor Area
House: 748sq.m. or 8052sq.ft.
Garage & carport : 59sq.m. or 635sq.ft.
Party Barn: 267sq.m. or 2874sq.ft.
House Keeper's Flat: 79sq.m. or 850sq.ft.
Garages/Workshops and Stores: 122sq.m. or 1313sq.ft.
Main Garages & Office: 247sq.m. or 2659sq.ft.
North Lodge: 118sq.m. or 1270sq.ft.
Gymnasium: 125sq.m. or 1346sq.ft.
Gardener's Cottage: 58sq.m. or 624sq.ft.
1 Field View: 128sq.m. or 1378sq.ft.
Garage: 25sq.m. or 269sq.ft.
2 Field View: 128sq.m. or 1378sq.ft.
Garage: 25sq.m. or 269sq.ft.

Total: 2129sq.m. or 22917sq.ft.

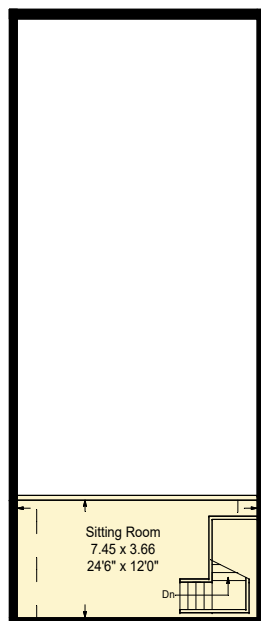
© 2024 HOMEPLAN
www.homeplanuk.co.uk
Constructed in accordance with the IPMS code of measuring practice, this plan is for layout guidance only. It is not to scale, unless specified. Please check all dimensions & shapes before making any decisions reliant upon them.



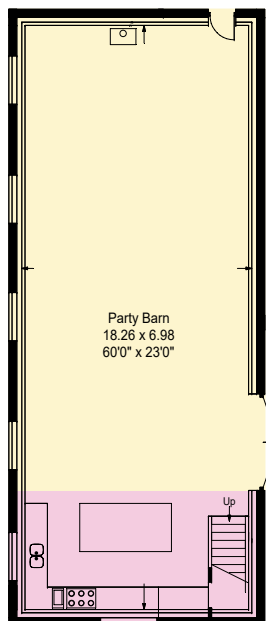
Ground Floor



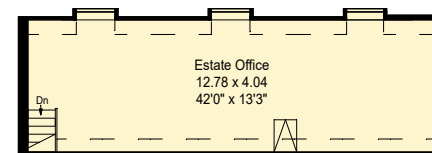
First Floor



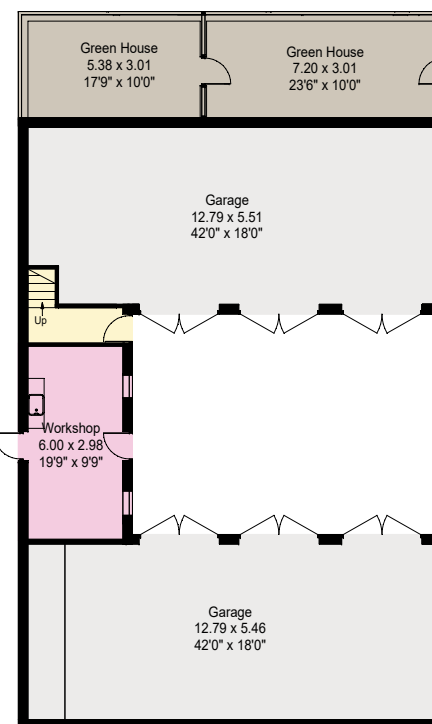
First Floor



Ground Floor

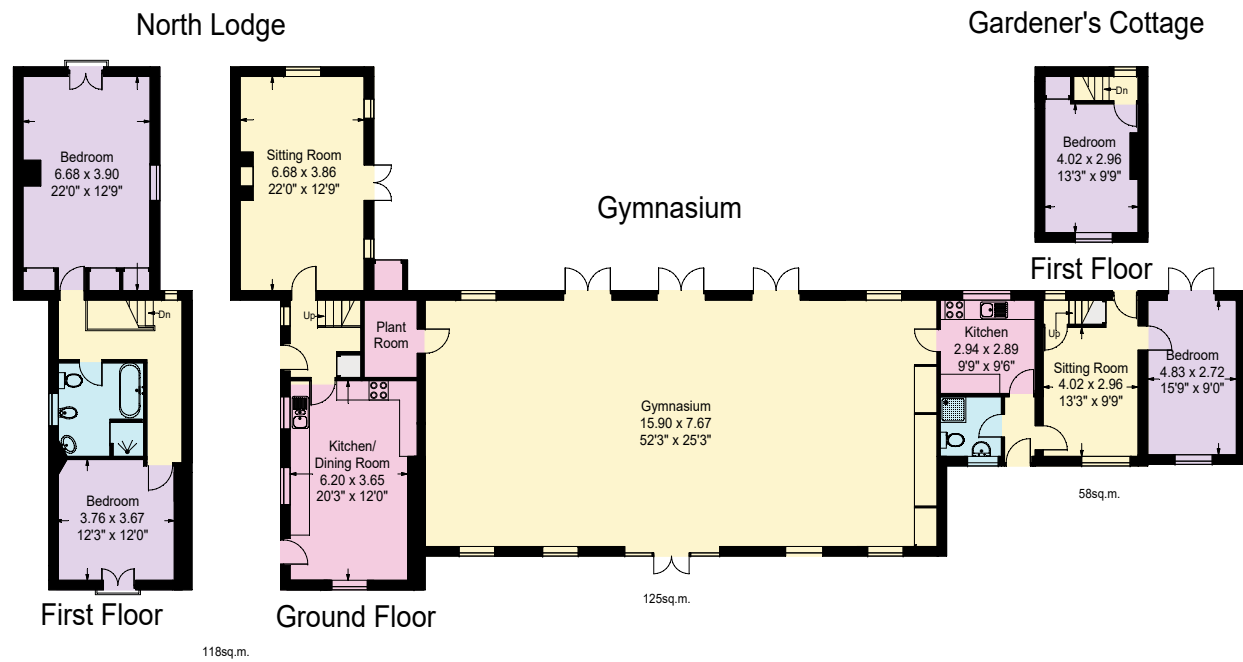


First Floor

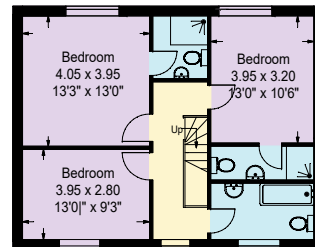
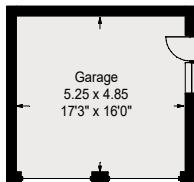


Ground Floor

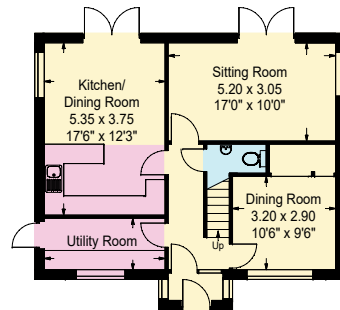
247sq.m. inc Green house
9sq.m. eaves



No.1 Field View

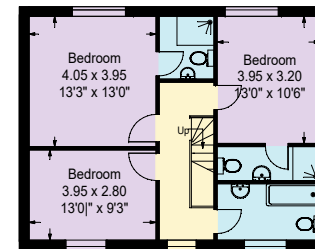
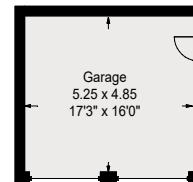


First Floor

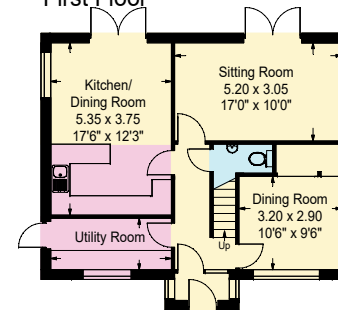


Ground Floor

No.2 Field View



First Floor



Ground Floor