



Stonebridge, Medstead, Alton





Stonebridge, Stoney Lane, Medstead

Upon entering Stonebirdge you are immediately welcomed by a delightful, vaulted reception hall with rooms on three sides. To the left, double doors open into a spacious and impressive family room featuring a central fireplace flowing through to the dining room and into the modern fully fitted family kitchen with a central island and bi-fold doors on to the garden. The volume throughout these three rooms creates the perfect environment for entertaining. To the right of the entrance hall, steps lead down to a dual-aspect sitting room with an inglenook fireplace and mezzanine level. To the end of the entrance, the hall welcomes you into a magnificent drawing room with access to the garden, exposed beams and vaulted ceilings. Beyond the drawing room, doors open into a separate study and additional utility/boot room. The entrance hall includes storage facilities, a boiler room and a separate WC.

The first floor is approached by a grand staircase and has four double bedrooms. The principal bedroom suite benefits from a large balcony overlooking the garden with a grand en suite bathroom and walk in dressing room. There are three further double bedrooms and two bath/shower rooms on this level. The first floor also benefits from a spacious laundry room. Steps lead up to the second floor and into a glazed turret offering far-reaching surrounding views of the land. This room can be used as an occasional bedroom or secondary study.



5/6



3



5

EPC

D





Stonebridge is located between the popular village of Medstead and Four Marks. Medstead village amenities include a church, village hall, public house shop, and post office. The larger village of Four Marks provides several local amenities, including an excellent butcher, greengrocer, local supermarket and pharmacy. Medstead Primary School and Amery Hill Secondary School are the catchment area schools. There is also Eggar's and Perins locally, with excellent independent schools, including Winchester College and St Swithun's.

Bridleways are accessible immediately from the property to offer access for riding to the glorious open surrounding countryside of the Hampshire Downs.

Alton station 5.4 miles (London Waterloo 67 minutes), Basingstoke 12 miles, Winchester 13 miles. (Time and distances approximate)





Outside within the grounds are a number of outbuildings including a competition standard stable yard with six boxes (including tack room) and a feed store. There are further tractor sheds, open garages and workshop. There is also a 40 x 20 metre manege and around 9-10 acres of fenced paddocks. There is a detached triple garage block with one bedroom flat above and a separate gym and office building. The gardens are a feature of the house with areas of lawn, and a fenced garden with a stone patio area adjacent to the house, creating the perfect space for al fresco dining. There are further additional patio dining areas with a garden kitchen and cooking facilities. Stonebridge house is approached by a gated entrance on to a large driveway with parking for numerous vehicles and a driveway to the rear for equestrian vehicles.





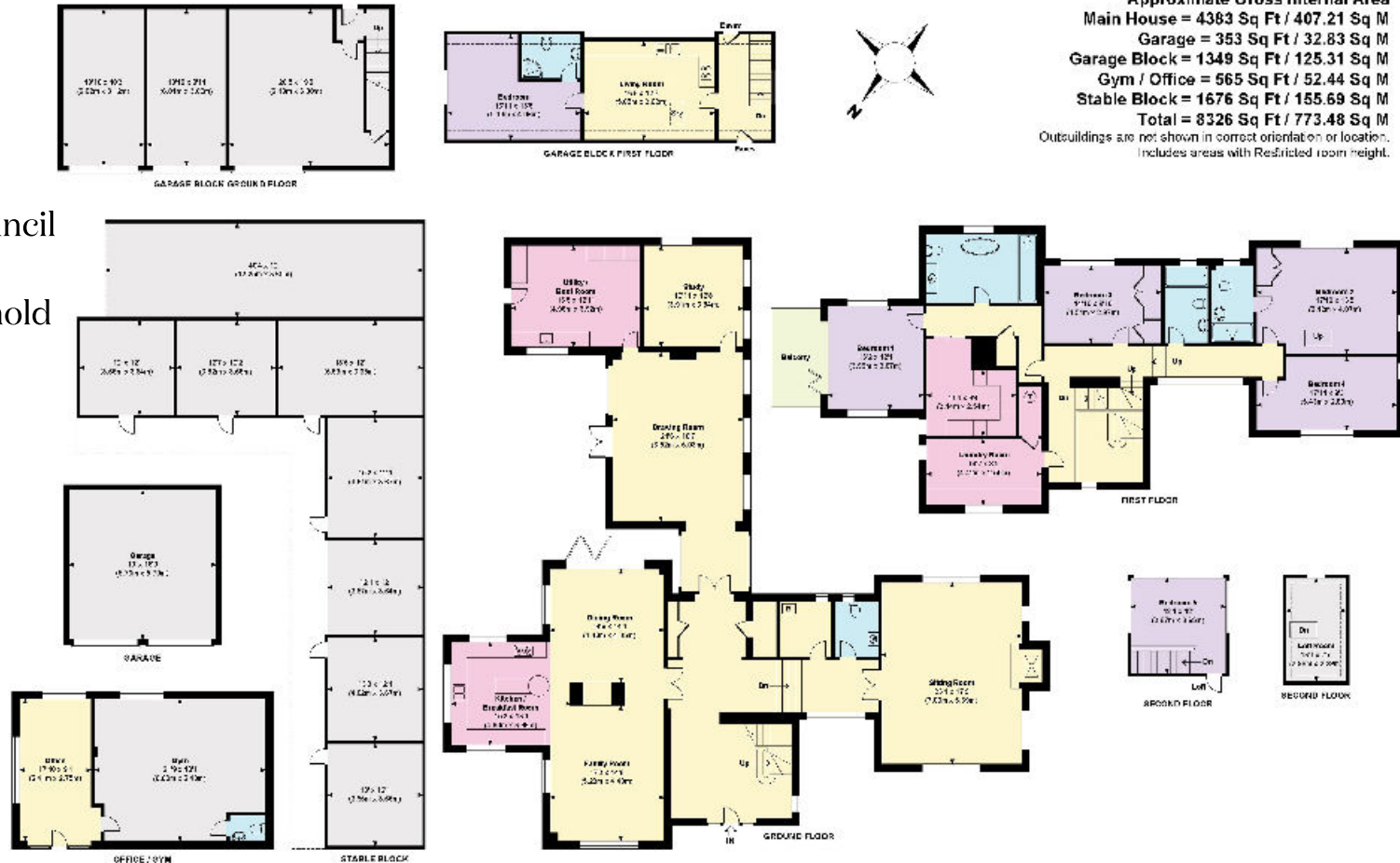
Postcode: GU34 5EL
Local authority: East Hampshire District Council
Council tax band: G
Tenure: Available freehold

This plan is for guidance only and must not be relied upon as a statement of fact. Attention is drawn to the important notice on the last page of the text of the Particulars.

Stonebridge

Approximate Gross Internal Area
Main House = 4383 Sq Ft / 407.21 Sq M
Garage = 353 Sq Ft / 32.83 Sq M
Garage Block = 1349 Sq Ft / 125.31 Sq M
Gym / Office = 565 Sq Ft / 52.44 Sq M
Stable Block = 1676 Sq Ft / 155.69 Sq M
Total = 8326 Sq Ft / 773.48 Sq M

Outbuildings are not shown in correct orientation or location. Includes areas with Restricted room height.



Knight Frank
Winchester
 14-15 Jewry Street
 Winchester
 SO23 8RZ
knightfrank.co.uk

We would be delighted to tell you more
Clive Moon 01256 630976 clive.moon@knightfrank.com
George Clarendon 01962 677234 george.clarendon@knightfrank.com

Fixtures and fittings: A list of the fitted carpets, curtains, light fittings and other items fixed to the property which are included in the sale (or may be available by separate negotiation) will be provided by the Seller's Solicitors.

Important Notice: 1. Particulars: These particulars are not an offer or contract, nor part of one. You should not rely on statements by Knight Frank LLP in the particulars or by word of mouth or in writing ("information") as being factually accurate about the property, its condition or its value. Neither Knight Frank LLP nor any joint agent has any authority to make any representations about the property, and accordingly any information given is entirely without responsibility on the part of the agents, seller(s) or lessor(s). 2. Photos, Videos etc: The photographs, property videos and virtual viewings etc. show only certain parts of the property as they appeared at the time they were taken. Areas, measurements and distances given are approximate only. 3. Regulations etc: Any reference to alterations to, or use of, any part of the property does not mean that any necessary planning, building regulations or other consent has been obtained. A buyer or lessee must find out by inspection or in other ways that these matters have been properly dealt with and that all information is correct. 4. VAT: The VAT position relating to the property may change without notice. 5. To find out how we process Personal Data, please refer to our Group Privacy Statement and other notices at <https://www.knightfrank.com/legals/privacy-statement>.

Particulars dated August 2024. Photographs and videos dated August 2024.

All information is correct at the time of going to print. Knight Frank is the trading name of Knight Frank LLP. Knight Frank LLP is a limited liability partnership registered in England and Wales with registered number OC305934. Our registered office is at 55 Baker Street, London W1U 8AN. We use the term 'partner' to refer to a member of Knight Frank LLP, or an employee or consultant. A list of members names of Knight Frank LLP may be inspected at our registered office. If you do not want us to contact you further about our services then please contact us by either calling 020 3544 0692, email to marketing.help@knightfrank.com or post to our UK Residential Marketing Manager at our registered office (above) providing your name and address.

