

Approximate Floor Area

Basement = 16.2 sq m / 174 sq ft

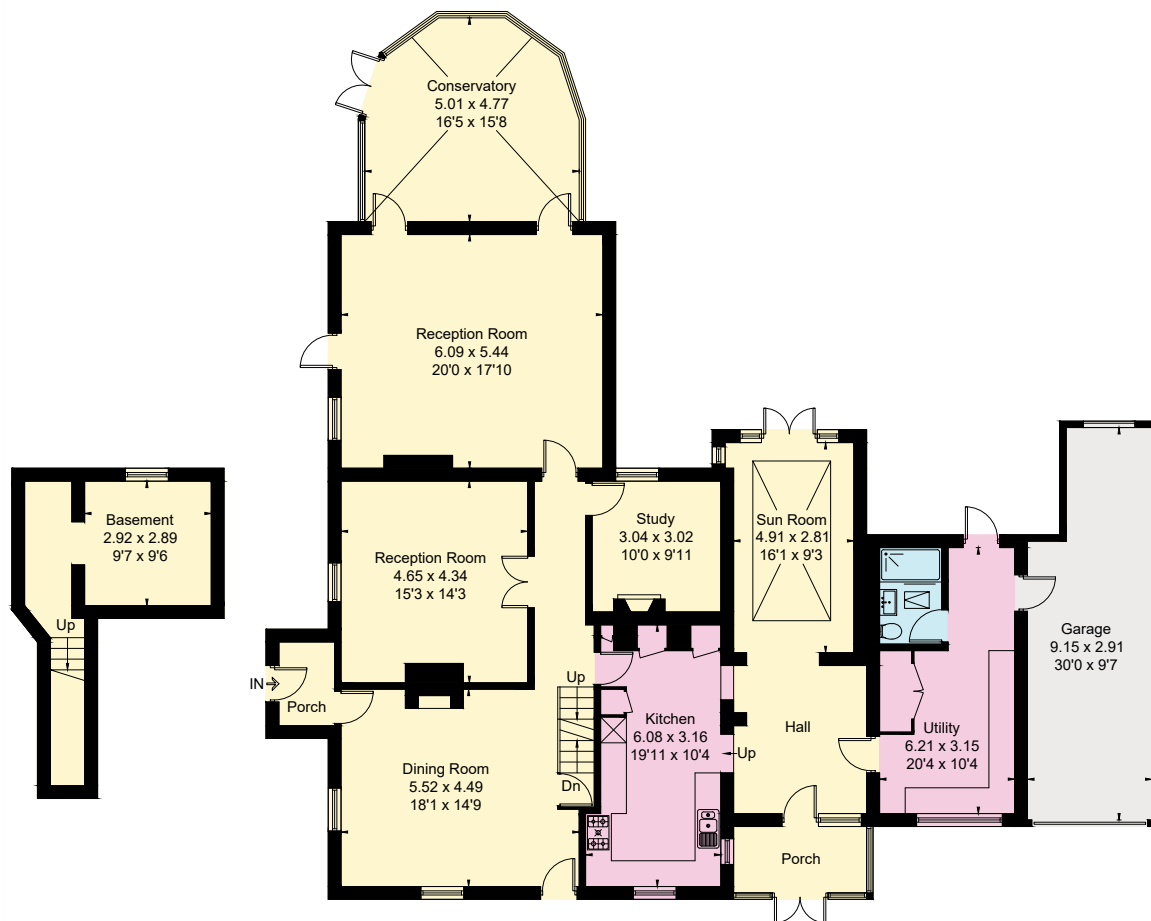
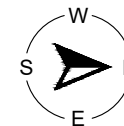
Ground Floor = 226.8 sq m / 2441 sq ft

First Floor = 118.7 sq m / 1278 sq ft

Loft Second Floor = 85.0 sq m / 915 sq ft

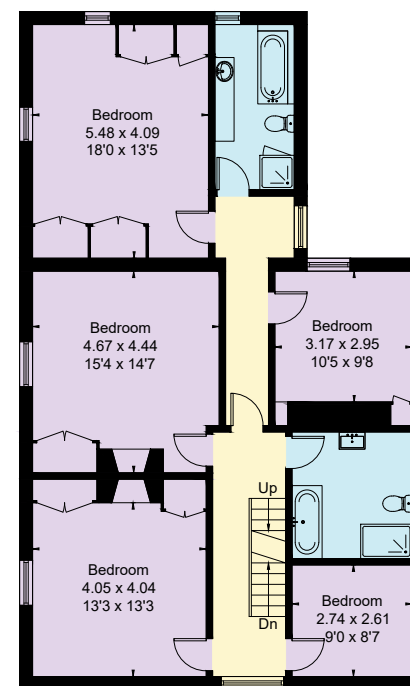
Total = 446.7 sq m / 4808 sq ft

(Including Garage)

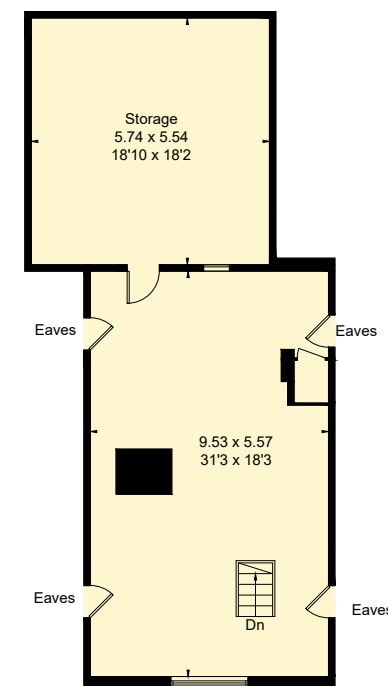


Basement

Ground Floor



First Floor



Loft Second Floor



This floor plan has been drawn in accordance with RICS Property Measurement 2nd edition.

All measurements, including the floor area, are approximate and for illustrative purposes only. @fourwalls-group.com #90608