

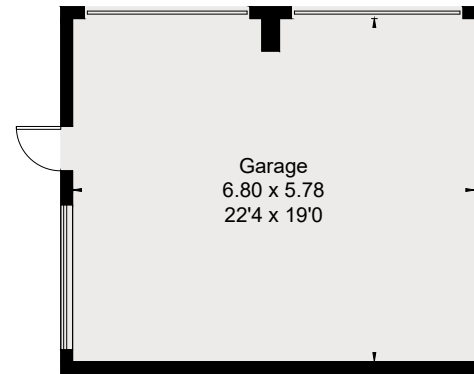
Approximate Floor Area

Ground Floor = 162.2 sq m / 1746 sq ft

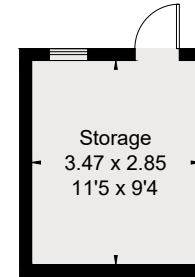
First Floor = 69.3 sq m / 746 sq ft

Outbuildings = 79.8 sq m / 859 sq ft

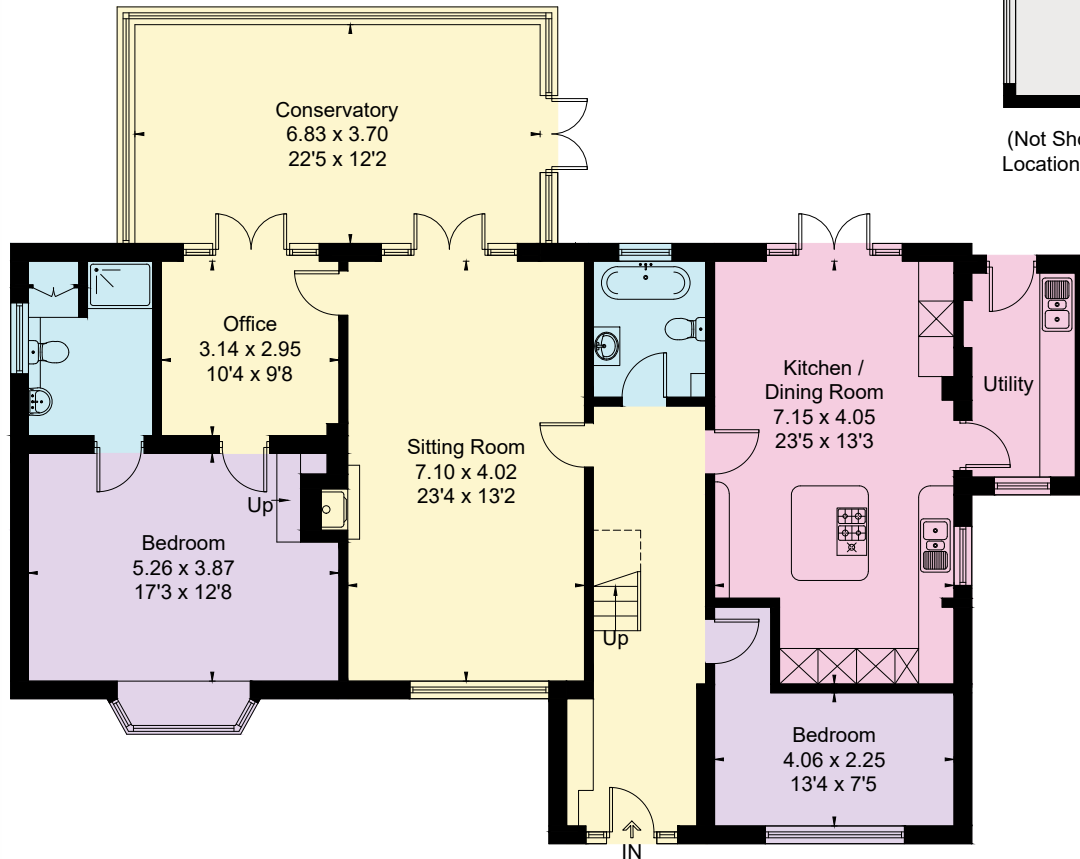
Total = 311.3 sq m / 3351 sq ft



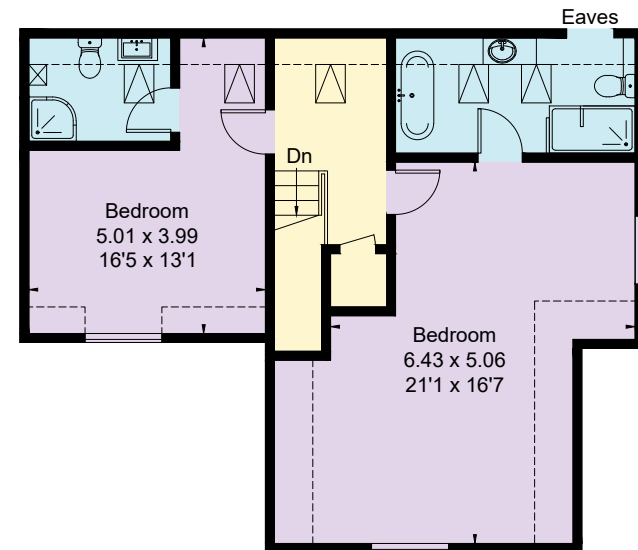
(Not Shown In Actual Location / Orientation)



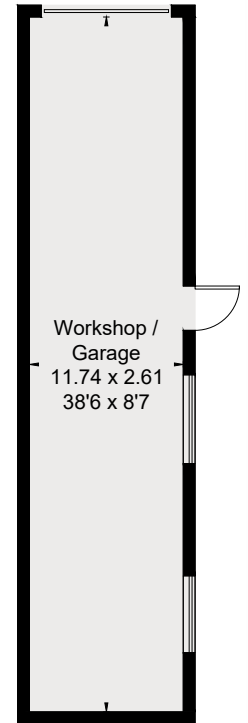
(Not Shown In Actual Location / Orientation)



Ground Floor



First Floor



(Not Shown In Actual Location / Orientation)



This floor plan has been drawn in accordance with RICS Property Measurement 2nd edition.

All measurements, including the floor area, are approximate and for illustrative purposes only. @fourwalls-group.com #83695