

An aerial photograph of a large, multi-story brick house with a red-tiled roof, situated in a lush green landscape. The house has a prominent chimney and a small entrance porch. To the left, there is a smaller wooden building. The property is surrounded by a large lawn, numerous trees, and a gravel driveway. In the background, there are rolling green hills under a blue sky with scattered clouds.

The Lodge
Bardfield End Green
CM6





The Lodge

Bardfield End Green, Dunmow

Bishop's Stortford (38 minutes to London Liverpool Street) - 13 miles

Great Dunmow - 7.2 miles

Cambridge - 28.7 miles

Stansted Airport - 9.1 miles

(All times and distances are approximate)

A beautifully presented country house set in an
idyllic rural location

Reception hall | Sitting room | Dining room | Family room | Kitchen/breakfast room | Study | Conservatory | Utility
Principal bedroom suite with dressing room | 3 further bedroom suites with dressing rooms
2 further bedrooms | Jack and Jill en suite shower room

Annexe - Bedroom suite with dressing room | Extensive sitting/dining room | Kitchen and utility room

Delightful mature gardens and grounds | garaging

In all about 4 acres



Bishops Stortford

26 North Street, CM23 2LW

01279 213340

paddy.pritchard-gordon@knightfrank.com

knightfrank.co.uk



The Lodge has been beautifully refurbished and extended by the present owners with 3 spacious and light reception rooms enjoying delightful views over the gardens and beyond. As well as the entertaining rooms, there is a well-placed study and large south facing conservatory. The substantial kitchen/breakfast room benefits from extensive built-in units, a large central island and direct access to the terrace. The bedroom accommodation is well arranged, 4 of which benefit from large dressing rooms.

The extensive annexe is a particular feature of the property, with a double height reception room with kitchen and dining area. There is also a utility room with separate door to outside. The bedroom suite benefits from a dressing room.

The grounds surround the house on all sides, providing privacy, mainly laid to lawn and interspersed with mature specimen trees. The terrace runs the full length of the south and west facade and to the east of the house is a double garage with store room. There is also an in and out driveway with electric gate.



The property lies in the picturesque hamlet of Bardfield End Green, which lies just over a mile from the historic market town of Thaxted, with its fine town hall, many Tudor and medieval buildings and impressive parish church. The town enjoys a range of shopping facilities and weekly market. This unspoilt corner of Essex is convenient for commuters as there is access to the M11 (J8) to the south at Bishop's Stortford. Mainline services to London and Cambridge run from Audley End (about 7 miles) and Bishop's Stortford (about 11 miles).



Directions

CM6 3PZ

Services

Mains electricity, oil-fired central heating, septic tank.

Ultra-fast, 300 Mbps broadband.

Schools

Thaxted Primary School, Great Sampford Primary School, Great Easton CofE School, Great Bardfield Primary School, Felsted School, Helena Romanes School, Bishop's Stortford College, Herts & Essex High School, Joyce Frankland Academy, Saffron Walden Country High School.

Viewings

Strictly by appointment only with the selling agent.

Local Authority

Uttlesford District Council. Tel: 01799 510510. Council tax band G.

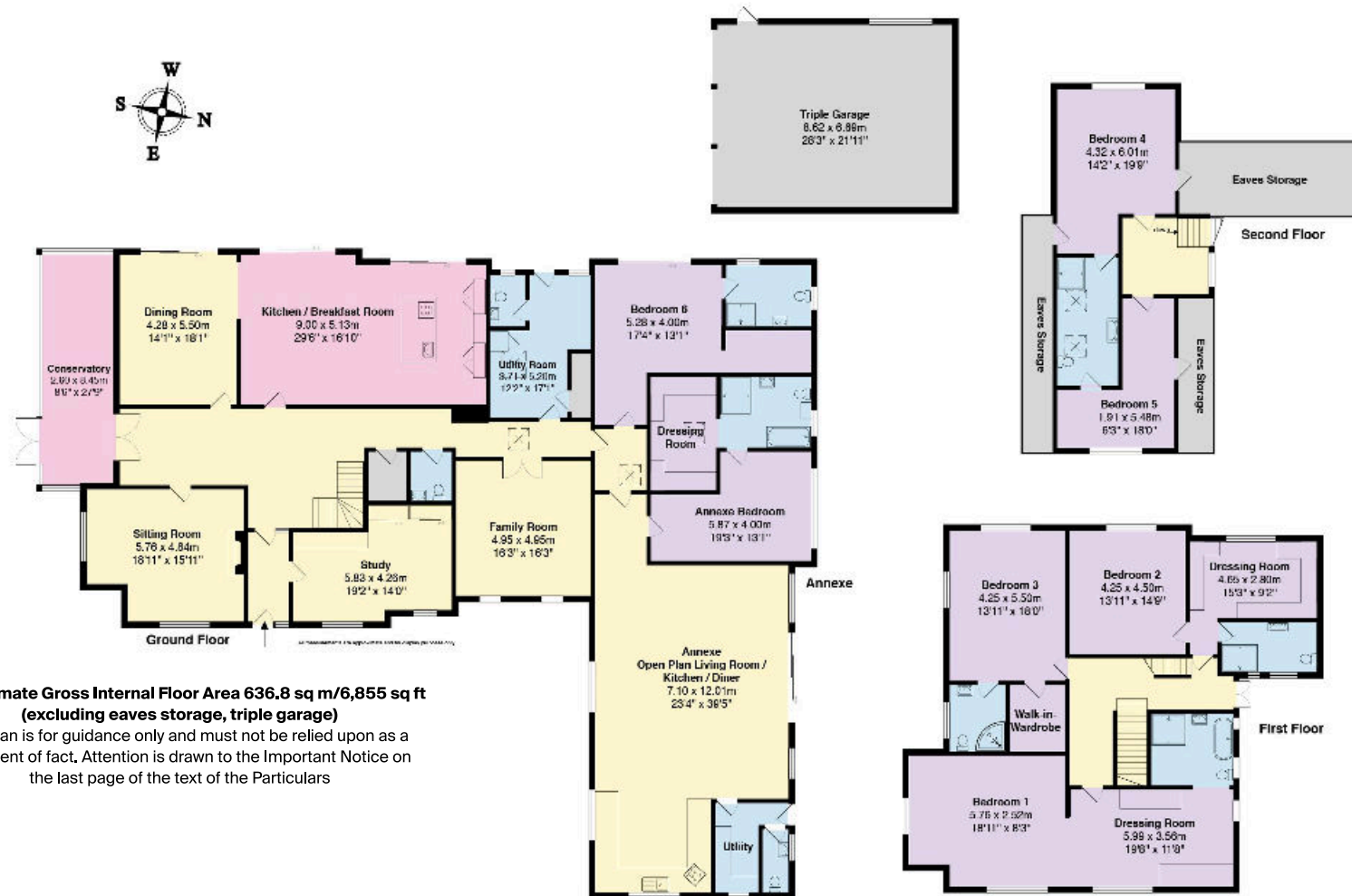
EPC

D

Planning

Full planning permission has been granted for the construction of a triple cart lodge. Uttlesford ref UTT/1782/11/FUL and UTT/13/0578/NMA





Approximate Gross Internal Floor Area 636.8 sq m/6,855 sq ft (excluding eaves storage, triple garage)

This plan is for guidance only and must not be relied upon as a statement of fact. Attention is drawn to the Important Notice on the last page of the text of the Particulars

Knight Frank
Bishop's Stortford
26 North Street
CM23 2LW

I would be delighted to tell you more.

Paddy Pritchard-Gordon
01279 213340
paddy.pritchard-gordon@knightfrank.com

[knightfrank.co.uk](https://www.knightfrank.co.uk)



Connecting people & property, perfectly.

Fixtures and fittings: A list of the fitted carpets, curtains, light fittings and other items fixed to the property which are included in the sale (or may be available by separate negotiation) will be provided by the Seller's Solicitors.

Important Notice: 1. Particulars: These particulars are not an offer or contract, nor part of one. You should not rely on statements by Knight Frank LLP in the particulars or by word of mouth or in writing ("information") as being factually accurate about the property, its condition or its value. Neither Knight Frank LLP nor any joint agent has any authority to make any representations about the property, and accordingly any information given is entirely without responsibility on the part of the agents, seller(s) or lessor(s). 2. Photos, Videos etc: The photographs, property videos and virtual viewings etc. show only certain parts of the property as they appeared at the time they were taken. Areas, measurements and distances given are approximate only. 3. Regulations etc: Any reference to alterations to, or use of, any part of the property does not mean that any necessary planning, building regulations or other consent has been obtained. A buyer or lessee must find out by inspection or in other ways that these matters have been properly dealt with and that all information is correct. 4. VAT: The VAT position relating to the property may change without notice. 5. To find out how we process Personal Data, please refer to our Group Privacy Statement and other notices at <https://www.knightfrank.com/legals/privacy-statement>.

Particulars dated May 2021. Photographs and videos dated May 2021.

Knight Frank is the trading name of Knight Frank LLP. Knight Frank LLP is a limited liability partnership registered in England and Wales with registered number OC305934. Our registered office is at 55 Baker Street, London W1U 8AN where you may look at a list of members' names. If we use the term 'partner' when referring to one of our representatives, that person will either be a member, employee, worker or consultant of Knight Frank LLP and not a partner in a partnership. If you do not want us to contact you further about our services then please contact us by either calling 020 3544 0692, email to marketing.help@knightfrank.com or post to our UK Residential Marketing Manager at our registered office (above) providing your name and address.

