



Moor Place, Much Hadham, Hertfordshire **SG10**



Moor Place

Hertfordshire, SG10

Moor Place is an outstanding Grade I listed Georgian country house in a beautiful parkland setting, on the edge of the much sought after village of Much Hadham. The market town of Bishop's Stortford is within 6 miles providing a wide range of shops and services.

Moor Place is in a rural setting yet only 40 miles from Central London via the A10, M25 and A1. Trains from Bishop Stortford take about 45 minutes to London Liverpool Street or about 30 minutes to Tottenham Hale tube station.

There is a sought after primary school in Much Hadham and a wide selection of fee-paying and state secondary schools within 15 miles of Moor Place.

Racing is at Newmarket (42 miles) and Great Leighs (25 miles) and hunting with The Puckeridge. There are a number of golf courses locally including Hanbury Manor (8 miles) and East Herts (7 miles).

Nearest Stations

- Bishop's Stortford Station 4.5 miles
- Sawbridgeworth Station 4.9 miles
- Ware Station 4.9 miles





Description

The house is approached along a tree lined avenue from the Grade II listed gates on the Much Hadham village high street through parkland arriving at the impressive west front.

The house is a substantial, beautiful square house of appealing symmetry built of red brick with stone dressings and a hipped tile roof. A stone balustrade parapet is carried round the top of the building with a bracketed cornice below.



A handsome Grade I listed Georgian country house in a beautiful parkland setting on the edge of one of Hertfordshire's most sought after villages.



History

There has been a dwelling where Moor Place now stands since before the Norman Conquest when it was owned by the Bishops of London. By the 15th Century the land was held by a family called More who gave their name to the house, then known as Mores Place. The estate then passed to the Dalton family who it is thought built the Elizabethan house which preceded the current Moor Place.

The estate passed through a number of families during the 17th and 18th centuries until 1750 when it was bought by James Gordon whose family owned Moor Place for over a century, four generations of them living there, during which time the original Elizabethan House was demolished and the existing Georgian house, designed by Robert Mitchell, was built along side, eventually being finished in 1779.

Moor Place was sold in 1854 to Money Wigram. On his death, the estate was left to his son who five years later sold it to Mr F. H. Norman who added what is now the basement flats on to the north of the house (designed by Norman Shaw). The south wing, known as the nursery wing and designed by Sir Ernest Newton, was added by Mr Norman in 1906, with lead work on a hopper head downspout on the wing bearing his monogram and date.

In 1916, F. H. Norman died. Moor Place passed to his elder son Montagu Norman, Governor of The Bank of England from 1920 to 1944. In 1920, Montagu passed Moor Place to his brother Ronald, chairman of BBC and London County Council.

The house was bought by the current owners in 2013 who have undertaken a careful and sensitive restoration of the property.



Location

Moor Place is located near to the much sought after village of Much Hadham. The market town of Bishop's Stortford is within 6 miles providing access to a wide range of shops and services.

Moor Place is in a rural setting yet only 40 miles from Central London via the A10, M25 and A1. Trains from Bishop Stortford take about 45 minutes to London Liverpool Street.

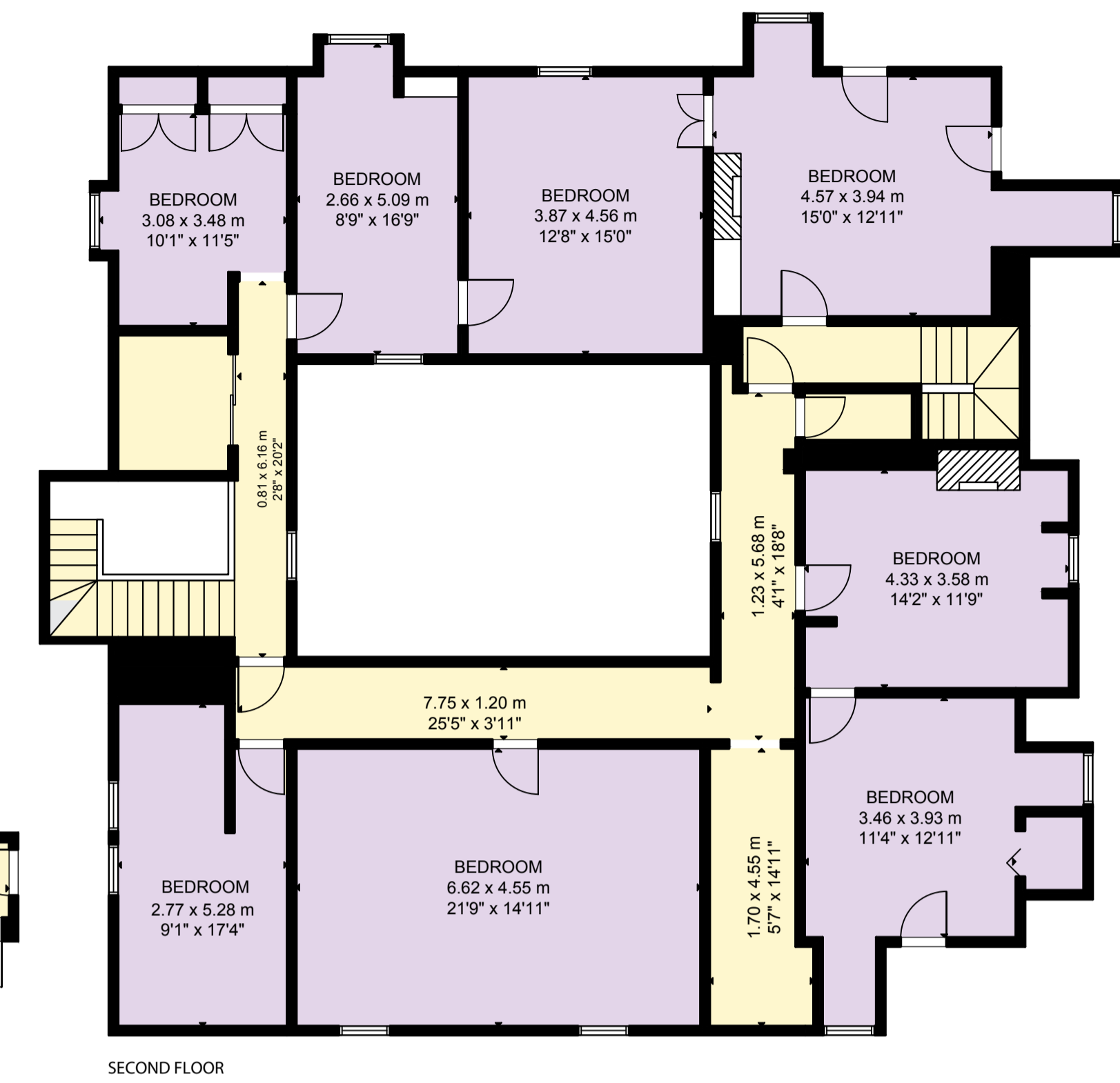
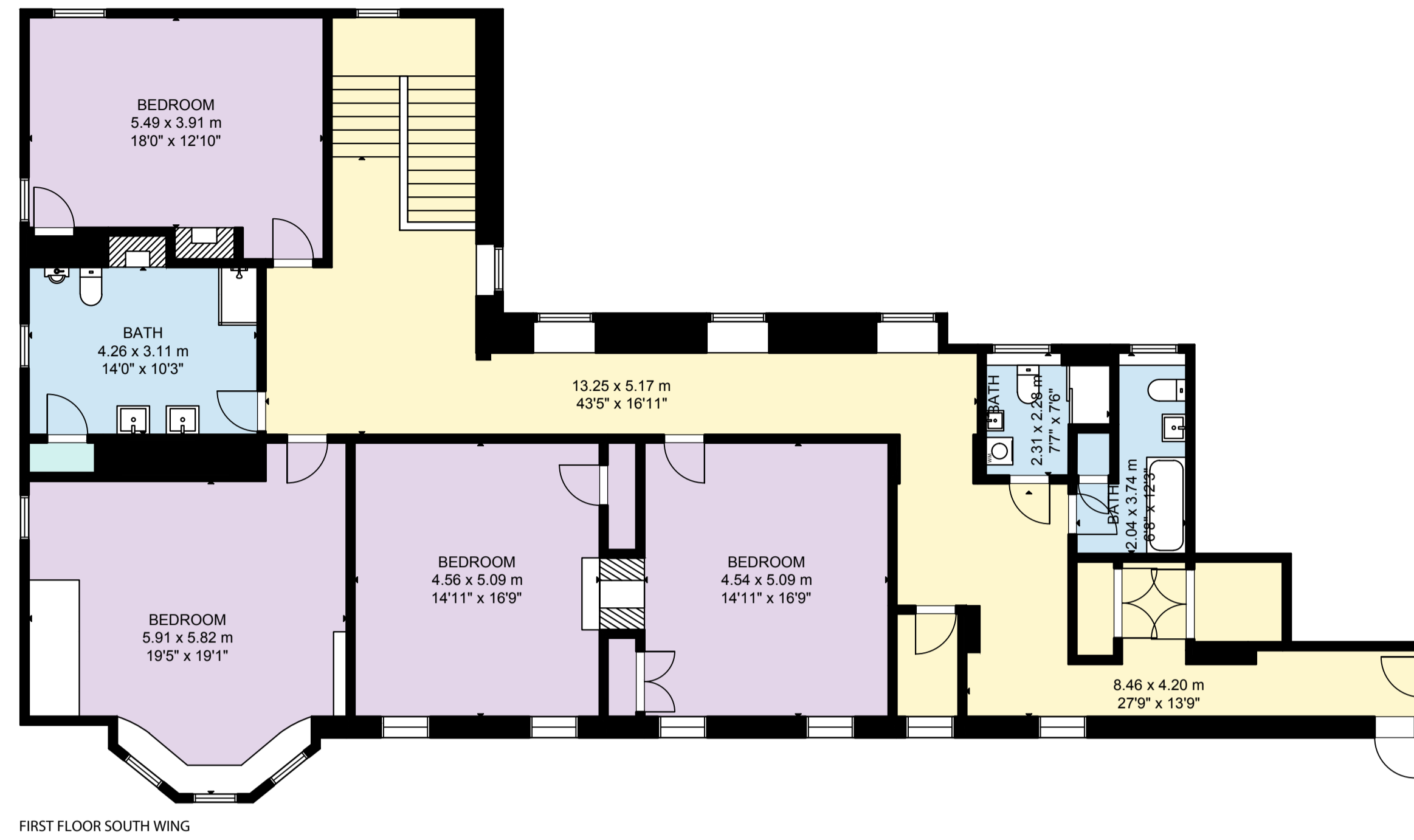
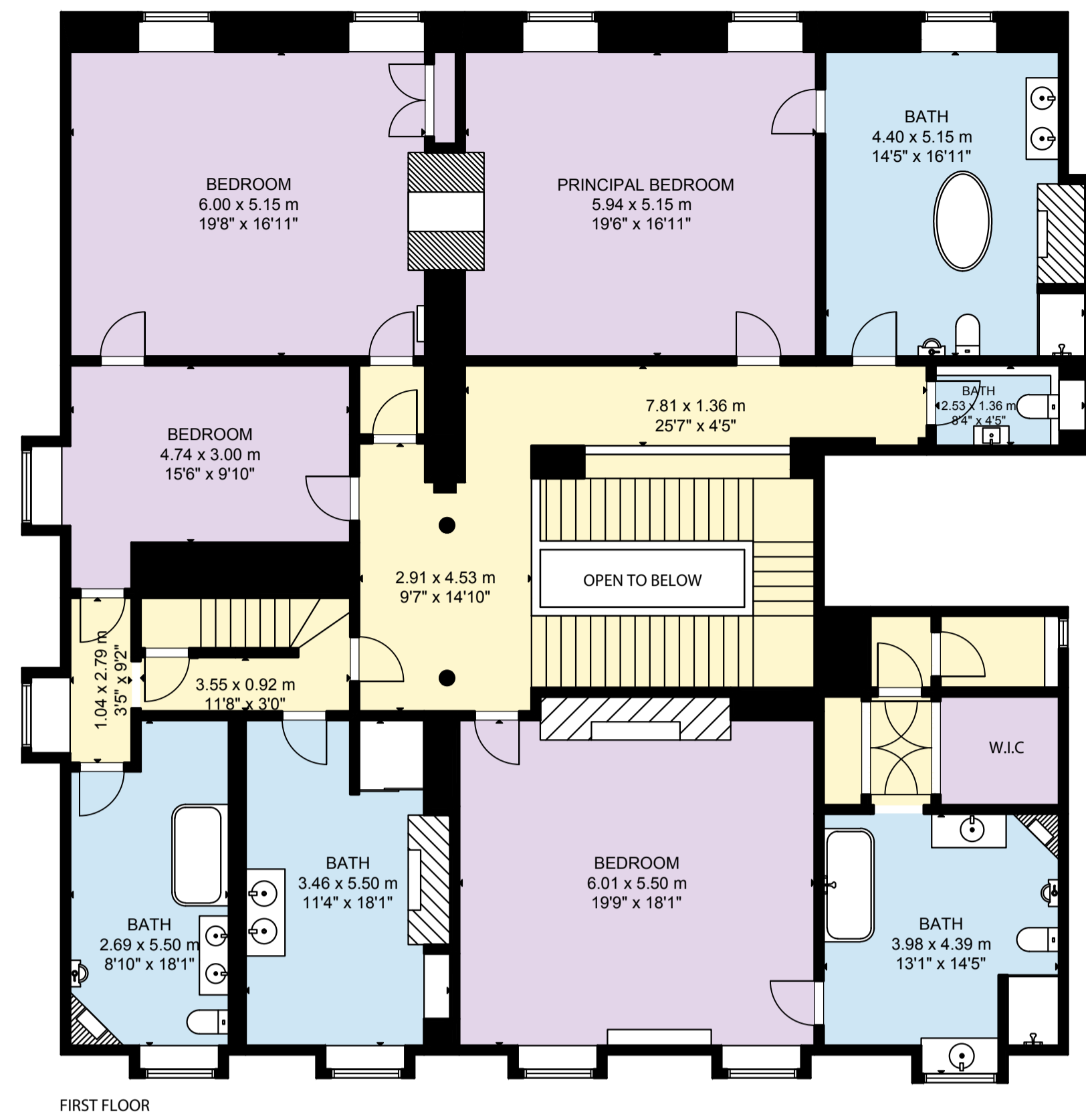
Gardens and Grounds

Moor Place House is surrounded by outstanding gardens and parkland. Beyond the nursery wing to the east and south of the house there is a flagged terrace extending from the loggia and covered veranda. This is separated from the sunken lawns below by rose beds and a low wall. The lawns stretch out in front of the east side of the house and lead the eye to the parkland beyond, separated by a low wall and punctuated at either end by decorative summer houses or pavilions depicting God and Mammon which were completed in 1936 and are Grade II listed.

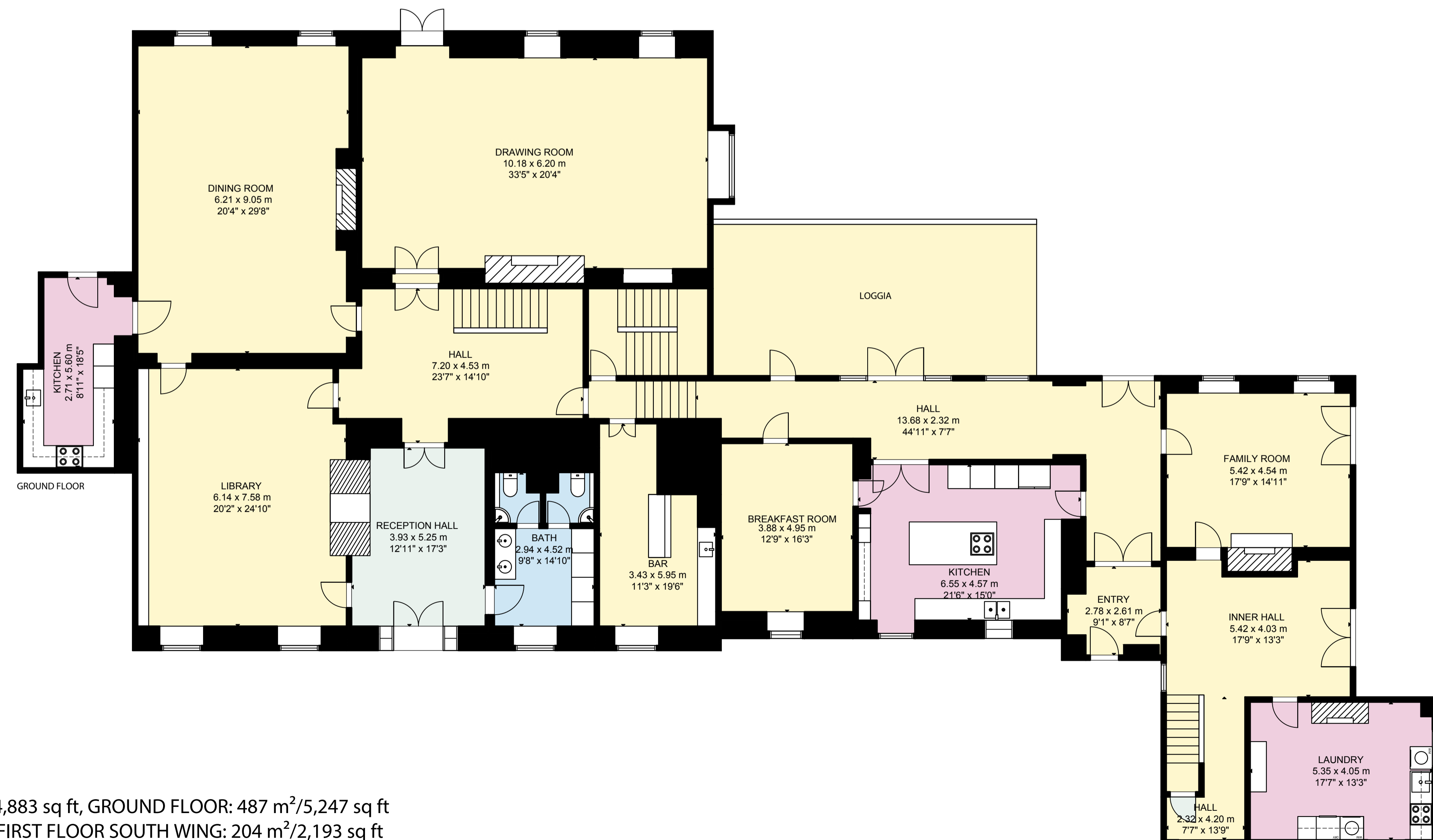
At the northern end of the garden the heated outdoor swimming pool is screened by a Leylandii hedge and wall.

All in about 51 acres.





Moor Place, Much Hadham
 Total Approximate Internal Area: 1633m sq/ 17574 sq ft



LOWER GROUND FLOOR: 454 m²/4,883 sq ft, GROUND FLOOR: 487 m²/5,247 sq ft
 FIRST FLOOR: 276 m²/2,966 sq ft, FIRST FLOOR SOUTH WING: 204 m²/2,193 sq ft
 SECOND FLOOR: 212 m²/2,285 sq ft
 SIZE AND DIMENSIONS ARE APPROXIMATE, ACTUAL MAY VARY.



Knight Frank
Country Department
55 Baker Street
London
W1U 8AN

James Crawford BSc MRICS
+44 20 7861 1065
james.crawford@knightfrank.com

Paddy Pritchard-Gordon
+44 1279 213 343
paddy.pritchard-gordon@knightfrank.com

[knightfrank.co.uk](https://www.knightfrank.co.uk)

Your partners in property