

Gloucester Crescent, Camden NWI

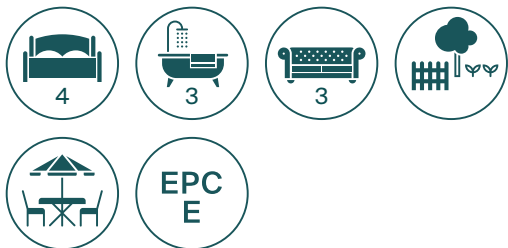






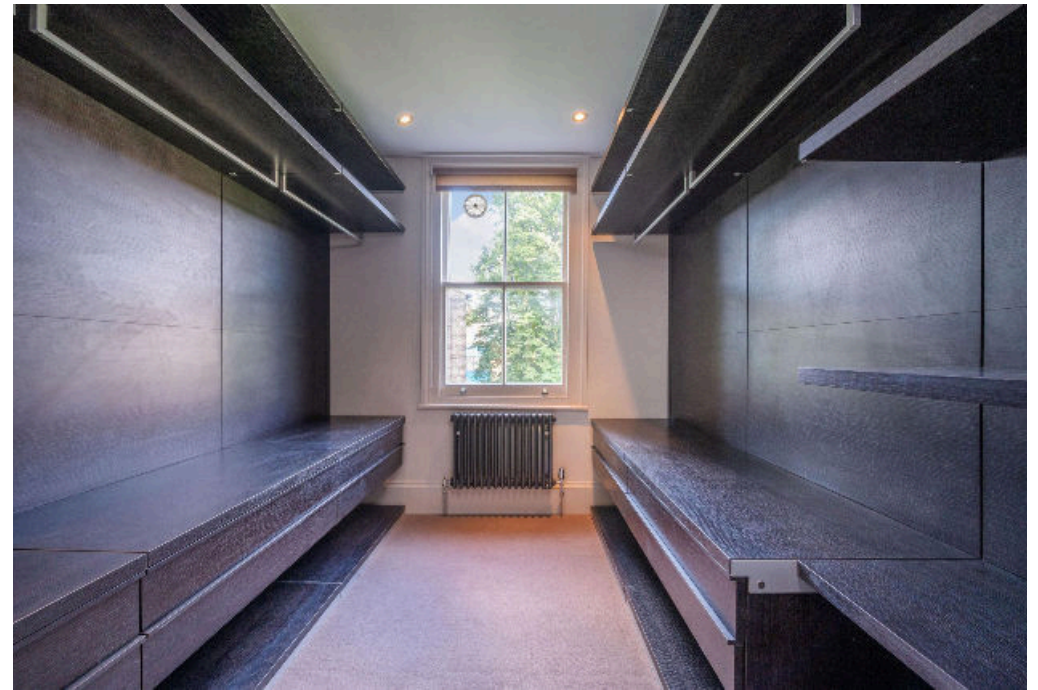
A fantastic 4 bedroom 3 bathroom freehold house with a large garden, situated on a tree-lined street within the Primrose Hill Conservation area.

This wonderful family period home is set behind gates with a charming front garden. On the ground level there is a double reception room, access to the garden from this floor and a guest W/C. On the lower level there is a spacious kitchen and reception room with access to the large private garden, utility room and store room. On the first floor there is a spacious master suite and further double bedroom, whilst on the second floor there is a bedroom that has been converted to a walk in wardrobe and an additional double bedroom and en-suite bathroom, whilst on the top floor there is one final double bedroom, bathroom and guest W/C.



Gloucester Crescent is conveniently located for both the amenities in Primrose Hill and Camden with the open spaces of Regent's Park and Primrose Hill within walking distance. The area is serviced by excellent transport links with Camden Town Underground Station located 0.3 miles away.











Knight Frank
Belsize Park
2C Engels Lane
London
NW3 4TG

[knightfrank.co.uk](https://www.knightfrank.co.uk)

I would be delighted to tell you more.

Orly Lehmann
020 3815 3350
orly.lehmann@knightfrank.com



Connecting people & property, perfectly.

Fixtures and fittings: A list of the fitted carpets, curtains, light fittings and other items fixed to the property which are included in the sale (or may be available by separate negotiation) will be provided by the Seller's Solicitors.

Important Notice: 1. Particulars: These particulars are not an offer or contract, nor part of one. You should not rely on statements by Knight Frank LLP in the particulars or by word of mouth or in writing ("information") as being factually accurate about the property, its condition or its value. Neither Knight Frank LLP nor any joint agent has any authority to make any representations about the property, and accordingly any information given is entirely without responsibility on the part of the agents, seller(s) or lessor(s). 2. Photos, Videos etc: The photographs, property videos and virtual viewings etc. show only certain parts of the property as they appeared at the time they were taken. Areas, measurements and distances given are approximate only. 3. Regulations etc: Any reference to alterations to, or use of, any part of the property does not mean that any necessary planning, building regulations or other consent has been obtained. A buyer or lessee must find out by inspection or in other ways that these matters have been properly dealt with and that all information is correct. 4. VAT: The VAT position relating to the property may change without notice. 5. To find out how we process Personal Data, please refer to our Group Privacy Statement and other notices at <https://www.knightfrank.com/legals/privacy-statement>.

Particulars dated August 2021. Photographs and videos dated August 2021.

Knight Frank is the trading name of Knight Frank LLP. Knight Frank LLP is a limited liability partnership registered in England and Wales with registered number OC305934. Our registered office is at 55 Baker Street, London W1U 8AN where you may look at a list of members' names. If we use the term 'partner' when referring to one of our representatives, that person will either be a member, employee, worker or consultant of Knight Frank LLP and not a partner in a partnership. If you do not want us to contact you further about our services then please contact us by either calling 020 3544 0692, email to marketing.help@knightfrank.com or post to our UK Residential Marketing Manager at our registered office (above) providing your name and address.