

EVERARDS

PRINTWORKS

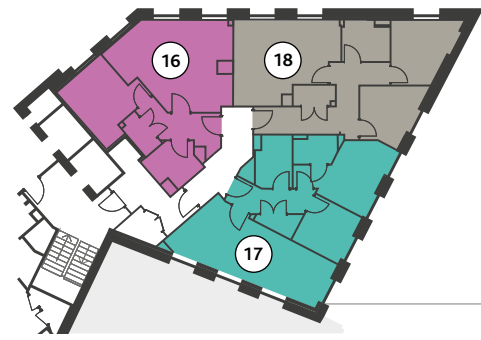
**EVERARDS
COURT**

**18 CONTEMPORARY
1 & 2 BEDROOM APARTMENTS**

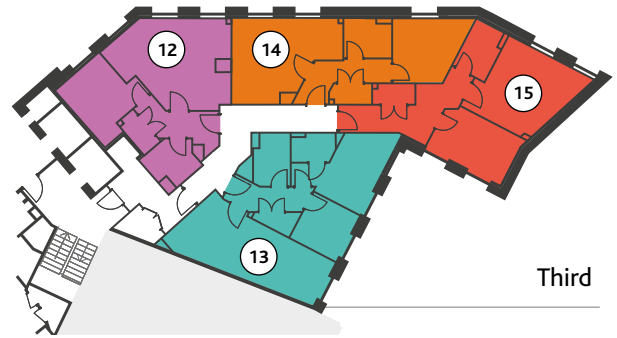
ARTISAN

EVERARDS COURT

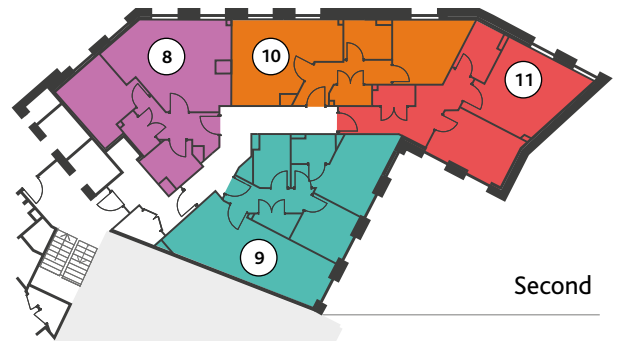
Everards Court is a new community of 18, one and two bedroom apartments at the heart of the Everards Printworks development in Bristol's old city. From ground to fourth floor buyers can select from seven property types, each with a bespoke design and contemporary layout to fit perfectly within the original building. Each property combines living/kitchen space with separate bedroom(s) and bathrooms, the two-bed apartments also boasting an en-suite. The use of space and light offers residents a window to the city.



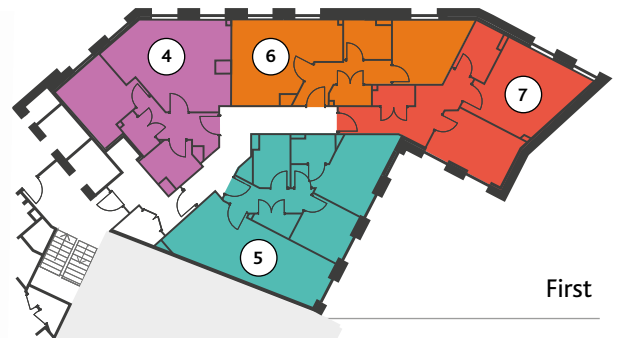
Fourth



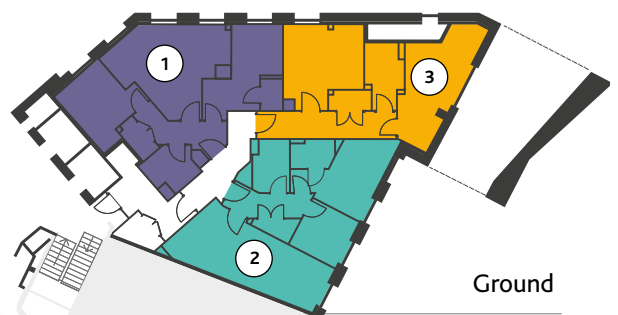
Third



Second



First



Ground



Floor plans are for reference, details may vary

THE APARTMENTS

Type A1 *Apartment No. 1*

Lobby	6.3 m ²
Living/Kitchen	20.8 m ²
Bedroom 1	10.4 m ²
Bedroom 2	11.9 m ²
En-suite	1.6 m ²
Bathroom	4.1 m ²
Heating	2 m ²
Total NIA	57.1 m²



Type A2

Apartment No. 4, 8, 12, 16

	No. 11	No. 21	No. 31	No. 41
Lobby	6.1 m ²	6.1 m ²	6.1 m ²	6.1 m ²
Living/Kitchen	22.8 m ²	23 m ²	23 m ²	23 m ²
Bedroom	10.4 m ²	10.4 m ²	10.4 m ²	10.4 m ²
Bathroom	4.1 m ²	4.1 m ²	4.6 m ²	4.1 m ²
Heating	2 m ²	2 m ²	2 m ²	2 m ²
Total NIA	45.4 m²	45.6 m²	46.1 m²	45.6 m²



Type A3

Apartment No. 2, 5, 9, 13, 17

	No. 2	No. 12	No. 22	No. 32	No. 42
Lobby	5.2 m ²	5.2 m ²	5.2 m ²	5.2 m ²	5.2 m ²
Living/Kitchen	22.5 m ²	22.2 m ²	22.2 m ²	22 m ²	22 m ²
Bedroom 1	12 m ²	12 m ²	12 m ²	12 m ²	10.9 m ²
Bedroom 2	6.8 m ²	6.7 m ²	6.7 m ²	6.7 m ²	6.7 m ²
Bathroom	4.1 m ²	4.1 m ²	4.1 m ²	4.1 m ²	4.1 m ²
En-suite	2.5 m ²	2.6 m ²	2.5 m ²	2.5 m ²	2.5 m ²
Heating	1.7 m ²	1.7 m ²	1.7 m ²	1.7 m ²	1.7 m ²
Total NIA	54.8 m²	54.5 m²	54.4 m²	54.2 m²	53.1 m²



Type A4 *Apartment No.3*

Lobby	9.2 m ²
Living/Kitchen	14.8 m ²
Bedroom	15.4 m ²
Bathroom	5.4 m ²
Heating	2 m ²
Total NIA	46.8 m²



Type A5

Apartment No. 6, 10, 14

	<i>No.13</i>	<i>No.23</i>	<i>No.33</i>
Lobby	6.4 m ²	6.4 m ²	6.4 m ²
Living/Kitchen	18.9 m ²	19.1 m ²	18.7 m ²
Bedroom	10.7 m ²	10.7 m ²	10.7 m ²
Bathroom	4.1 m ²	4 m ²	4.1 m ²
Heating	2 m ²	2 m ²	2 m ²
Total NIA	42.1 m²	42.2 m²	41.9 m²



Type A6

Apartment No. 7, 11, 15

	<i>No.14</i>	<i>No.24</i>	<i>No.34</i>
Lobby	10.8 m ²	10.8 m ²	11 m ²
Living/Kitchen	17.5 m ²	17.6 m ²	17.5 m ²
Bedroom 1	10.5 m ²	10.5 m ²	10.5 m ²
Bathroom	3.9 m ²	3.9 m ²	3.9 m ²
Heating	2 m ²	2 m ²	2 m ²
Total NIA	44.7 m²	44.8 m²	44.9 m²



Type A7 *Apartment No. 18*

Lobby	11.9 m ²
Living/Kitchen	19.5 m ²
Bedroom 1	9.1 m ²
Bedroom 2	7.9 m ²
Bathroom	4.1 m ²
Heating	2 m ²
Total NIA	54.5 m²





These are a computer generated images. Details may vary

EVERARDS

PRINTWORKS



SALES ENQUIRIES

Office: Regent House, 27A Regent Street,
Clifton, Bristol BS8 4HR

Tel: 0117 317 1974

Email: bristolnewhomes@knightfrank.com

ARTISAN



EVERARDSPRINTWORKS.COM

Disclaimer: We have done our very best to provide information to you that is accurate and honest at the time of print. The information should not be relied upon as a basis to enter into any contractual purchase commitment. Given the nature of any off-plan development, the images have been computer generated and are for indicative and illustrative purposes only. The specification included may change during the course of the construction period and could be subject to market conditions, such as availability of materials. If there is anything you are uncertain about, please raise a query in writing with your solicitor.

Designed and Produced by www.kubiakcreative.com 225238 07/22