



HOPE CHAPEL

APARTMENTS

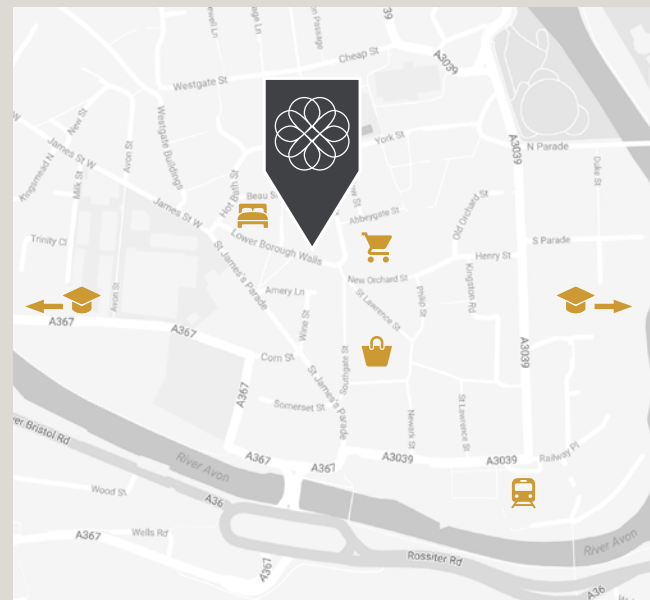


CGI and photo hybrid

THE DEVELOPMENT

HOPE CHAPEL APARTMENTS IS A NEW DEVELOPMENT OF EIGHT APARTMENTS AND ONE HOUSE BY BATH-BASED DEVELOPERS, KERSFIELD.

In the central shopping area of Bath City Centre, opposite The Gainsborough, Bath's newest 5 star hotel, Hope Chapel Apartments will be a welcome addition to the Lower Borough Walls area overlooking the green public space and Chapel Arts Centre.



-  Bath Spa Railway Station (0.2 miles)
-  Marks and Spencer (350 ft)
-  The Gainsborough (400 ft)
-  Southgate Shopping Centre (400 ft)
-  University of Bath (2 miles)
-  Bath Spa University (4.5 miles)

Lower Borough Walls, Bath BA1 1QU

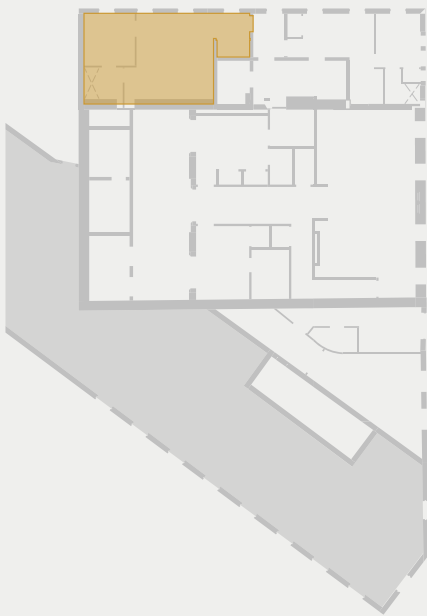
THE APARTMENTS

*A collection of four studio and one bedroom
apartments in central Bath*

APARTMENT LOCATIONS

FIRST FLOOR

SECOND FLOOR



APARTMENT 3

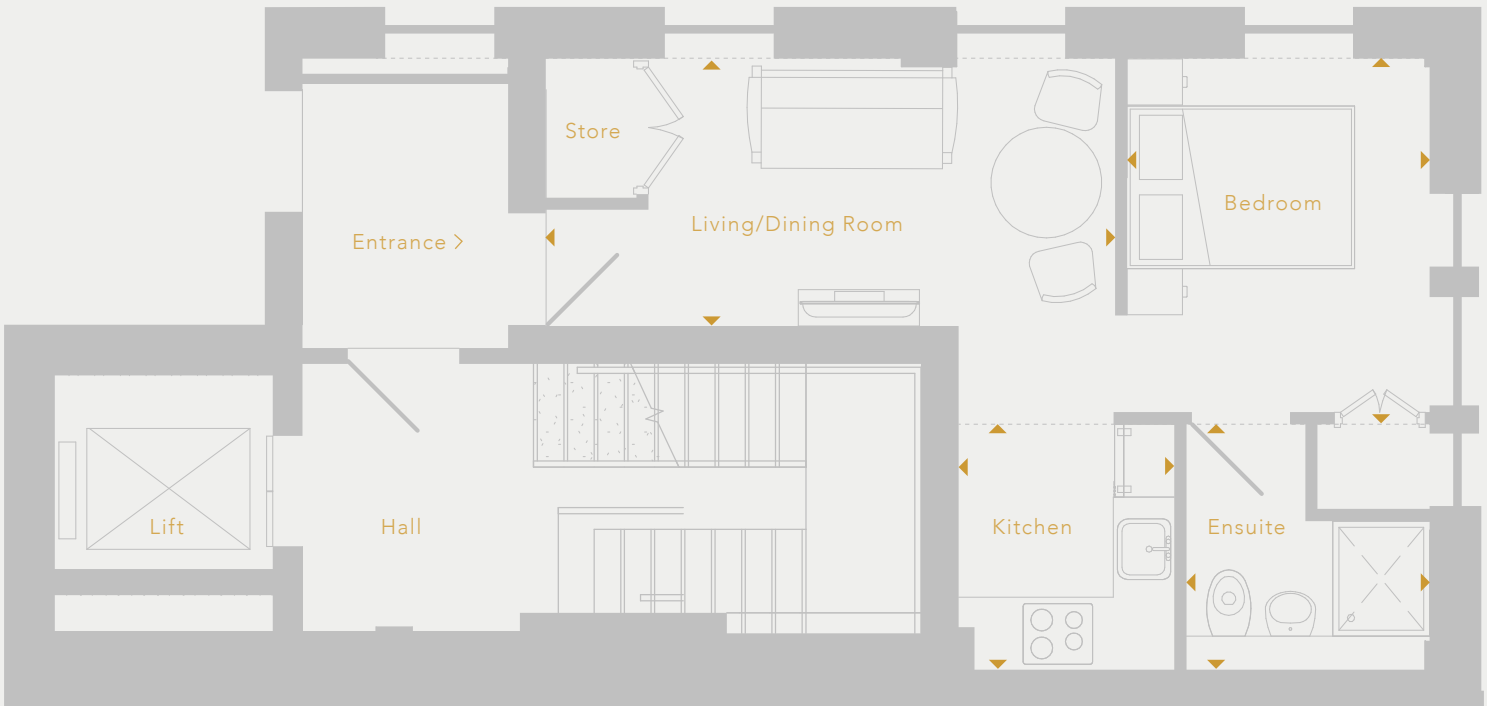
APARTMENT 4

APARTMENT 5

APARTMENT 6



APARTMENT 3

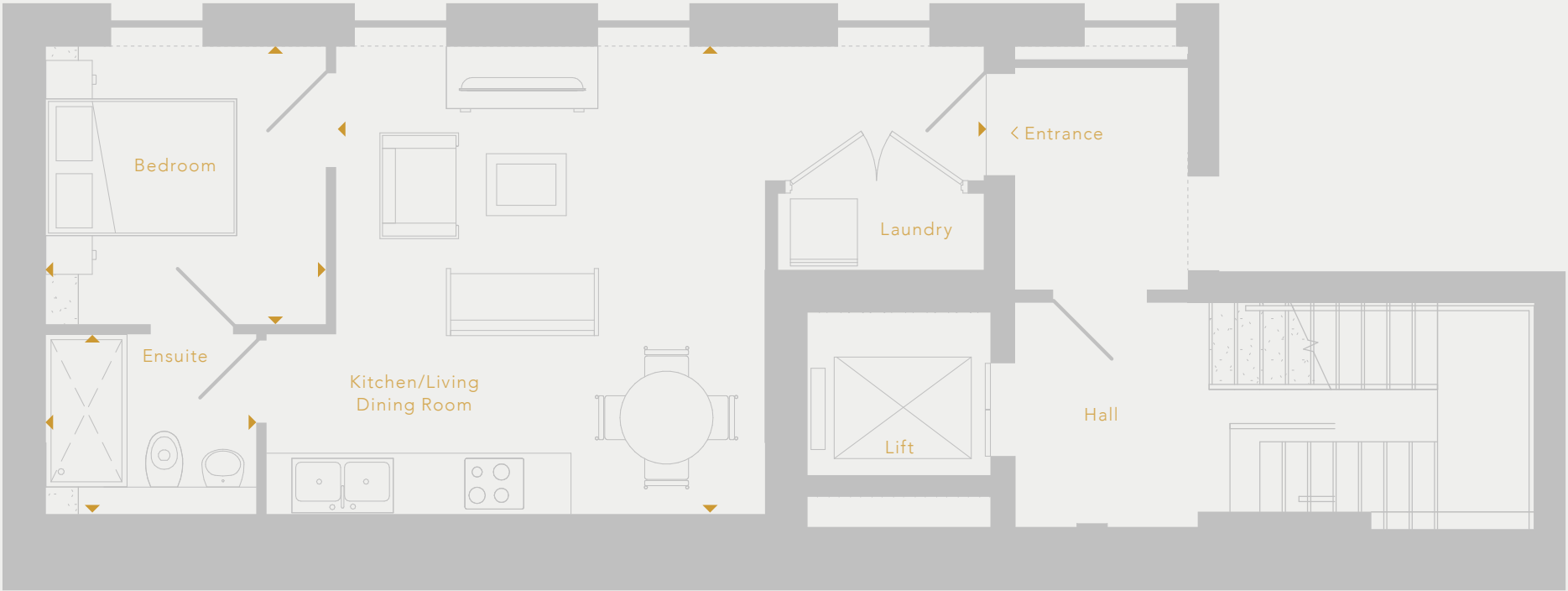


Apartment 3

	Sq Ft	Sq M
Living/Dining Room	15'5" x 7'3"	4.7 x 2.2
Bedroom	9'7" x 8'2"	2.9 x 2.5
Ensuite	6'8" x 6'7"	2.0 x 2.0
Kitchen	6'8" x 5'10"	2.0 x 1.7
Net internal area	323 sq ft	30 sq m

Measurements are approximate and prepared from preliminary plans. Awaiting PEA's.
These may change during construction and final finishes, dimensions and areas could vary.

APARTMENT 4



Apartment 4

Kitchen/Living
Dining Room

Sq Ft

20'11" x 15'1"

Sq M

6.3 x 4.6

Bedroom

9'1" x 9'0"

2.7 x 2.7

Ensuite

6'0" x 5'10"

2.0 x 1.7

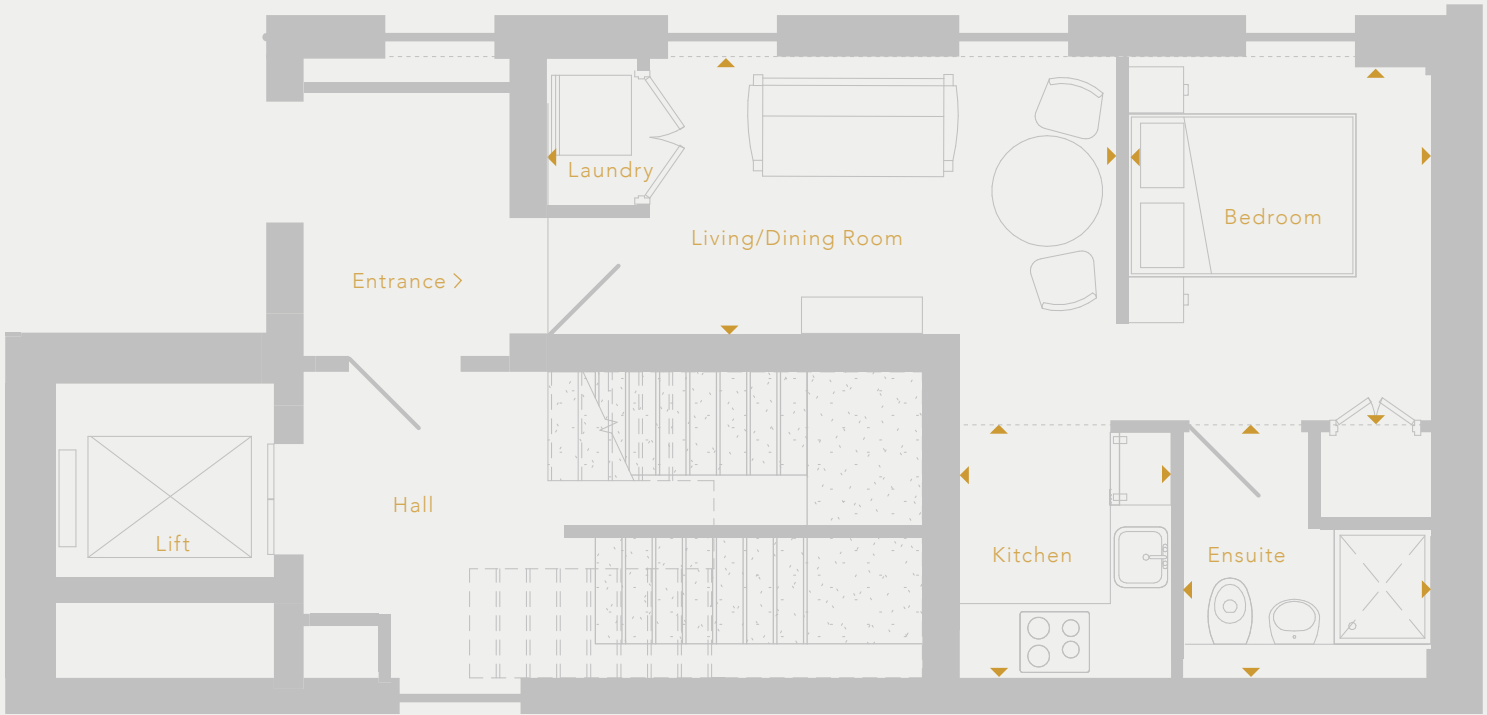
Net internal area

446 sq ft

41 sq m

Measurements are approximate and prepared from preliminary plans. Awaiting PEA's.
These may change during construction and final finishes, dimensions and areas could vary.

APARTMENT 5

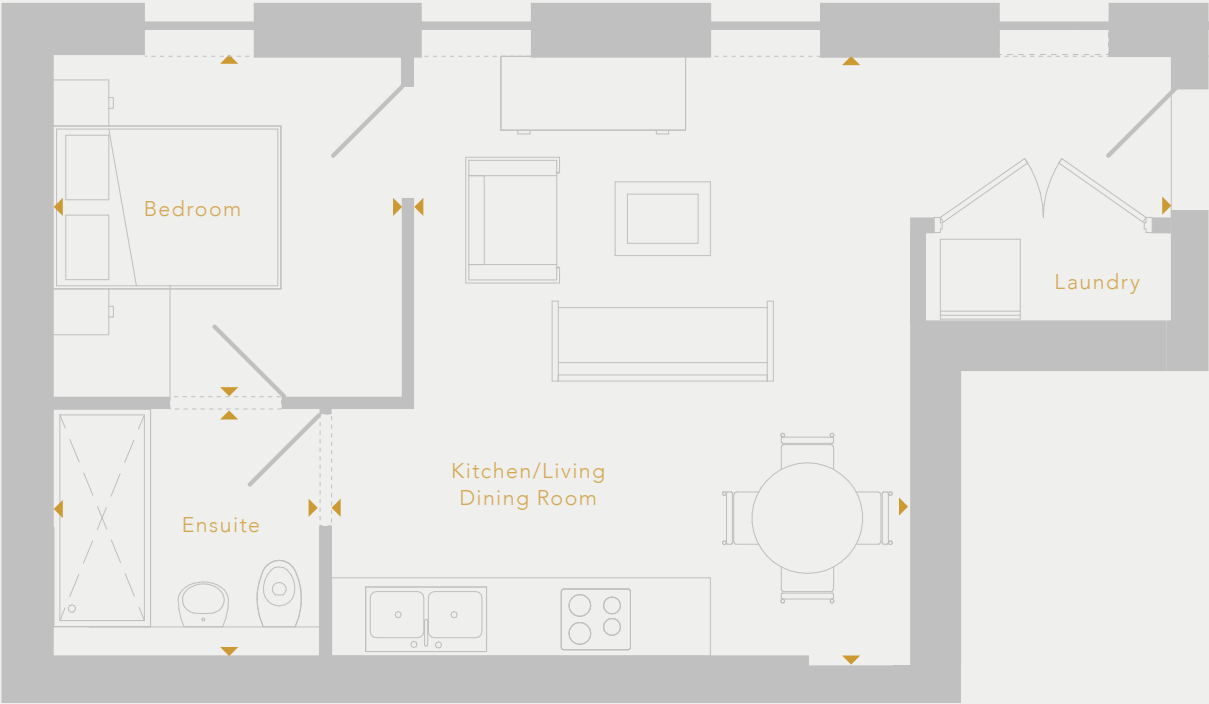


Apartment 5

	Sq Ft	Sq M
Living/Dining Room	15'5" x 7'3"	4.7 x 2.2
Bedroom	9'7" x 8'2"	2.9 x 2.5
Ensuite	6'9" x 6'8"	2.0 x 2.0
Kitchen	6'8" x 5'9"	2.0 x 1.7
Net internal area	325 sq ft	30 sq m

Measurements are approximate and prepared from preliminary plans. Awaiting PEA's.
These may change during construction and final finishes, dimensions and areas could vary.

APARTMENT 6



Apartment 6

Kitchen/Living
Dining Room

Sq Ft

20'6" x 16'7"

Sq M

6.2 x 5.0

Bedroom

9'5" x 9'3"

2.8 x 2.8

Ensuite

7'3" x 6'8"

2.1 x 2.0

Net internal area

483 sq ft

45 sq m

Measurements are approximate and prepared from preliminary plans. Awaiting PEA's.
These may change during construction and final finishes, dimensions and areas could vary.

SPECIFICATION

APARTMENTS 3 & 5

FEATURES

- Light oak wide plank engineered timber floor to kitchen, living/dining room and bedroom
- Flush doors with satin finish chrome door furniture
- Contemporary mouldings and joinery
- Soft white Farrow and Ball colour scheme

KITCHENS

- Italian matt white slab doors with integrated handles
- Grey Quartz stone worktop and splashback
- Siemens oven and induction hob
- Caple undercounter fridge with ice box
- Stainless steel taps and undermounted basin
- Separate laundry cupboard with Bosch combined washer/dryer

BATHROOMS

- Tiled shower enclosure with large overhead shower and handheld function
- Ceramic tiled shower area and floor
- White sanitary ware
- Chrome brassware including heated towel rail
- Vanity cabinet below basin
- Underfloor heating
- Wall hung mirrored storage cabinet over basin

EXTERIOR

- Secure entry system
- Lift and staircase to all floors

Important note:

This specification has been prepared from preliminary information and is subject to change. Please check the current specification with the sales agent at time of reservation. Awaiting PEA's.

SPECIFICATION

APARTMENTS 4 & 6

FEATURES

- Light oak wide plank engineered timber floor to kitchen and living/dining room
- Wool blend carpet to bedroom
- Flush doors with satin finish chrome door furniture
- Contemporary mouldings and joinery
- Soft white Farrow and Ball colour scheme

KITCHENS

- Italian matt white slab doors with integrated handles
- Grey Quartz stone worktop and splashback
- Siemens oven and induction hob
- Caple undercounter fridge with ice box
- Stainless steel taps and undermounted basin
- Separate laundry cupboard with Bosch combined washer/dryer
- Integrated slimline dishwasher

BATHROOMS

- Tiled shower enclosure with large overhead shower and handheld function
- Ceramic tiled shower area and floor
- Chrome brassware including heated towel rail
- Vanity cabinet below basin
- Underfloor heating

EXTERIOR

- Secure entry system
- Lift and staircase to all floors

Important note:

This specification has been prepared from preliminary information and is subject to change. Please check the current specification with the sales agent at time of reservation. Awaiting PEA's.

CONTACT

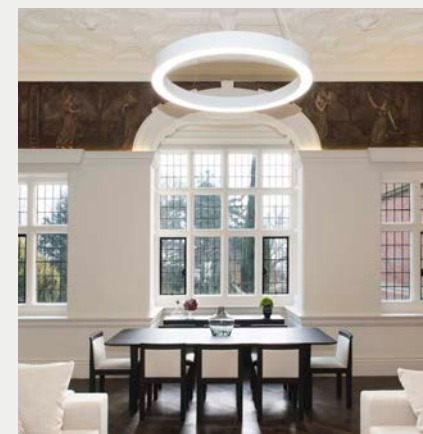
For further information and latest availability please contact the agents:



Anna Fairman
AFairman@Savills.com
0117 910 0317



James Dredge
James.Dredge@knightfrank.com
01225 325 999



A selection of Kersfield developments

Savills, Knight Frank and their clients give notice that they are not authorised to make or give any representations or warranties in relation to the property either here or elsewhere, either on their own behalf, on behalf of their client or otherwise.

They assume no responsibility for any statement that may be made in these particulars. These particulars do not form part of any offer or contract and must not be relied upon as statements or representations of fact.

These particulars were prepared from preliminary plans and specifications before the completion of the properties and therefore the specification may be changed during construction and final finishes could vary. Any areas, measurements or distances are approximate. Plans are indicative only and not to scale. The text, images and plans are for guidance only and are not necessarily comprehensive. It should not be assumed that the property has all necessary planning, building regulation or other consents and the agents have not tested any services, equipment or facilities. Purchasers must satisfy themselves by inspection or otherwise.

Whilst every effort has been made to ensure that the information contained in this document is correct, it is designed specifically as a guide and Kersfield reserves the right to amend the specification as necessary and without notice. This does not form any part of a contract of sale. Prospective purchasers should not rely on this information but must instruct their solicitor to check the plans and specification attached to their contract. September 2017.



HOPE CHAPEL

APARTMENTS

KERSFIELD

