

# Chestnut Cottage & Chestnut Forge

## Burton, Wiltshire

Gross Internal Area (Approx.)

Chestnut Cottage = 221 sq m / 2,387 sq ft

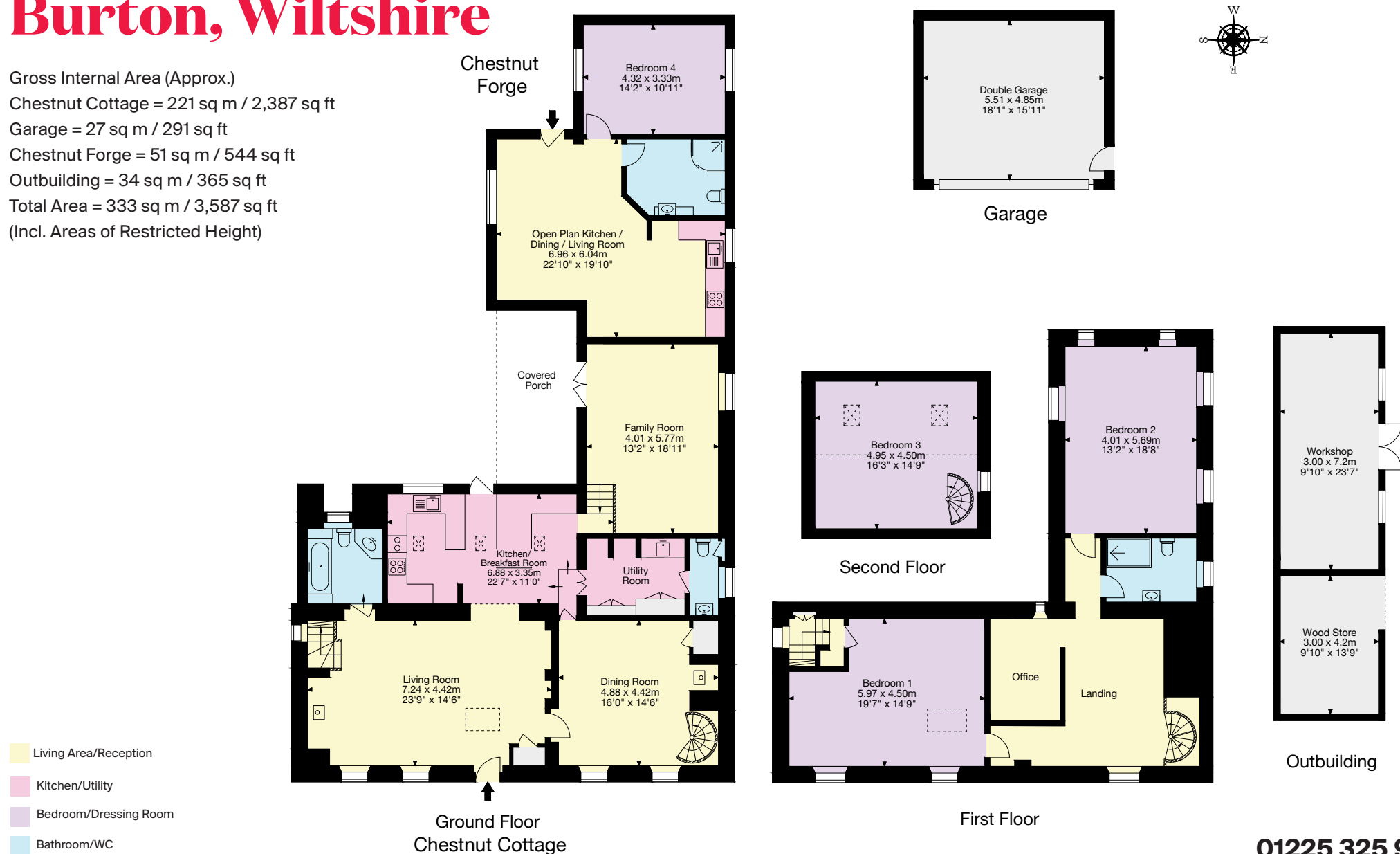
Garage = 27 sq m / 291 sq ft

Chestnut Forge = 51 sq m / 544 sq ft

Outbuilding = 34 sq m / 365 sq ft

Total Area = 333 sq m / 3,587 sq ft

(Incl. Areas of Restricted Height)



Important Notice: This plan is not to scale (unless specified), is for guidance only and must not be relied upon as a statement of fact. All measurements and areas are approximate only (and have been prepared in accordance with the current edition of the RICS Code of Measuring Practice). Please read the Important Notice on the last page of text of the particulars. © Capture Property Marketing 2025.

**01225 325 999**

4 Wood Street, Queen Square  
Bath BA1 2JQ  
bath@knightfrank.com