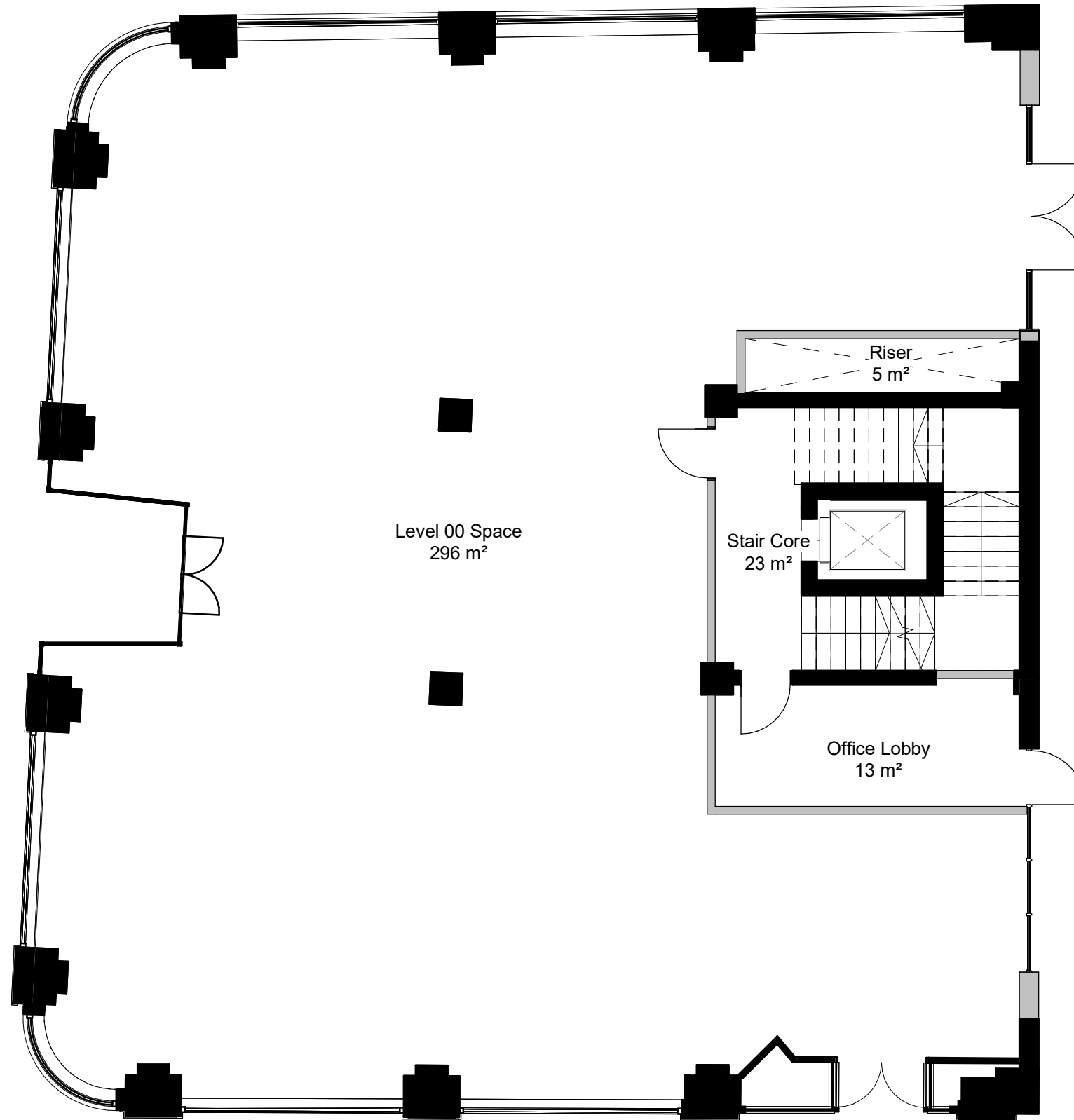


ST MARY'S STREET



WHARTON STREET

**Notes:**  
 © Rio Architects Ltd.  
 This drawing is copyright and must not be reproduced or disclosed to third parties without the prior written consent of Rio Architects Ltd.

Do not scale this drawing. Responsibility is not accepted by Rio Architects Ltd for errors made by others during the printing or scaling of this drawing. Use only written dimensions. It is the contractor's responsibility to verify all dimensions before commencing any work. Any discrepancies are to be notified in writing to Rio Architects Ltd immediately.

This drawing is to be read in conjunction with all other relevant project drawings, specifications and schedules prepared by Rio Architects Ltd and any other relevant consultants, specialists or subcontractors.

CDM notes are provided to assist the contractor in managing residual hazards identified during the design stage. Any such notes do not relieve the contractor of their duties under all relevant CDM Regulations.

**DRAFT**

**Drawing Notes**  
 Proposals are subject to input and advice from M&E engineer, Fire engineer, structural engineer and heritage specialists.

Areas and Dimensions shown are approximates.

Existing items are displayed as BLACK.  
 Items to be demolished are displayed as RED.  
 Proposed items are displayed as GREY.

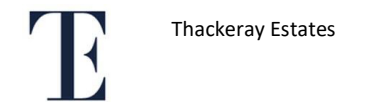
Rev	Description	Rev'd	Chk'd	Date

STATUS: FOR INFORMATION

<b>SUITABILITY NUMBER KEY:</b>	<b>DOCUMENTATION - SIGN-OFF</b>
WIP	A - Fit for construction
S0 - Work in Progress*	B - Fit for construction, with comments
<b>SHARED</b>	C - Comprehensive revisions needed
S1 - Fit for co-ordination**	<b>ARCHIVE</b>
S2 - Fit for information	AB - As Built
S3 - Fit for internal review and comment	FC - Final Construction
S4 - Fit for construction approval	
<b>DOCUMENTATION</b>	
D1 - Fit for costing	
D2 - Fit for tender	* For internal pre-issue usage only.
D3 - Fit for contractor design	** For model file usage only.
D4 - Fit for manufacture/procurement	



Rio Cardiff: 21a Allensbank Road, Cardiff CF14 3PN, +44 (0)29 2025 0066  
 Rio London: 19 21 Hatton Garden, London EC1N 8BA, +44 (0)20 2691 7565



PROJECT TITLE:  
 Howells  
 Cardiff / Caerdydd

DRAWING TITLE:  
 Ground Floor - The Percy Office Option

DRAWN BY: RLD CHECKED BY: CB APPROVED BY: RR

JOB NO: 0428 SCALE: 1 : 100 @ A3

SUITABILITY: S2

DATE: 10/10/23 REVISION:

PROJECT	ORIGIN	VOLUME	LEVEL	TYPE	DISCIP.	NUMBER
0428	RIO	01	00	DR	A	01150