

TO LET

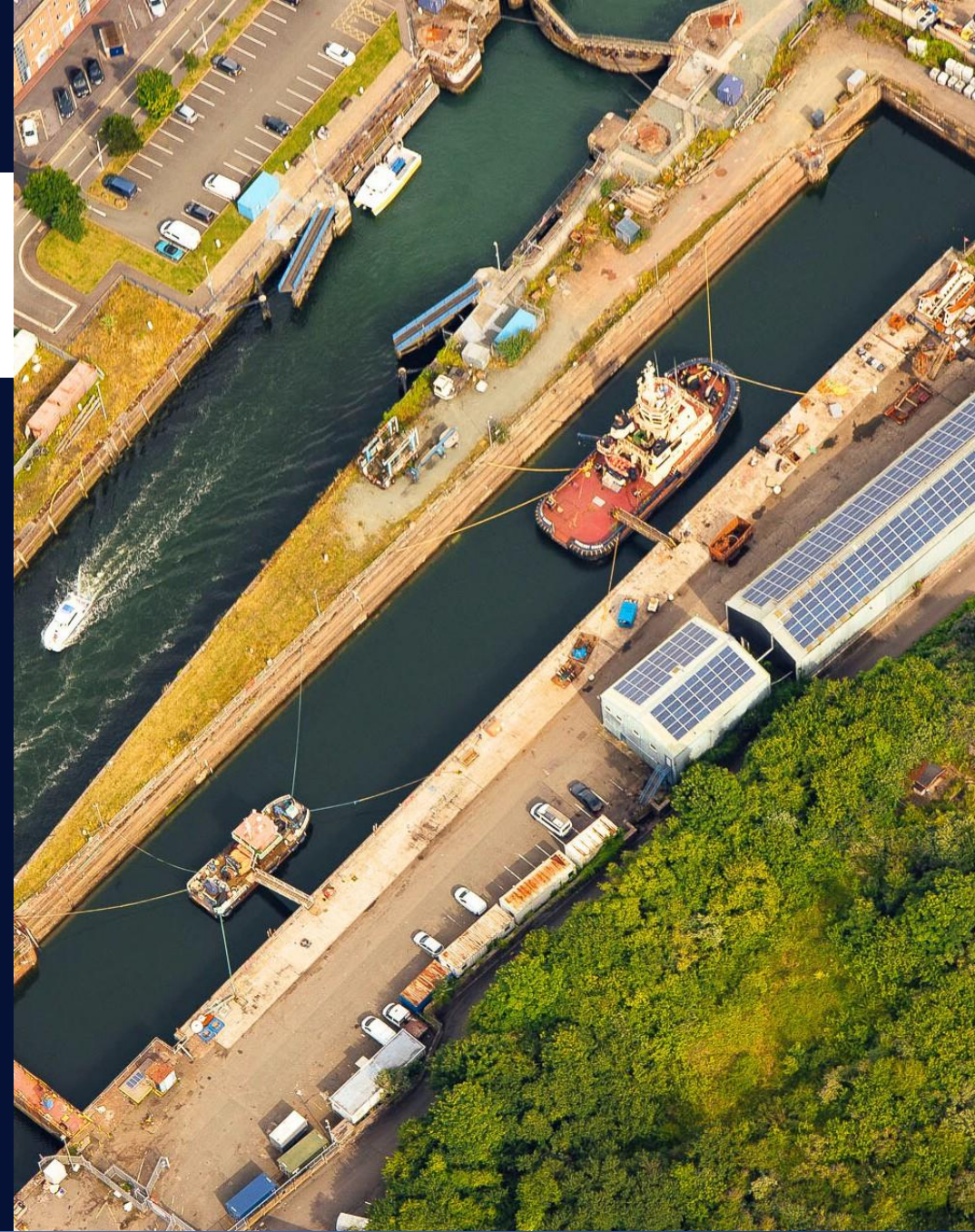
Dry Dock

Heavy Industry



Max Size of Vessel:
70m LOA x 19m Beam

The Dry Dock, The Docks,
Milford Haven, Pembrokeshire,
SA73 3DJ



For more details, please get in touch us on +44(0)29 20 492492
or submit a [contact form enquiry](#).

LOCATION

Situated in Milford Haven, Pembrokeshire, within one of the UK's deepest natural harbours, the Dry Dock is part of the country's leading energy port and a key centre for marine services.

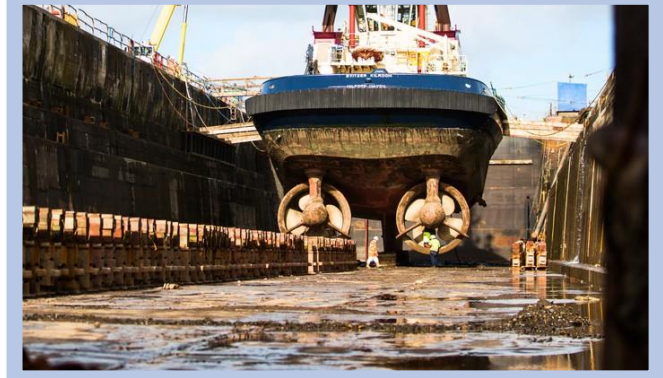
With direct access to Milford Dock's infrastructure and excellent tidal conditions, the site is well connected by road and rail, and lies close to local amenities, marine suppliers, and skilled contractors.

DESCRIPTION

Available from September 2025, this heavy-duty facility accommodates vessels up to 70m LOA and 19m beam, with a control depth of 4.5m and 180m dock face.

Ideal for repairs, refits, and maintenance, it offers on-site power, water, waste disposal, and 24/7 monitored access. Adjoining workshop and office space can also be provided.

Perfect for marine engineering, commercial vessel servicing, yacht refits, and offshore support operations.



TERMS

The unit is available on a new Full Repairing Lease for a Term of years to be agreed.

RENT

Available on request.

RATEABLE VALUE

Details available on request.

SERVICES

We understand that water and electricity are connected to the property.

SERVICE CHARGE

An estate service is charged on a pro rata basis relating to costs incurred in maintaining the common areas of the estate.
Further details available on request.

INSURANCE

The Landlord insures the estate and this is recharged to the tenant.

Further details available on request.

LEGAL COSTS

Each party to bear their own legal and surveyors costs incurred in the transaction.

VAT

VAT is applicable on all costs.

Contact

For further information, or to arrange a viewing, please contact Knight Frank:



RHYS PRICE

07974 366 099
rhys.price@knightfrank.com

KATE MAFFEY

07977 759 501
kate.maffey@knightfrank.com

1. **Particulars:** These particulars are not an offer or contract, nor part of one. Any information about price or value contained in the particulars is provided purely as guidance, it does not constitute a formal valuation and should not be relied upon for any purpose. You should not rely on statements by Knight Frank in the particulars or by word of mouth or in writing ("information") as being factually accurate about the property, its condition or its value. Neither Knight Frank LLP nor any joint agent has any authority to make any representations about the property. No responsibility or liability is or will be accepted by Knight Frank LLP, seller(s) or lessor(s) in relation to the adequacy, accuracy, completeness or reasonableness of the information, notice or documents made available to any interested party or its advisers in connection with the proposed transaction. All and any such responsibility and liability is expressly disclaimed.
2. **Photos, Videos etc:** The photographs, images, property videos and virtual viewings etc. show only certain parts of the property as they appeared at the time they were taken. Areas, measurements and distances given are approximate only.
3. **Regulations:** Any reference to alterations to, or use of, any part of the property does not mean that any necessary planning, building regulations or other consent has been obtained. A buyer or lessee must find out by inspection or in other ways that these matters have been properly dealt with and that all information is correct.
4. **VAT:** The VAT position relating to the property may change without notice.
5. **Financial Crime:** In accordance with the Money Laundering, Terrorist Financing and Transfer of Funds (Information on the Payer) Regulations 2017 and Proceeds of Crime Act 2002 Knight Frank LLP may be required to establish the identity and source of funds of all parties to property transactions.
6. To find out how we process Personal Data, please refer to our Group Privacy Statement and other notices at <https://www.knightfrank.com/legals/privacy-statement>.

Particulars dated July 2025. Photographs dated July 2025.

Knight Frank is the trading name of Knight Frank LLP. Knight Frank LLP is a limited liability partnership registered in England and Wales with registered number OC305934. Our registered office is at 55 Baker Street, London W1U 8AN where you may look at a list of members' names. If we use the term 'partner' when referring to one of our representatives, that person will either be a member, employee, worker or consultant of Knight Frank LLP and not a partner in a partnership.

For more details, please get in touch us on +44(0)29 20 492492
or submit a [contact form enquiry](#).

www.knightfrank.com