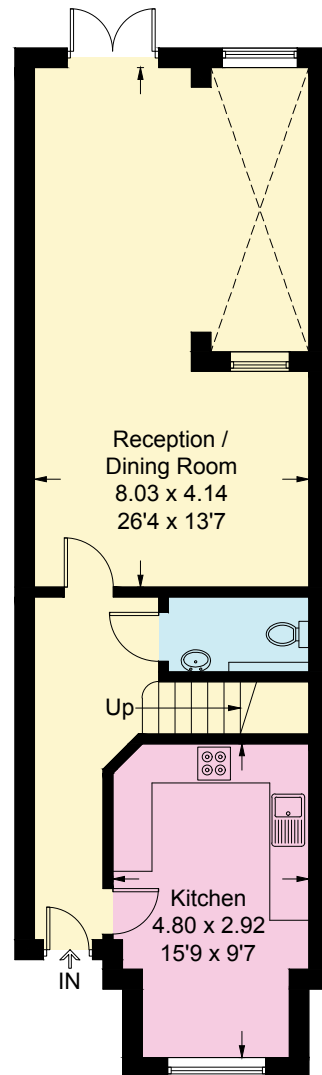


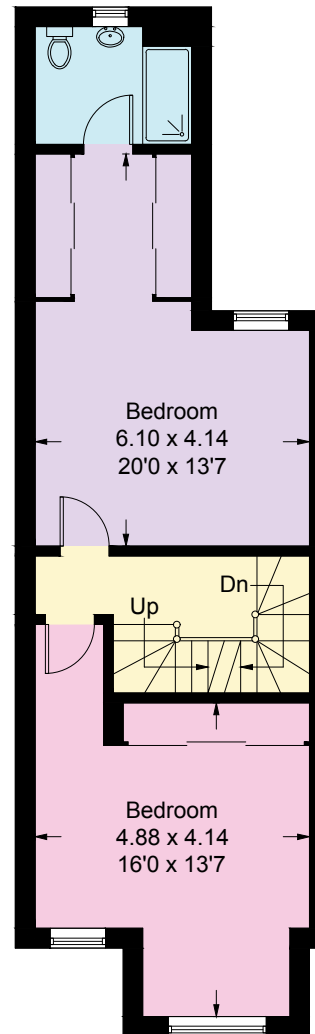
# Tilt Road, KT11



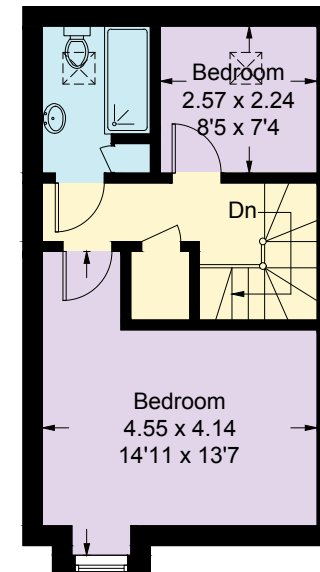
Approximate Gross Internal Area = 150.5 sq m / 1620 sq ft



**Ground Floor**



**First Floor**



**Second Floor**

Measured in accordance with RICS Code of Measuring Practice. To be used for identification and guidance purposes only.  
Whilst every care is taken in the preparation of this plan, please check all dimensions, shapes and compass bearings before making any decisions reliant upon them.  
[www.london58.com](http://www.london58.com) © 2024 [hello@london58.com](mailto:hello@london58.com)