



LAVENDER GATE

Oxshott, KT22



A 5 BEDROOM SEMI-DETACHED FAMILY HOME IN OXSHOTT

Set within a secure gated development in the heart of Oxshott, Lavender Gate is one of the largest homes in this sought-after enclave, offering around 2,158 sq ft of beautifully balanced living space across three floors.



Local Authority: Elmbridge Borough Council

Council Tax band: F

Tenure: Freehold



DESCRIPTION

The elegant, bay-fronted living room leads through to a comfortable family room and a spacious open-plan kitchen/dining room with French doors opening on to the private garden.

Upstairs, generous bedrooms are arranged over two floors, including a superb principal suite with en suite shower room and ample fitted storage. Two further bathrooms and versatile additional bedrooms provide plenty of space for family, guests, or a home office.

The property also benefits from two allocated parking spaces plus visitor parking.











DESCRIPTION

As one of the largest houses in the development, this property presents excellent potential to reconfigure and upgrade, allowing new owners to tailor the space to their own style and needs.

For the commuter, transport links are excellent - a 37-minute train journey from Oxshott mainline station takes you to London Waterloo, whilst the A3 and M25 nearby give easy road access both to central London, the wider motorway network and to Heathrow Airport (about 18 miles) and Gatwick Airport (about 22 miles). Locally, there are 12 independent retail units on Oxshott High Street, 2 family-friendly pubs, a good Italian restaurant, a Church, a thriving scout and guide group and a convenient local medical practice.

A selection of shops and amenities are available in and around Oxshott, Cobham & Esher, with larger shopping centres at Kingston (about 7 miles) and Guildford (about 14 miles). The area has excellent sporting facilities, with several golf clubs and the Oxshott Village Sports Club. Oxshott Heath and Esher Common are both nearby and are excellent for recreation and dog walking.

There is an impressive selection of schools in the area, including Danes Hill School, Royal Kent C of E School in Oxshott, Reed's School in Cobham, Claremont Fan Court in Esher, Rowan Preparatory School in Claygate and St John's in Leatherhead.

The computer generated images shown are for illustrative purposes only and not to be relied upon.





Lavender Gate, KT22

Approximate Gross Internal Area = 180.5 sq m / 1943 sq ft

Reduced Headroom = 20.0 sq m / 215 sq ft

Total = 200.5 sq m / 2158 sq ft

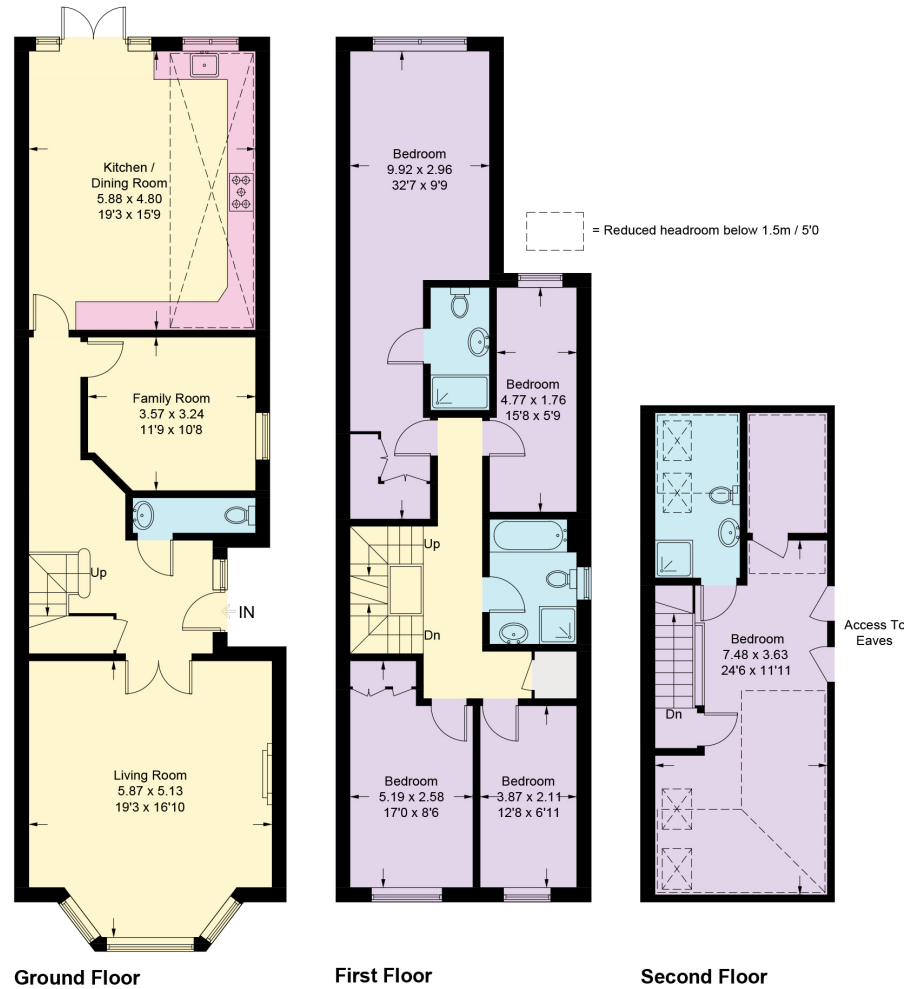


Illustration for identification purposes only, measurements are approximate, not to scale. Fourlabs.co © (ID1252160)

Approximate Gross Internal Area = 200.5 sq m / 2158 sq ft

This plan is for layout guidance only. Not drawn to scale unless stated. Windows and door openings are approximate. Whilst every care is taken in the preparation of this plan, please check all dimensions, shapes and compass bearings before making any decisions reliant upon them. (ID767266)

Dan Miller

01932 591 616

dan.miller@knightfrank.com

Knight Frank Cobham

50 High Street, Cobham

KT11 3EF

knightfrank.co.uk

Your partners in property

1. Particulars: These particulars are not an offer or contract, nor part of one. You should not rely on statements given by Knight Frank in the particulars, by word of mouth or in writing ("information") as being factually accurate about the property, its condition or its value. Neither Knight Frank nor any joint agent has any authority to make any representations about the property, and accordingly any information given is entirely without responsibility on the part of Knight Frank. 2. Material Information: Please note that the material information is provided to Knight Frank by third parties and is provided here as a guide only. While Knight Frank has taken steps to verify this information, we advise you to confirm the details of any such material information prior to any offer being submitted. If we are informed of changes to this information by the seller or another third party, we will use reasonable endeavours to update this as soon as practical. 3. Photos, Videos etc: The photographs, property videos and virtual viewings etc. show only certain parts of the property as they appeared at the time they were taken. Areas, measurements and distances given are approximate only. 4. Regulations etc: Any reference to alterations to, or use of, any part of the property does not mean that any necessary planning, building regulations or other consent has been obtained. A buyer must find out by inspection or in other ways that these matters have been properly dealt with and that all information is correct. 5. Fixtures and fittings: A list of the fitted carpets, curtains, light fittings and other items fixed to the property which are included in the sale (or may be available by separate negotiation) will be provided by the Seller's Solicitors. 6. VAT: The VAT position relating to the property may change without notice. 7. To find out how we process Personal Data, please refer to our Group Privacy Statement and other notices at <https://www.knightfrank.com/legals/privacy-statement>.

Particulars dated November 2025. Photographs and videos dated November 2025. All information is correct at the time of going to print. Knight Frank is the trading name of Knight Frank LLP. Knight Frank LLP is a limited liability partnership registered in England and Wales with registered number OC305934. Our registered office is at 55 Baker Street, London W1U 8AN. We use the term 'partner' to refer to a member of Knight Frank LLP, or an employee or consultant. A list of members names of Knight Frank LLP may be inspected at our registered office. If you do not want us to contact you further about our services then please contact us by either calling 020 3544 0692, email to marketing.help@knightfrank.com or post to our UK Residential Marketing Manager at our registered office (above) providing your name and address.

