



Holtwood Road, Oxshott, Leatherhead, Surrey





An impressive **seven**
bedroom lateral house set in
approximately 0.8 acres in
the heart of Oxshott.



7



6



6



1

EPC

C

Tenure

Freehold

Local Authority

Elmbridge Borough Council

Council Tax

Band H





Holtwood House is presented in superb condition and is located in the heart of Oxshott, very close to Oxshott Station, Oxshott Heath, the Village High Street and local schools.

Set behind twin electric gates with plenty of parking space, this substantial property spans approximately 8500 sq ft over two floors. The garden is approximately 0.8 acre and has been beautifully maintained by the current owners. It provides a real sun trap with its south-westerly facing aspect.

The welcoming entrance hall provides a real sense of arrival and allows you to see straight through into the magnificent garden. There is a guest cloakroom and two large coat cupboards. To the rear, the spectacular open-plan kitchen/family/dining room has large IQ Glass sliding doors and separate bi-folding doors, which provide an abundance of light. It provides the perfect setting for entertaining and relaxing. There is also underfloor heating, a smart wood burner and air conditioning.

The luxury kitchen features a large island with seating space, bespoke cabinetry, gas AGA, separate induction hob, electric oven and microwave and stunning Atlantic Stone worktops. Off the dining area, there is a cosy media room with a built-in sound system. To the rear of the house, there is also a large drawing room with a feature fireplace, accessible from both the hall and the living space.



To the rear of the kitchen are three utility areas with plenty of cupboard space, including a convenient drinks area, a boiler room with a drying rack and a large laundry room with an integrated fridge-freezer. There is also a large double garage with plenty of space for bicycle storage. At the front of the house is a well-appointed office space with views over the front garden.

To the left-hand side of the ground floor, there is an impressive study with air-conditioning and built-in cabinetry, which provides the perfect space for working from home. There is also a show/games room large enough to house comfortably a full-size billiard table. This room contains a superb temperature-controlled wine store. There are separate stairs from this room leading up to a spacious area currently used as a storeroom. The library with fitted bookshelves is also found off the hall and leads through to a large home gym. There is also an additional guest cloakroom.

An elegant, wide, low-rise staircase leads to the large, bright landing, which has plenty of cupboard space. To the right are five spacious bedrooms, three of which have en suite bathrooms. The family bathroom with a jacuzzi bath has two entrance doors and doubles as an en suite.

To the left-hand side of the first floor, you will find one of the best principal bedroom suites you will likely see. The bedroom has air conditioning, a sliding door onto a balcony with far-reaching views over the garden, and bespoke fitted wardrobes. There are two palatial, separate walk-in dressing rooms and stylish bathrooms with underfloor heating and a Laufen wash WC. There is an additional separate bedroom off the suite's hallway, which would be perfect for a young child; this leads to the storeroom.

The house has a comprehensive Control 4 home automation system covering key rooms. This enables lighting, curtains/blinds, heating, ceiling speakers, TVs, intercoms, CCTV, and burglar alarms to be controlled via an app.







The mature garden is breathtaking and has been superbly landscaped and cared for by the current owners. It is very private and well-screened on all sides with mature evergreen hedging. The large sun terrace has a beautiful formal pool, fountain, and underwater lighting. This is a perfect area for entertaining and hosting family barbeques. The formal lawned area and surrounding beds containing shrubs, bulbs, and perennial plants have an automatic app-controlled watering system. The large lower lawned area provides the perfect place for children to play and hides a very large storage shed with power and lighting. There is outside terrace lighting with floodlighting of some trees. There is also a sauna, jacuzzi, additional store to the left-hand side of the house and an external WC to the right-hand side of the house. The garden provides plenty of space to install a swimming pool if desired in the future.

Location

For the commuter, transport links are excellent - a 37-minute train journey from Oxshott mainline station takes you to London Waterloo, whilst the A3 and M25 nearby give easy road access both to central London, the wider motorway network and to Heathrow Airport (about 18 miles) and Gatwick Airport (about 22 miles).

A selection of shops and amenities are available locally in and around Oxshott, Cobham & Esher, with larger shopping centres at Kingston (about 7 miles) and Guildford (about 14 miles). The area has excellent sporting facilities, with several golf clubs and the Oxshott Village Sports Club. In the wider area, racing is available at Ascot, Windsor, Kempton Park and Sandown. Oxshott Heath and Esher Common are both nearby and are excellent for recreation and dog walking.

There is an impressive selection of schools in the area, including Danes Hill School in Oxshott, Reed's School in Cobham, Claremont Fan Court in Esher, Rowan Preparatory School in Claygate and St John's in Leatherhead.

Distances

Cobham 3 miles, Esher 3 miles, Guildford 14 miles, London 20 miles (all distances are approximate).





Approximate Gross Internal Floor Area

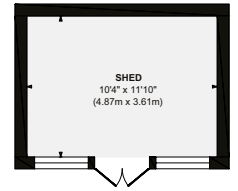
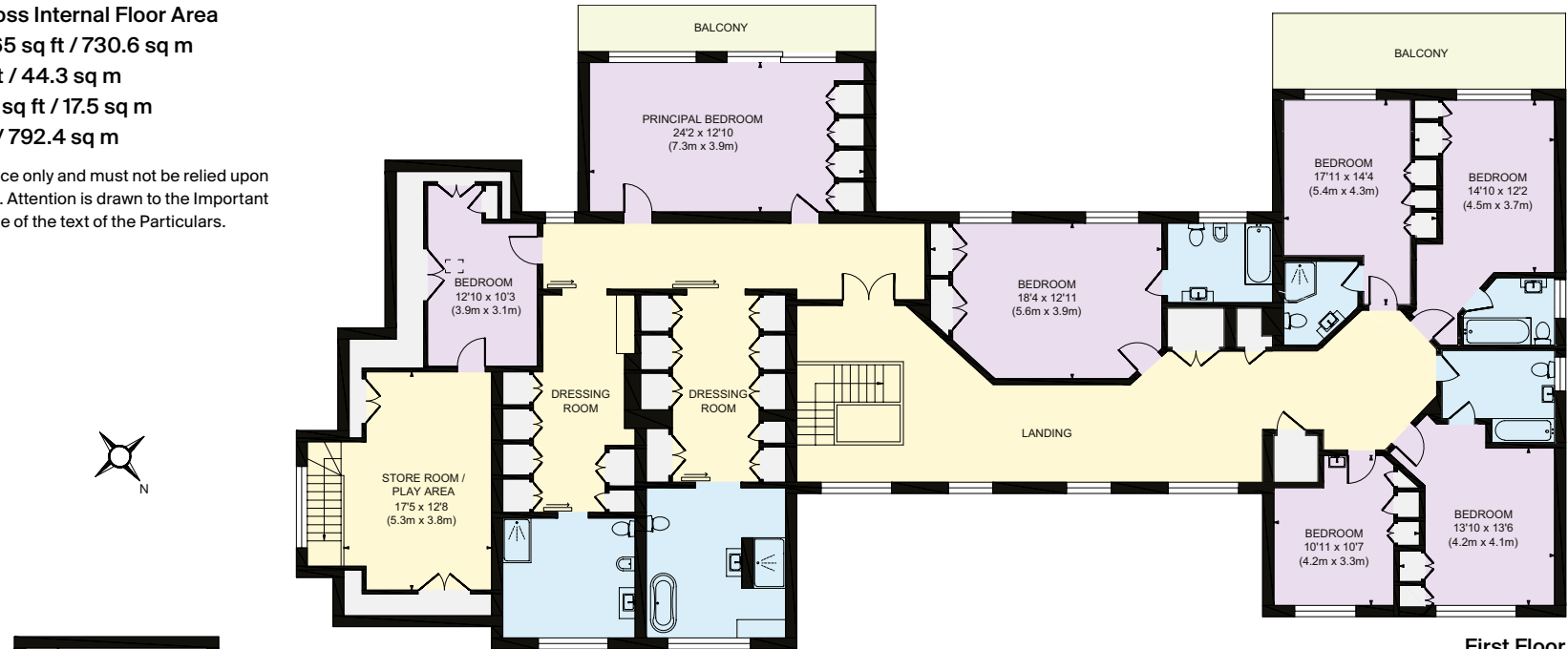
Main House: 7865 sq ft / 730.6 sq m

Garage: 477 sq ft / 44.3 sq m

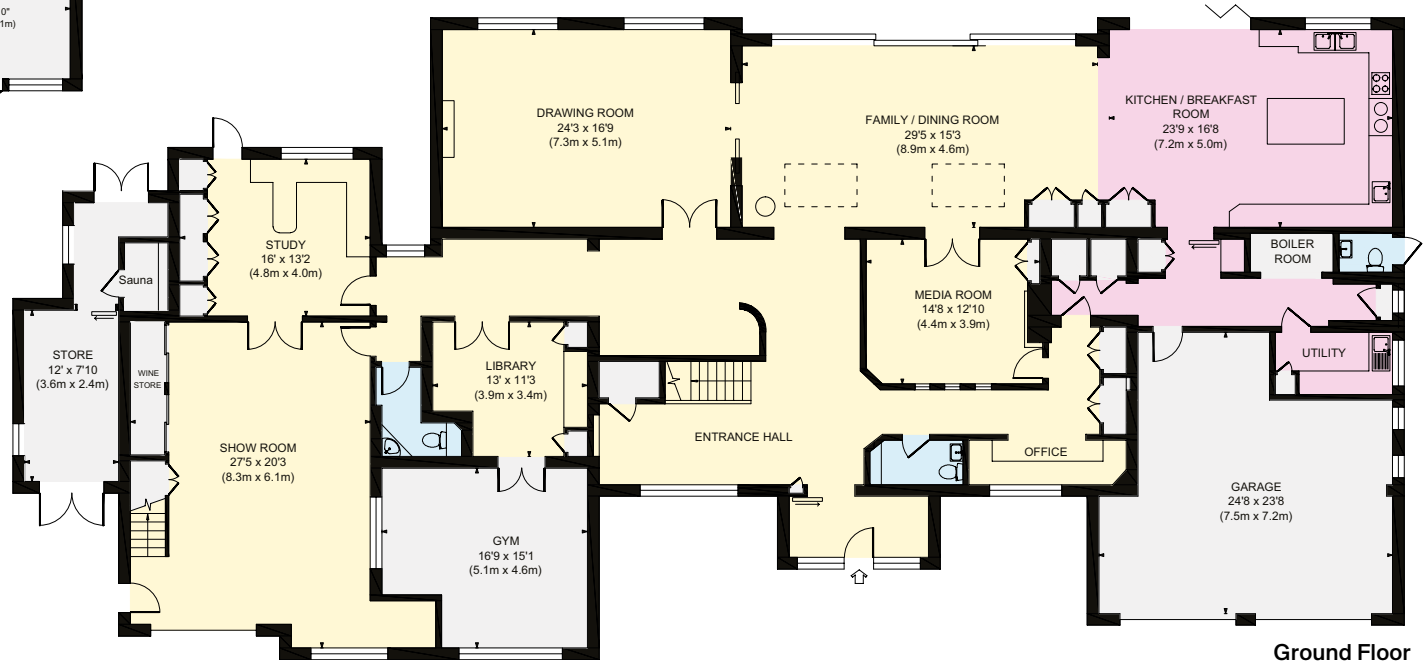
Outbuilding: 189 sq ft / 17.5 sq m

Total: 8531 sq ft / 792.4 sq m

This plan is for guidance only and must not be relied upon as a statement of fact. Attention is drawn to the Important Notice on the last page of the text of the Particulars.



Outbuilding



Ground Floor

- Reception
- Bedroom
- Bathroom
- Kitchen/Utility
- Storage
- Outside



Knight Frank Cobham
50 High Street
Cobham, Surrey
KT11 3EF
knightfrank.co.uk

I would be delighted to tell you more

Dan Miller
01932 591616
dan.miller@knightfrank.com

Tom Knowlden
01932 591610
tom.knowlden@knightfrank.com



Fixtures and fittings: A list of the fitted carpets, curtains, light fittings and other items fixed to the property which are included in the sale (or may be available by separate negotiation) will be provided by the Seller's Solicitors.

Important Notice: 1. Particulars: These particulars are not an offer or contract, nor part of one. You should not rely on statements by Knight Frank LLP in the particulars or by word of mouth or in writing ("information") as being factually accurate about the property, its condition or its value. Neither Knight Frank LLP nor any joint agent has any authority to make any representations about the property, and accordingly any information given is entirely without responsibility on the part of the agents, seller(s) or lessor(s). 2. Photos, Videos etc: The photographs, property videos and virtual viewings etc. show only certain parts of the property as they appeared at the time they were taken. Areas, measurements and distances given are approximate only. 3. Regulations etc: Any reference to alterations to, or use of, any part of the property does not mean that any necessary planning, building regulations or other consent has been obtained. A buyer or lessee must find out by inspection or in other ways that these matters have been properly dealt with and that all information is correct. 4. VAT: The VAT position relating to the property may change without notice. 5. To find out how we process Personal Data, please refer to our Group Privacy Statement and other notices at <https://www.knightfrank.com/legals/privacy-statement>. Particulars dated September 2024. Photographs and videos dated August 2024.

All information is correct at the time of going to print. Knight Frank is the trading name of Knight Frank LLP. Knight Frank LLP is a limited liability partnership registered in England and Wales with registered number OC305934. Our registered office is at 55 Baker Street, London W1U 8AN. We use the term "partner" to refer to a member of Knight Frank LLP, or an employee or consultant. A list of members names of Knight Frank LLP may be inspected at our registered office. If you do not want us to contact you further about our services then please contact us by either calling 020 3544 0692, email to marketing.help@knightfrank.com or post to our UK Residential Marketing Manager at our registered office (above) providing your name and address. Brochure by wordperfectprint.com

