

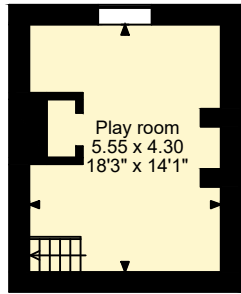
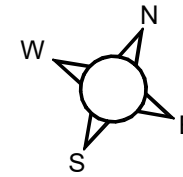
Old Cider House, Main Road, Bredon, Tewkesbury

APPROXIMATE GROSS INTERNAL FLOOR AREA

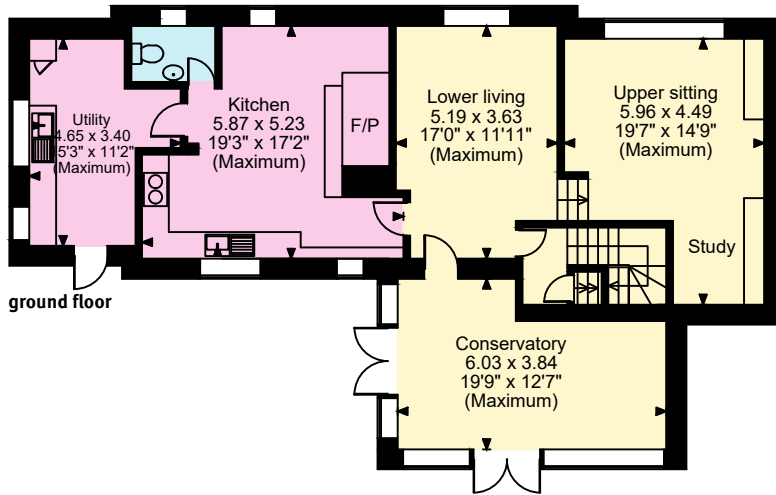
Main House = 238sq.m (2,567sq.ft)

Barn Building = 186sq.m (2,004sq.ft)

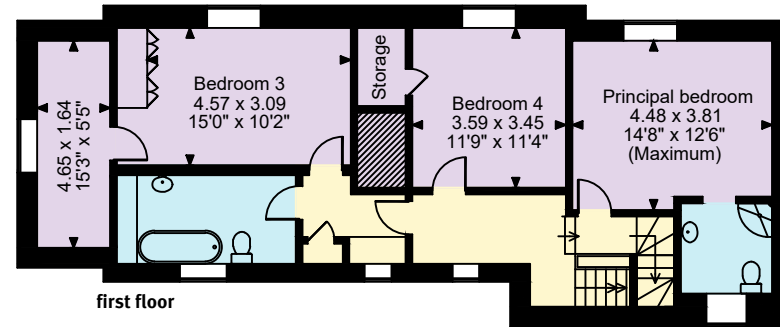
Total = 425sq.m (4,571sq.ft)



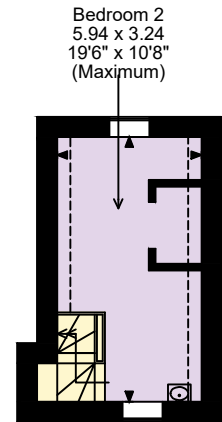
basement



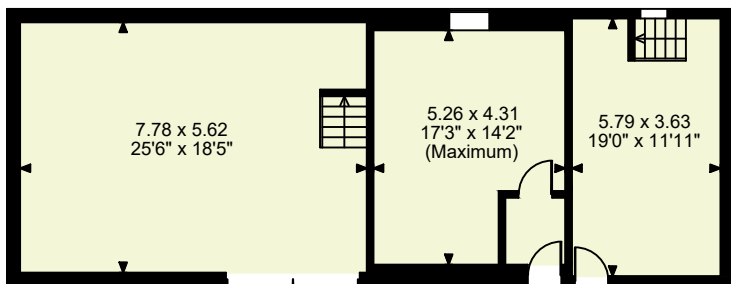
ground floor



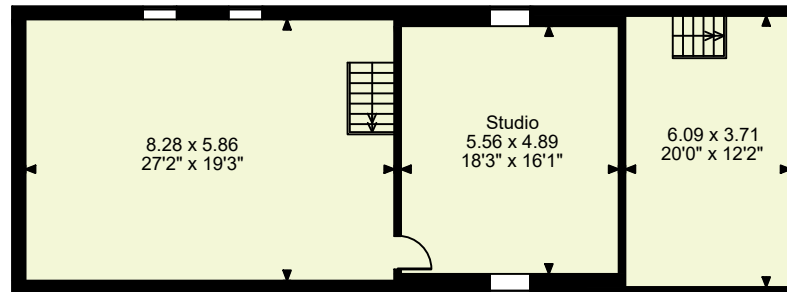
first floor



SECOND FLOOR



barn ground floor



barn first floor

□□□□ Denotes restricted head height

© ehous. Unauthorised reproduction prohibited. Drawing ref. dig/8628706/SS