



DRAYTON COURT

Chelsea, SW10



A MASTERPIECE IN MODERN DESIGN

This well-proportioned two bedroom, two bathroom apartment is situated on the first floor of an impressive mansion block, served by a lift, in Chelsea, SW10



2



2



1

EPC

C

Local Authority: Royal Borough of Kensington and Chelsea

Council Tax band: F

Tenure: Leasehold Approximately 138 years remaining

Ground rent: £250 per annum. Please enquire for next review period

Service charge: £4,500 per annum, reviewed annually. Please enquire for next review period.

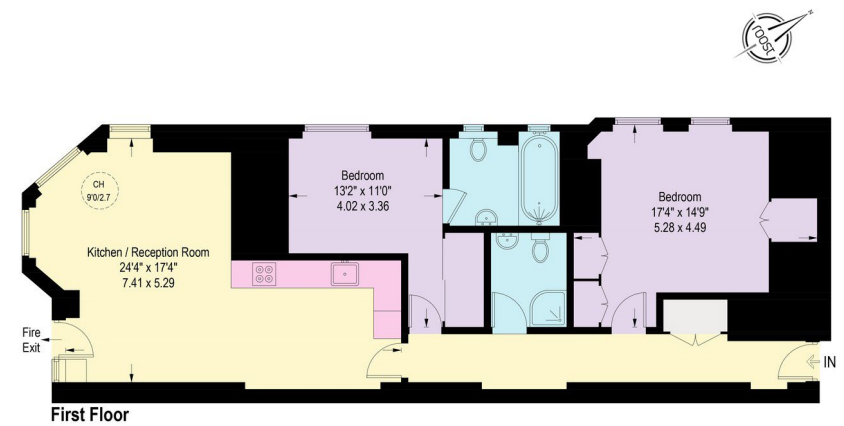
Guide Price: £995,000



Located on popular Drayton Gardens, this apartment is situated on the first floor of an impressive mansion block and is served by a lift. There is an open-plan kitchen, reception, diner with dual-aspect windows. The principal bedroom benefits from ample fitted wardrobe space and is served by a family bathroom. The second double bedroom has an en suite bathroom. There is a useful store cupboard in the hallway.

This apartment is ideally situated for the supermarkets and cafes of the Fulham Road and the boutique shops, bars and restaurants of the iconic Kings Road. The Thames Path provides excellent walking and cycling routes, as does the nearby Brompton Cemetery. Battersea Park is within easy reach, with its boating lake, lakeside cafes and wide range of sports facilities. Gloucester Road and South Kensington Underground Stations are both local as well as there being a regular bus service.

Please note, CGI has been used in some of the photos in this brochure.



Drayton Court, SW10

Approximate Gross Internal Area = 85.8sq m / 923 sq ft

This plan is for layout guidance only. Not drawn to scale unless stated. Windows and door openings are approximate. Whilst every care is taken in the preparation of this plan, please check all dimensions, shapes and compass bearings before making any decisions reliant upon them. (ID767266)

We would be delighted
to tell you more.

Claire Mengham
+44 203 978 2462
claire.mengham@knightfrank.com

Knight Frank Chelsea and South Kensington
352A King's Road
Chelsea, London SW3 5UU

knightfrank.co.uk

Your partners in property

1. Particulars: These particulars are not an offer or contract, nor part of one. You should not rely on statements given by Knight Frank in the particulars, by word of mouth or in writing ("information") as being factually accurate about the property, its condition or its value. Neither Knight Frank nor any joint agent has any authority to make any representations about the property, and accordingly any information given is entirely without responsibility on the part of Knight Frank. 2. Material Information: Please note that the material information is provided to Knight Frank by third parties and is provided here as a guide only. While Knight Frank has taken steps to verify this information, we advise you to confirm the details of any such material information prior to any offer being submitted. If we are informed of changes to this information by the seller or another third party, we will use reasonable endeavours to update this as soon as practical. 3. Photos, Videos etc: The photographs, property videos and virtual viewings etc. show only certain parts of the property as they appeared at the time they were taken. Areas, measurements and distances given are approximate only. 4. Regulations etc: Any reference to alterations to, or use of, any part of the property does not mean that any necessary planning, building regulations or other consent has been obtained. A buyer must find out by inspection or in other ways that these matters have been properly dealt with and that all information is correct. 5. Fixtures and fittings: A list of the fitted carpets, curtains, light fittings and other items fixed to the property which are included in the sale (or may be available by separate negotiation) will be provided by the Seller's Solicitors. 6. VAT: The VAT position relating to the property may change without notice. 7. To find out how we process Personal Data, please refer to our Group Privacy Statement and other notices at <https://www.knightfrank.com/legals/privacy-statement>.

Particulars dated May 2024. Photographs and videos dated May 2024. All information is correct at the time of going to print. Knight Frank is the trading name of Knight Frank LLP. Knight Frank LLP is a limited liability partnership registered in England and Wales with registered number OC305934. Our registered office is at 55 Baker Street, London W1U 8AN. We use the term 'partner' to refer to a member of Knight Frank LLP, or an employee or consultant. A list of members names of Knight Frank LLP may be inspected at our registered office. If you do not want us to contact you further about our services then please contact us by either calling 020 3544 0692, email to marketing.help@knightfrank.com or post to our UK Residential Marketing Manager at our registered office (above) providing your name and address.