

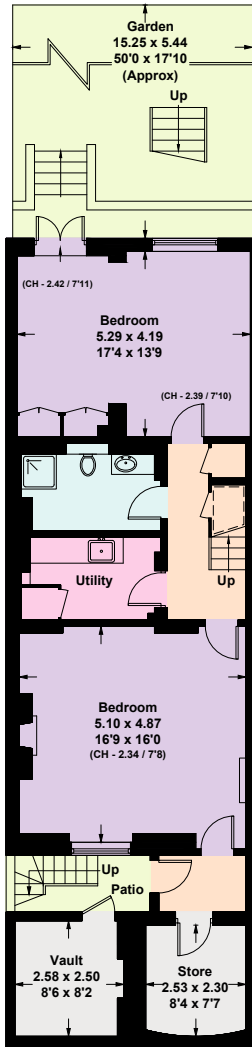
Drayton Gardens, SW10

Approximate Floor Area = 306.35 sq m / 3298 sq ft

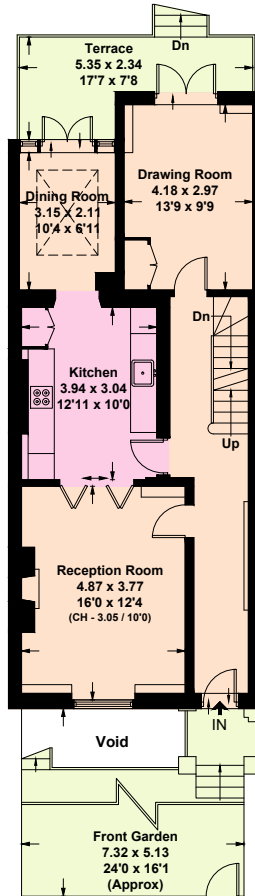
Vault = 6.24 sq m / 67 sq ft

Total = 312.59 sq m / 3365 sq ft

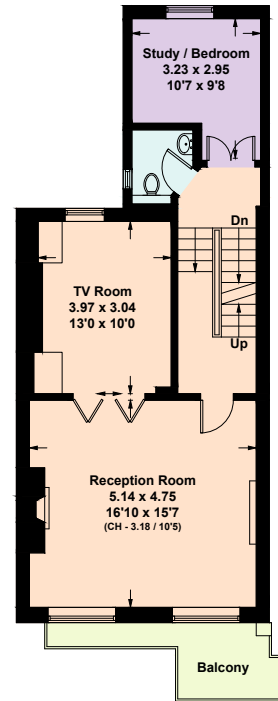
Including Limited Use Area (2.6 sq m / 28 sq ft)



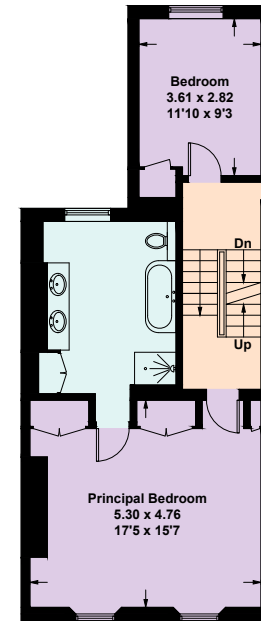
Lower Ground Floor



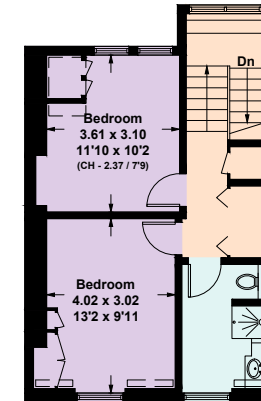
Raised Ground Floor



First Floor



Second Floor



Third Floor

This plan is for layout guidance only. Not drawn to scale unless stated. Windows and door openings are approximate. Whilst every care is taken in the preparation of this plan, please check all dimensions, shapes and compass bearings before making any decisions reliant upon them. (ID1158475)