

Lamont Road, SW10

Approximate Floor Area = 318.6 sq m / 3429 sq ft

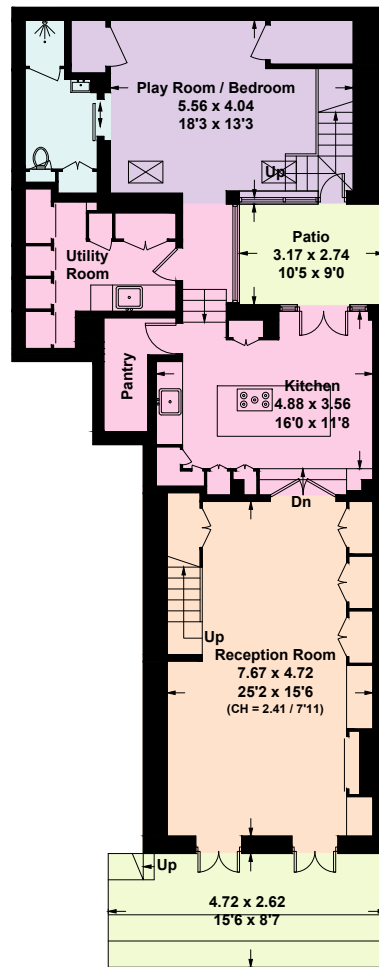
(Including Workshop / Bike Storage)

Lofts = 23.3 sq m / 251 sq ft

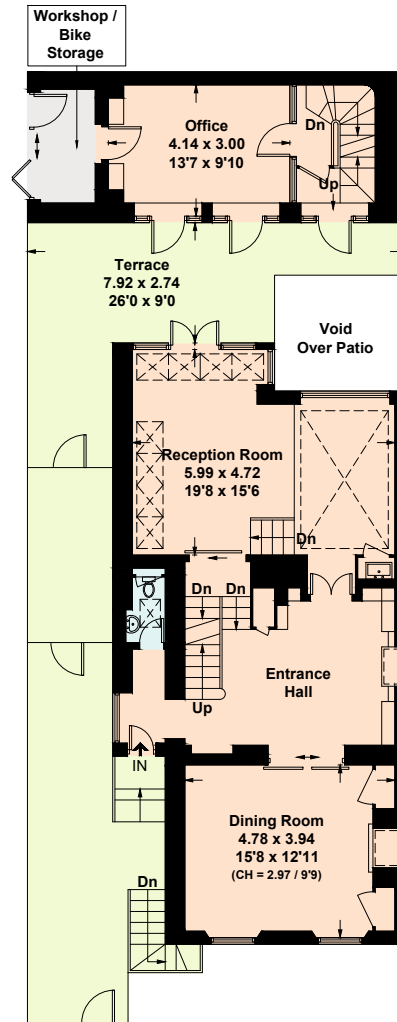
Total = 341.9 sq m / 3680 sq ft

Including Limited Use Area (29.5 sq m / 317 sq ft)

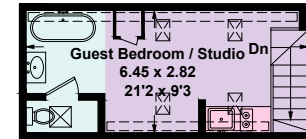
Approximate External Area = 86.3 sq m / 929 sq ft



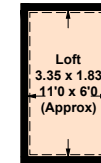
Lower Ground Floor



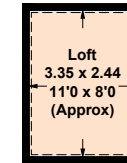
Ground Floor



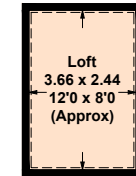
First Floor



Loft

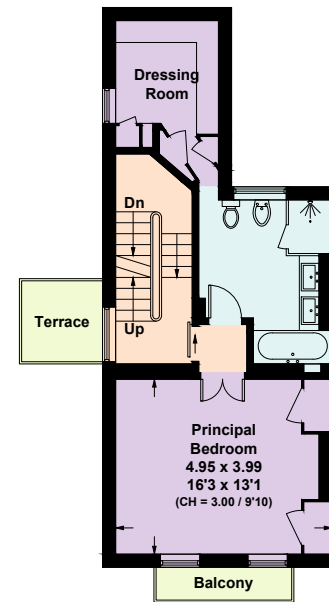


Loft

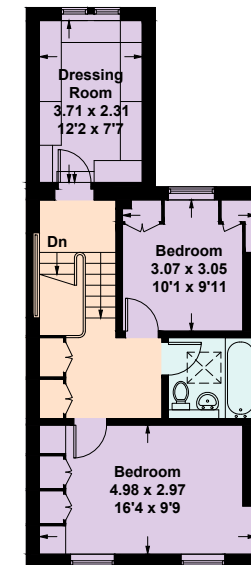


Loft

☐ = Reduced head height below 1.5m



First Floor



Second Floor

This plan is for layout guidance only. Not drawn to scale unless stated. Windows and door openings are approximate. Whilst every care is taken in the preparation of this plan, please check all dimensions, shapes and compass bearings before making any decisions reliant upon them. (ID1135174)