



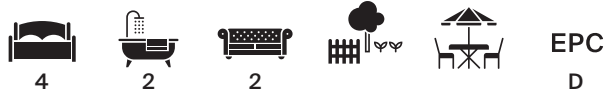
Seymour Walk, Chelsea **SW10**



Seymour Walk, Chelsea SW10

An impressive four-bedroom freehold house with a westerly-facing garden and roof terrace, situated on a prime residential street in Chelsea SW10.

Entering through a private ground floor entrance, an inviting hallway leads to a double reception room featuring striking ceiling height, a Juliet balcony, and elegant wooden flooring. There is also a good-sized bedroom at the rear of this floor that can be used as a study if desired.



Asking price: £3,500,000

Local authority: Royal Borough of Kensington & Chelsea

Council tax band: H

The lower ground floor contains a formal dining room and a beautifully designed, well-appointed kitchen with an island, pendant lighting, integrated appliances, a modern hob, and ample cabinetry and worktop space. Every detail ensures both functionality and aesthetic appeal. This floor also includes a separate utility room with abundant storage, and the dining room has floor-to-ceiling French doors that open to the garden.

The principal bedroom is discreetly positioned on the first floor and offers extensive wardrobe storage and an en suite with a separate bath and walk-in shower. This floor also features a spacious dressing room that could be converted into an additional bedroom if desired.

The second floor houses another good-sized double bedroom with ample eaves storage, a separate shower room accessible via the hallway, and a roof terrace with rooftop views across London.





Seymour Walk is a desirable residential street known for its Victorian terraced houses with ornate facades and prime location. It is conveniently close to King's Road's vibrant shopping, dining, and cultural attractions. The area enjoys excellent transport links, making it a desirable location that blends historical charm with convenience. Gloucester Road and South Kensington are the nearest underground stations.





Seymour Walk SW10

Approximate Gross Internal Floor Area

174.1 sq m / 1,874 sq ft

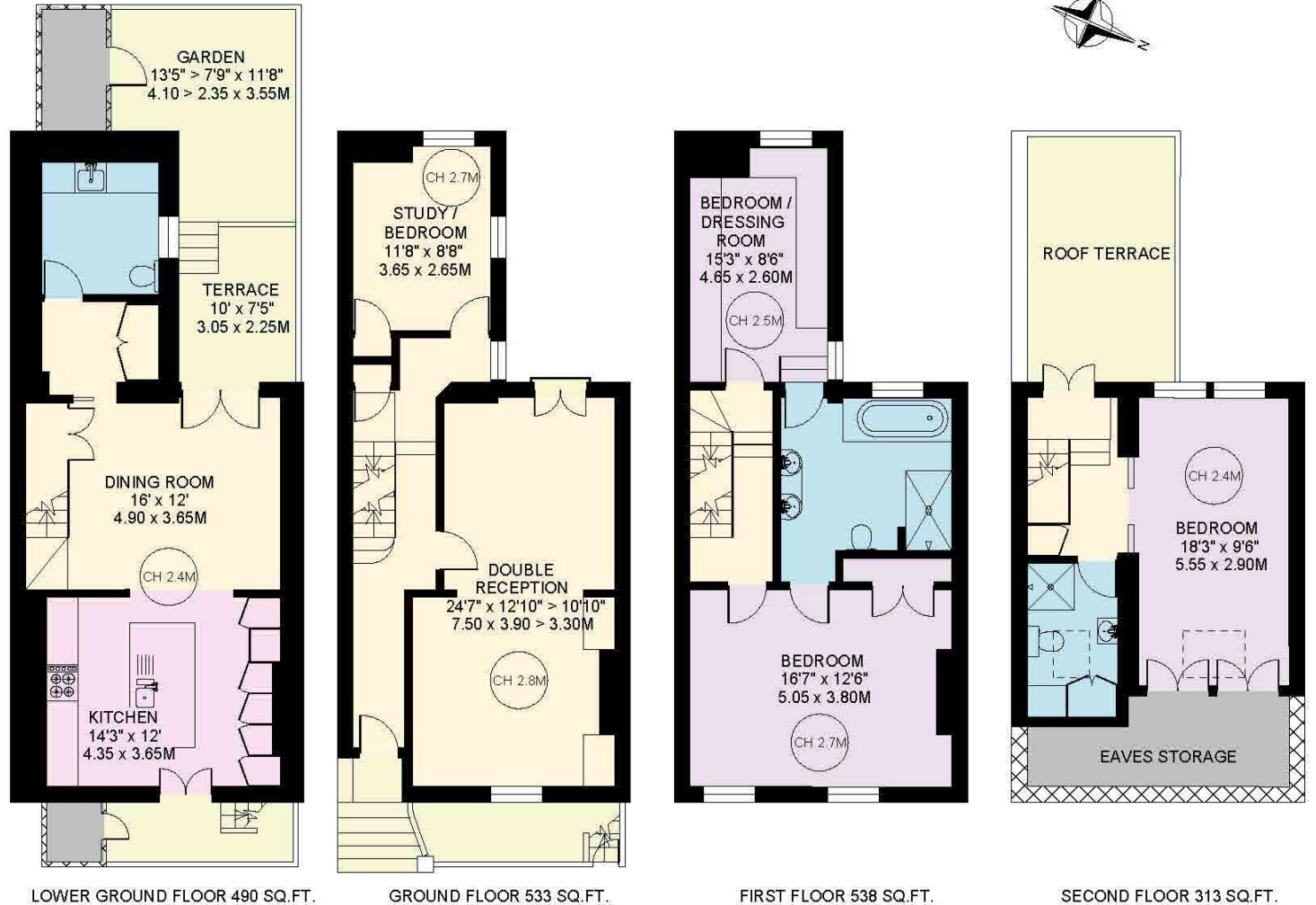
Eaves and Garden Storage

11.9 sq m / 128 sq ft

Total Area Shown On Plan

186 sq m / 2,002 sq ft

This plan is for guidance only and must not be relied upon as a statement of fact. Attention is drawn to the important notice on the last page of the text of the Particulars.



Knight Frank

Chelsea

352A Kings Road

London

SW3 5UU

knightfrank.co.uk

We would be delighted to tell you more

Charles Olver

020 7349 4302

charles.olver@knightfrank.com

Anna Narizzano

020 3826 0639

anna.narizzano@knightfrank.com

Fixtures and fittings: A list of the fitted carpets, curtains, light fittings and other items fixed to the property which are included in the sale (or may be available by separate negotiation) will be provided by the Seller's Solicitors.

Important Notice: 1. Particulars: These particulars are not an offer or contract, nor part of one. You should not rely on statements by Knight Frank LLP in the particulars or by word of mouth or in writing ("information") as being factually accurate about the property, its condition or its value. Neither Knight Frank LLP nor any joint agent has any authority to make any representations about the property, and accordingly any information given is entirely without responsibility on the part of the agents, seller(s) or lessor(s). 2. Photos, Videos etc: The photographs, property videos and virtual viewings etc. show only certain parts of the property as they appeared at the time they were taken. Areas, measurements and distances given are approximate only. 3. Regulations etc: Any reference to alterations to, or use of, any part of the property does not mean that any necessary planning, building regulations or other consent has been obtained. A buyer or lessee must find out by inspection or in other ways that these matters have been properly dealt with and that all information is correct. 4. VAT: The VAT position relating to the property may change without notice. 5. To find out how we process Personal Data, please refer to our Group Privacy Statement and other notices at <https://www.knightfrank.com/legals/privacy-statement>.

Particulars dated July 2024. Photographs and videos dated May 2024.

All information is correct at the time of going to print. Knight Frank is the trading name of Knight Frank LLP. Knight Frank LLP is a limited liability partnership registered in England and Wales with registered number OC305934. Our registered office is at 55 Baker Street, London W1U 8AN. We use the term 'partner' to refer to a member of Knight Frank LLP, or an employee or consultant. A list of members names of Knight Frank LLP may be inspected at our registered office. If you do not want us to contact you further about our services then please contact us by either calling 020 3544 0692, email to marketing.help@knightfrank.com or post to our UK Residential Marketing Manager at our registered office (above) providing your name and address.

