





Hollywood Road, Chelsea **SW10**

Hollywood Road, Chelsea **SW10**

This stunning period townhouse, located in the heart of Chelsea, has been meticulously refurbished across four floors.

The property features a welcoming entrance hall and an elegant reception room on the raised ground floor. It boasts a spacious kitchen and a versatile dining room/additional reception room, with direct access to a beautiful private rear garden.



5 3 3   EPC
D

Guide price: £3,650,000

Tenure: Freehold

Local authority: Royal Borough of Kensington and Chelsea

Council tax band: H



Description

On the lower ground floor, you'll find two double bedrooms, a stylish bathroom, a convenient utility room, and ample understairs storage. The first floor showcases a magnificent front-to-back reception room, bathed in natural light, along with a front balcony and a rear terrace. Additionally, there is a half-landing bathroom for added convenience.

The second floor hosts a generous principal bedroom complete with fitted wardrobes and a private en suite bathroom. There are two further double bedrooms.

This exceptional townhouse seamlessly blends period features with contemporary updates, offering an ideal residence in one of London's most desirable neighbourhoods. Don't miss out on the chance to own this exquisite property.





Location

Hollywood Road is a popular address within the western side of Chelsea. The area offers wonderful vibrancy with many local shops, restaurants and bars within close proximity. The property is located a short distance from the Fulham Road (approx. 0.1 miles) which offers a wonderful selection of local conveniences and a real hub of activity.

Local transport links are excellent with a choice of Earl's Court (approximately 0.7 miles) or Gloucester Road (approximately 0.9 miles). In addition, West Brompton Station is located approximately 0.7 miles and benefits from the Overground.





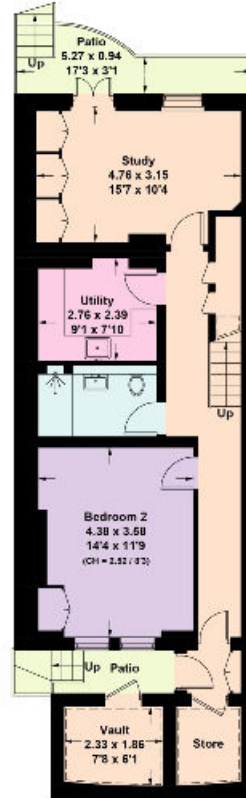
Hollywood Road, SW10

Approximate Floor Area = 221.15 sq m / 2380 sq ft
 Vault / Store = 4.27 sq m / 46 sq ft
 Total = 225.42 sq m / 2426 sq ft
 Including Limited Use Area (7.2 sq m / 77 sq ft)

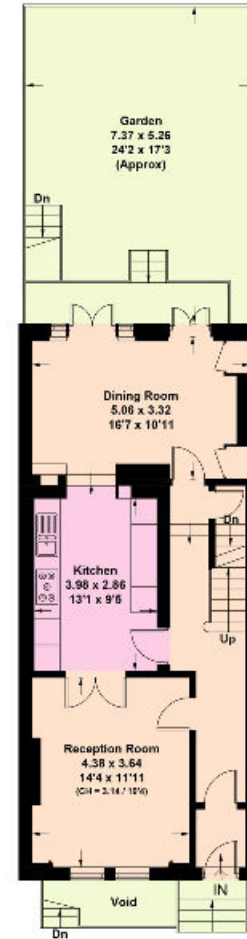
This plan is for guidance only and must not be relied upon as a statement of fact. Attention is drawn to the important notice on the last page of the text of the Particulars.



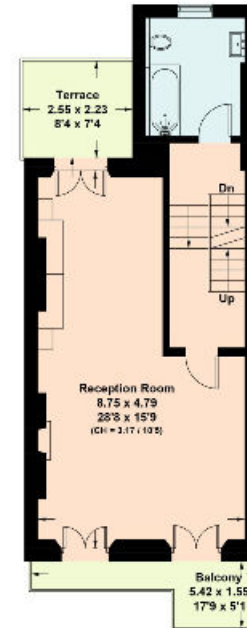
□ = Reduced head height below 1.9m



Lower Ground Floor



Ground Floor



First Floor



Second Floor

Knight Frank
 Chelsea
 352A Kings Road
 London
 SW3 5UU
[knightfrank.co.uk](https://www.knightfrank.co.uk)

We would be delighted to tell you more

Charles Olver	Anna Narizzano
020 7349 4302	020 3826 0639
charles.olver@knightfrank.com	anna.narizzano@knightfrank.com



Fixtures and fittings: A list of the fitted carpets, curtains, light fittings and other items fixed to the property which are included in the sale (or may be available by separate negotiation) will be provided by the Seller's Solicitors.
 Important Notice: 1. Particulars: These particulars are not an offer or contract, nor part of one. You should not rely on statements by Knight Frank LLP in the particulars or by word of mouth or in writing ("information") as being factually accurate about the property, its condition or its value. Neither Knight Frank LLP nor any joint agent has any authority to make any representations about the property, and accordingly any information given is entirely without responsibility on the part of the agents, seller(s) or lessor(s). 2. Photos, Videos etc: The photographs, property videos and virtual viewings etc. show only certain parts of the property as they appeared at the time they were taken. Areas, measurements and distances given are approximate only. 3. Regulations etc: Any reference to alterations to, or use of, any part of the property does not mean that any necessary planning, building regulations or other consent has been obtained. A buyer or lessee must find out by inspection or in other ways that these matters have been properly dealt with and that all information is correct. 4. VAT: The VAT position relating to the property may change without notice. 5. To find out how we process Personal Data, please refer to our Group Privacy Statement and other notices at <https://www.knightfrank.com/legals/privacy-statement>.
 Particulars dated June 2024. Photographs and videos dated June 2024.

All information is correct at the time of going to print. Knight Frank is the trading name of Knight Frank LLP. Knight Frank LLP is a limited liability partnership registered in England and Wales with registered number OC305934. Our registered office is at 55 Baker Street, London W1U 8AN. We use the term 'partner' to refer to a member of Knight Frank LLP or an employee or consultant. A list of members names of Knight Frank LLP may be inspected at our registered office. If you do not want us to contact you further about our services then please contact us by either calling 020 3544 0692, email to marketing.help@knightfrank.com or post to our UK Residential Marketing Manager at our registered office (above) providing your name and address.