



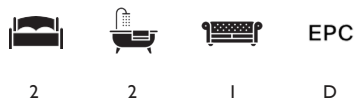
BRECHIN PLACE

South Kensington SW7



BRECHIN PLACE SOUTH KENSINGTON SW7

Elegant split-level apartment with generous proportions, balcony access and superb natural light



Local Authority: Royal Borough of Kensington & Chelsea

Council Tax band: G

Tenure: Leasehold with approximately 88 years remaining

Service charge: £7,452 per annum, reviewed every year, next review date in 2025

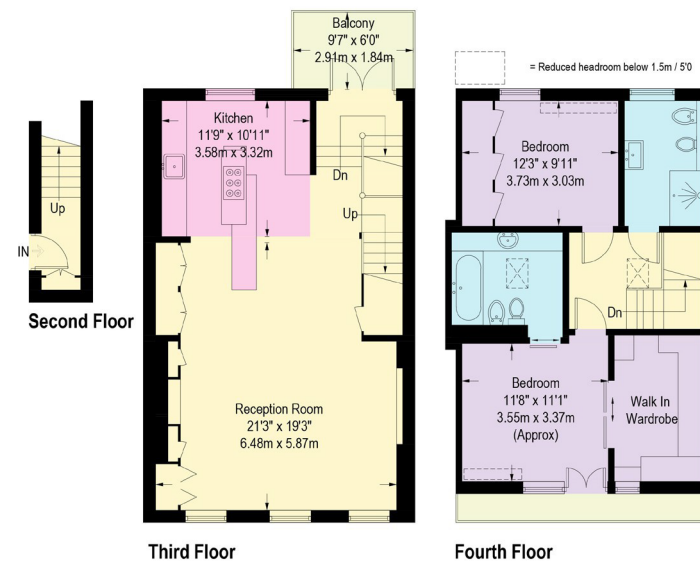
Ground rent: Peppercorn

Guide price: £2,100,000

Arranged across the upper floors of a handsome period building on a quiet South Kensington street, this stylish two bedroom apartment measures approximately 1,268 sq ft and combines impressive proportions with a versatile layout. The third floor is dedicated to a generous reception space with three large windows, which flood the room with natural light. The kitchen is finished with sleek cabinetry and a central island. Access to the roof terrace can be found on this floor. Upstairs are two well-proportioned bedrooms. The principal bedroom benefits from a spacious dressing room and access to a spacious en suite bathroom. The second bedroom is served by a shower room, positioned off the landing.



Brechin Place, SW7



Approximate Gross Internal Area = 116.78 sq m / 1,257 sq ft

This plan is for layout guidance only. Not drawn to scale unless stated. Windows and door openings are approximate. Whilst every care is taken in the preparation of this plan, please check all dimensions, shapes and compass bearings before making any decisions reliant upon them. (ID767266)

We would be delighted
to tell you more.

Claire Mengham
020 3978 2462
claire.mengham@knightfrank.com

Knight Frank Chelsea and South Kensington
352a King's Road
SW3 5UU

knightfrank.co.uk

Your partners in property

1. Particulars: These particulars are not an offer or contract, nor part of one. You should not rely on statements given by Knight Frank in the particulars, by word of mouth or in writing ("information") as being factually accurate about the property, its condition or its value. Neither Knight Frank nor any joint agent has any authority to make any representations about the property, and accordingly any information given is entirely without responsibility on the part of Knight Frank. 2. Material Information: Please note that the material information is provided to Knight Frank by third parties and is provided here as a guide only. While Knight Frank has taken steps to verify this information, we advise you to confirm the details of any such material information prior to any offer being submitted. If we are informed of changes to this information by the seller or another third party, we will use reasonable endeavours to update this as soon as practical. 3. Photos, Videos etc: The photographs, property videos and virtual viewings etc. show only certain parts of the property as they appeared at the time they were taken. Areas, measurements and distances given are approximate only. 4. Regulations etc: Any reference to alterations to, or use of, any part of the property does not mean that any necessary planning, building regulations or other consent has been obtained. A buyer must find out by inspection or in other ways that these matters have been properly dealt with and that all information is correct. 5. Fixtures and fittings: A list of the fitted carpets, curtains, light fittings and other items fixed to the property which are included in the sale (or may be available by separate negotiation) will be provided by the Seller's Solicitors. 6. VAT: The VAT position relating to the property may change without notice. 7. To find out how we process Personal Data, please refer to our Group Privacy Statement and other notices at <https://www.knightfrank.com/legals/privacy-statement>.

Particulars dated August 2025. Photographs and videos dated July 2025. All information is correct at the time of going to print. Knight Frank is the trading name of Knight Frank LLP. Knight Frank LLP is a limited liability partnership registered in England and Wales with registered number OC305934. Our registered office is at 55 Baker Street, London W1U 8AN. We use the term 'partner' to refer to a member of Knight Frank LLP, or an employee or consultant. A list of members names of Knight Frank LLP may be inspected at our registered office. If you do not want us to contact you further about our services then please contact us by either calling 020 3544 0692, email to marketing.help@knightfrank.com or post to our UK Residential Marketing Manager at our registered office (above) providing your name and address.