



REDCLIFFE SQUARE

Chelsea SW10



CHARACTERFUL SPLIT-LEVEL PERIOD APARTMENT

A distinctive split-level apartment offering generous living space, flowing interiors and an appealing mezzanine arrangement.



2



2



2

EPC

A

Local Authority: Royal Borough of Kensington and Chelsea

Council Tax band: H

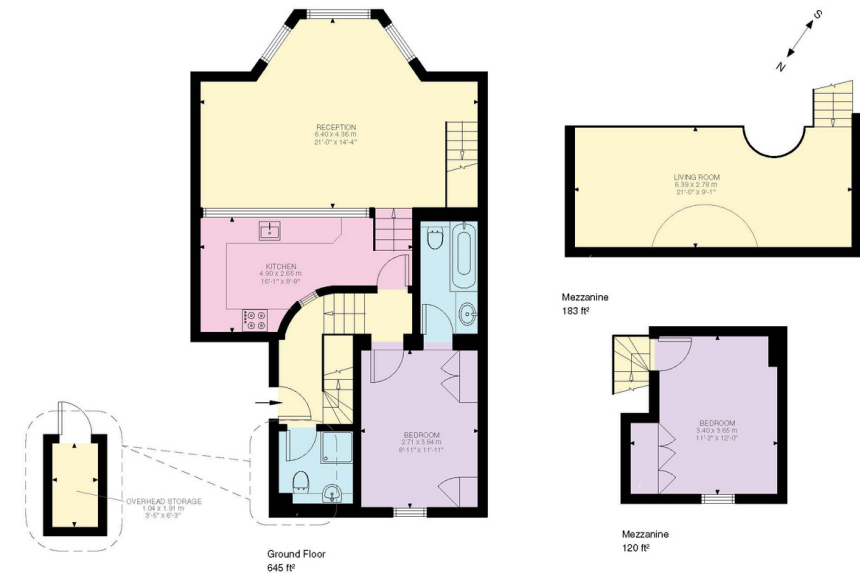
Tenure: Leasehold plus share of freehold with approximately 948 years remaining on the lease.

Ground rent: Peppercorn

Service charge: £4,073.28 per annum, reviewed annually, please enquire for next review date.

Guide Price: £950,000

This charming, raised ground floor apartment offers an engaging layout arranged across the ground floor and mezzanine levels. The apartment comprises an impressive reception room with mezzanine, intricate cornicing and bright bay window. The adjoining kitchen sits conveniently nearby, forming a practical and coherent flow through the main living areas. A bedroom is positioned on the ground floor, arranged off the hallway for privacy and ease of access. Above, the mezzanine level provides a bright living area overlooking the space below. A further bedroom is arranged on the mezzanine, creating a flexible upper level that can be adapted for sleeping, working or additional living requirements.



Redcliffe Square, SW10

Approximate Gross Internal Area = 88.06 sq m / 948sq ft (Excluding overhead storage)

Overhead storage 1.99 sq m / 21 sq ft Inclusive total area 90.05 sq m / 969 sq ft

This plan is for layout guidance only. Not drawn to scale unless stated. Windows and door openings are approximate. Whilst every care is taken in the preparation of this plan, please check all dimensions, shapes and compass bearings before making any decisions reliant upon them. (ID767266)

We would be delighted
to tell you more.

Claire Mengham
0203 978 2462
claire.mengham@knightfrank.com

Knight Frank Chelsea and South Kensington
352A King's Road
London SW3 5UU

knightfrank.co.uk

Your partners in property

1. Particulars: These particulars are not an offer or contract, nor part of one. You should not rely on statements given by Knight Frank in the particulars, by word of mouth or in writing ("information") as being factually accurate about the property, its condition or its value. Neither Knight Frank nor any joint agent has any authority to make any representations about the property, and accordingly any information given is entirely without responsibility on the part of Knight Frank. 2. Material Information: Please note that the material information is provided to Knight Frank by third parties and is provided here as a guide only. While Knight Frank has taken steps to verify this information, we advise you to confirm the details of any such material information prior to any offer being submitted. If we are informed of changes to this information by the seller or another third party, we will use reasonable endeavours to update this as soon as practical. 3. Photos, Videos etc: The photographs, property videos and virtual viewings etc. show only certain parts of the property as they appeared at the time they were taken. Areas, measurements and distances given are approximate only. 4. Regulations etc: Any reference to alterations to, or use of, any part of the property does not mean that any necessary planning, building regulations or other consent has been obtained. A buyer must find out by inspection or in other ways that these matters have been properly dealt with and that all information is correct. 5. Fixtures and fittings: A list of the fitted carpets, curtains, light fittings and other items fixed to the property which are included in the sale (or may be available by separate negotiation) will be provided by the Seller's Solicitors. 6. VAT: The VAT position relating to the property may change without notice. 7. To find out how we process Personal Data, please refer to our Group Privacy Statement and other notices at <https://www.knightfrank.com/legals/privacy-statement>.

Particulars dated December 2025. Photographs and videos dated December 2025.. All information is correct at the time of going to print. Knight Frank is the trading name of Knight Frank LLP. Knight Frank LLP is a limited liability partnership registered in England and Wales with registered number OC305934. Our registered office is at 55 Baker Street, London W1U 8AN. We use the term 'partner' to refer to a member of Knight Frank LLP, or an employee or consultant. A list of members names of Knight Frank LLP may be inspected at our registered office. If you do not want us to contact you further about our services then please contact us by either calling 020 3544 0692, email to marketing.help@knightfrank.com or post to our UK Residential Marketing Manager at our registered office (above) providing your name and address.