



OAKLEY STREET

Chelsea, SW3







# IMMACULATE FOUR BEDROOM CHELSEA HOME

This Chelsea home has been finished to an exceptional standard, where considered design meets a high-quality specification sourced from leading British and international artisans.



4



3



2

EPC

D

Local Authority: Royal Borough of Kensington and Chelsea

Council Tax band: G

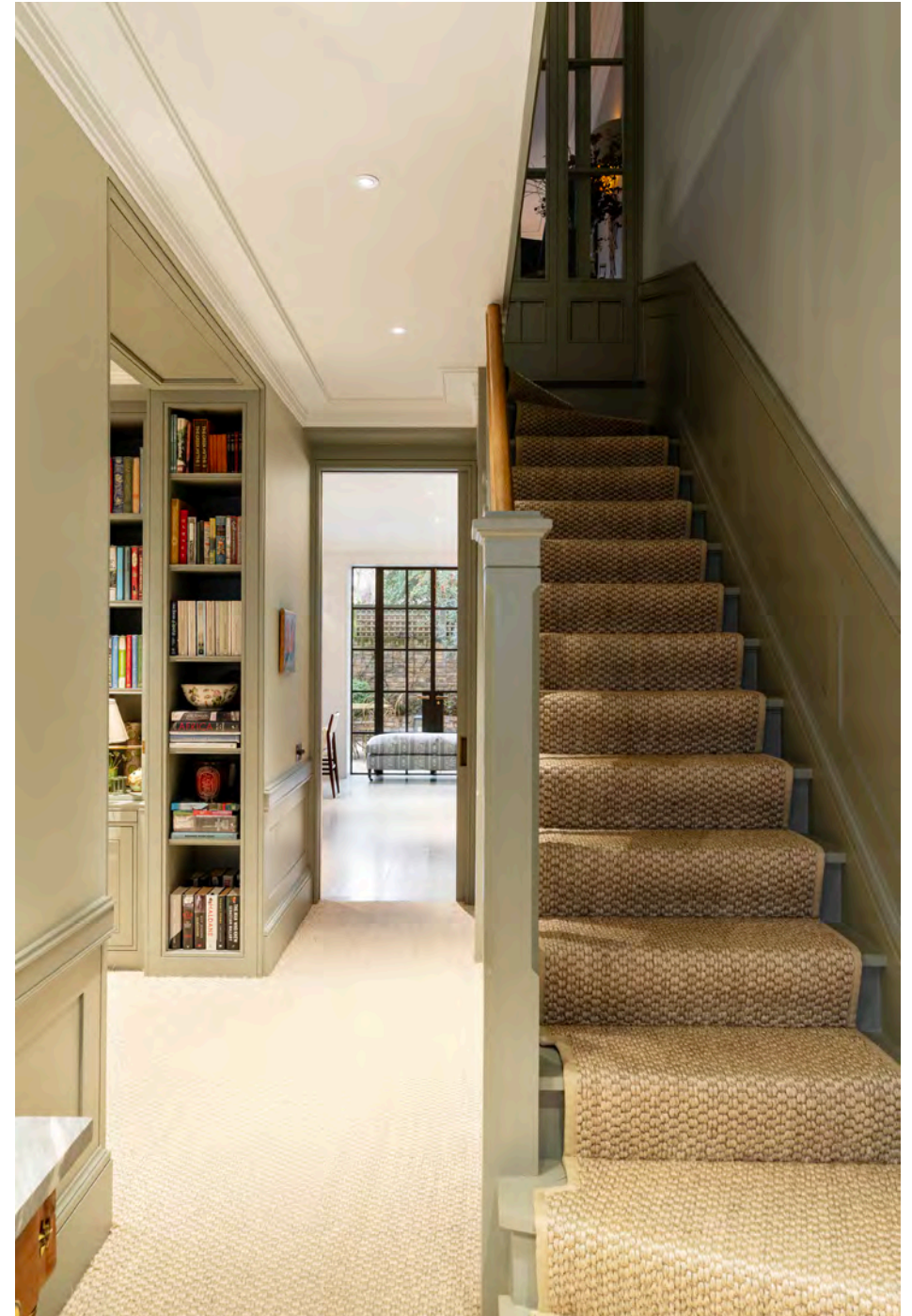
Tenure: Freehold

Guide price: £4,750,000



## THREE BEAUTIFULLY BALANCED FLOORS

Set back from the road behind a charming front garden, the house opens into a wide entrance hallway featuring bespoke cabinetry and a discreet study area, setting the tone for the craftsmanship that continues throughout. To the front is a welcoming family media room, while the rear opens into a superb kitchen and dining room with a beautifully designed layout and striking floor to ceiling Crittall-style doors. These lead directly onto a pretty South West facing terrace garden created with the expertise of a Chelsea Flower Show Judge.















## AN OUTSTANDING FAMILY ACCOMMODATION

Throughout the house, the specification reflects uncompromising attention to detail. Bespoke joinery, tailored interior design, layered architectural lighting and elegantly appointed bathrooms together establish a cohesive and luxurious aesthetic.

The first floor hosts the elegant principal bedroom suite to the front, offering a private retreat with a beautifully appointed en suite bathroom. To the rear is a formal reception room of excellent proportions, highlighted by refined detailing and a feature fireplace — perfect as a sitting room, library or media space. Ceiling heights measure approximately 2.59 metres on the ground and first floors, rising to around 2.74 metres at the upper entertaining level, enhancing the sense of openness and natural light.

The top floor provides excellent family flexibility, comprising a generous guest bedroom suite, two further bedrooms and a stylish family bathroom, as well as a practical utility room. Comfort systems include air conditioning in the principal bedrooms and TV room, and underfloor heating to the ground floor and bathrooms, delivering discreet luxury throughout the seasons.









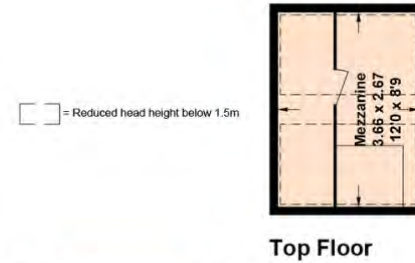
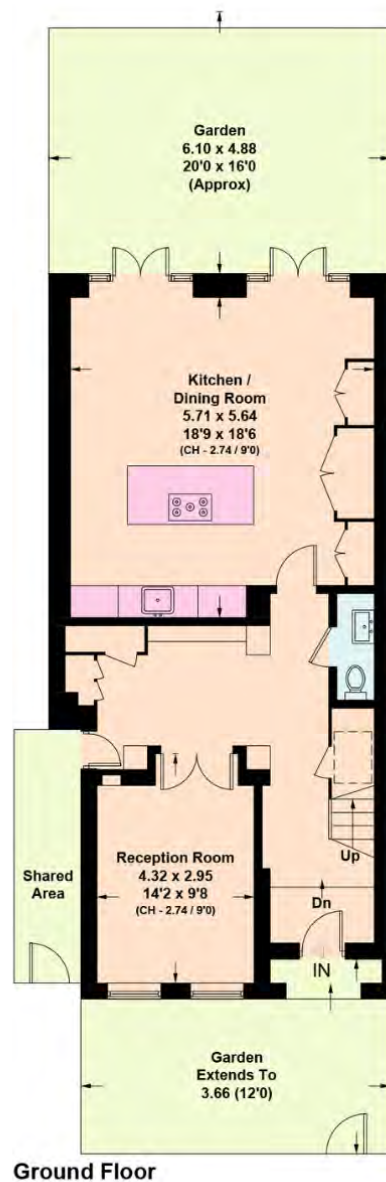


# LOCATION

Oakley Street is positioned within one of Chelsea's most desirable residential pockets, celebrated for its elegant period architecture and proximity to the area's boutiques, galleries and neighbourhood amenities. Its location offers an ideal blend of village charm and central London convenience, making it one of the area's most sought after addresses.







Approximate Gross Internal Area = 213.1 sq m / 2,293 sq ft

This plan is for layout guidance only. Not drawn to scale unless stated. Windows and door openings are approximate. Whilst every care is taken in the preparation of this plan, please check all dimensions, shapes and compass bearings before making any decisions reliant upon them. (ID767266)



We would be delighted  
to tell you more.

Rebecca Jane Higgins

020 7871 4115

rebecca.higgins@knightfrank.com

**Knight Frank Chelsea and South Kensington**

352a Kings Road

SW3 5UU

**knightfrank.co.uk**

**Your partners in property**

1. Particulars: These particulars are not an offer or contract, nor part of one. You should not rely on statements given by Knight Frank in the particulars, by word of mouth or in writing ("information") as being factually accurate about the property, its condition or its value. Neither Knight Frank nor any joint agent has any authority to make any representations about the property, and accordingly any information given is entirely without responsibility on the part of Knight Frank. 2. Material Information: Please note that the material information is provided to Knight Frank by third parties and is provided here as a guide only. While Knight Frank has taken steps to verify this information, we advise you to confirm the details of any such material information prior to any offer being submitted. If we are informed of changes to this information by the seller or another third party, we will use reasonable endeavours to update this as soon as practical. 3. Photos, Videos etc: The photographs, property videos and virtual viewings etc. show only certain parts of the property as they appeared at the time they were taken. Areas, measurements and distances given are approximate only. 4. Regulations etc: Any reference to alterations to, or use of, any part of the property does not mean that any necessary planning, building regulations or other consent has been obtained. A buyer must find out by inspection or in other ways that these matters have been properly dealt with and that all information is correct. 5. Fixtures and fittings: A list of the fitted carpets, curtains, light fittings and other items fixed to the property which are included in the sale (or may be available by separate negotiation) will be provided by the Seller's Solicitors. 6. VAT: The VAT position relating to the property may change without notice. 7. To find out how we process Personal Data, please refer to our Group Privacy Statement and other notices at <https://www.knightfrank.com/legals/privacy-statement>.

Particulars dated January 2026. Photographs and videos dated January 2026. All information is correct at the time of going to print. Knight Frank is the trading name of Knight Frank LLP. Knight Frank LLP is a limited liability partnership registered in England and Wales with registered number OC305934. Our registered office is at 55 Baker Street, London W1U 8AN. We use the term 'partner' to refer to a member of Knight Frank LLP, or an employee or consultant. A list of members names of Knight Frank LLP may be inspected at our registered office. If you do not want us to contact you further about our services then please contact us by either calling 020 3544 0692, email to [marketing.help@knightfrank.com](mailto:marketing.help@knightfrank.com) or post to our UK Residential Marketing Manager at our registered office (above) providing your name and address.