



# QUEEN'S GATE PLACE

South Kensington, SW7





# FOUR BEDROOM DUPLEX APARTMENT WITH TERRACE

This well-proportioned duplex home occupies the raised ground and lower ground floors of an impressive period building on Queens Gate Place.



Local Authority: Royal Borough of Kensington and Chelsea

Council Tax band: G

Tenure: Leasehold with approximately 977 years remaining.

Ground rent: We have not yet recieved details regarding the ground rent. Please make your own enquiries.

Service charge: We have not yet recieved details regarding the service charge. Please make your own enquiries.

Price to be confirmed







## OCCUPYING TWO FLOORS IN AN IMPRESSIVE PERIOD BUILDING

The layout is designed to deliver both scale and practicality, with an excellent balance of entertaining space and family accommodation, with all bedrooms having their own en suite facilities.

The lower ground floor is arranged as a private accommodation level, with four immaculate bedroom suites and an additional living area. The principal bedroom includes an en suite bathroom and a dedicated dressing area, offering a defined suite with practical storage and privacy. Three further bedrooms are arranged along the hallway, each with access to their own bathroom facilities. A central TV room offers a relaxed second living space and opens directly to the property's private patio, creating a straightforward connection between indoor and outdoor areas. This outside space is well-sized for seating and offers a valuable open-air extension of the home.











## FOUR EN SUITE BEDROOMS

The raised ground floor forms the principal entertaining zone. At the front, a wide reception room benefits from a ceiling height of approximately 3.8m, giving the space a sense of openness that complements its large bay windows. The room connects directly to a formal dining area, allowing the two spaces to operate independently or as a single continuous setting for hosting. Positioned to the rear, the kitchen offers another generous room with the same ceiling height, providing ample workspace and the capacity for everyday use as well as larger gatherings. The layout on this floor provides strong lateral space, good natural light and an intuitive flow from room to room.

Air conditioning and wooden floors, complemented by underfloor heating run throughout the property.



















## LOCATION

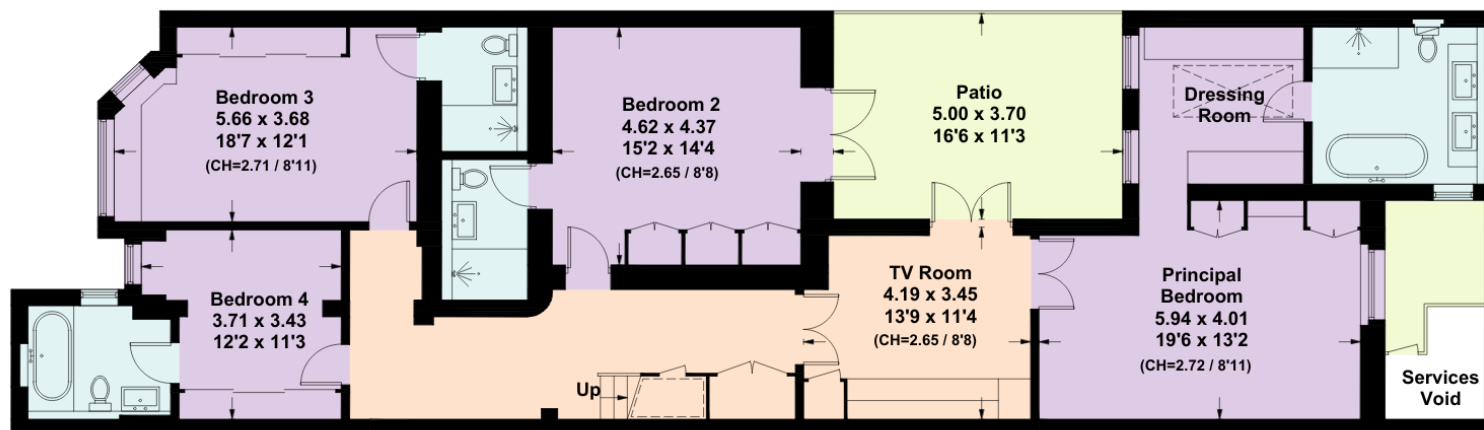
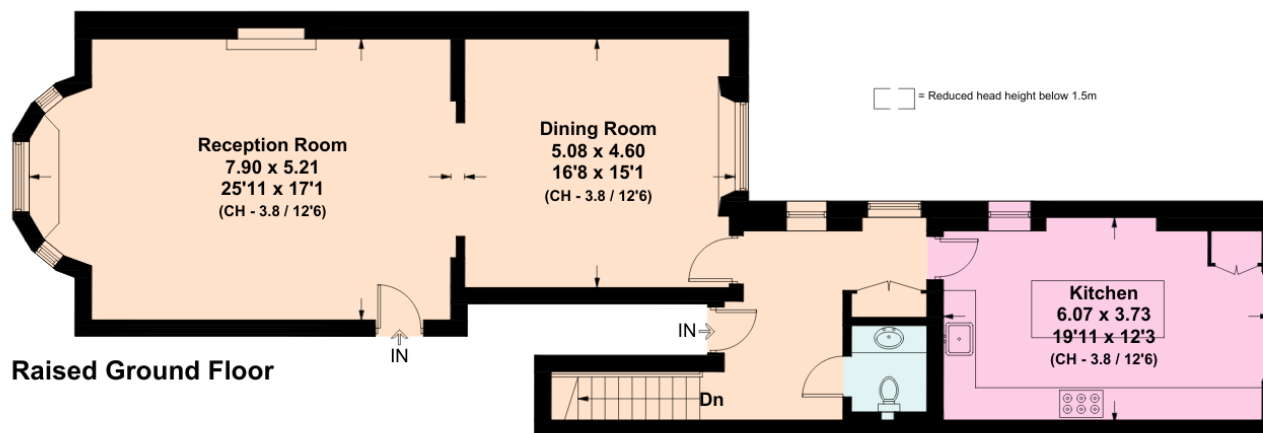
Queens Gate Place is a highly regarded residential street in South Kensington, known for its elegant period architecture and immediate access to the area's cultural and lifestyle offerings. Kensington Gardens and Hyde Park are within easy reach, providing extensive green space.

A variety of cafés, restaurants and shops are available nearby, along with major cultural institutions including the museums of South Kensington.

Transport links are excellent: Gloucester Road and South Kensington Underground stations provide District, Circle and Piccadilly line services for straightforward travel across London.







Queen's Gate Place, SW7

Approximate Gross Internal Area = 254.8 sq m / 2,743 sq ft

Including limited use area = 2.9 sq m / 31 sq ft

This plan is for layout guidance only. Not drawn to scale unless stated. Windows and door openings are approximate. Whilst every care is taken in the preparation of this plan, please check all dimensions, shapes and compass bearings before making any decisions reliant upon them. (ID767266)



Rebecca Jane Higgins

020 7871 4115

rebecca.higgins@knightfrank.com

**Knight Frank Chelsea and South Kensington**

352a Kings Road

SW3 5UU

**knightfrank.co.uk**

Your partners in property

---

1. Particulars: These particulars are not an offer or contract, nor part of one. You should not rely on statements given by Knight Frank in the particulars, by word of mouth or in writing ("information") as being factually accurate about the property, its condition or its value. Neither Knight Frank nor any joint agent has any authority to make any representations about the property, and accordingly any information given is entirely without responsibility on the part of Knight Frank. 2. Material Information: Please note that the material information is provided to Knight Frank by third parties and is provided here as a guide only. While Knight Frank has taken steps to verify this information, we advise you to confirm the details of any such material information prior to any offer being submitted. If we are informed of changes to this information by the seller or another third party, we will use reasonable endeavours to update this as soon as practical. 3. Photos, Videos etc: The photographs, property videos and virtual viewings etc. show only certain parts of the property as they appeared at the time they were taken. Areas, measurements and distances given are approximate only. 4. Regulations etc: Any reference to alterations to, or use of, any part of the property does not mean that any necessary planning, building regulations or other consent has been obtained. A buyer must find out by inspection or in other ways that these matters have been properly dealt with and that all information is correct. 5. Fixtures and fittings: A list of the fitted carpets, curtains, light fittings and other items fixed to the property which are included in the sale (or may be available by separate negotiation) will be provided by the Seller's Solicitors. 6. VAT: The VAT position relating to the property may change without notice. 7. To find out how we process Personal Data, please refer to our Group Privacy Statement and other notices at <https://www.knightfrank.com/legals/privacy-statement>.

Particulars dated January 2026. Photographs and videos dated January 2026. All information is correct at the time of going to print. Knight Frank is the trading name of Knight Frank LLP. Knight Frank LLP is a limited liability partnership registered in England and Wales with registered number OC305934. Our registered office is at 55 Baker Street, London W1U 8AN. We use the term 'partner' to refer to a member of Knight Frank LLP, or an employee or consultant. A list of members names of Knight Frank LLP may be inspected at our registered office. If you do not want us to contact you further about our services then please contact us by either calling 020 3544 0692, email to [marketing.help@knightfrank.com](mailto:marketing.help@knightfrank.com) or post to our UK Residential Marketing Manager at our registered office (above) providing your name and address.