



ASHBURNHAM ROAD

Chelsea SW10



A BEAUTIFULLY PRESENTED FOUR BEDROOM CHELSEA TOWNHOUSE

This attractive Chelsea townhouse offers approximately 2,166 sq ft of bright and versatile accommodation arranged over four floors, with a patio garden and elegant period detailing throughout.



4



4



3

EPC

D

Local Authority: Royal Borough of Kensington and Chelsea

Council Tax band: G

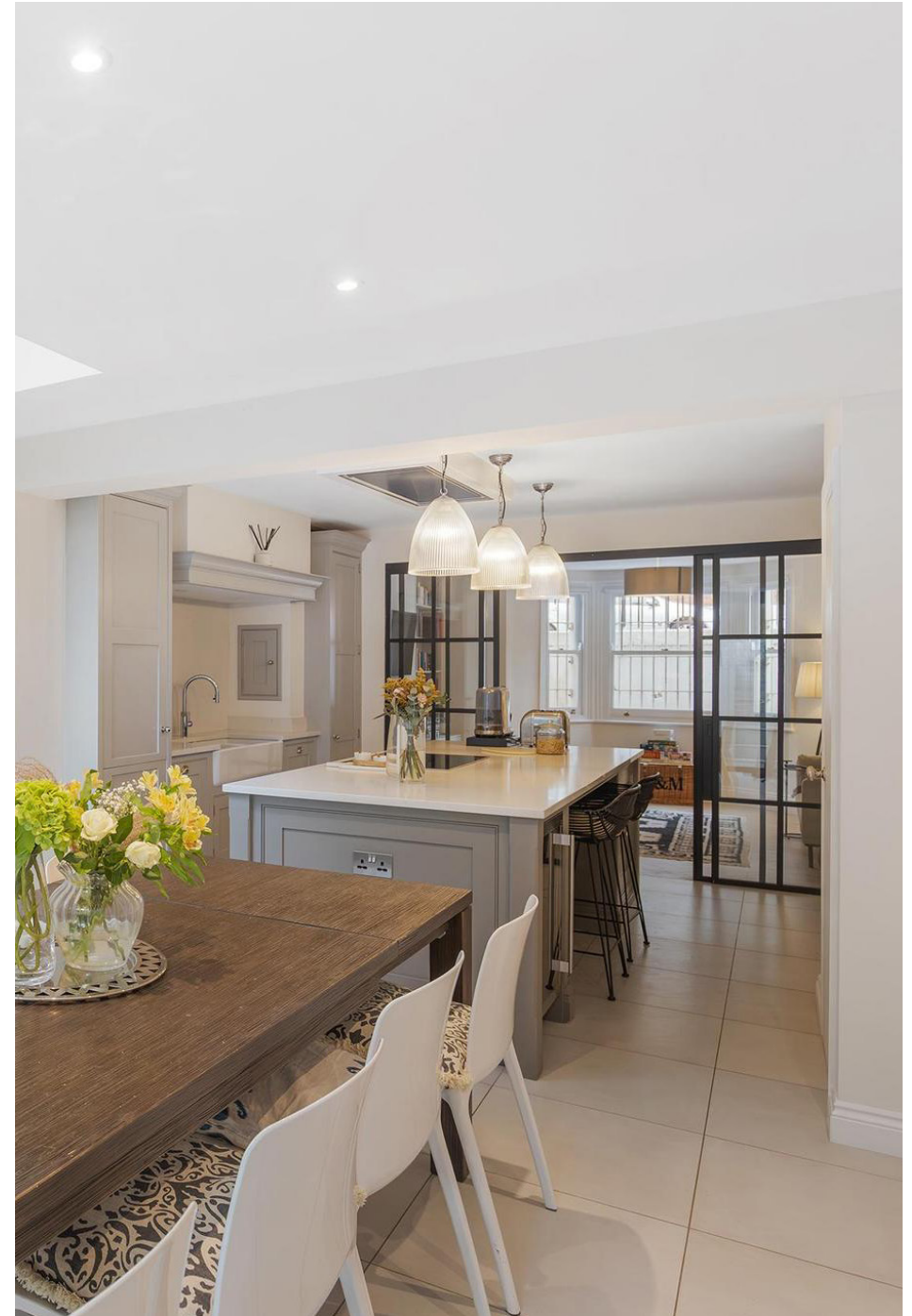
Tenure: Freehold

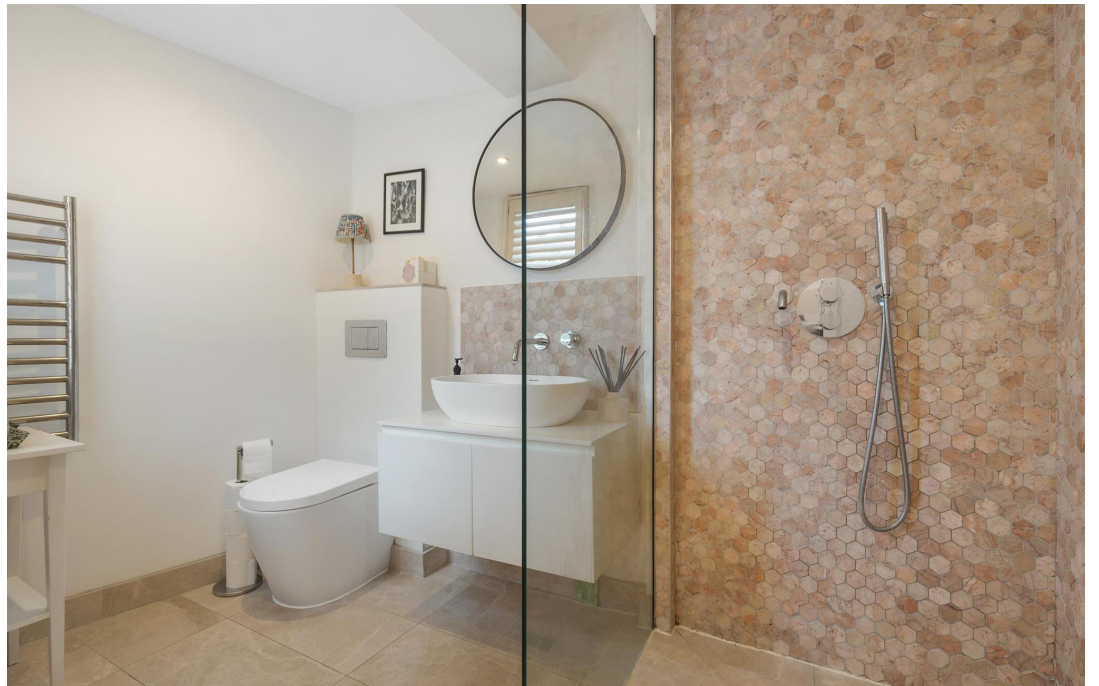
Guide price: £2,150,000



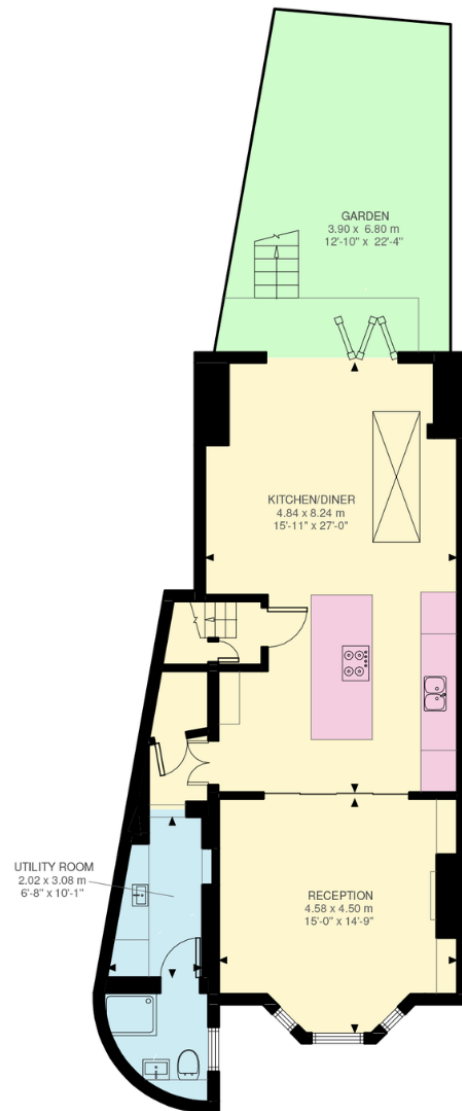
BRIGHT, WELL-BALANCED INTERIORS

The lower ground floor is centred around a superb 28 ft kitchen and dining room, perfectly designed for everyday living and entertaining. The contemporary kitchen provides excellent storage and workspace, complemented by a generous dining area with direct access to the rear garden. A separate reception room at the front of the house features a bay window, while a utility room and guest cloakroom complete this level. The ground floor comprises a reception room with bay windows, a bedroom and a bathroom. Both rooms benefit from high ceilings and pleasant outlooks, including access to the small front garden. The first floor offers two further bedrooms and two bathrooms, providing excellent flexibility for family life or guests. The top floor is home to a spacious fourth bedroom with eaves storage. The house combines period charm with contemporary comfort, offering a layout ideally suited to family living in one of Chelsea's most convenient residential locations.

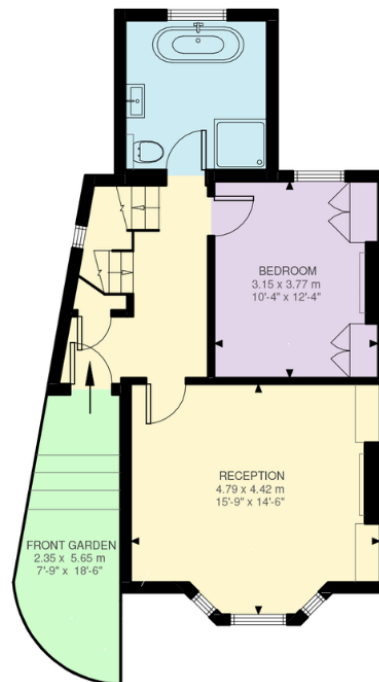




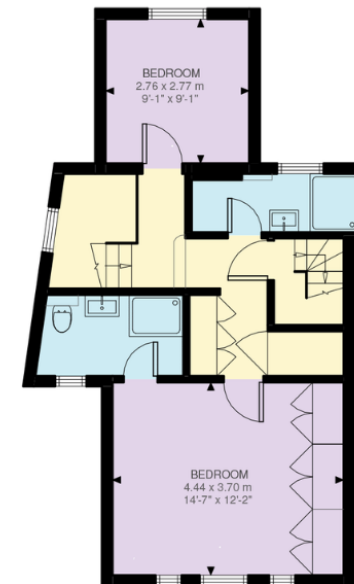




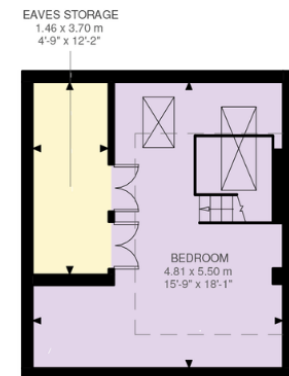
Lower Ground Floor
804 ft²



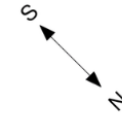
Ground Floor
568ft²



First Floor
547 ft²



Second Floor
247 ft²



Ashburnham Road, SW10
Approximate Gross Internal Area = 201.3 sq m / 2,166 sq ft

This plan is for layout guidance only. Not drawn to scale unless stated. Windows and door openings are approximate. Whilst every care is taken in the preparation of this plan, please check all dimensions, shapes and compass bearings before making any decisions reliant upon them. (ID767266)

We would be delighted
to tell you more.

Claire Mengham

020 3978 2462

claire.mengham@knightfrank.com

Knight Frank Chelsea and South Kensington

352a Kings Road

SW3 5UU

[knightfrank.co.uk](https://www.knightfrank.co.uk)

Your partners in property

1. Particulars: These particulars are not an offer or contract, nor part of one. You should not rely on statements given by Knight Frank in the particulars, by word of mouth or in writing ("information") as being factually accurate about the property, its condition or its value. Neither Knight Frank nor any joint agent has any authority to make any representations about the property, and accordingly any information given is entirely without responsibility on the part of Knight Frank. 2. Material Information: Please note that the material information is provided to Knight Frank by third parties and is provided here as a guide only. While Knight Frank has taken steps to verify this information, we advise you to confirm the details of any such material information prior to any offer being submitted. If we are informed of changes to this information by the seller or another third party, we will use reasonable endeavours to update this as soon as practical. 3. Photos, Videos etc: The photographs, property videos and virtual viewings etc. show only certain parts of the property as they appeared at the time they were taken. Areas, measurements and distances given are approximate only. 4. Regulations etc: Any reference to alterations to, or use of, any part of the property does not mean that any necessary planning, building regulations or other consent has been obtained. A buyer must find out by inspection or in other ways that these matters have been properly dealt with and that all information is correct. 5. Fixtures and fittings: A list of the fitted carpets, curtains, light fittings and other items fixed to the property which are included in the sale (or may be available by separate negotiation) will be provided by the Seller's Solicitors. 6. VAT: The VAT position relating to the property may change without notice. 7. To find out how we process Personal Data, please refer to our Group Privacy Statement and other notices at <https://www.knightfrank.com/legals/privacy-statement>.

Particulars dated October 2025. Photographs and videos dated October 2025. All information is correct at the time of going to print. Knight Frank is the trading name of Knight Frank LLP. Knight Frank LLP is a limited liability partnership registered in England and Wales with registered number OC305934. Our registered office is at 55 Baker Street, London W1U 8AN. We use the term 'partner' to refer to a member of Knight Frank LLP, or an employee or consultant. A list of members names of Knight Frank LLP may be inspected at our registered office. If you do not want us to contact you further about our services then please contact us by either calling 020 3544 0692, email to marketing.help@knightfrank.com or post to our UK Residential Marketing Manager at our registered office (above) providing your name and address.