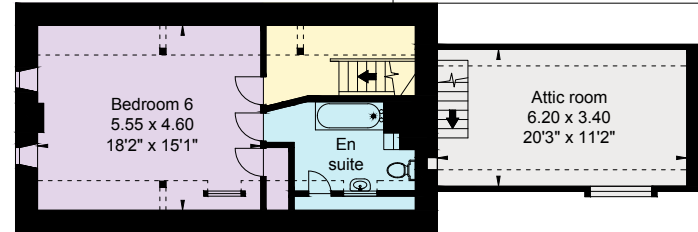
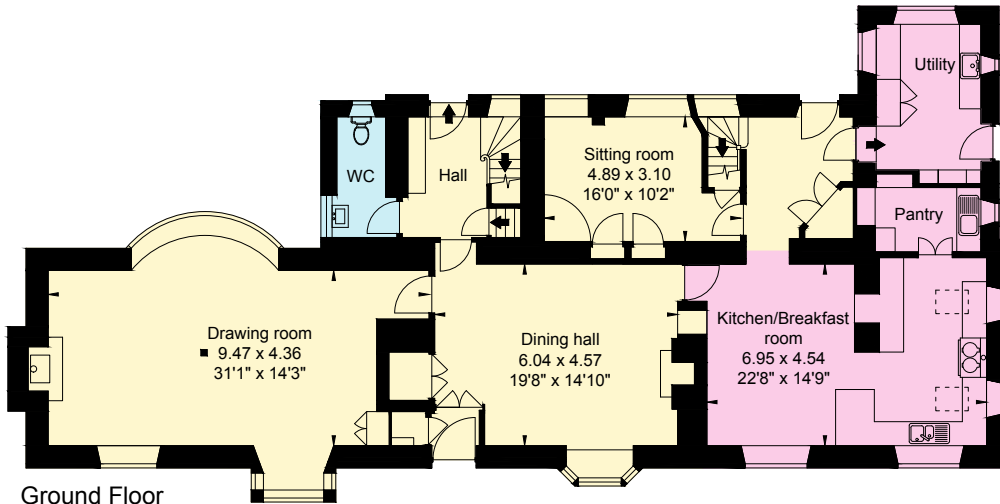


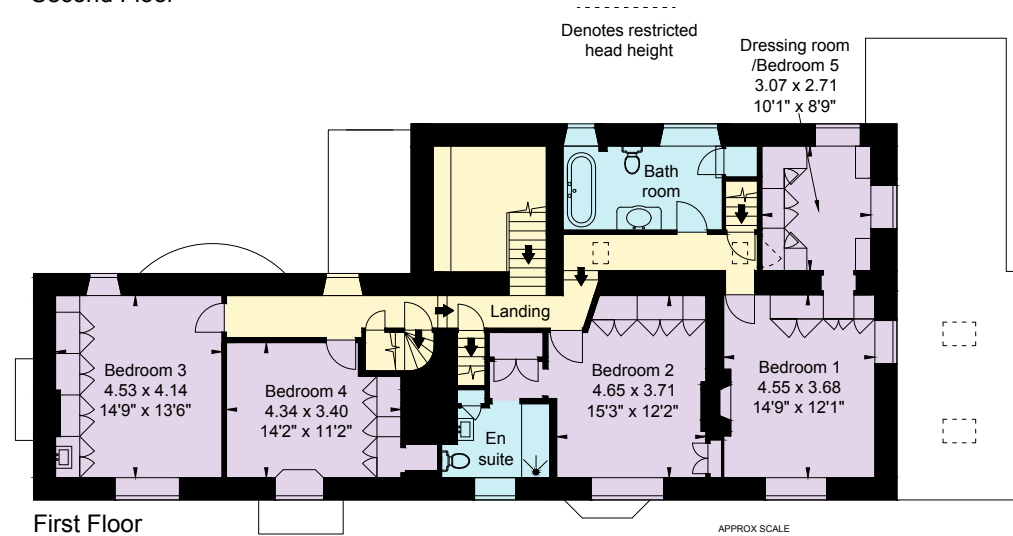
Cellar



Second Floor



Ground Floor



First Floor



APPROXIMATE GROSS INTERNAL FLOOR AREA:
 House: 396 sq m (4,263 sq ft)
 Squirrel Cottage: 134 sq m (1,442 sq ft) inc. Stores
 Guest Barn: 98 sq m (1,057 sq ft)
 Garden room/Gym/Pool Shed: 82 sq m (883 sq ft)
 Office: 25 sq m (270 sq ft)
 Summerhouse/Office: 12 sq m (129 sq ft)
 Total: 747 sq m (8,044 sq ft)
 © Cotswold Plans Ltd ma/15888

This plan is for guidance only and must not be relied upon as a statement of fact. Attention is drawn to the Important Notice on the last page of text of the Particulars.

Old Pound House Kingham