

# Warnham Lodge Farm

Approximate Gross Internal Floor Area  
684.8 sq m / 7371 sq ft (Excluding Void)

This plan is for guidance only and must not be relied upon as a statement of fact. Attention is drawn to the Important Notice on the last page of the text of the Particulars.

- Reception
- Bedroom
- Bathroom
- Kitchen/Utility
- Storage
- Outside



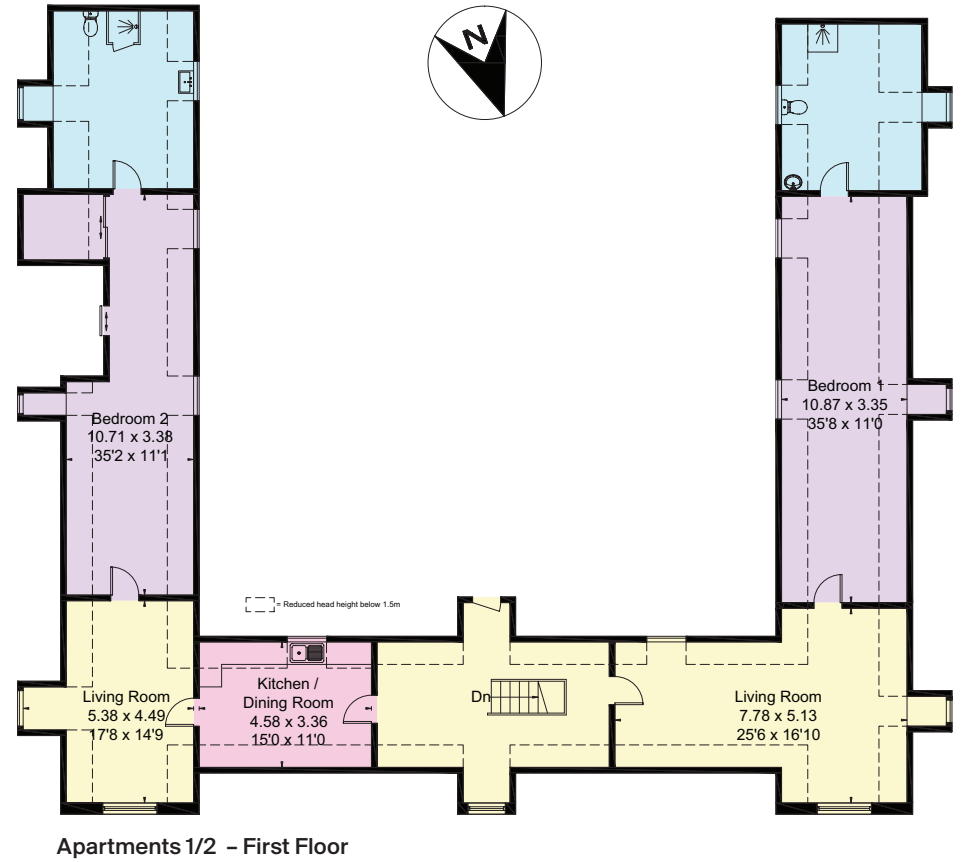
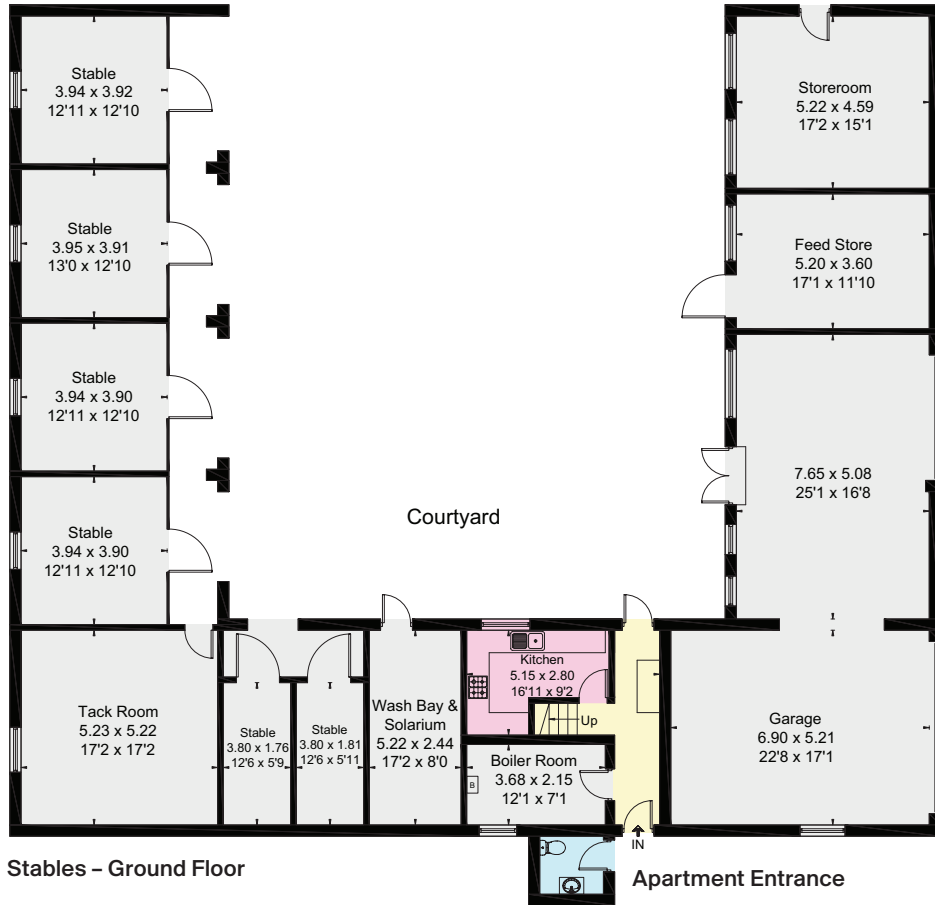
**Approximate Gross Internal Floor Area**

**Stables Outbuildings: 243.2 sq m / 2618 sq ft**

**Apartments: 226.6 sq m / 2439 sq ft**

**Total: 469.8 sq m / 5057 sq ft**

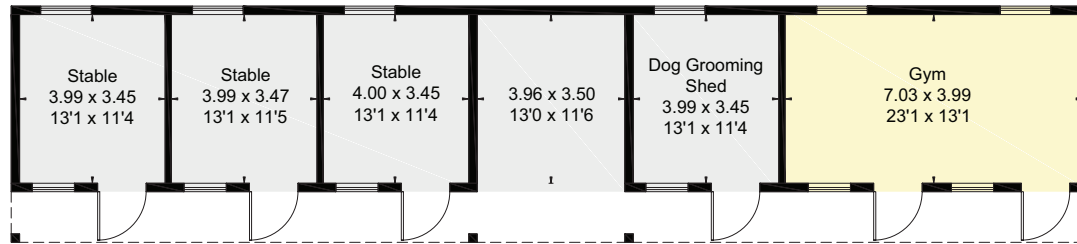
This plan is for guidance only and must not be relied upon as a statement of fact. Attention is drawn to the Important Notice on the last page of the text of the Particulars.



**Approximate Gross Internal Floor Area**

**Stable Block: 85.2 sq m / 917 sq ft**

This plan is for guidance only and must not be relied upon as a statement of fact. Attention is drawn to the Important Notice on the last page of the text of the Particulars.



(Not Shown In Actual Location / Orientation)

