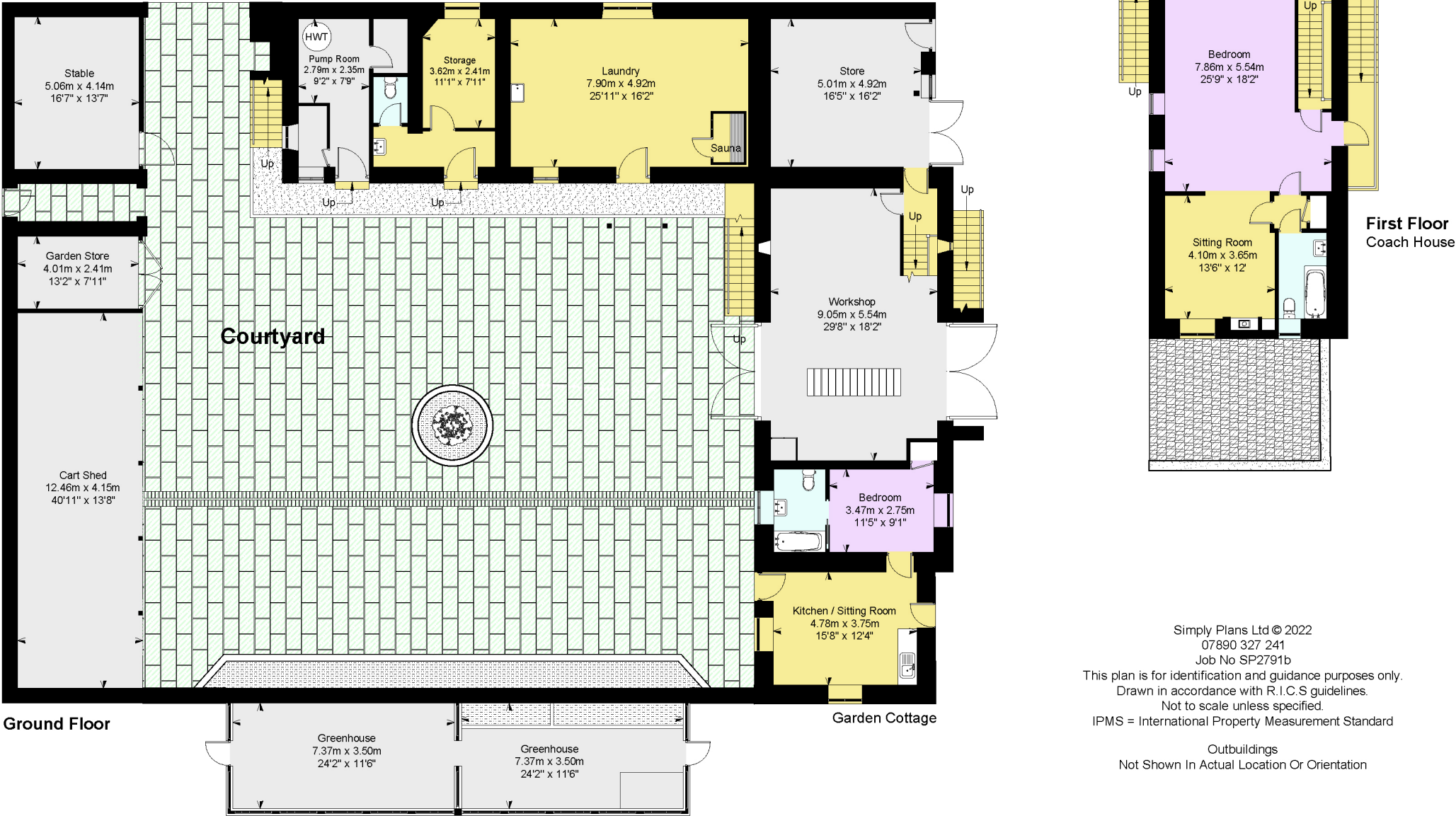


Priors Mesne, Aylburton, Gloucestershire GL15 6DX Courtyard Buildings

Approximate IPMS2 Floor Area	
Garden Cottage	37 sq metres / 398 sq feet
Keepers Yard	71 sq metres / 764 sq feet
Coach House	66 sq metres / 711 sq feet
Main Barn / Store	81 sq metres / 872 sq feet
Cart Shed / Garden Store	62 sq metres / 668 sq feet
Stable	21 sq metres / 226 sq feet
Pump Room	14 sq metres / 151 sq feet
Storage	16 sq metres / 172 sq feet
Laundry	39 sq metres / 419 sq feet
Greenhouse	52 sq metres / 560 sq feet
Total	459 sq metres / 4941 sq feet



Simply Plans Ltd © 2022
07890 327 241
Job No SP2791b
This plan is for identification and guidance purposes only.
Drawn in accordance with R.I.C.S guidelines.
Not to scale unless specified.
IPMS = International Property Measurement Standard
Outbuildings
Not Shown In Actual Location Or Orientation