

# Parklands, St Georges Hill, Weybridge, Surrey

---





A high specification **luxurious mansion** finished to exacting standards and designed for entertaining on a grand scale.

---

## Summary of accommodation

**Ground Floor:** Grand reception hall | Drawing room | Dining room | Well equipped kitchen | Family room | Study | Music room | Lounge | Service kitchen  
Passenger lift

**First Floor:** Impressive principal bedroom suite with two en suite bathrooms and two dressing rooms | Further five bedroom suites

**Lower Ground Floor:** Indoor swimming pool leading to outside terrace with living wall and natural light | Sauna | Steam room | Gym | Changing rooms  
Treatment room | Wine cellar | Games room | Cinema | Outside terrace with bar

Garage with space for four cars | Staff quarters (above garage) with living room and kitchen, bedroom, shower and WC

**Gardens and grounds:** A spacious driveway and a beautifully landscaped front garden | Rear garden with a spacious lawn and a natural looking area  
perfect for BBQ | Zen garden to enhance view from the swimming pool

In all about 1 acre

## Distances

Weybridge 1 mile, Central London 24 miles, Heathrow Airport 17 miles, M25 3 miles  
(All distances are approximate)



**Knight Frank Weybridge**  
20 High Street  
Weybridge  
KT13 8AB  
[knightfrank.co.uk](https://www.knightfrank.co.uk)

**Matthew Scott**  
01932 548001  
[matthew.scott@knightfrank.com](mailto:matthew.scott@knightfrank.com)

**Knight Frank Country Department**  
55 Baker Street  
London  
W1U 8AN  
[knightfrank.co.uk](https://www.knightfrank.co.uk)

**Stuart Cole**  
020 7861 5101  
[stuart.cole@knightfrank.com](mailto:stuart.cole@knightfrank.com)

## Situation

St George's Hill, Weybridge is internationally renowned as one of the most sought after private estates in the south of England. St George's Hill is set in some 900 acres and features a championship standard 18 hole golf course, a 9 hole course and a separate tennis and squash club – it is an ideal location for families looking for quality and privacy.

The tennis club is set within its own beautiful and natural environment and provides a complete range of facilities. Fifteen superb grass courts and 15 all weather hardcourts, plus 2 indoor courts and 4 squash courts make it one of the foremost racquet sports clubs in the country.

Adjoining the tennis club is a leisure complex which has a 20 m x 4 lane swimming pool, state of the art gymnasium, studio and treatment rooms, all fully supervised and offering a wide range of fitness and therapy programmes. There are also indoor crèche facilities so that families with young children are ensured peace of mind whilst playing or relaxing.

Situated on delightful stretches of both the River Wey and River Thames, the town of Weybridge has a long established reputation for being one of Surrey's most desirable locations.





With its superb shopping facilities, restaurants, boutiques and high class retail outlets resembling Kensington High Street, it has continually attracted very discerning house buyers.

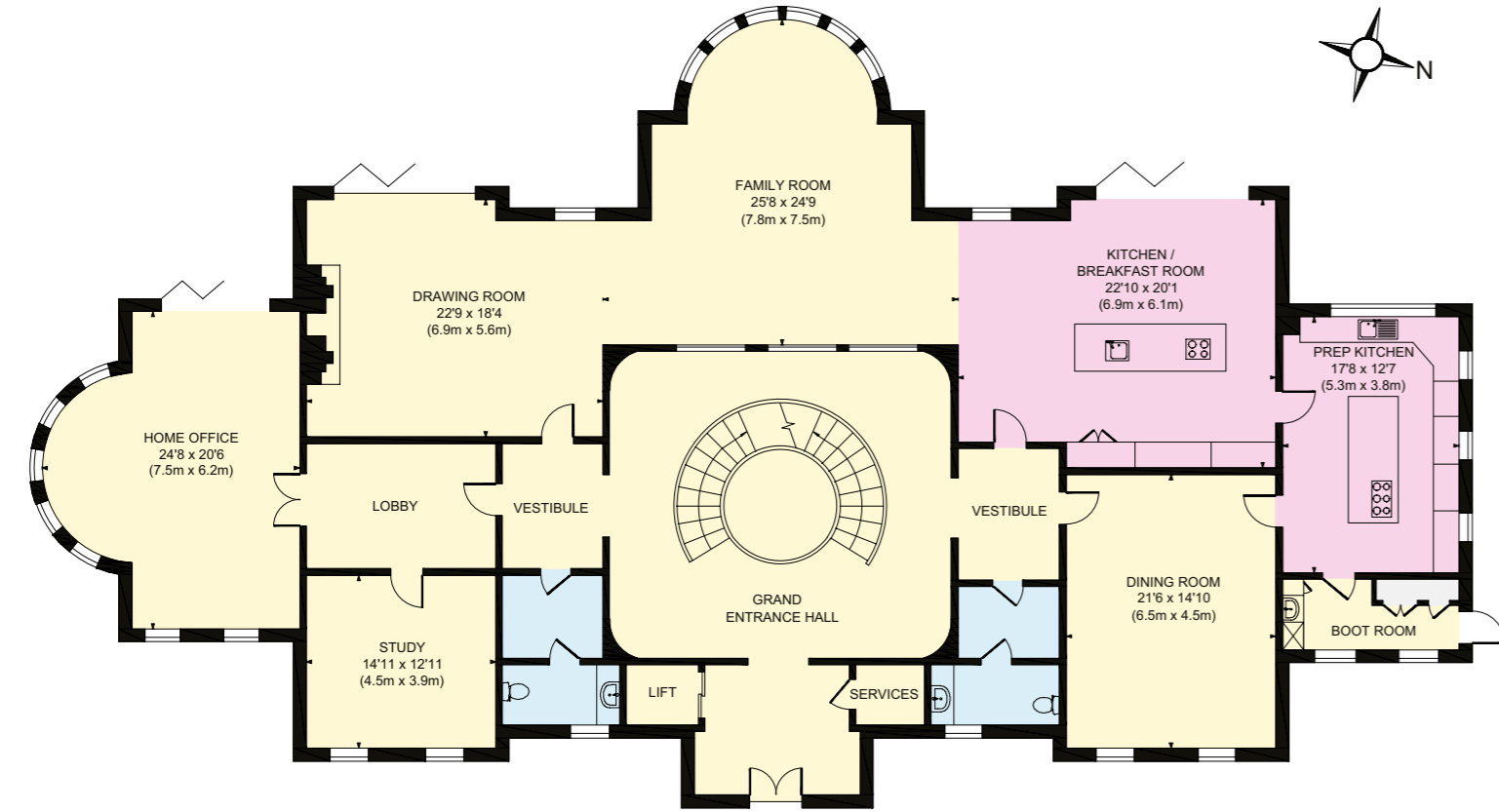
The area also possesses some exceptional schools, plus excellent communications and transport. Waterloo is reached in around 30 minutes and major motorways just a short drive from the property.



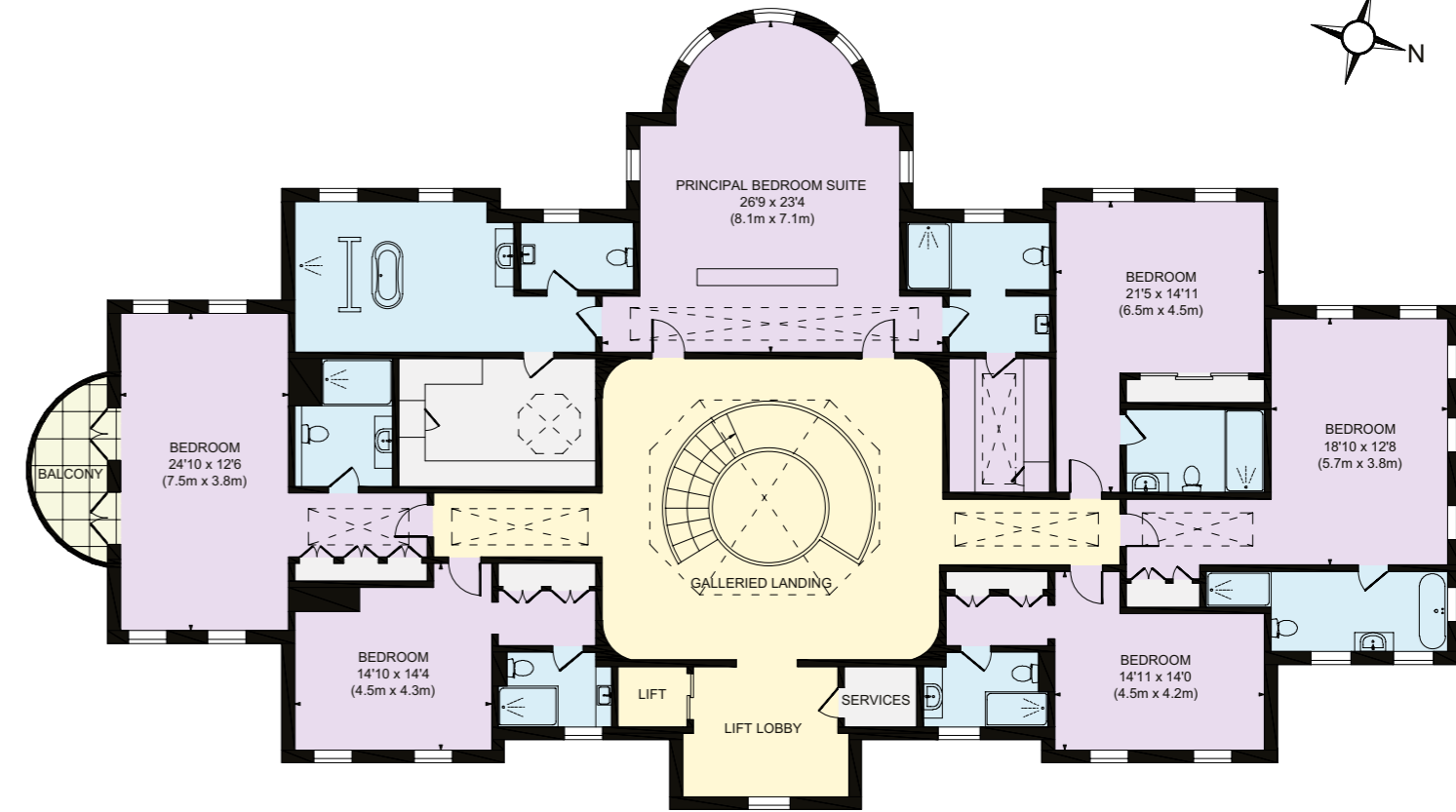


# Ground Floor

Approximate Gross Internal Floor Area  
Main House 14400 sq. ft / 1337.83 sq. m



# First Floor

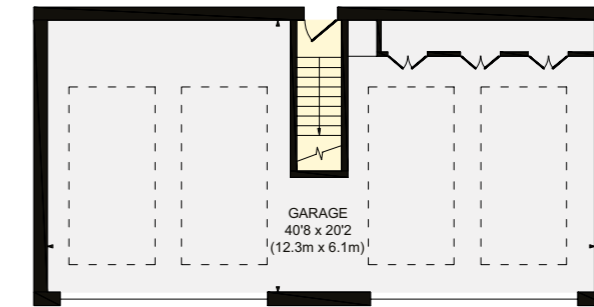
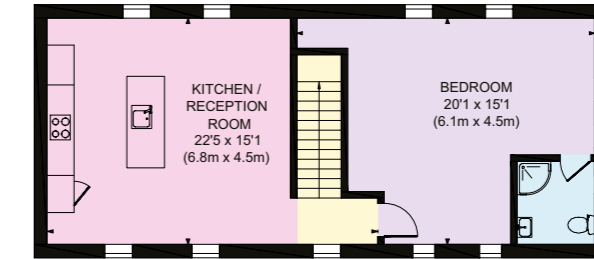


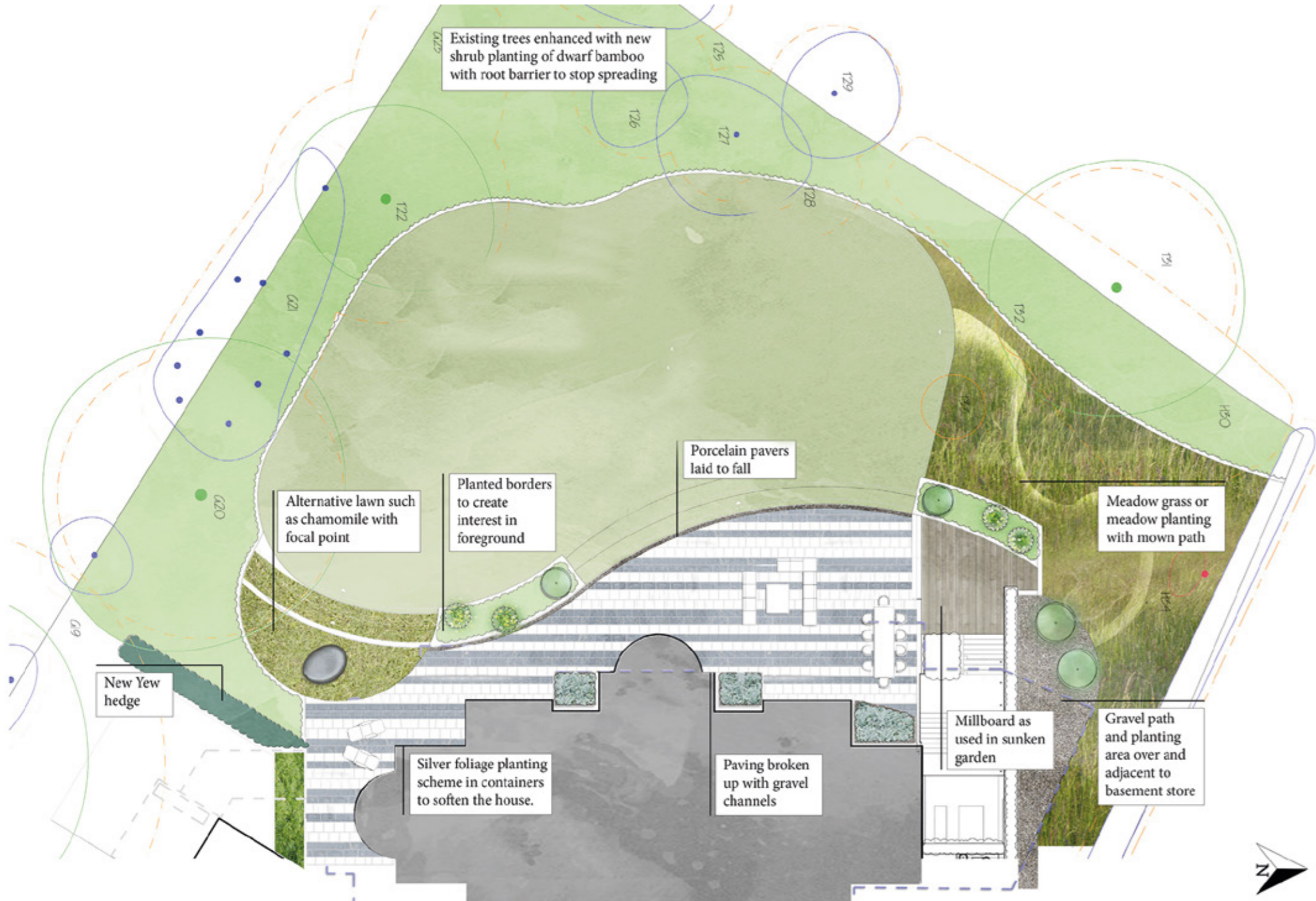
# Lower Ground Floor



# Garage & Staff Quarters (above garage)

Approximate Gross Internal Floor Area  
Garage / Staff Accommodation 1503 sq. ft / 139.67 sq. m





## Gardens and grounds

A spacious driveway and a beautifully landscaped front garden with Japanese acer, Himalayan birch trees and Buxus carefully sculptured by Brightspace. Architects and equipped with an automatic irrigation system. Rear garden with a spacious lawn and a natural looking area perfect for BBQ. Zen garden to enhance view from the swimming pool. Including a hand picked Cloud Tree.

## Schools

- St George's College
- Notre Dame School
- Reeds School
- Hampton House

## Leisure

- Local theatres
- David Lloyd Centre
- Clubs for golf, cricket, tennis, badminton, rowing and bowls

## Property information

**Tenure:** Freehold  
**Local Authority:** Elmbridge Borough Council  
**Council Tax:** Band H  
**EPC Rating:** C



Fixtures and fittings: A list of the fitted carpets, curtains, light fittings and other items fixed to the property which are included in the sale (or may be available by separate negotiation) will be provided by the Seller's Solicitors.  
 Important Notice: 1. Particulars: These particulars are not an offer or contract, nor part of one. You should not rely on statements by Knight Frank LLP in the particulars or by word of mouth or in writing ("information") as being factually accurate about the property, its condition or its value. Neither Knight Frank LLP nor any joint agent has any authority to make any representations about the property, and accordingly any information given is entirely without responsibility on the part of the agents, seller(s) or lessor(s). 2. Photos, Videos etc: The photographs, property videos and virtual viewings etc. show only certain parts of the property as they appeared at the time they were taken. Areas, measurements and distances given are approximate only. 3. Regulations etc: Any reference to alterations to, or use of, any part of the property does not mean that any necessary planning, building regulations or other consent has been obtained. A buyer or lessee must find out by inspection or in other ways that these matters have been properly dealt with and that all information is correct. 4. VAT: The VAT position relating to the property may change without notice. 5. To find out how we process Personal Data, please refer to our Group Privacy Statement and other notices at <https://www.knightfrank.com/legals/privacy-statement>.  
 Particulars dated September 2024. Photographs and videos dated 2024.  
 All information is correct at the time of going to print. Knight Frank is the trading name of Knight Frank LLP. Knight Frank LLP is a limited liability partnership registered in England and Wales with registered number OC305934. Our registered office is at 55 Baker Street, London W1U 8AN. We use the term 'partner' to refer to a member of Knight Frank LLP, or an employee or consultant. A list of members names of Knight Frank LLP may be inspected at our registered office. If you do not want us to contact you further about our services then please contact us by either calling 020 3544 0692, email to [marketing.help@knightfrank.com](mailto:marketing.help@knightfrank.com) or post to our UK Residential Marketing Manager at our registered office (above) providing your name and address. Brochure by [wordperfectprint.com](http://wordperfectprint.com)



